



DIGI REMOTE MANAGER[®]

Manage and Control Devices from a Central, Secure Platform

Meet performance obligations and security requirements with fast, efficient troubleshooting — as well as remote configuration and performance monitoring — while enjoying greater device reliability.

Digi Remote Manager provides an efficient, cost effective way to remotely monitor, update and manage Digi TransPort intelligent routers over 3G/4G LTE.

Digi Remote Manager includes:

Device Health

Lets you set the performance parameters for healthy devices and create reports and alarms to stay ahead of network problems.

Compliance and Security

Lets you maintain security compliance (e.g., PCI, HIPAA, NIST) by defining a gold standard configuration, and then scanning and fixing any out-of-compliance devices.

Firmware Updates

Allows you to schedule firmware updates to groups of devices en masse.

Optimized for Digi TransPort[®]:

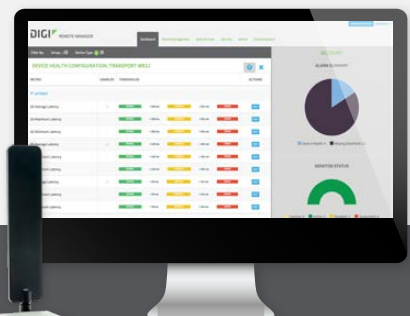
- Meet service-level commitments
- Stay compliant with payment card standards
- Keep devices up and running
- Complement your network management tools

Ideal for:

- Network operations
- System administrators
- Network engineering
- Network administrators



Singel 3 | B-2550 Kontich | Belgium | Tel. +32 (0)3 458 30 33
 info@alcom.be | www.alcom.be
 Rivium 1e straat 52 | 2909 LE Capelle aan den IJssel | The Netherlands
 Tel. +31 (0)10 288 25 00 | info@alcom.nl | www.alcom.nl



Exceed Customer Expectations

Meet Service-Level Commitments

Your customers depend on you for reliable connections. With Digi Remote Manager, you can visually monitor and report on the performance metrics that matter most, including:

- Cellular connection history
- 3G/4G LTE signal quality
- Packet delivery
- Latency
- Cellular data sent and received
- CPU and memory utilization
- Network interface throughput

Stay Compliant with Payment Card Industry (PCI) Standards

Digi has taken an industry-leading position around the adoption of PCI-DSS and other relevant security certifications in the cloud such as HIPAA and NIST, as evidenced by numerous security certifications and validated by an official PCI Report on Compliance (ROC). Digi Remote Manager finds

and fixes inappropriate or inaccurate configurations before someone can exploit them. It lets you define a device profile, assign the profile to all devices in a group, and monitor and auto-remediate any variances. Digi Remote Manager can also restrict incoming traffic to only allow SSL connections, eliminating unencrypted TCP connections.

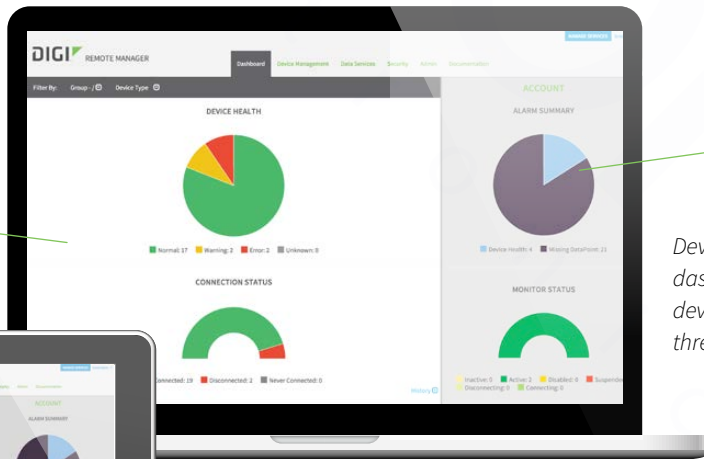
Keep Your Devices Up and Running

Many things can go wrong when you are operating a network of distributed M2M routers; Digi Remote Manager lets you diagnose and fix remote devices without sending a technician on site. That means your critical applications enjoy greater reliability and availability without expensive site visits.

Complement Your Network Management Tools

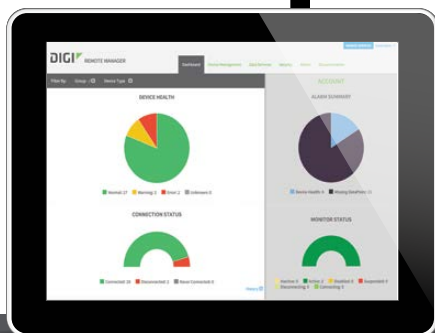
By combining hardware device support for SNMP v1/v2c/v3 and sub-edition or “module” options from the Digi Remote Manager suite, you can employ a best-of-breed solution while still using your existing network management tools.

Set performance thresholds and inspect individual devices



View the summary status of groups of devices

Device Health Manager provides a visual dashboard displaying the status of your devices in the field based on health thresholds that you define



Centralized Management, Monitoring and Configuration of Your Devices

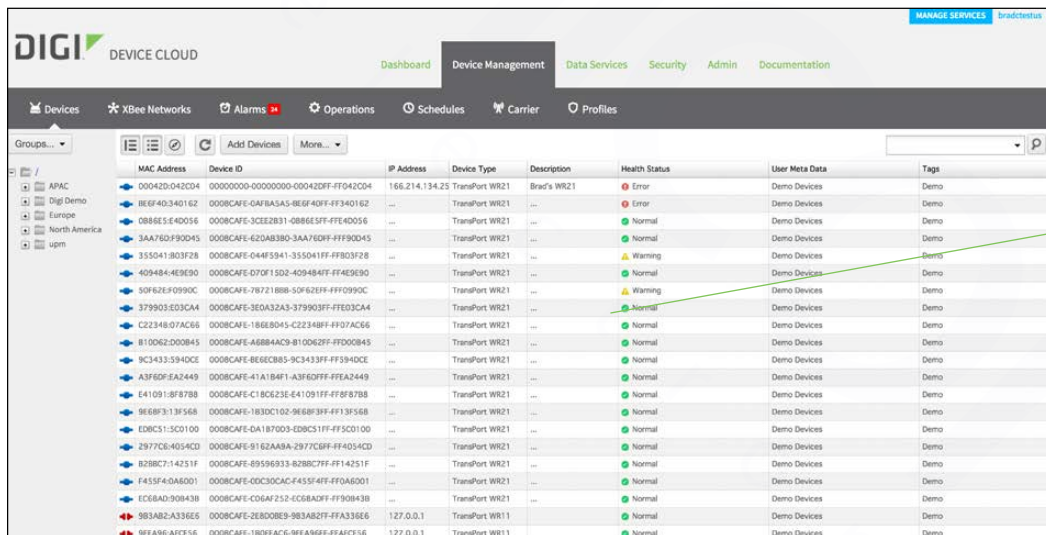
Choose the complete Digi Remote Manager suite, or just the individual sub-editions as supplements for an existing solution, to deploy a complete remote management solution for Digi TransPort routers.

Device Health

Through regular polling of your Digi TransPort devices, this central dashboard lets you stay abreast of what's going on with your devices in the field. First, define the attributes and values of a healthy device. Then, view visual displays of device-health metrics for the device, group of devices or your complete network of devices. Also schedule regular reports about the health for your device fleet and get alerts when a device state changes.

Compliance and Security

Digi Remote Manager allows you to define device profiles and establish standard configurations for firmware and file-system contents. Or, select from a set of recommended PCI-DSS validated device profiles. Choose the scanning frequency and get alerted when a compliance breach is detected. You can even script automatic predefined remediations to reapply profiles and reestablish compliance.



The screenshot shows the Digi Device Cloud interface with a table of device health status. The table has columns for MAC Address, Device ID, IP Address, Device Type, Description, Health Status, User Meta Data, and Tags. The Health Status column shows various icons: a red circle with a white exclamation mark for 'Error', a green circle with a white checkmark for 'Normal', and a yellow triangle with a white exclamation mark for 'Warning'. A green arrow points from the text on the right to the 'Warning' status of one device.

MAC Address	Device ID	IP Address	Device Type	Description	Health Status	User Meta Data	Tags
000420-042CD4	00000000-00000000-00042DF-FF042C04	166.214.134.25	TransPort WR21	Brad's WR21	Error	Demo Devices	Demo
8E6F40340162	0008CAFE-GA78A5A-8E6F40340162	---	TransPort WR21	---	Error	Demo Devices	Demo
08865E400516	0008CAFE-3CE2B31-08865E400516	---	TransPort WR21	---	Normal	Demo Devices	Demo
3AA76D-F90D45	0008CAFE-620A3B0-3AA76D-F90D45	---	TransPort WR21	---	Normal	Demo Devices	Demo
355041-803F28	0008CAFE-044F3941-355041-FF-FF803F28	---	TransPort WR21	---	Warning	Demo Devices	Demo
409484-4E8E50	0008CAFE-070F15D2-409484-FF-FF4E8E50	---	TransPort WR21	---	Normal	Demo Devices	Demo
5082E9-0990C	0008CAFE-76721888-5082E9-FF-FF0990C	---	TransPort WR21	---	Warning	Demo Devices	Demo
379903-ED3CA4	0008CAFE-3E0A32A3-379903-FF-FFED3CA4	---	TransPort WR21	---	Normal	Demo Devices	Demo
C22348-07AC66	0008CAFE-18668045-C22348-FF-FF07AC66	---	TransPort WR21	---	Normal	Demo Devices	Demo
B10062-000845	0008CAFE-A6884AC9-B10062-FF-FF000845	---	TransPort WR21	---	Normal	Demo Devices	Demo
9C3433-5940CE	0008CAFE-8E66C885-9C3433-FF-FF5940CE	---	TransPort WR21	---	Normal	Demo Devices	Demo
A3F6DF-EA2449	0008CAFE-41A1B4F1-A3F6DF-FF-FFA2449	---	TransPort WR21	---	Normal	Demo Devices	Demo
E41091-8F8788	0008CAFE-C18C623E-E41091-FF-FF8F8788	---	TransPort WR21	---	Normal	Demo Devices	Demo
9E68F31-3F568	0008CAFE-183DC102-9E68F31-FF-FF3F568	---	TransPort WR21	---	Normal	Demo Devices	Demo
ED8C51-500100	0008CAFE-DA187003-ED8C51-FF-FF500100	---	TransPort WR21	---	Normal	Demo Devices	Demo
2977C0-5004C0	0008CAFE-9162A8A9-2977C0-FF-FF5004C0	---	TransPort WR21	---	Normal	Demo Devices	Demo
B28BC71-4251F	0008CAFE-69596933-B28BC71-FF-FF4251F	---	TransPort WR21	---	Normal	Demo Devices	Demo
F455FA-0A66001	0008CAFE-0DC3CAC6-F455FA-FF-FF0A66001	---	TransPort WR21	---	Normal	Demo Devices	Demo
EC68AD-908438	0008CAFE-C06A7252-EC68AD-FF-FF908438	---	TransPort WR21	---	Normal	Demo Devices	Demo
983AB2-A336E5	0008CAFE-2E8D0B93-983AB2-FF-FFA336E5	127.0.0.1	TransPort WR11	---	Normal	Demo Devices	Demo
8EFA8E-AC7F56	0008CAFE-18DFAC6-8EFA8E-FF-FFAC7F56	127.0.0.1	TransPort WR11	---	Normal	Demo Devices	Demo

Perform mass configuration and firmware updates to remote devices


See the scanning status for all Digi TransPort devices in your network

Firmware Updates

Manage all aspects of the firmware update process with complete alerts on updates and failures for devices, groups and the overall fleet from Digi Remote Manager. Schedule automatic updates or push manual updates (upgrades or downgrades) on an ad hoc basis. Digi Remote Manager also collects a complete audit trail of all updates for reporting and compliance.

A Complete Solution

- ✓ Centralized management of remote Digi TransPort devices over 3G/4G LTE
- ✓ Automatically monitor individual devices for PCI security compliance
- ✓ Get reports and alerts on performance statistics such as connection history, signal quality, latency, data usage and packet loss
- ✓ Monitor the status and location of remote devices through a web browser
- ✓ Configure to only allow SSL connections
- ✓ Activate or deactivate cellular lines and monitor data to ensure you never incur overage charges
- ✓ Certified SSAE-16 facilities
- ✓ More than 175 security controls in place to protect your network
- ✓ Compliance with security frameworks like PCI, HIPAA, NIST and more
- ✓ Open APIs to support application development

 Digi Remote Manager Suite		Features		
		Device Health	Compliance & Security	Firmware Updates
BEST WHEN YOU NEED:	A complete device management solution with all sub-editions plus additional features	Health monitoring of individual devices and/or overall network	Automated scans to detect early signs of network tampering	Turnkey delivery of the latest firmware
BENEFITS YOU WILL REALIZE:	Increase operational efficiencies of managing a large network and decrease expenses by remote management	A clear view into the health of your network, plus current and historical performance metrics on individual devices	Automated device scans and notification to detect early signs of network tampering and mitigate risk of exposure	Decreased expenses by eliminating the need to send technicians onsite

- Foundational Product Line Values
- ✓ PCI-DSS validated with Report on Compliance (ROC)
 - ✓ No local servers or software to maintain
 - ✓ Integration with existing network management tools
 - ✓ Hosted in multiple commercial-grade facilities in NA and Europe

For more information about Digi Remote Manager, visit www.digi.com

877-912-3444 | 952-912-3444

