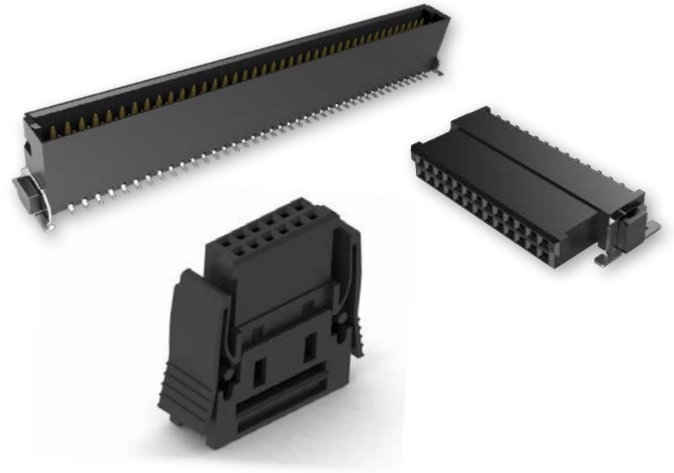


One27® Overview

Compact, Rugged, Versatile

The One27® range offers a high level of flexibility and at the same time reliable connectors for a number of board-to-board applications. The product family is based on a pitch of 1.27 mm, offers both straight and angled types as well as connections with ribbon cable, and is available in pin counts from 12 to 80 pins.

The connectors are compatible with currently available products and their performance in tests has been excellent.



SMT



Parallel



Horizontal



Perpendicular



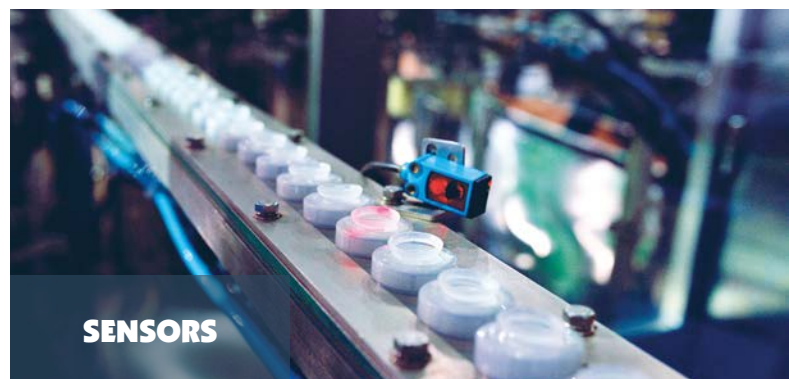
Cable



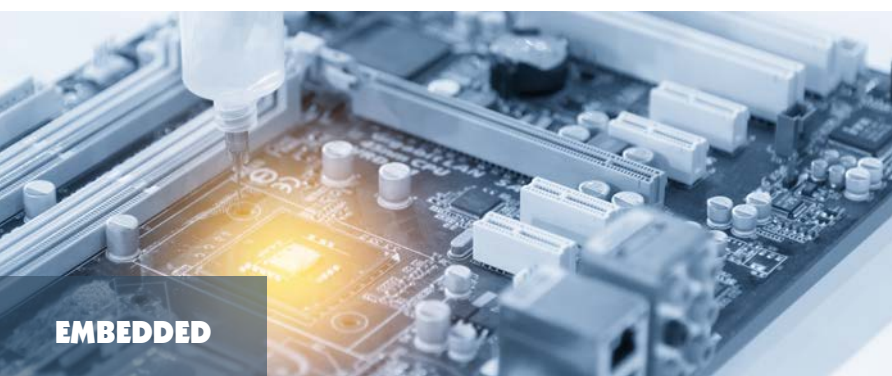
High Density



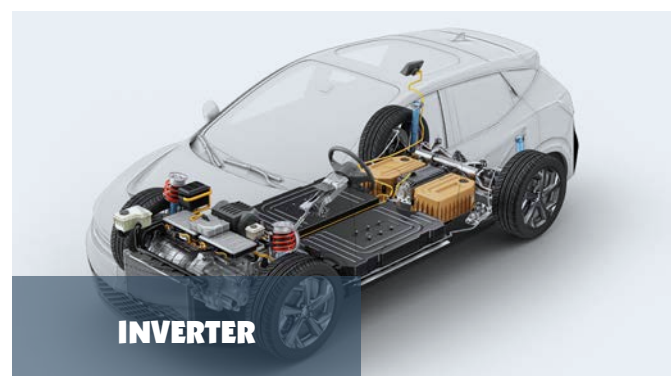
ENERGY TECHNOLOGY



SENSORS



EMBEDDED



INVERTER

Key Features:

- 1.4 A Current carrying capacity
- 500 mating cycles
- Highest contact reliability
- Tested compatibility with other suppliers
- Female IDC available individually or assembled with cable

Applications:

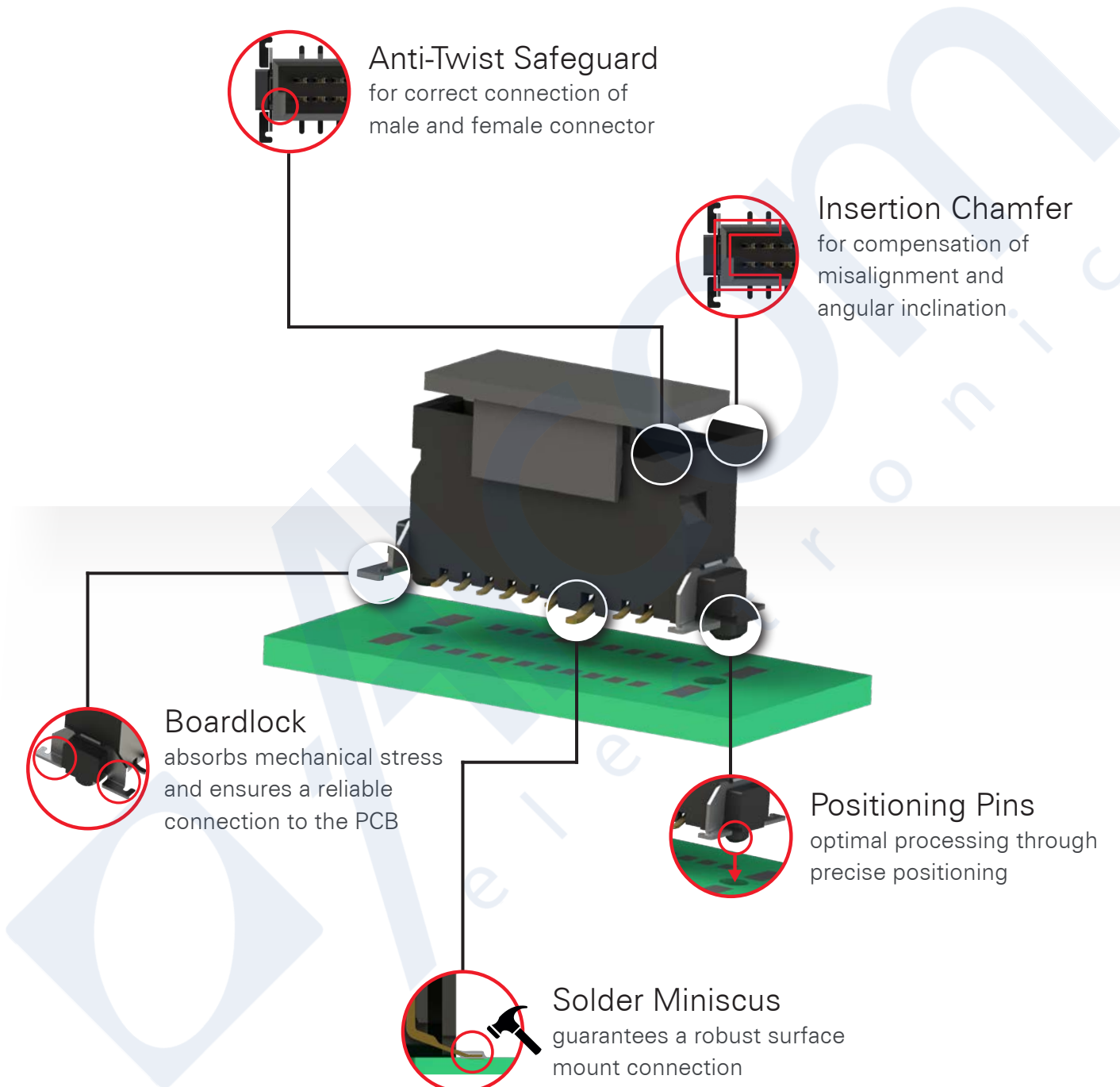
- Board-to-Board (mezzanine) from 8 mm to 20 mm
- Parallel, perpendicular and horizontal connections
- IDC connectability with ribbon cable

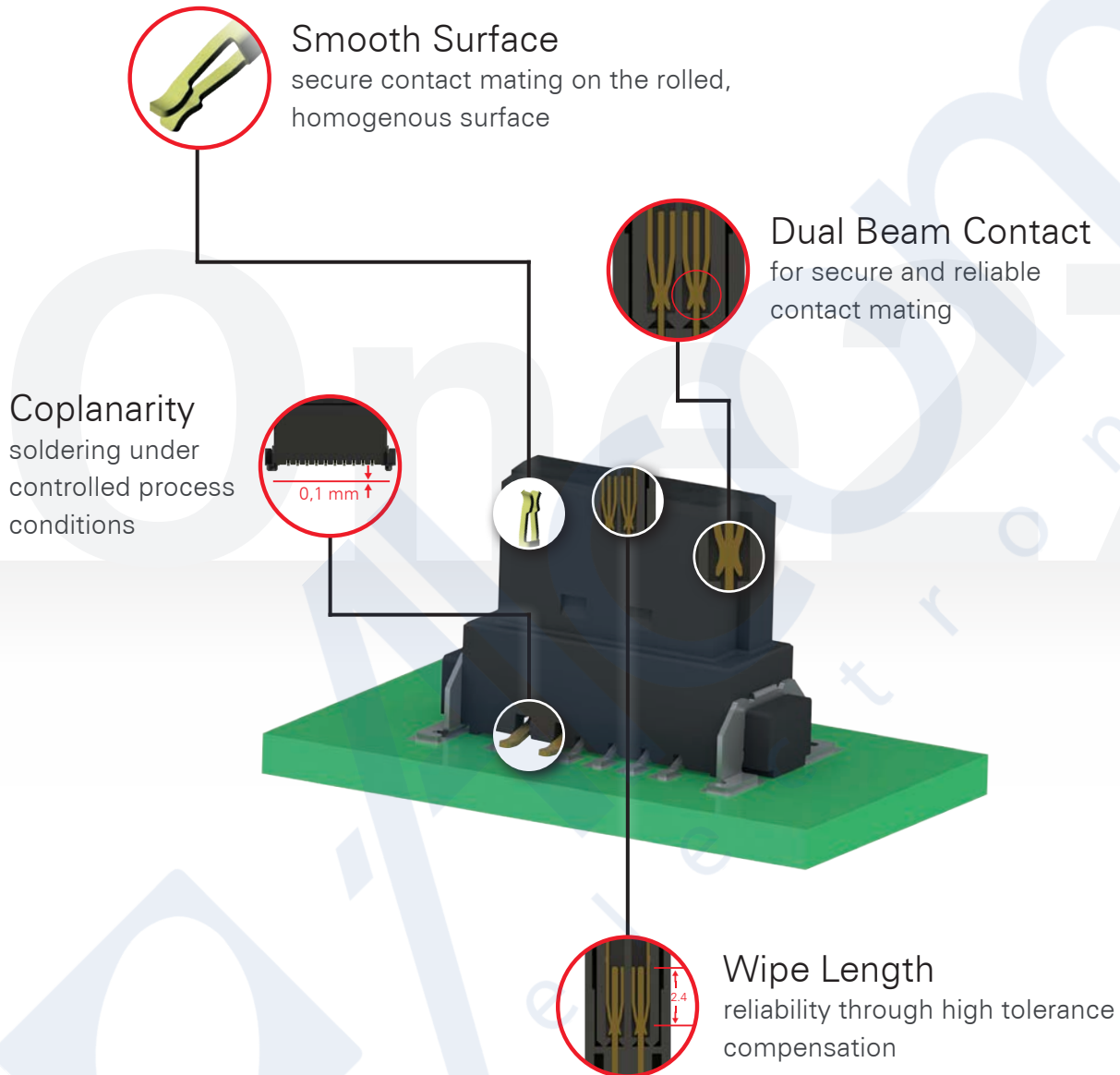
Our One27 Video:



<https://youtu.be/6doPp-7ea88>







Other features:

- Test reports available for compatibility with other connectors on the market
- Tape & reel packaging for automated assembly
- Custom variants available on request