

One27[®]

1.27 mm SMT for Board-to-Board

Key Features

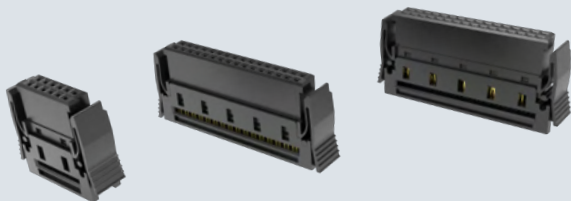
Types	see overview
Pitch	1.27 mm
Termination technology	SMT
Durability	500 mating cycles
Operational current	max. 1.4 A at 20°C (50 pins)
Approvals	UL, RoHS compliant

Applications









Board-to-board from 8 mm up to 13.8 mm
 Parallel and perpendicular connection
 IDC link with ribbon cable

Characteristics

- Versatile through different types and contact numbers
- Small through dense pitch
- Robust through high quality contact design, SMT-fixing, anti-twist protection, insertion chamfers



Overview One27

Type	Height	Number of pins	Mating configuration
	1.75 mm	12 ... 80	Parallel Perpendicular Cable
	3.25 mm	12 ... 80	Parallel Perpendicular Cable
		12 ... 80	Horizontal Perpendicular Cable
	6.25 mm	12 ... 80	Parallel Perpendicular
	9.05 mm	12 ... 80	Parallel Perpendicular
		12 ... 80	Horizontal Perpendicular
		12 ... 80	Cable
		12 ... 80	Cable