

# Digi Mobile VPN

Secure VPN service with persistent connectivity for critical communications

**Digi Mobile VPN** is a key addition to the **Digi SAFE™** solution, available as a value-added service for Digi routers through **Digi Remote Manager®**. Digi Mobile VPN enables users to create a secure connection between their data centers and the Digi router, including connected (wired or wireless) smart devices.

This service offers persistent, secure connectivity, utilizing Digi Remote Manager (Digi RM) as the central portal for orchestrating the mobile VPN setup and deployment. Digi Mobile VPN, powered by Radio IP, provides a highly secure mobile VPN software solution developed to address the exacting needs of mission critical communications with **FirstNet®** support for emergency responders.

Digi Mobile VPN enables communications to seamlessly traverse multiple, independent networks simultaneously within one mobile VPN connection, assuring secure uninterrupted connectivity for various mobile workforces — regardless of their location — while exceeding data protection regulations.

Digi devices provide a range of connectivity options including cellular failover with features such as **Digi SureLink®**, policy-based routing and interface bonding. These features are excellent at preventing any external network failures from causing downtime.

As a valuable add-on service to Digi RM, Digi Mobile VPN can be easily integrated from a central portal to enhance robust connectivity across the network. Using Digi RM to manage devices and network connectivity leverages our proven remote management platform through a single point of command. Digi RM's monitoring and management features make it easy to view and control your devices from any location.

## Digi Mobile VPN with Digi Remote Manager



Digi Mobile VPN is available as an add-on subscription to Digi Remote Manager Premier for select routers and devices including all Digi transportation (TX) cellular routers.



## Digi Mobile VPN features and benefits

- Complies with data encryption standards: FIPS 140-2, AES 256, FBI, CJIS, FirstNet Capable™
- Robust device authentication: certificate exchanges
- Group policy management and split tunneling
- Public safety standard grade — FirstNet Capable™
- Seamless roaming for reliable, secure connectivity in transit
- Greater user experience with single sign-on
- Session persistence to ensure constant application connectivity
- Faster, more reliable access to data
- Increase productivity and effectiveness
- Easy to maintain and support with less calls to IT from the field
- **Digi Remote Manager** integration for cloud-based management
- Key value-added service with the **Digi SAFE** solution
- Utilize **Digi Mobile VPN** with **Digi WAN Bonding** for secure, persistent connectivity, WAN aggregation and immediate failover

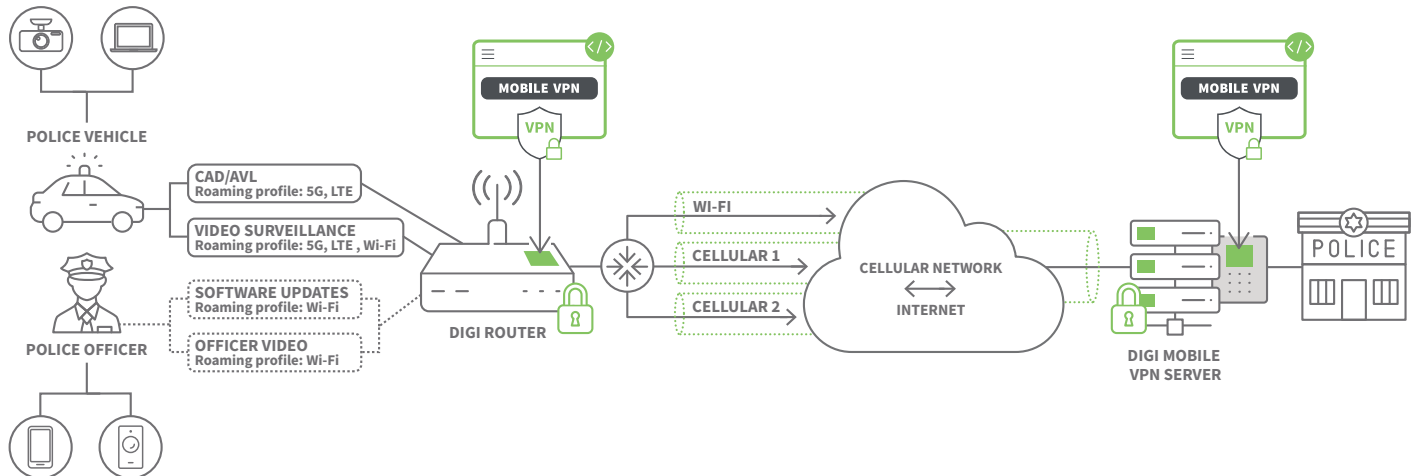




## DIGI MOBILE VPN Capabilities

### Digi Mobile VPN with Digi Remote Manager

Developed with a technology partner, Radio IP, Digi Mobile VPN provides versatility, performance and reliability to bolster public safety efforts, improve response times, and enhance overall situational awareness for first responders and agencies.



#### Enhanced privacy and security with session persistence

Privacy should ensure that no third parties — including the VPN provider — can identify individual VPN users or see their online activity by monitoring the VPN connection. This is partially accomplished by employing strong security measures. Digi routers are designed with encryption built in, and integrated Digi Mobile VPN security offers an easy-to-use solution. These technologies are used to ensure that data is kept confidential, is not modified in transit, and only travels between trusted parties.

- Secure VPN protocol such as OpenVPN, L2TP, SSTP, or IKEv2
- Channel encryption must minimally use the AES 128-bit algorithm and be tested with AES 256-bit algorithm
- Authentication protocol must be SHA256 or better
- Key exchange (RSA and DH keys) must be 2,048-bit or higher
- Perfect forward secrecy: session keys cannot be compromised even if the private key of the server is compromised
- DNS leak protection, WebRTC lead prevention and IPv6 leak prevention must be built into the VPN connection
- VPN traffic shall persist when the VPN connection drops, with persistence algorithms between the Digi router and VPN server
- The provider must operate its own DNS servers and not route DNS requests through the default ISP or a public provider such as OpenDNS or Google DNS
- Physical servers are preferred as they leave no room for ambiguity around which country's data privacy laws apply

#### Reliability with increased speed and reduced latency

A VPN's primary purpose is to ensure privacy and security online, but no one wants to compromise speed. High speed is always a top priority of first responder communications. Digi transportation cellular routers feature hardware acceleration, meet the U.S. government cybersecurity **FIPS 140-2** standard, and employ speed and latency tests for maximum performance and reliability across private and secure Internet connections.

#### Built-in capabilities with DAL OS and value-added services

With **Digi Accelerated Linux** (DAL OS) embedded in Digi devices, an extensive set of software features and capabilities are built into firmware that is signed, vetted and distributed as part of our **Digi TrustFence**<sup>®</sup>-approved standards. Digi Mobile VPN reduces cost with a single license on the router for all connected devices to the router, without needing to run a client on each connected device.

When a client enables Mobile VPN in Digi RM and configures their Digi devices remotely or locally in DAL OS, the default route for any traffic is through the Mobile VPN connection. There is no extra client necessary and the standard DAL IPsec implementation is sufficient to get started. This can be managed by the customer, by **Digi Professional Services** or by a Digi partner.

Digi Mobile VPN can also be combined with **Digi WAN Bonding** for 5G/LTE WAN aggregation and immediate failover. This further optimizes speed and throughput with reduced latency, with WAN smoothing, hot failover and packet duplication.



## DIGI MOBILE VPN

# Application Examples

### Digi Mobile VPN Application Examples and Use Cases

Digi Mobile VPN offers a secure and reliable communication solution for public safety organizations including a range of use cases where a mobile VPN can enhance law enforcement and first responder fleet operations.



#### **Emergency response coordination**

Facilitate real-time communication and data sharing with first responders, law enforcement and emergency medical services during critical incidents, enabling efficient coordination and resource allocation.



#### **Surveillance and video streaming**

Enable secure live video streaming from incident sites to command centers, enhancing situational awareness for decision-makers and enabling timely responses to unfolding events.



#### **Mobile command centers**

Establish secure mobile command centers with VPN connectivity, allowing remote access to critical data, communication channels, and resources during large-scale emergencies.



#### **Remote dispatch and dispatch-to-unit communication**

Provide seamless communication between dispatchers and field units, ensuring accurate information exchange, location tracking, and efficient task assignment.



#### **Vehicle telematics and fleet management**

Monitor and manage the locations, routes, and status of public safety vehicles in real-time, as cellular coverage changes, optimizing response times and ensuring the safety of personnel.



#### **Crisis communication and notifications**

Disseminate alerts, updates, and notifications to field personnel, ensuring they have the most up-to-date information during evolving situations.



#### **Incident reporting and data collection**

Streamline the process of documenting incidents and collecting data in the field, enhancing accuracy and accessibility of information for investigations and analysis.



#### **Remote access to databases and resources**

Enable authorized personnel to securely access databases, records, and resources from the field, ensuring they have the information they need to make informed decisions.



#### **Disaster recovery and network resilience**

Ensure communication continuity in challenging conditions during natural disasters or network failover by providing redundant, reliable connectivity options that keep critical communications operational.



## DIGI MOBILE VPN

# Management

## Digi Accelerated Linux (DAL OS) and Digi Remote Manager (Digi RM)

### DAL OS

**DAL OS** is Digi's standard operating system integrated into **Enterprise (EX)**, **Industrial (IX)** and **Transportation (TX)** routers, **console servers** and **USB-connected devices**.

Developed for speed and simplicity, DAL OS enables advanced capabilities that support today's demanding applications.

Learn more at [www.digi.com/DAL](http://www.digi.com/DAL).

### Digi Remote Manager

**Digi Remote Manager** (Digi RM) is a proven technology platform that brings networks to the next level, empowering networks — and the people who manage them — to work smarter. Digi RM transforms a multitude of dispersed IoT devices into a dynamic, intelligent network. It's easy to deploy, monitor and diagnose thousands of mission-critical devices from a single point of command on a desktop, tablet or phone. All the while, software-defined security diligently safeguards the entire Digi ecosystem.

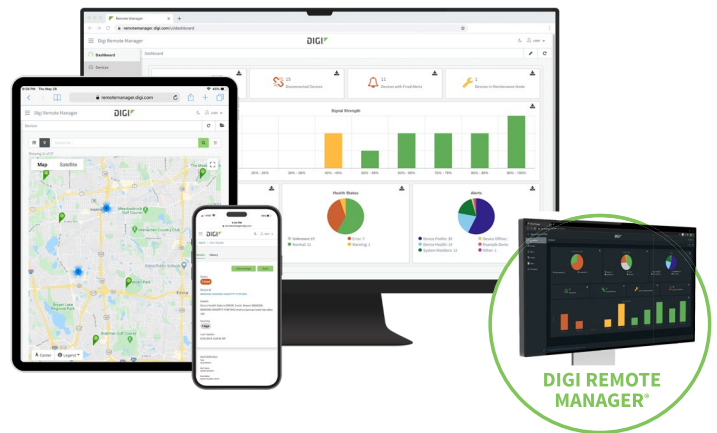
Learn more at [www.digi.com/digi-remote-manager](http://www.digi.com/digi-remote-manager).

### Digi RM Infrastructure

- Hosted in a commercial-grade cloud server environment that meets SOC 1°, SOC 2° and SOC 3° standards
- Superior availability, operating at 99.9% or greater uptime
- Open APIs are available to support application development

### Digi RM Security

- Built-in Digi TrustFence device security framework
- Member of the Center for Internet Security® (CIS®)
- Enables compliance with security frameworks like ISO27002, HIPAA, NIST and more
- Earned Skyhigh's CloudTrust™ Program highest rating of Enterprise-Ready



### DAL OS and Digi RM Capabilities

- **DAL OS with Digi Remote Manager:** Remote console access, profile Configuration Manager, HTTP proxy, device event logs, configurable maintenance window
- **I/O ports:** Pulse counter, custom Digi device Python library
- **Serial:** Modbus, serial-over-TCP/UDP
- **Customization:** Python 3, Python pip, PyCharm integration, shell scripting, containers, MQTT client
- **Troubleshooting tools:** iPerf and nuttcp bandwidth testing, Find Me tool
- **GNSS:** NMEA/TAIP location forwarding to multiple servers, geo-fencing
- Activate, monitor and diagnose your mission-critical devices from a single point of command and control
- Schedule key operations — including firmware updates and file management — on a single device or on a group of devices, keeping your network functionality up-to-date and maintaining compliance standards
- Manage edge devices out-of-band via console terminal access
- Keep tabs on device health and connectivity across device deployments of any size
- Create detailed reports and enable real-time alerts for specified conditions
- Integrate device data through open APIs to gain deeper insights and control with third-party applications
- Report and alert on performance statistics, including connection history, signal quality, latency, data usage and packet loss



## DIGI MOBILE VPN

# Security

## Digi TrustFence



### BUILT-IN SECURITY. DELIVERED.

Designed for mission-critical applications, **Digi TrustFence** enables users to easily integrate device security, device identity, and data privacy capabilities into product design. Digi TrustFence security for IoT devices is designed to grow and adapt with new and evolving threats.

Learn more at [www.digi.com/trustfence](http://www.digi.com/trustfence).

**Digi TrustFence is a device security framework that simplifies the process of securing multiple connected devices.**

- **Secure boot:** Programs and code running on the device are validated to be from an approved source or manufacturer.
- **Protected hardware ports:** Internal and external I/O ports are hardened and access-controlled to prevent unwanted intrusion.
- **Authentication:** TrustFence provides data authentication and device identity management options and ensures that products are not shipped with default user and password settings.
- **Secure connections:** These connections utilize the latest encryption protocols for data in motion and over-the-air (OTA) transmissions to ensure the integrity of network data.
- **Ongoing monitoring and support:** Digi provides ongoing threat measurement and monitoring services and performs external security audits.

## Proven global connectivity and reliability

With over 35 years of industry leadership and experience enabling millions of globally connected products, Digi is a trusted IoT solutions provider, simplifying the way customers design, build, deploy and manage connected devices and applications. Digi also offers cellular integration support, certification assistance, and custom design and build services to get products to market smarter and faster.





## DIGI MOBILE VPN

# Value-Added Service

### DIGI MOBILE VPN WITH DIGI REMOTE MANAGER

#### DIGI MOBILE VPN VALUE-ADDED SERVICE

	COMPLIANCE	AUTHENTICATION	MANAGEMENT	PUBLIC SAFETY	PRODUCTIVITY
<b>DIGI MOBILE VPN</b>	<ul style="list-style-type: none"> <li>Complies with data encryption standards</li> <li>FIPS 140-2, AES 256, FBI, CJIS, FirstNet Capable™</li> </ul>	<ul style="list-style-type: none"> <li>Robust device authentication: certificate exchanges</li> <li>Single sign-on</li> <li>Session persistence</li> </ul>	<ul style="list-style-type: none"> <li>Group policy management</li> <li>Split tunneling</li> <li>Digi Remote Manager integration</li> </ul>	<ul style="list-style-type: none"> <li>Public safety standard grade</li> <li>FirstNet Capable for emergency response</li> <li>Seamless roaming</li> </ul>	<ul style="list-style-type: none"> <li>Faster, more reliable access to data</li> <li>Simultaneously manage multiple networks</li> <li>Easy to maintain/support</li> </ul>
	<b>CUSTOM APPLICATIONS</b>		<b>BENEFITS</b>		
<b>USE CASES FOR DIGI MOBILE VPN</b>	<ul style="list-style-type: none"> <li>Persistent, secure and critical connectivity</li> <li>Public safety and emergency response</li> <li>Mass transit, buses, trains and paratransit vans</li> </ul>		<ul style="list-style-type: none"> <li>Session persistence and security to ensure constant application connectivity</li> <li>Uninterrupted connectivity for mobile workforces with fast, reliable access to data</li> <li>Improved user experience with single sign-on, seamless roaming and easy maintenance</li> </ul>		

### PART NUMBERS

### DIGI MOBILE VPN

#### VALUE-ADDED SUBSCRIPTIONS WITH DIGI REMOTE MANAGER PREMIER\*

<b>DIGI-SRV-MVPN-PR-TIER1-1YR</b>	Digi Mobile VPN subscription (Primary Responder), less than 500 routers — 1-year subscription
<b>DIGI-SRV-MVPN-TIER1-1YR</b>	Digi Mobile VPN subscription, less than 500 routers — 1-year subscription
<b>VALUE-ADDED INSTALLATION WITH DIGI REMOTE MANAGER PREMIER*</b>	
<b>DIGI-SRV-MVPN-TIER1-INSTALL</b>	Digi Mobile VPN installation, less than 500 routers (one-time fee, installation for subscriptions up to 500 routers)

\*Digi Mobile VPN is available as a subscription added to Digi Remote Manager Premier. Additional value-added services and subscription options are also available.

### PART NUMBERS

### DIGI REMOTE MANAGER

#### DIGI REMOTE MANAGER SUBSCRIPTIONS

<b>DIGI-RM-PRM-1YR</b>	Digi Remote Manager Premier — 1-year subscription
<b>DIGI-RM-PRM-3YR</b>	Digi Remote Manager Premier — 3-year subscription
<b>DIGI-RM-PRM-5YR</b>	Digi Remote Manager Premier — 5-year subscription

For more information, visit [digi.com](http://digi.com).



For more information about Digi Mobile VPN, visit [www.digi.com/mobile-vpn](http://www.digi.com/mobile-vpn).

877-912-3444 | 952-912-3444



Singel 3 | B-2550 Kontich | Belgium | Tel. +32 (0)3 458 30 33  
 info@alcom.be | [www.alcom.be](http://www.alcom.be)  
 Rivium 1e straat 52 | 2909 LE Capelle aan den IJssel | The Netherlands  
 Tel. +31 (0)10 288 25 00 | info@alcom.nl | [www.alcom.nl](http://www.alcom.nl)