



Digi Connect EZ 4 with PoE

Click-to-connect | Modern, secure serial connectivity with Power over Ethernet (PoE) that boots in seconds, configures in minutes and runs for years

Most companies are not replacing their equipment — they are updating the way they talk to it. **Digi Connect® EZ** modernizes operational infrastructure with expanded network connectivity and functionality for today's applications. It is designed to meet the demands of a wide range of critical serial applications including connecting to automation, robotics control, centralized device management, data acquisition and point-of-sale equipment.

For the machine-to-machine serial customer who demands high levels of security, data consistency, and ease of use, **Digi Connect EZ 4 with PoE** offers a state-of-the-art communication device, with software-selectable RS-232/422/485 communication, Wi-Fi and optional LTE. Its PoE capability enhances installation flexibility, allowing seamless integration into any operational environment. It takes only a few minutes to configure with intelligent, use case-based options so that you can quickly install without having to modify your equipment or applications.

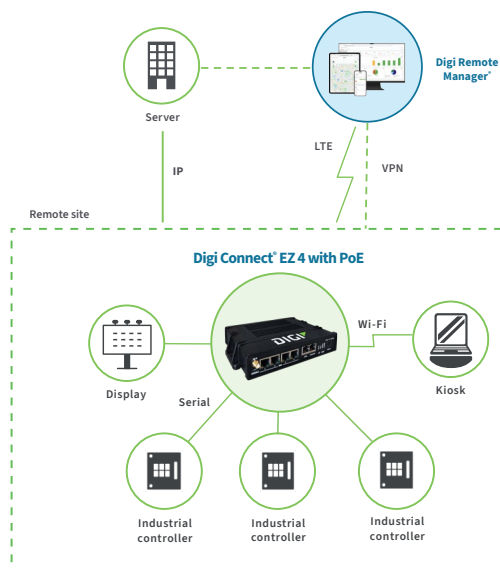
Digi simplifies key security requirements for critical infrastructure and distributed systems with enhanced access control, management and configuration capabilities. Digi Connect EZ and built-in **Digi TrustFence®** give your security and operations teams peace of mind against evolving threats with encrypted connections, centralized authentication, VPN support and scalable security updates.

Digi Connect EZ supports the widest range of industry standard and device-specific protocols using serial tunneling, TCP/UDP connections or Digi's patented RealPort® COM port redirector for remote native COM port access. A built-in Python environment enables application development and customization at the device level, including event-based programmability, data conversion and full control of device connections.

Key features, benefits and applications

- **Enhanced connectivity:** four MEI 232/422/485 serial ports enable robust M2M data communication across multiple devices efficiently
- **PoE:** can be powered through an Ethernet cable from a compliant switch or power injector, allowing for flexible placement near connected equipment without the need for additional power sources
- **Digi Accelerated Linux (DAL):** ensures a consistent, secure and easy-to-deploy solution that facilitates longevity and manageability across various applications
- **Wi-Fi support:** capable of functioning as both a client and server, enhancing versatility in network configurations
- Dual power options via 802.3af PoE or standard Digi power adapter provide installation flexibility and reduce equipment clutter
- Optional cellular module for continuous remote connectivity
- Designed for performance in varied environments and temperatures
- Easy setup and mass configuration with **Digi Navigator™** and **Digi Remote Manager®**
- 1-year **LifeCycle Assurance** with 24x7 Expert Support and Digi Remote Manager Premier included

Application example



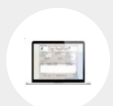
Related Digi devices and software



Digi Connect® EZ
Mini/2/4



Digi Connect® EZ
16/32



RealPort®

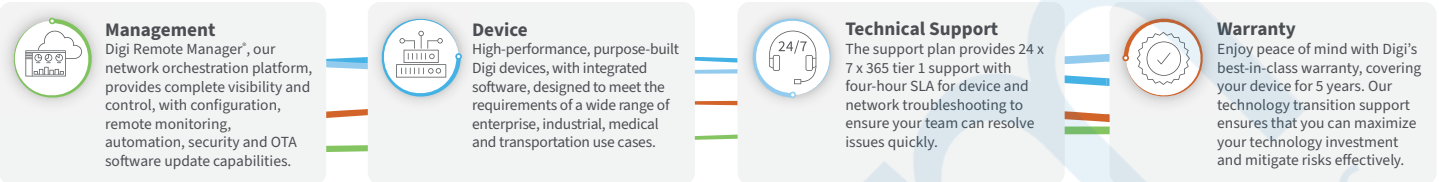


Digi Remote
Manager®

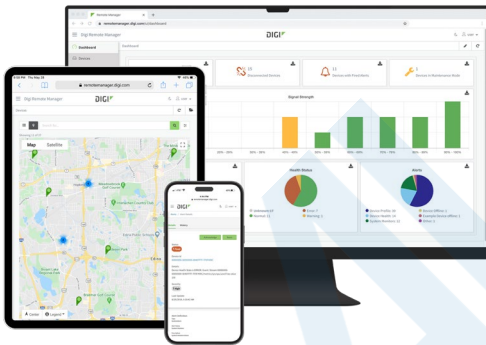
Digi LifeCycle Assurance



Digi LifeCycle Assurance provides an enhanced level of service and support on new deployments of Digi AnywhereUSB® Plus, Digi Connect® EZ, and Digi Connect® IT 16/48 to provide security, reliability and speed, as well as ongoing device management.



Digi Remote Manager



Digi Remote Manager (Digi RM) is a proven technology platform that brings networks to the next level, allowing networks — and the people who manage them — to work smarter. Digi RM transforms a multitude of dispersed IoT devices into a dynamic, intelligent network. It's easy to deploy, monitor and diagnose thousands of mission-critical devices from a single point of command on a desktop, tablet or phone. All the while, software-defined security diligently safeguards your entire Digi ecosystem.

[Learn more at digi.com/digi-remote-manager.](https://www.digi.com/digi-remote-manager)

Digi RM Capabilities

- Activate, monitor and diagnose your mission-critical devices through a single portal
- Schedule key operations — including firmware updates and file management — on a single device or on a group of devices, keeping your network functionality up-to-date and maintaining compliance standards
- Manage edge devices out-of-band via console terminal access
- Monitor equipment health and connectivity across deployments of any size
- Create detailed reports and enable real-time alerts for specified conditions
- Integrate device data through open APIs to gain deeper insights and control with third-party applications
- Report and alert on performance statistics, including connection history, signal quality, latency, data usage and packet loss

Digi RM Infrastructure and security

- Hosted in a commercial-grade cloud server environment that meets SOC 1®, SOC 2® and SOC 3® standards
- Superior availability, operating at 99.9% or greater uptime
- Open APIs available to support application development
- Comprehensive security controls in place to protect your data
- Member of the Center for Internet Security® (CIS®)
- Enables compliance with security frameworks like ISO27002, HIPAA, NIST and more
- Earned Skyhigh's CloudTrust™ Program highest rating of Enterprise-Ready

Digi Containers — Value-Added Service



Digi Remote Manager enables deployment of custom applications via containers

Digi Containers simplify and centralize the process of building, deploying and running custom applications on devices managed with **Digi Remote Manager** as the central portal. Containers with custom programs or Python applications can be loaded via Digi RM on any device running the **Digi Accelerated Linux** operating system (DAL OS).

As an add-on service to Digi Remote Manager, Digi Containers are a powerful capability implemented via Lightweight Linux Containers (LXC). LXC tools enable developers to package up a custom application, with its dependencies and configuration, into a lightweight, portable bundle that shares only the running kernel with the host device.

*Digi Containers are available as a value-added service with Digi Remote Manager.

Digi Navigator



Digi Navigator gives users the ability to discover and configure Digi Connect EZ in minutes. The tool is what makes Digi Connect EZ easy. It allows you to spend your time where it matters most by taking away the hassle of finding devices on a network, configuring the IP address, defining serial ports and connected devices, setting up Digi RealPort and managing passwords.

Digi Navigator Features

- Find and connect to devices on a LAN
- Guide IP address configuration
- Configure Digi Connect EZ for use with Digi RealPort
- Quickly define serial ports and devices associated with ports
- Access the Digi Connect EZ web and command line interface
- Manage passwords easily

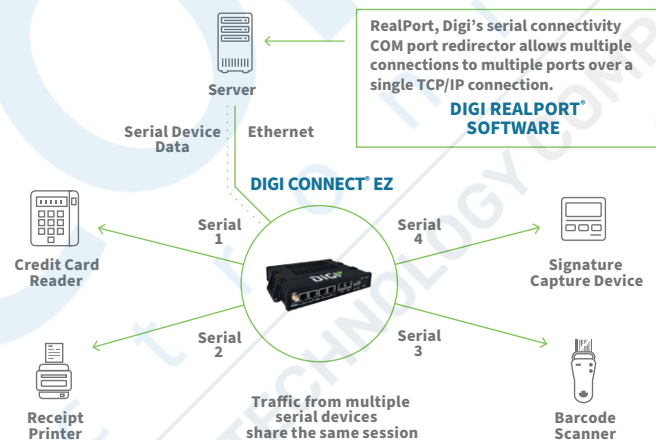
Digi RealPort

Digi's patented RealPort software provides serial connectivity over IP networks, no matter where the devices reside.

Digi RealPort is unique among COM port redirectors. It is the only implementation that allows multiple connections to multiple ports over a single TCP/IP connection instead of a separate TCP/IP connection for each serial port. This helps manage network traffic and reduce congestion.

Digi RealPort is installed on the application host; whether it be local, remote, physical, virtual or in the cloud. This allows applications to communicate with devices across a network as if the devices were directly attached to the computer, allowing device connectivity from anywhere on your network.

RealPort also provides end-to-end encryption and full hardware flow control, as well as optimizations for packetization, latency and throughput.



Digi TrustFence

Digi TrustFence is a device security framework that simplifies the process of securing connected devices.



Built-In Security. Delivered.

Designed for mission-critical applications, Digi TrustFence enables users to easily integrate device security, device identity, and data privacy capabilities into product design. Digi TrustFence security for IoT devices is designed to grow and adapt with new and evolving threats.

Learn more at digi.com/trustfence.

Digi TrustFence Features

Secure Boot

- Programs and code running on the device are validated to be from an approved source or manufacturer.

Protected Hardware Ports

- Internal and external I/O ports are hardened and access-controlled to prevent unwanted local intrusion.

Authentication

- Provides data authentication and device identity management options and ensures that products are not shipped with default user and password settings.

Secure Connections

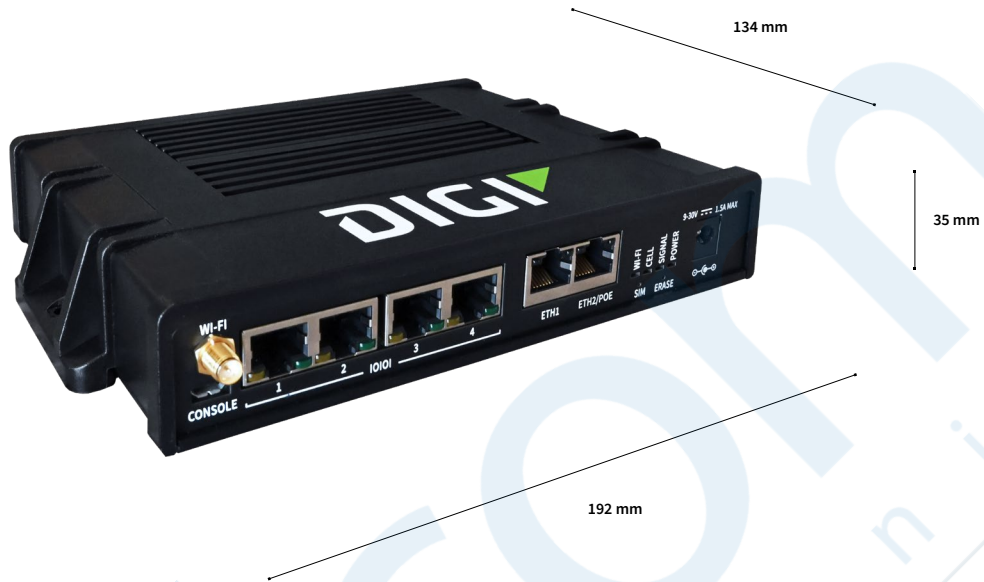
- These connections utilize the latest encryption protocols for data in motion and over-the-air (OTA) transmissions to ensure the integrity of data flowing across a network.

Ongoing Monitoring and Support

- Provides ongoing threat measurement and monitoring services and performs external security audits.

Product Images

Digi Connect EZ 4 with PoE



Digi Connect EZ 4 with PoE— front



Digi Connect EZ 4 with PoE— back



Specifications		Digi Connect EZ	Digi Connect EZ 4 with PoE
SOFTWARE AND MANAGEMENT			
REMOTE MANAGEMENT	Digi Remote Manager, SNMP v3 (user installed/managed)		✓
LOCAL MANAGEMENT	Digi Navigator discovery and configuration tool, Web UI (HTTP/HTTPS), CLI (Telnet, SSH)		✓
MANAGEMENT / TROUBLESHOOTING TOOLS	Digi Navigator discovery and configuration tool, FTP client, SCP, protocol analyzer with PCAP for Wireshark, event logging with syslog and SMTP client, NTP/SNTP, Nagios, Intelliflow, iPerf, Dynamic DNS, ping, traceroute		✓
MEMORY			256 MB RAM, 4 GB Flash
SECURITY			
AUTHENTICATION	TACACS+, LDAP, Enterprise RADIUS		✓
ETHERNET			
PORTS	RJ-45, 10/100/1000 Mbps (auto-sensing)		2-port
SERIAL SIGNAL CAPABILITIES			
PORTS	RS-232 DTE/RS-422/RS-485 capable, software selectable		(4) RJ45-10
RS-232 / EIA-232 SERIAL MODES	Signal support TXD, RXD, RTS, CTS, DTR, DSR, DCD, RI flow control options: XON/OFF, CTS/RTS, RTS-toggle		✓
RS-422 / EIA 422 SERIAL MODES	TX+/-, RX+/-, software termination, pre-delay/post-delay		✓
RS-485 / EIA 485 SERIAL MODES	Data+/Data-, software termination, pre-delay/post-delay		✓
CELLULAR			
CERTIFICATIONS	Visit digi.com/resources/certifications for latest certifications		
LTE (G4) WITH DIGI CORE® PLUG-IN LTE MODEM 1002-CMG4	LTE Cat 4: B1, B2, B3, B4, B5, B7, B8, B12, B13, B18, B19, B20, B25, B26, B38, B40, B41; 3G: B1, B2, B4, B5, B6, B8, B19 2G EDGE / GPRS: 850 / 900 / 1800 / 1900 MHz		When used with Digi CORE plug-in LTE modem
CONNECTORS	(2) 50 Ω SMA (center pin: female)		
SIM SLOTS	(2) Mini-SIM (2FF)		
SIM SECURITY	Secured in cellular module		
WI-FI			
MODULE	1 x 1 SISO dual-band 802.11a/b/g/n/ac (2.4 GHz / 5 GHz)		✓
MODES	Client mode and access point mode simultaneously		✓
CLIENTS	Maximum 10 clients (access point mode: regardless of combination of clients and access points)		✓
ACCESS POINTS	Maximum 2 access points (access point mode: regardless of combination of clients and access points)		✓
SECURITY	WPA-3/WPA-2 personal, WPA/WPA-2 enterprise		✓
CONNECTORS	(1) 50 Ω SMA (center pin: male)		✓
PHYSICAL			
DIMENSIONS (L x W x H)			19.2 x 13.4 x 3.5 cm (7.56 x 5.28 x 1.38 in)
PACKAGE DIMENSIONS			35.5 x 20.4 x 6.7 cm (13.98 x 8.03 x 2.64 in)
PACKAGE WEIGHT			1.3 kg (2.87 lb)
STATUS LEDs	Each Ethernet and serial port has two status LEDs		Power, signal, LTE, Wi-Fi, Ethernet, serial

Specifications		Digi Connect EZ	Digi Connect EZ 4 with PoE
POWER REQUIREMENTS			
POWER INPUT	Locking barrel: 9 to 30 VDC, locking 2.1 mm center barrel connector		✓
POWER OVER ETHERNET	Power over Ethernet 802.3af power, 802.3af Class 1, 48 V at .04 A (typical)		✓
POWER CONSUMPTION		9 V at 1.5 A max, 5 W typical with Digi CORE modem, 4.5 W typical without Digi CORE modem	
ENVIRONMENTAL			
OPERATING TEMPERATURE	Standard operating temperature of Connect EZ device		0 to 40 °C (32 to 104 °F)
	With Digi CORE plug-in LTE modem		0 to 40 °C (32 to 104 °F)
RELATIVE HUMIDITY	5% to 95% (non-condensing)		✓
APPROVALS*			
CELLULAR	Visit digi.com/resources/certifications for latest cellular certifications		
SAFETY	IEC62368-1, IEC60950-1, CB, EN62311, UL62368-1, UL60950-1		✓
ENVIRONMENTAL	RoHS3		✓
EMISSIONS / IMMUNITY	CE; RED; FCC Part 15, Subpart B; ICES-003; AU/NZS CISPR32		✓
WARRANTY			
PRODUCT WARRANTY	5-year for base Connect EZ device, 3-year for Digi CORE plug-in LTE modem		
TECHNICAL SUPPORT	1-year LifeCycle Assurance with 24x7 Expert Support included.		

*Visit digi.com/resources/certifications for latest certifications and updates.

Enterprise Software	Description
NETWORK PROTOCOL SUPPORT	HTTPS, FTP client, SSL, TLS v1.2, SCP (client and server), SFTP, SMTP client for use by scripts and the command line, SNMP (v2/v3), SSH, remote management via Digi Remote Manager ; Protocol analyzer, ability to capture PCAP for use with Wireshark; DynDNS, Dynamic DNS client compatible with BIND9/No-IP/DynDNS; Captive portal, Intelliflow; Nagios, DNS server, NTP server, Multicast, mDNS, IPPerf
SERIAL AND DATA PROTOCOL SUPPORT	RealPort, socket and autoconnect socket connectivity for TCP and encrypted TCP, SSH, Telnet, RFC-2217, UDP, Modbus, Pyserial support via built-in Python interpreter
SECURITY	IP filtering, stateful firewall, custom firewall rules (iptables), address and port translation; TLS 1.2 and above, FIPS 197, open VPN client and server; VPN tunnels; Authentication: RADIUS, TACACS+; certificates; MAC address filtering; VLAN support
VPN	IPsec with IKEv1, IKEv2, NAT Traversal; OpenVPN client and server; GRE VPN tunnels; Cryptology: SHA-1/256/384/512, MD5, RSA; Encryption: 3DES and AES up to 256-bit (CBC mode for IPsec); Diffie Hellman: DH groups 1-32 (CURVE448)
ROUTING/FAILOVER	IP pass-through; NAT, NAPT with IP port forwarding; Ethernet bridging; GRE; Multicast routing; Routing protocols: RIP (v1, v2) OSPF, BGP, IP failover: VRRP; automatic failover; Digi SureLink *
OTHER PROTOCOLS	DHCP; dynamic DNS client compatible with No-IP/DynDNS

Part Numbers**Digi Connect EZ 4 with PoE**

EZ04-P000

Digi Connect EZ 4 with PoE — serial server, 4-port, with Wi-Fi, no accessories

Part Numbers**Accessories**

1002-CMG4-GLB

Digi CORE plug-in LTE modem — global LTE Cat 4, 3G/2G fallback

76000926

Antenna — 3G/4G, multiband 699-2690 MHz, swivel

76002118

Antenna — dipole, 4G, magnetic mount, 1 meter cable

29000938

Antenna — whip 2.4 and 5 GHz dipole 5 dBi

24000136

Power Supply — 12 VDC 3 A wall plug, locking barrel, with tips for US, UK, EU and AU (EZ 2 and EZ 4)

76002093

DIN rail mounting bracket

76002095

DIN rail clip, 44 mm wide, with screws

Part Numbers**Serial Cables and Adapters****CABLE ADAPTERS**

76000697

DB-9F console adapter, quantity 4

76000698

DB-25M console adapter, quantity 4

76000699

DB-25F console adapter, quantity 4

76000700

DB-25M modem adapter, quantity 4

76000701

DB-9M modem adapter, quantity 4

CABLES

76000195

RJ-45 to DB-25 male straight, 4 feet

76000199

RJ-45 to DB-25 female straight, 4 feet

76000201

RJ-45 to DB-9 female straight, 4 feet

76000238

RJ-45 to DB-25 male crossover, 4 feet

76000240

RJ-45 to DB-9 male straight, 4 feet

76000264

RJ-45 to DB-9 male crossover, 4 feet

76000631

RJ-45 to RJ-45 for Sun Netra/Cisco, 6 feet

76000645

RJ-45 to DB-9 female crossover, 4 feet

SPECIALTY CABLES

76000723

Connects screw terminal EIA 422/485 devices to Digi MEI products that have 10-pin RJ-45 connectors

Digi Connect EZ 4 with PoE — included accessories

		Digi Connect EZ 4 with PoE
Part number		EZ04-P000
LTE modem	1002-CMG4-GLB	
Antenna - 3G / 4G	76000926	
Antenna - dipole, 4G	76002118	
Antenna - 2.4 and 5 GHz	29000938	Included
Power supply - 12 V, 3 A	24000136	Included
DIN rail bracket	76002093	
DIN rail clip	76002095	

Part Numbers

Digi LifeCycle Assurance

DIGI-IM-LCA-1YR-EXT	Digi LifeCycle Assurance — 1-year extension
DIGI-IM-LCA-2YR-EXT	Digi LifeCycle Assurance — 2-year extension
DIGI-IM-LCA-3YR-EXT	Digi LifeCycle Assurance — 3-year extension
DIGI-IM-LCA-4YR-EXT	Digi LifeCycle Assurance — 4-year extension
DIGI-IM-LCA-RENEWAL	Digi LifeCycle Assurance renewal



LifeCycle Assurance

1-year **LifeCycle Assurance** with 24x7 Expert Support and Digi Remote Manager Premier included with Digi Connect EZ models.

