

# Check out the latest solutions from Central

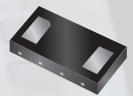
## 50V Adjustable Current Limiting Diode: CMJA5050

Single device eliminates the need for additional current regulation

- Placing resistors in parallel allows regulator current to be adjusted from 50mA to 80mA
- One device eliminates the need for several individual CLDs to meet required regulation values
- Low profile DFN123F package (1.0mm) makes CMJA5050 ideal for small applications



Top View



Bottom View

## JFETs for various applications, including Pro Audio

Central is committed to maintaining these hard-to-find devices

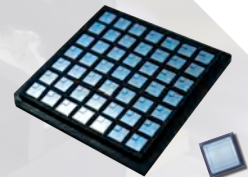
- Designed for applications requiring a controlled current, but not a biasing current
- Exceptionally beneficial for high quality analog signal transmitting applications
- In stock now for immediate delivery, minimal leadtimes if not in stock

POPULAR JFETS: 2N4416, 2N4416A, 2N4391, 2N4392, 2N4393, 2N3819, CMPFJ175, CMPFJ176

## Silicon Carbide Schottky Rectifier die: CPC04-CPC15

Optimized for exceptionally high temperature applications

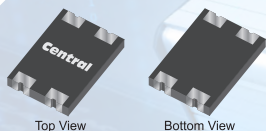
- Bare die allows for theoretical operation at junction temperatures greater than 600°C
- Low total conduction losses and minimal changes to switching characteristics as a function of temperature
- High voltage capability (650V, 1200V) and wide current range (2A, 4A, 5A, 6A, 8A, 10A, 30A, 50A)



## Extremely low profile Schottky Bridge Rectifiers

CBRDFSH series features 1.22mm BR DFN surface mount case

- Multiple voltage and current options to satisfy design challenges (40V, 60V, 100V | 1A & 2A)
- BR DFN case has a **54% lower profile** than Central's HD DIP case
- Ideal for the latest applications requiring highly efficient, space-saving Schottky bridge rectifiers



Top View

Bottom View



Singel 3 | B-2550 Kontich | Belgium | Tel. +32 (0)3 458 30 33 | info@alcom.be | www.alcom.be  
Rivium 1e straat 52 | 2909 LE Capelle aan den IJssel | The Netherlands | Tel. +31 (0)10 288 25 00 | info@alcom.nl | www.alcom.nl



diodes & rectifiers

bipolar transistors

MOSFETs & JFETs

protection devices

multi discrete modules (MDMs™)

thyristors

**Central Semiconductor Corp.**

145 Adams Ave • Hauppauge, NY • 11788 • USA  
001.631.435.1110 • www.centralsemi.com

require a custom solution?

Just Ask