

ELIT-1930

Fanless Signage Player with 8th & 9th Gen. Intel® Core™ i9/i7/i5/i3 Processor (Coffee Lake Refresh / Coffee Lake)



Features

- Support triple-display for 1 x HDMI, 1 x DVI-D and 1 x DP
- Support one channel 4K (UHD) Display
- Support 3 x COM, 4 x USB3.1 with Type A, 1 x Nano SIM
- Support DirectX 12
- Support iAMT Function
- Support RAID Function
- One NGFF connector for wireless
- RTC wakeup supported
- Operating temperature : -15 ~ 60°C
- Support Intel® Solid State Drive (SSD) Embedded "E SKU's

System

CPU	8 th & 9 th Gen. Intel® Core™ i9/i7/i5/i3 Processor in LGA1151 Socket (Max.35W TDP)
Memory	2 x 260-pin DDR4 SO-DIMM sockets, supporting 2400/2666MHz SDRAM up to 32GB
Chipset	Intel Q370
Graphics	Intel® UHD Graphics 630
LAN Chipset	1 x Intel® i219LM (LAN1)/(iAMT for i5/i7) 1 x Intel® i210IT (LAN2)
Watchdog Timer	1~255 levels reset

I/O

PS/2	1 x keyboard and mouse connector
Serial Port	3 x RS-232/485 port w/1 x DB-9 / 2x RJ-45
USB Port	4 x USB 3.1 with Type A connectors
LAN	2 x RJ-45 ports for GbE
Video Port	1 x DP 1.2, up to 3840x2160@60Hz
	1 x HDMI, up to 3840x2160@60Hz
	1 x DVI-D, up to 1920x1080@60Hz
	Support one channel 4K(UHD) display output

Expansion Bus / Storage	1 x M.2 M-Key 2280 socket (standard M-key) BIOS default: SATA+PCIe x4 (for storage)
	1 x M.2 E-Key 2230 socket (standard E-key) BIOS default: PCIe x1+USB 2.0 (for WiFi /BT)
	1 x M.2 B-Key 2242 socket (standard B-key except HSIC) BIOS default: PCIe x1+ USB3.0 BIOS option: SATA + USB3.0 (for RAID)
	1 x Nano SIM Socket

Environmental

Operating Temp.	-15 ~ 60°C (5 ~ 140°F), ambient w/ air flow
Storage Temp.	-20 ~ 70°C (-4 ~ 158°F)
Operating Humidity	10 ~ 95% @ 50°C (non-condensing)
Vibration	3 Grms/5~500Hz/random operation
Shock	Operating 40G (11ms), non-operating 80G with M.2 PCIe SSD

Qualification

Certification	CE, FCC Class A
---------------	-----------------

Power Requirement

Power Input	DC 12~24V input
Power Consumption	Max. 60W (w/o I/O card)
Power Management	RTC wakeup timer configurable

Mechanical

Construction	Aluminum alloy
Mounting	Wall-mount
Weight	3 kg
Dimensions (W x H x D)	210 x 190 x 70 mm (7.60" x 1.96" x 6.69")

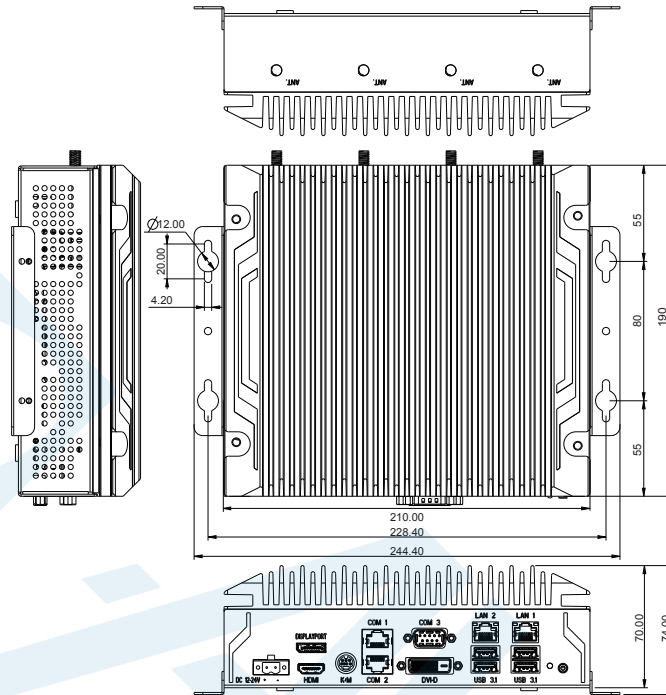
OS Support

Windows 10 IoT/Linux (Kernel: 4.X)

Ordering Information

ELIT-1930	Digital Signage Player with Intel® Q370 w/o CPU, memory and storage (CPU-RAM-SSD-OS by CTOS)
-----------	--

Dimensions



Unit: mm

Standard Accessories

Bracket ELIT-1930 bracket



Optional Accessories

PAC-120W6B-FSP-ES 120W AC/DC 19V adapter kit with 2-pin/3-pin/4-pin block



Optional Configuration (CTOS* Kit)

Core™ i7-8700T Intel® 8th Gen. Core™ i7-8700T processor, L2/12M, 2.4G

Core™ i7-9700TE Intel® 9th Gen. Core™ i7-9700TE processor, L2/12M, 1.8G

Core™ i5-8500T Intel® 8th Gen. Core™ i5-8500T processor, L2/9M, 2.1G

Core™ i5-9500TE Intel® 9th Gen. Core™ i5-9500TE processor, L2/9M, 2.2G

Core™ i3-8100T Intel® 8th Gen. Core™ i3-8100T processor, L2/6M, 3.1G

Core™ i3-9100TE Intel® 9th Gen. Core™ i3-9100TE processor, L2/6M, 2.2G

64 GB SSD M.2 SSD, INNODISK, DEM24-64GM41BC1DC-24

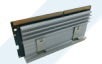
MK-4C-4G/8G/16G 260-pin DDR4-2133 4GB/8GB/16GB SO-DIMM

WiFi-AT3550 Atheros QCNFA364A M.2 WiFi module w/ 2*30cm internal wiring

LTE-3550 LTE M.2 module kit w/ 25cm internal wiring

ANT-D11 1 x Wi-Fi dual-band 2.4G/5G antenna

ANT-H11 1 x 2dBi HSUPA antenna kit



*CTOS means Configure-to-Order Service.