

# MTX-Router-EOS 5G

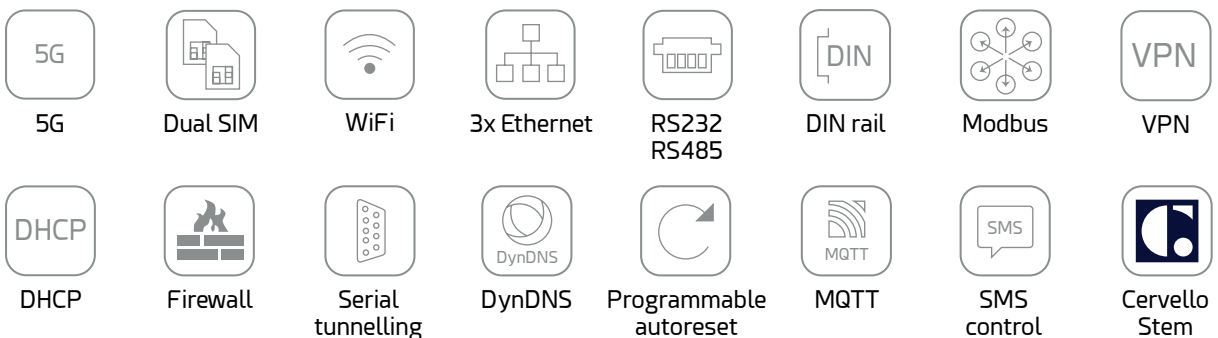
5G, dual SIM & 3x Ethernet compact industrial IoT router

The MTX-Router-EOS 5G is an entry level router developed for industrial applications. It has a very compact design with a very rugged enclosure and accessories for a wall mount. It features dual SIM, 3x Ethernet, VPN client and five antennas, included in the package (another one for GPS optional).

The MTX-Router-EOS 5G can be used in many different IoT applications like kiosk, telemetry, remote sensing, smart grid, security, industrial automation, etc.



## Main Features



## Strenghts & Benefits

- Entry level router with 5G connectivity.
- With dual SIM.
- It has 3x Ethernet ports.
- 5x antennas included, and another one for GPS optional.
- Remote management via MQTT, SMS or web server.
- DIN rail.

## Applications

- For industrial IoT applications like kiosk, telemetry, remote sensing, smart grid, security, industrial automation, etc.

# Specifications

## Router-EOS 5G

**5G NR:** 3GPP Release 15 NSA/SA operation, Sub-6 GHz

**5G NR NSA:** n38/n41/n77/n78/n79

**5G NR SA:** n1/n2/n3/n5/n7/n8/n12/n20/n25/n28/n38/n40/n41/n48\*/n66/n71/n77/n78/n79

**LTE-FDD:** B1/B2/B3/B4/B5/B7/B8/B12/B13/B14/B17/B18/B19/B20/B25/B26/B28/B29/B30/B32/B66/B71

**LTE-TDD:** B34/B38/B39/B40/B41/B42/B43/B48

**LAA:** B46

**UMTS WCDMA:** B1/B2/B3/B4/B5/B8/B19

**5G NR:** 3GPP Release 15 NSA/SA operation, Sub-6 GHz

**MIMO DL:** 4 × 4 MIMO on n1/n2/n3/n7/n25/n38/n40/n41/n48\*/n66/n77/n78/n79

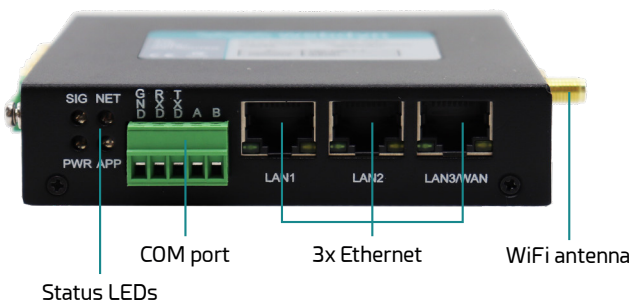
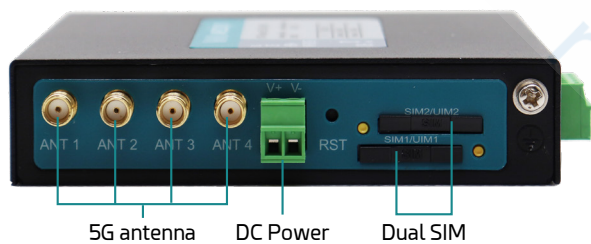
**MIMO UL:** 2 × 2 MIMO on n41/n77/n78/n79

**LTE Category** DL Cat 16/ UL Cat 18

**DL 4 × 4 MIMO** B1/B2/B3/B4/B7/B25/B30/B32/B34/B38/B39/B40/B41/B42/B43/B48/B66

## Interfaces

- 5G connectivity
- 3x Ethernet 10/100 BaseT
- 1x COM (RS232 or RS485)
- WiFi 802.11 b/g/n
- GPS (optional)



## Connectors

- 4x SMA F antenna connectors: 5G
- 1x SMA F RP antenna connector: WiFi
- 1x SMA F antenna connector: GPS (optional)
- 3x RJ45: Ethernet 10/100 BaseT
- 1x terminal block: RS232/485
- Dual SIM card
- DC power terminal block: power input

## Characteristics

- Status LEDs
- DIN rail
- DC input: 9-35 Vdc Phoenix type
- Temperature range: -35 - 75°C
- Dimensions: 115x97x24mm
- Weight: 390gr.
- Certifications: CE, FCC, RoHS, ISO9001

## Software Features

---

- DHCP server
- NAT/IP firewall
- Serial tunnelling
- Multiple DDNS provider supported
- Automatic data sending (MQTT)
- Schedule reboot, schedule online and off-line
- SMS control
- Remote management (web, SSH, Telnet)
- Remote firmware upgrade

## Packing List Included

---

- DIN rail and wallmount kits
- Ethernet cable
- WiFi antenna
- 5G antennas

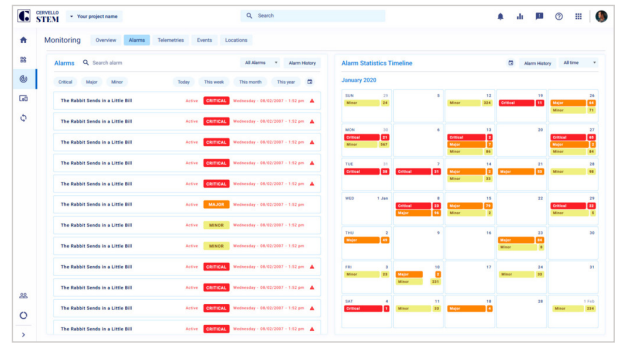
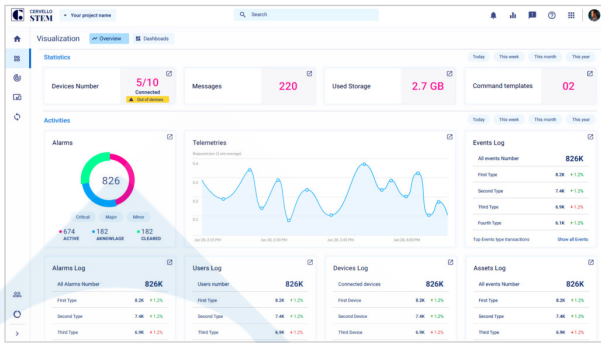
## References

---

### PRODUCTS

- MTX-Router EOS 5G WiFi **000502300054**

# Cervello Stem - IoT Platform



## GENERAL FEATURES

- Up to unlimited devices
- Autoprovisioning
- Real time dashboards
- Remote control
- Monitoring engine
- Alarms and alerts
- Rules engine
- Remote update
- Connect engine\*
- API Keys\*
- Analytics\*
- Multi-tenant\*
- White labeling\*
- Custom admin role\*

## MONITOR

- Alarms, Events and Incidents
- Tracking\*

## CONTROL

- Command template
- OTA

## DEVICES INVENTORY

- Add single from template
- Add Bulk from template and from autoprovisioning
- Manage: Device template, Groups, Assets and Bulk actions

## CONNECT

- Topics\*
- Transformation\*
- Integration keys\*

## VISUALIZE

- Dashboards
- Reports

## AUTOMATE

- Rules Engine
- Actions
- Triggers

## SECURITY

- 2-factor authentication
- SSL for end user application
- Custom admin roles\*

\*Upgrade required

\*\*Available with compatible devices with MTX-Tunnel or MTX-Titan



Singel 3 | B-2550 Kontich | Belgium | Tel. +32 (0)3 458 30 33

info@alcom.be | www.alcom.be

Rivium 1e straat 52 | 2909 LE Capelle aan den IJssel | The Netherlands

Tel. +31 (0)10 288 25 00 | info@alcom.nl | www.alcom.nl

The equipment may vary from the description in this document. Webdyn reserves the right to make changes to the product(s) and/or information contained herein without notice. This document may not be considered as a contract specification.