



Transcend Embedded Software Solutions:

Fully Secure Critical Data

In response to the ever-growing demands for greater consumer data privacy and security, Transcend has developed various kinds of advanced data encryption software, such as the TCG Opal Toolbox, the ATA Security Toolbox, and the UFD Security Toolbox. These software solutions utilize a multitude of protective technologies and functionalities for use with Transcend's storage devices, in order to help enhance data security. Additionally, Transcend offers the One Touch Recovery software, enabling the backup of essential data to hidden partitions. This facilitates quick recovery during critical emergency events such as disk damage, system malfunctions, or accidental file deletion. By leveraging these robust software tools, clients are able to promptly and effectively address various risks and threats to better ensure smooth, efficient operations and overall success.

Target Applications

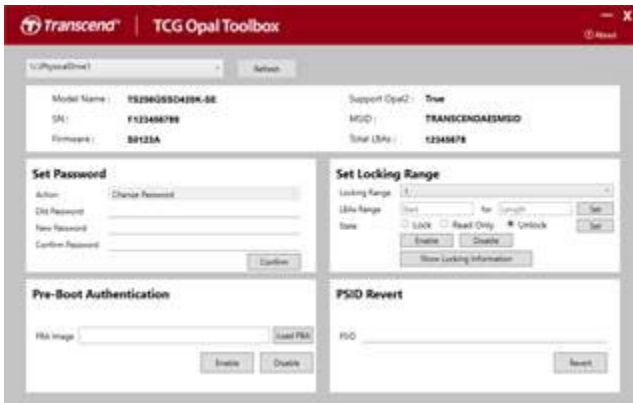
- Patient Monitoring Devices
- Robotic Arms
- Industrial Cellular Routers and Gateways
- Automated Teller Machines (ATMs)
- Surveillance Systems

Features

- Security functions include quick password setup, creating LBA ranges, pre-boot authentication, and permanent erasure of sensitive data by entering a PSID (physical secure ID)
- Remote recovery to resolve a variety of system problems and shorten overall recovery time
- The Software Development Kit (SDK) facilitates seamless integration with various systems
- Supports Transcend SSDs, USB flash drives, and memory cards
- User-friendly interface for greater accessibility and ease of use



Singel 3 | B-2550 Kontich | Belgium | Tel. +32 (0)3 458 30 33
info@alcom.be | www.alcom.be
Rivium 1e straat 52 | 2909 LE Capelle aan den IJssel | The Netherlands
Tel. +31 (0)10 288 25 00 | info@alcom.nl | www.alcom.nl



[TCG Opal Security Toolbox](#)

Multi-layer protection mechanisms



[ATA Security Toolbox](#)

Designed for SATA-based storage devices



[UFD Security Toolbox](#)

Encrypt/decrypt USB flash drives






[One Touch Recovery](#)

Back up critical data

Recommended Products

Industrial SSDs

Interface/Form Factor	Product	Capacity
PCIe Gen 4x4 M.2 2280	 MTE712A	256GB~2TB
SATA III 6Gb/s M.2 2280	 MTS970A	128GB~4TB
SATAIII 6Gb/s 2.5"	 SSD470A	128GB~4TB

Industrial USB Flash Drive

USB Interface	Product	Capacity
USB3.0 Type-A	 JetFlash 180I	8GB/16GB

Industrial Memory Card

Type	Product	Capacity
CFast 2.0	 CFX722I	4GB~128GB



Singel 3 | B-2550 Kontich | Belgium | Tel. +32 (0)3 458 30 33
info@alcom.be | www.alcom.be
Rivium 1e straat 52 | 2909 LE Capelle aan den IJssel | The Netherlands
Tel. +31 (0)10 288 25 00 | info@alcom.nl | www.alcom.nl