

Single Row/Barrier Strips

Eaton features a family of North American style, single row terminal blocks that support a broad range of electronic and electrical OEM applications. These highly configurable terminal blocks allow users to create the right product for their application using a wide variety of terminal types, mounting options, base types, fastener options, quick connects, jumpers, markings, covers, and more.

Features:

- Power ratings up to 50 A to 600 V
- Multiple wire and board terminations in the same footprint
- High configurability fits a majority of applications
- Can build to specific, per pole customer requirements

A0 & CB0



A1 & CB11



A2, LP2 & CB2



A3, LP3 & CB3



A38 & B38



A/B4



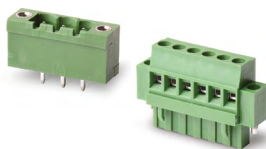
EuroMag/IEC Style

Euromag PCB terminal blocks come in a variety of terminal options to make connections easy with different wire-entry orientations to solve wire routing issues. With straight-to-board, plug and header, screwless, 2-tiered and 3-tiered configurations, the vast majority of wire-to-board applications can be easily met with the Eaton's EuroMag terminal block product portfolio.

Features:

- Modular and mold-to-length designs
- Pitch range from 2.54 mm to 15.00 mm
- Wire ratings from 2-24 AWG
- Accommodates applications up to 600 V

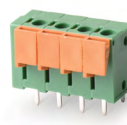
Headers & Plugs



High Current



Screwless



Cage & Screw



Spring & Screw



Tiered

