



# The Heartbeat of Electronics

SiTime is Leading the World of Precision Timing



# Disclaimers

This presentation regarding SiTime Corporation (the “Company”) contains forward-looking statements. All statements other than statements of historical facts contained in this presentation, including statements regarding the Company’s financial position, strategy and plans, and the Company’s expectations for the timing market, are forward-looking statements. These forward-looking statements are subject to a number of risks, uncertainties, and assumptions, including, but not limited to: the Company’s ability to retain and expand its customer relationships and to achieve design wins; the Company’s ability to address market and customer demands and to timely develop new or enhanced solutions to meet those demands; anticipated trends, challenges and growth in the Company’s business and the markets in which it operates; the size and growth potential of the markets for the Company’s solutions, and the Company’s ability to serve those markets; the Company’s expectations regarding competition in its existing and new markets; the Company’s ability to execute business plans and general economic factors; regulatory developments in the United States and foreign countries; the performance of the Company’s third-party suppliers and manufacturers; the Company’s and its customers’ ability to respond successfully to technological shifts or market demands; the Company’s ability to attract and retain key personnel; the accuracy of the Company’s estimates regarding capital requirements and needs for additional financing; change in industry standards to which the Company’s solutions conform; the Company’s expectations regarding its ability to obtain and maintain intellectual property protection for its technology; and the anticipated use of the net proceeds from the proposed offering. Moreover, the Company operates in a very competitive and rapidly changing environment. New risks emerge from time to time. It is not possible for the Company’s management to predict all risks, nor can the Company assess the impact of all factors on its business or the extent to which any factor, or combination of factors, may cause actual results to differ materially from those contained in any forward-looking statement. For more information concerning risks, uncertainties, and other factors that could cause results to differ materially from the expectations described in this document please refer to the Company’s most recent Quarterly Report on form 10-Q filed with the U.S. Securities and Exchange Commission (“SEC”), and other documents filed with the SEC. In light of these risks, uncertainties and assumptions, the forward-looking events and circumstances discussed in this presentation may not occur and actual results could differ materially and adversely from those anticipated or implied. Forward-looking statements represent management’s current expectations and are made only as of the date hereof. Except as required by law, neither the Company nor any other person assumes responsibility for the accuracy and completeness of the forward-looking statements. The Company undertakes no obligation to update publicly any forward-looking statements for any reason after the date of this presentation to conform these statements to actual results or to changes in the Company’s expectations, except as required by law.

This presentation includes certain non-GAAP financial measures as defined by the SEC rules. The Company believes that the presentation of non-GAAP financial measures provides important supplemental information to investors regarding financial and business trends relating to SiTime’s financial condition and results of operations. These non-GAAP financial measures are provided in addition to, and not as a substitute for or superior to measures of, financial performance prepared in accordance with U.S. GAAP. There are a number of limitations related to the use of these non-GAAP financial measures versus their nearest GAAP equivalents. For example, other companies may calculate non-GAAP financial measures differently or may use other measures to evaluate their performance, all of which could reduce the usefulness of the presented non-GAAP financial measures as tools for comparison. Please see the Appendix for a reconciliation of these Non-GAAP measures to the most comparable GAAP measure.

# Diversified Precision Timing Pureplay, Market Leader

## Investment Highlights



**Siliconizing Timing, Heartbeat of Electronics:** HQ Santa Clara, global presence



**Large Market, Expanding Share and Margins:** ~\$8B TAM <sup>(1)</sup>, 93% YoY Q3 revenue growth, 67% <sup>(2)</sup> Q3 non-GAAP GM



**Broad Customer Base:** 15,000 customers, 250 applications, 125 products, 2 billion units shipped <sup>(3)</sup>



**Technology Leader:** Leader in Silicon MEMS, analog and systems technology



**Fabless Semiconductor Business:** Fabless analog model, with operating leverage and strong barriers to entry



**Experienced Management:** Proven management team with a track record of growing public companies

1. As of 2018, Dedalus Consulting Global Markets, Applications & Competitors: 2016-2022 Analysis & Forecasts; SiTime management estimates for Clock IC market size and growth.

2. Gross Margin based on Non-GAAP figures, please see Appendix A for reconciliation to GAAP.

3. Since inception.

# Accelerating Momentum in 2021

## Revenue Visibility, Secular Tailwinds, Execution



Expansion Across End Markets

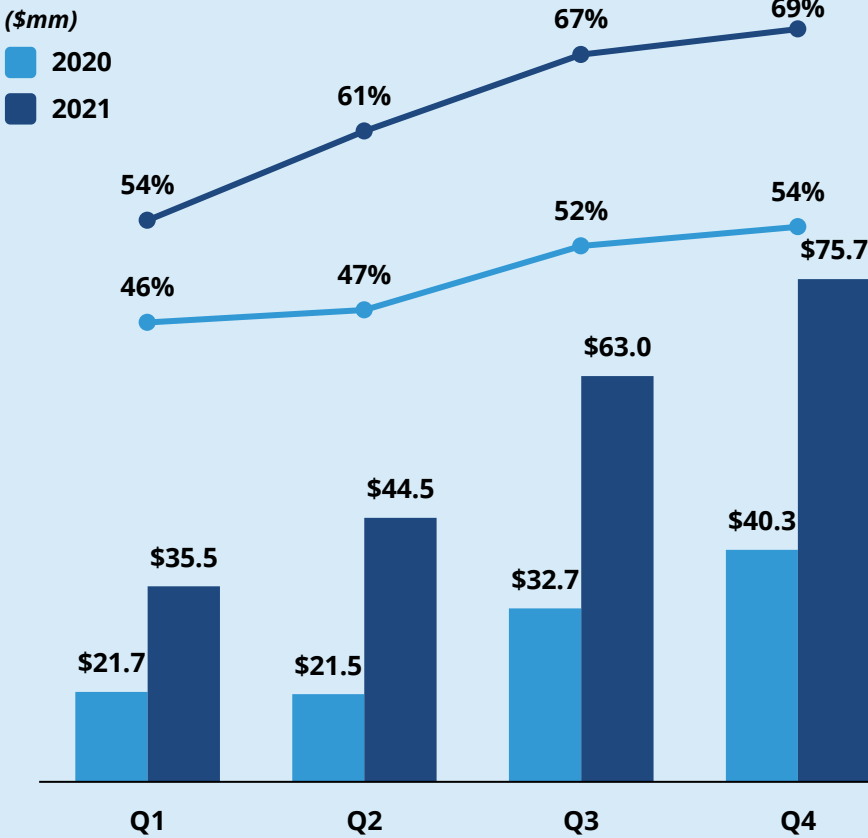


Precision Timing - More Important, Complex



Supply Chain Advantages

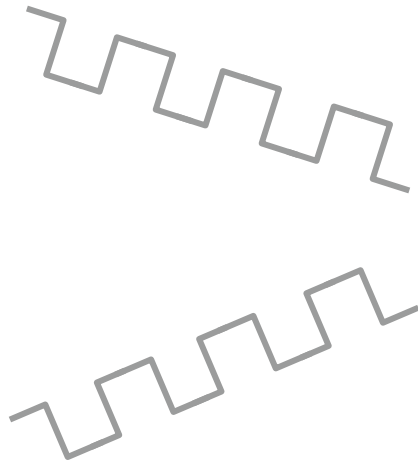
## High Revenue Growth and Non-GAAP Gross Margin <sup>(1)</sup> Expansion



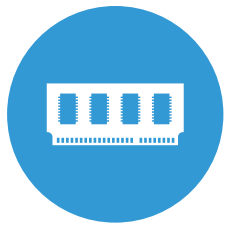
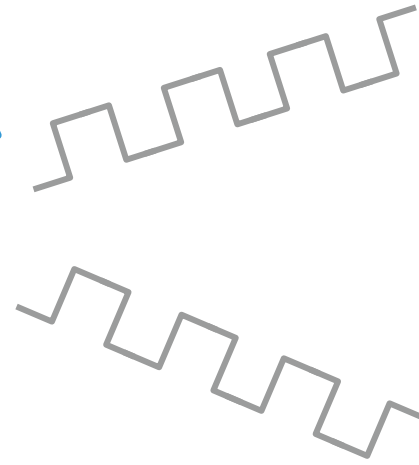
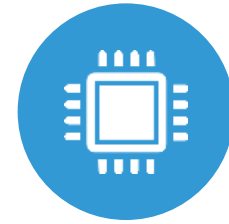
1. Gross Margin based on Non-GAAP figures, please see Appendix A and B for reconciliation to GAAP.

# Precision Timing is the Heartbeat of Every Electronic System

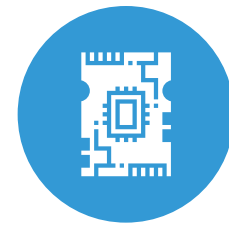
**Connectivity**



**Processor**

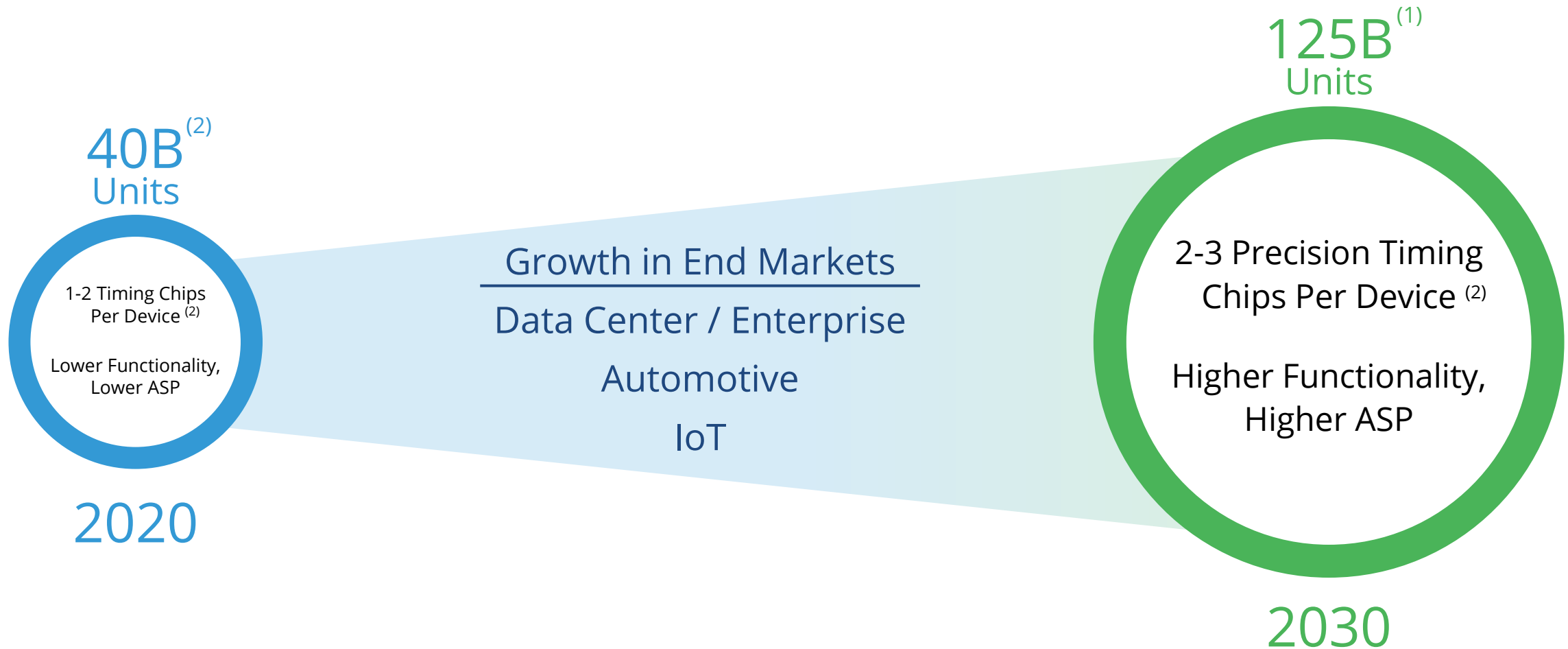


**Memory**



**SoC, ASICs, FPGAs**

# Three Drivers of Growth – Units, Density, Functionality



1. "By 2030, Each Person Will Own 15 Connected Devices — Here's What That Means for Your Business and Content", Martech Advisor, March 2019.

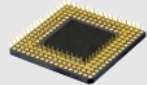
2. SiTime estimates.

# SiTime's Silicon MEMS is Disrupting Precision Timing

## Silicon Historically Wins



Processing



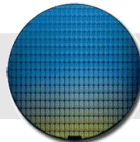
Storage



Power



Timing



## Why MEMS Wins in Precision Timing



Higher Performance



Lower Power



Smaller Size



Programmable



Environmentally Robust



High Reliability

## Once a Leader in MEMS, Always a Leader in MEMS

Timing



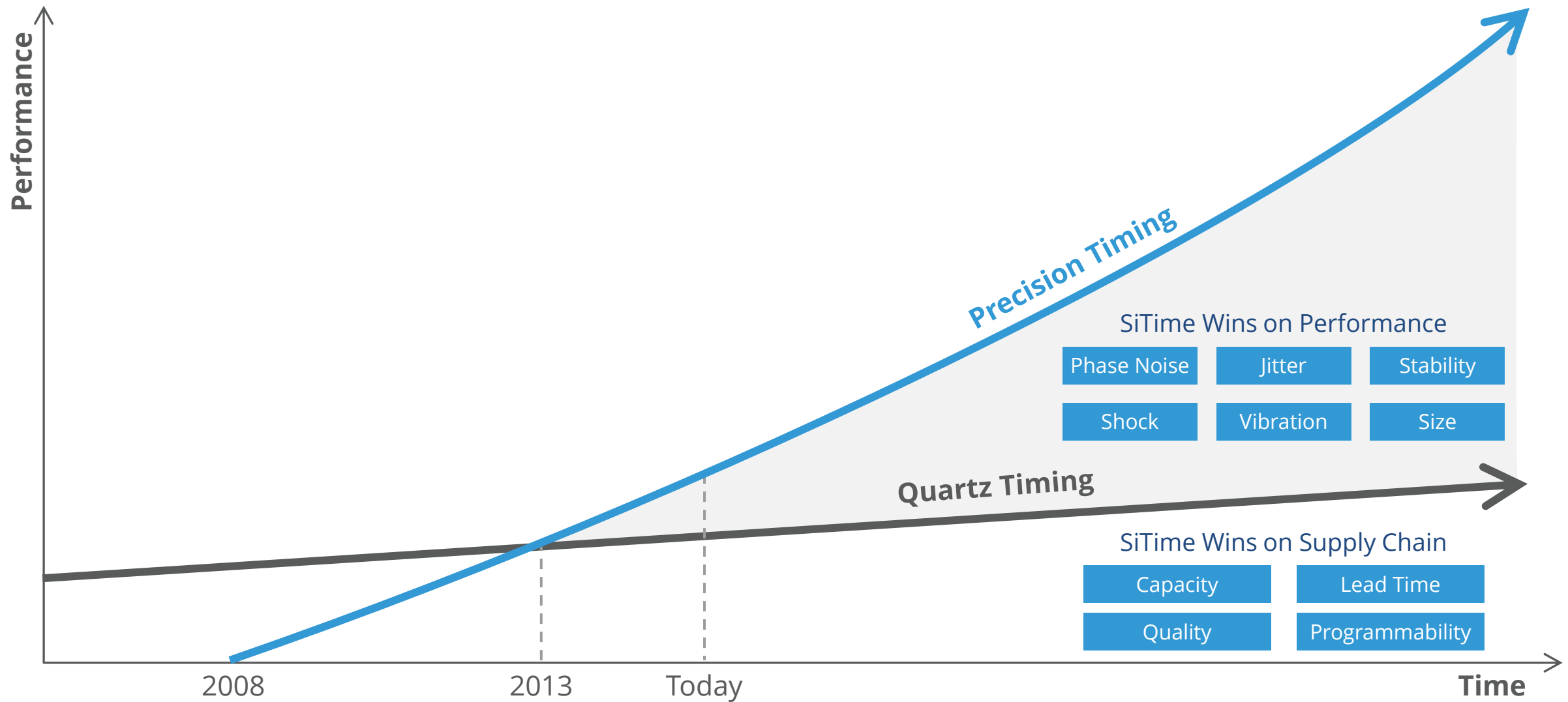
Radio Frequency



Inertial Sensors



# Winning with Innovation Now and Expected in the Future



Note: For illustrative purposes only. The time axis is not for scale and does not point to a specific time period nor does the performance axis imply a specific rate of innovation.

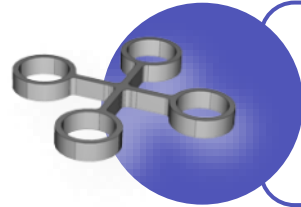


# SiTime Serves a Large and Growing Market

## SiTime Products

### Resonators

Launched 2020

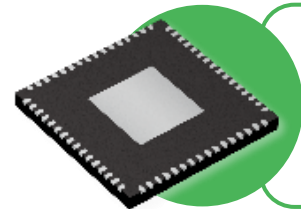


**\$4B**

CY2024E Resonators Market Size

### Clock ICs

Launched 2020

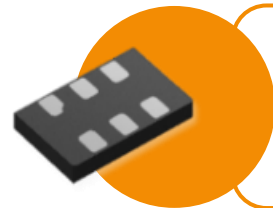


**\$1B**

CY2024E Clock IC Market Size

### Oscillators

Majority of SiTime's Revenue to Date



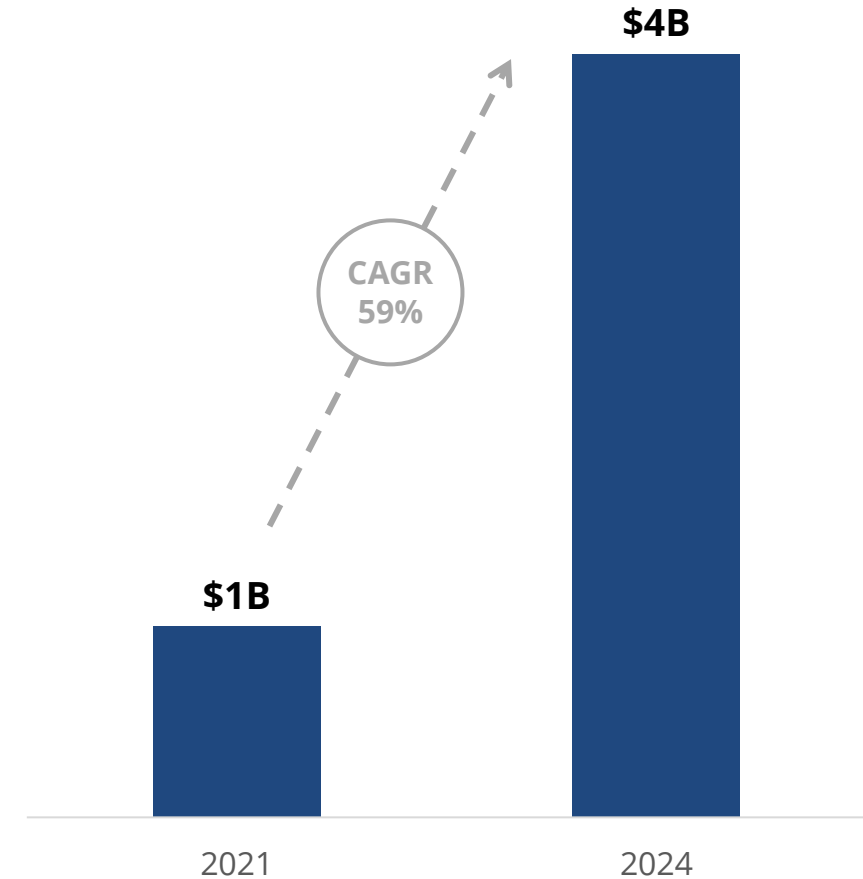
**\$5B**

CY2024E Oscillators Market Size

## Total Timing Market <sup>(1)</sup>

## SiTime SAM <sup>(2)</sup>

(\$ in billions)

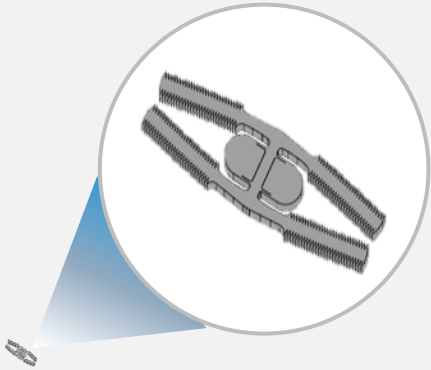


1. Dedalus Consulting, April 2019; SiTime management estimates for Clock IC market size and growth.

2. SiTime estimates.

# SiTime's Core Technologies Solve Difficult Timing Problems

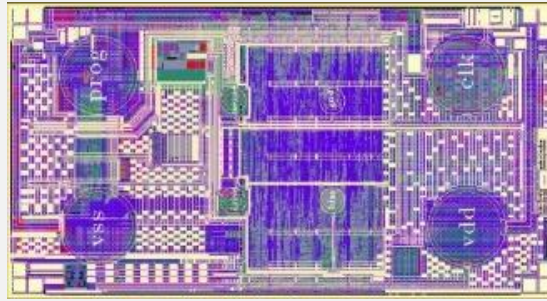
## Silicon MEMS



- 3<sup>rd</sup> gen MEMS
- Materials science expertise
- Proprietary MEMS process
- SiTime simulation tools

Fabrication: Bosch

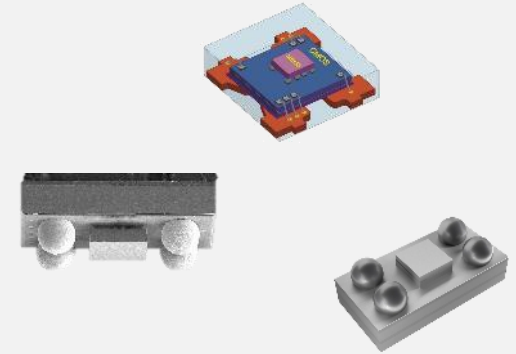
## Programmable Analog



- 4<sup>th</sup> generation circuits
- Revolutionary temp sensors
- Low power, high performance
- Superior precision

Fabrication: TSMC

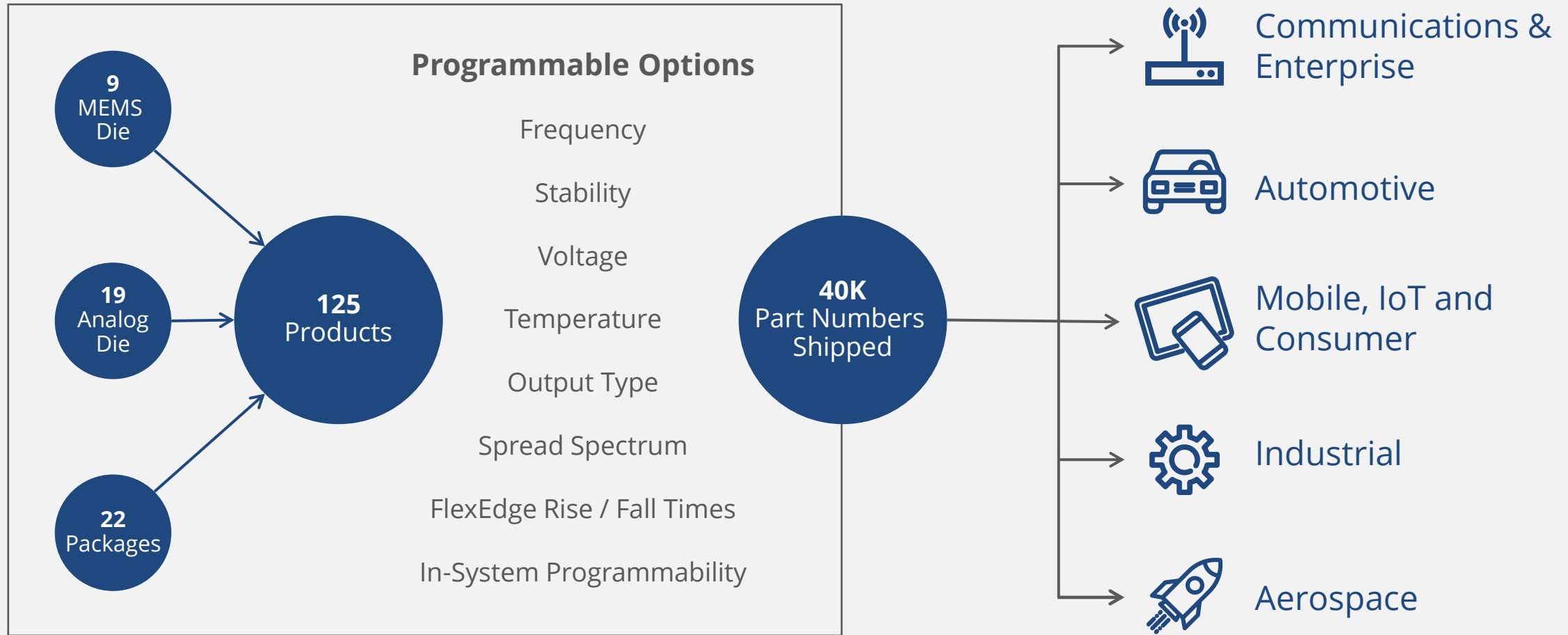
## Systems



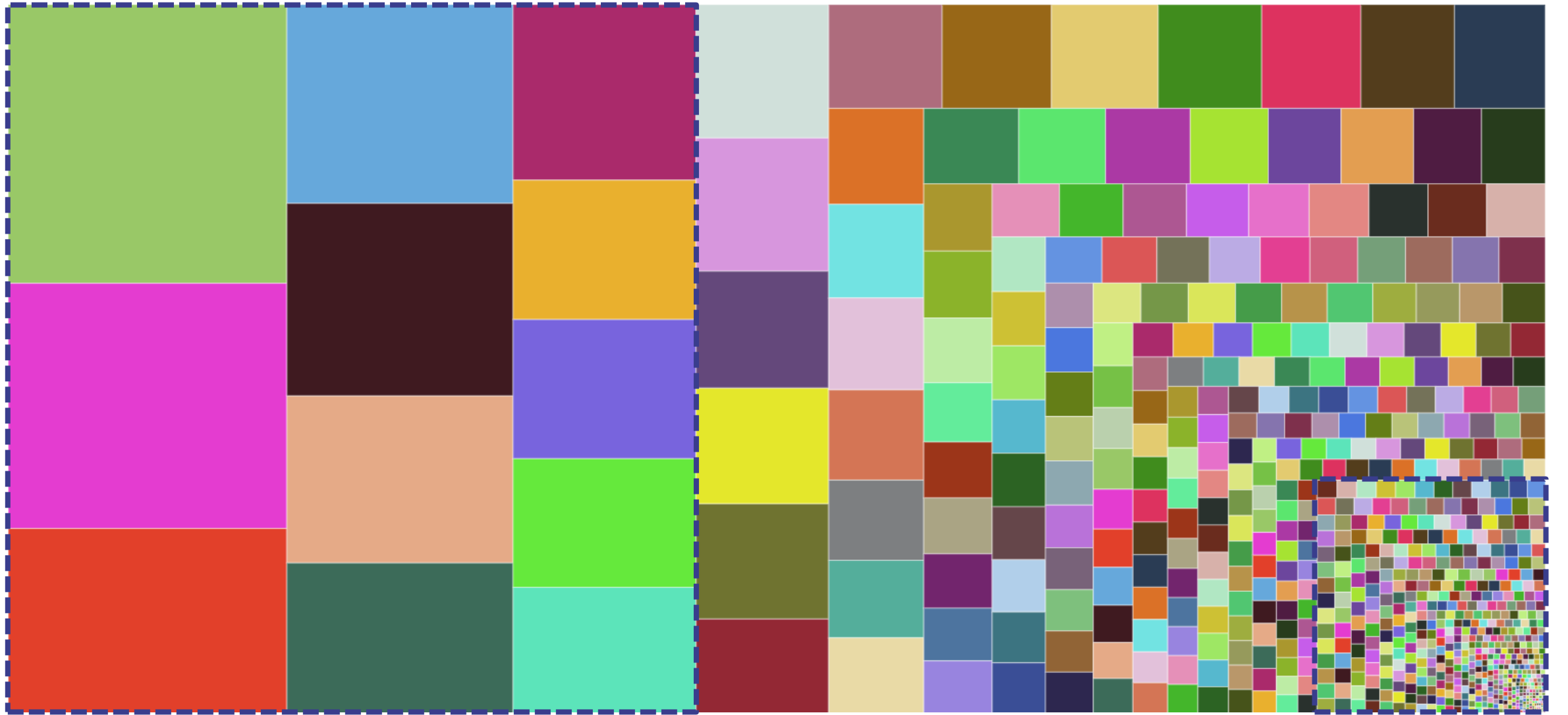
- Semi packaging & integration
- Thermoelectric optimization
- Automation
- Superior performance

Fabrication: ASE, UTAC, Carsem

# Programmability Fulfills Customer Needs



# Growing and Diversified Base of 700 OEM Customers (1)



> \$1M customers

470 OEM customers

Note: The above chart represents relative revenue contribution for SiTime's customers in Q3'21.

1. Excludes SiTime's largest customer, which accounted for 20% of Q3'21 revenue.

# End Market #1 – Communications and Enterprise

## Drivers

- 5G driving network densification
- Hyperscaler growth
- Proliferation of edge computing

## Why SiTime Precision Timing?

- Precision under changing temperature
- Stability under vibration
- High reliability



SMALL CELL



4G+ / 5G RRH



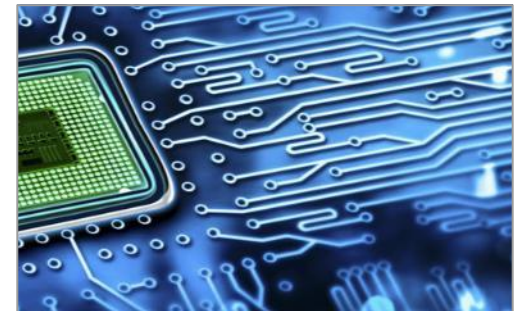
OPTICAL MODULE



ENTERPRISE SWITCH

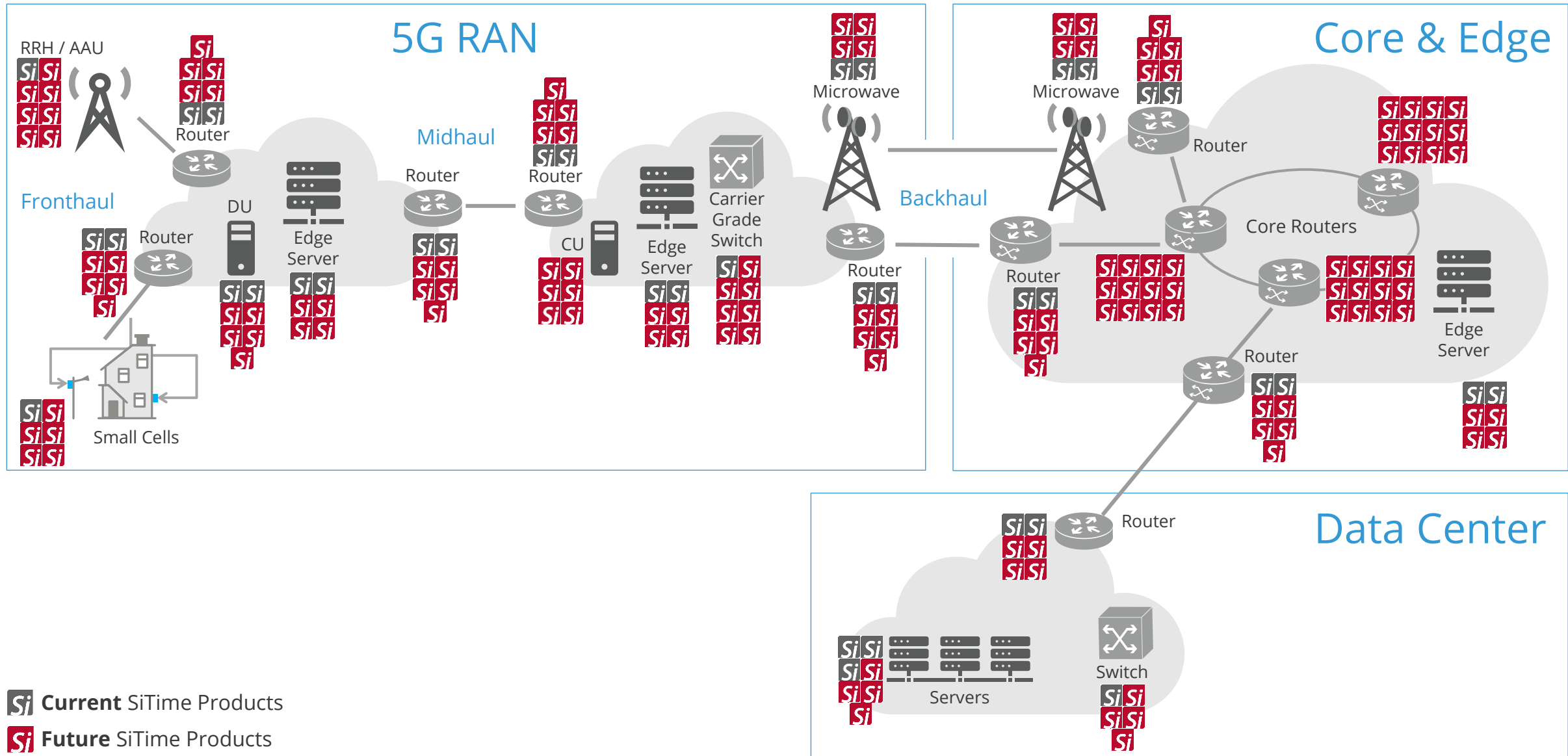


SERVER



INTERCONNECTS

# Current and Future Opportunities in Comms-Enterprise

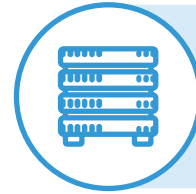


**SiSi** Current SiTime Products

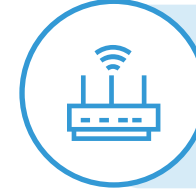
**Si** Future SiTime Products



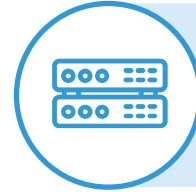
# Datacenter – Win with Precision Performance



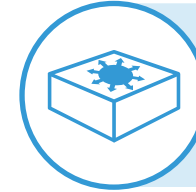
**Server**



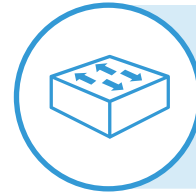
**WAN  
Routers**



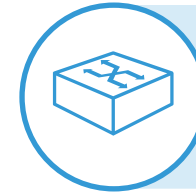
**Timing  
Servers**



**Spine  
Switches**



**Leaf  
Switches**



**Switches**



**Storage**

# End Market #2 – Automotive, Industrial and Aerospace

## Drivers

- Automotive – 1,000x increase in data volume <sup>(1)</sup>
- Industry 4.0 – connectivity, sensing
- Aerospace – 8x increase in number of satellites <sup>(2)</sup>

## Why SiTime Precision Timing?

- High shock and vibration survivability
- High reliability
- Programmable architecture

1. Automotive Edge Computing Consortium estimate in 2020.  
2. "Large LEO Satellite Constellations: Will It Be Different This Time?", McKinsey 2020.  
Assumes growth from ~6K today to 50K in 10 years.



ADAS COMPUTER



AUTOMOTIVE CAMERAS



INDUSTRIAL MACHINERY



DRONES



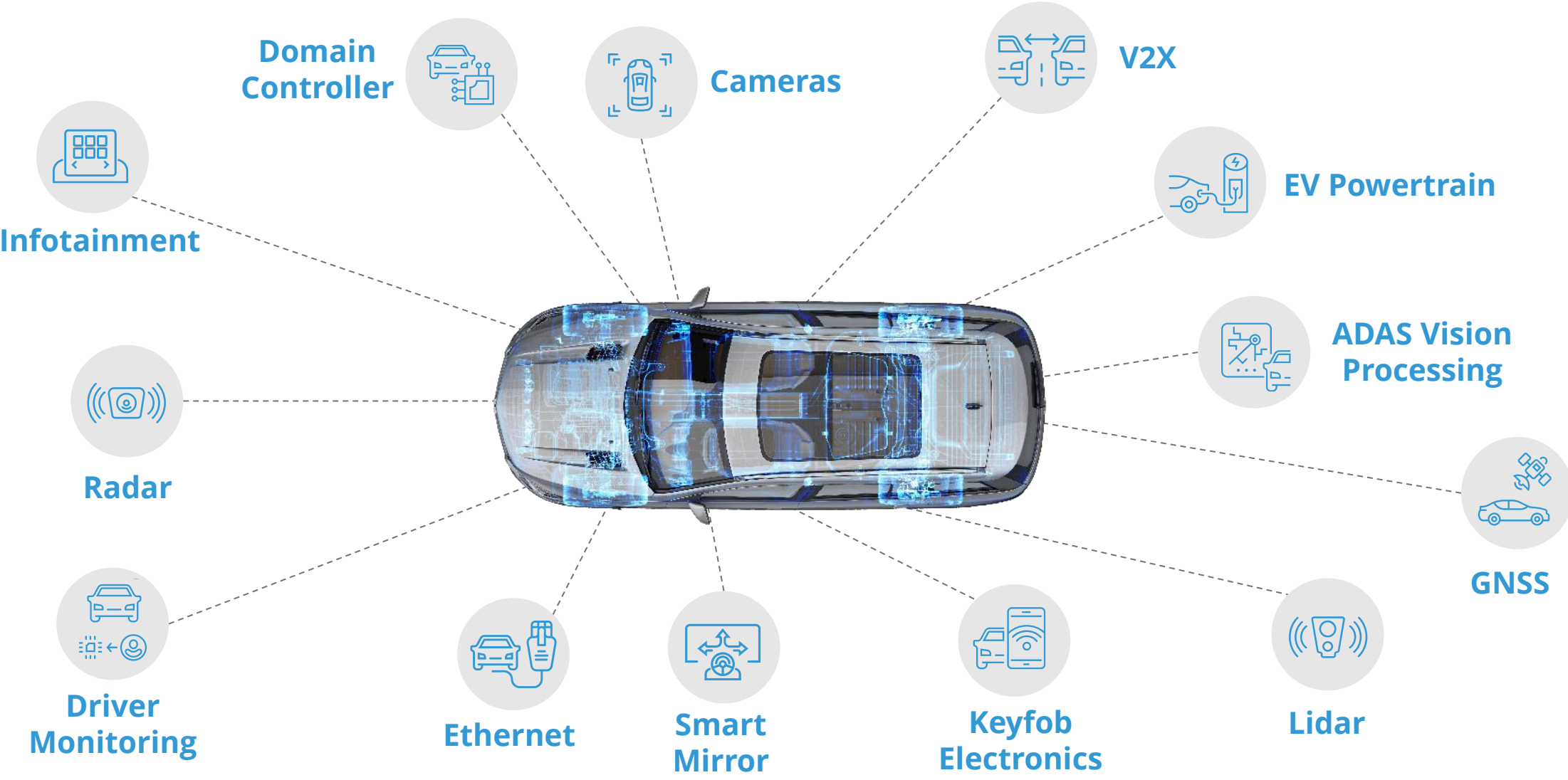
MEDICAL ELECTRONICS



SOLAR INVERTERS



# Automotive – Win with Reliability and Performance



# End Market #3 – Mobile, IoT and Consumer

## Drivers

- Billions of internet-connected devices
- Increasing functionality
- Smaller size

## Why SiTime Precision Timing?

- Ultra-small size
- Long battery life
- Fabless semi process & supply chain



SMARTPHONE



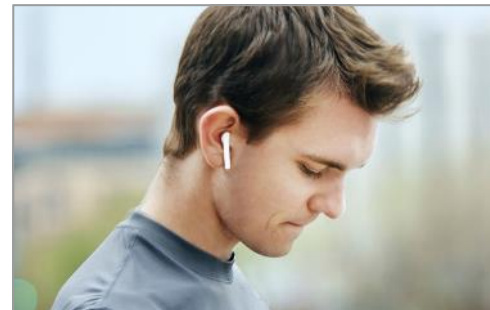
SMART WATCH



STYLUS & TABLETS



METVERSE






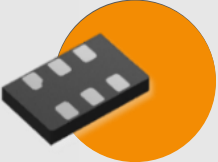
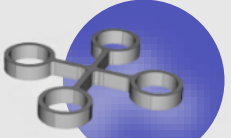
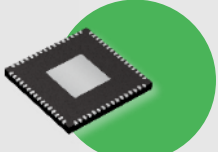


HEADPHONES



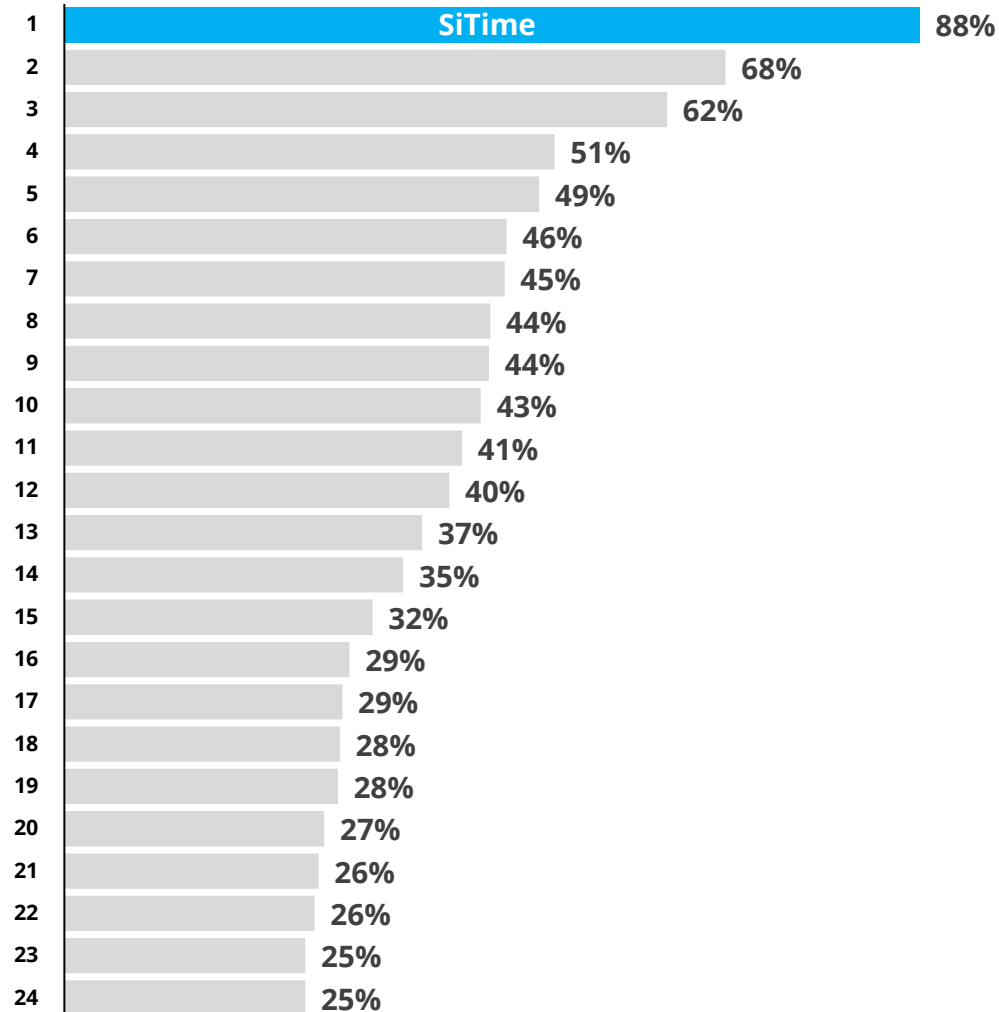
PERSONAL HEALTH TRACKER

# Competitive Landscape

	MEMS 	Quartz (No MEMS Silicon)  	Analog Timing  
 Oscillator	✓	✓ Source Externally	✓ Source Externally
 Resonator	✓	✓	✗
 Clock IC	✓	✗	✓

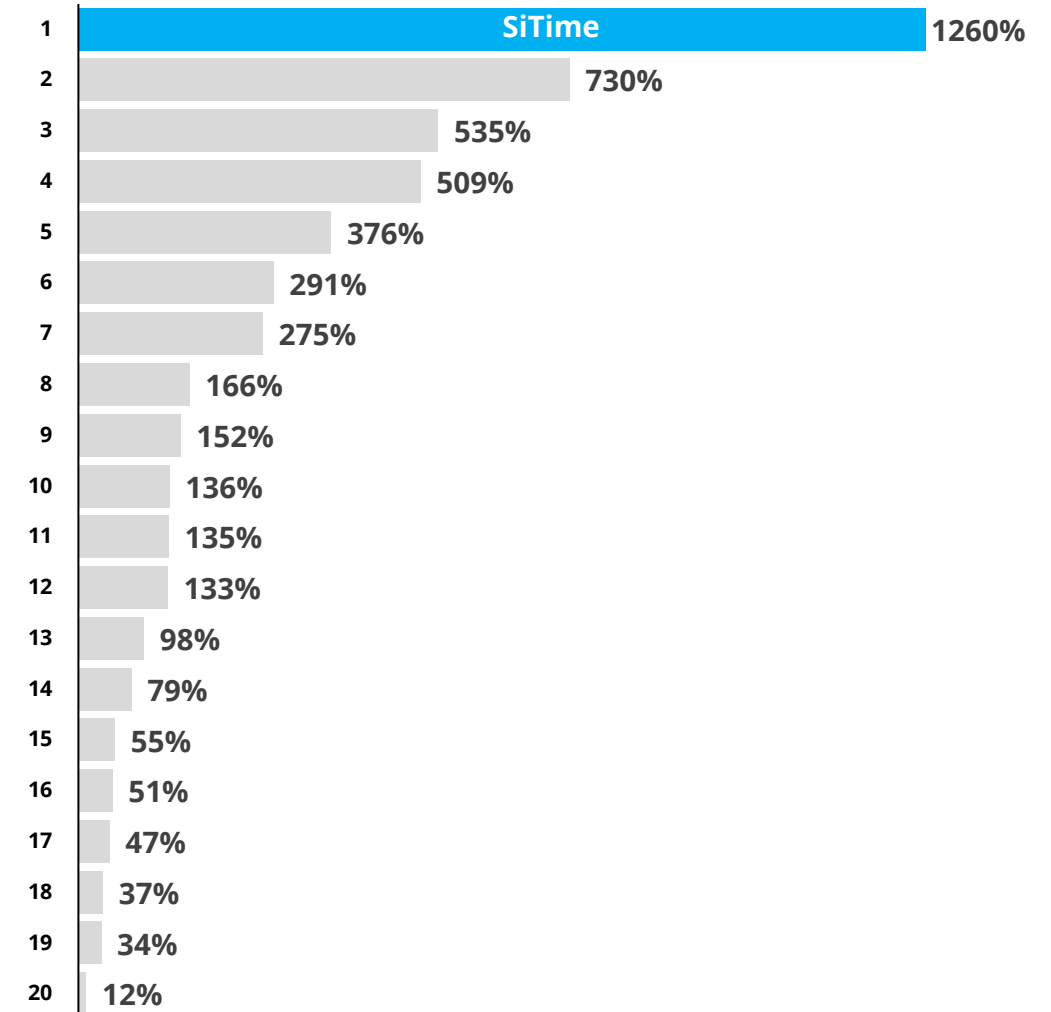
# Fastest Revenue Growth vs. Semi Peers & Outstanding Stock Performance

CY21 % Revenue Growth <sup>(1)</sup> <sup>(2)</sup>



Post-IPO Stock Price Performance <sup>(1)</sup>

Selected Tech IPOs Since Jan 1, 2019





Financials



# Financial Results

(\$ in millions)

	Q1 2021	Q2 2021	Q3 2021	Q4 2021	2021	Q1 2022
Sales	\$35.5	\$44.5	\$63.0	\$75.7	\$218.8	\$70.3
YoY Growth	63%	107%	93%	88%	88%	98%
Gross Margin %	54%	61%	67%	69%	65%	65%
R&D %	23%	20%	16%	16%	18%	21%
SG&A %	20%	19%	16%	14%	17%	14%
Operating Margin %	11%	22%	35%	39%	30%	30%

Note: Financials above based on Non-GAAP figures, please see Appendix A and B for reconciliation to GAAP.



# Balance Sheet Highlights

*(\$ in millions)*

**Mar 31, 2022**

Cash and Cash Equivalents

\$571.5

Total Assets

\$698.0

Total Debt

\$0.0

Total Liabilities

\$44.2

Total Stockholders' Equity

\$653.8



# Appendix



# Appendix A: Reconciliation of 2022 GAAP to Non-GAAP Results

*(\$ in millions)*

**Q1 2022**

Sales	<b>\$70.3</b>
GAAP Gross Profit	\$45.2
Stock-based Compensation	\$0.7
<b>Non-GAAP Gross Profit</b>	<b>\$45.9</b>
GAAP R&D Expenses	\$20.6
Stock-based Compensation	(\$6.1)
<b>Non-GAAP R&amp;D Expenses</b>	<b>\$14.5</b>
GAAP SG&A Expenses	\$18.6
Stock-based Compensation	(\$8.4)
<b>Non-GAAP SG&amp;A Expenses</b>	<b>\$10.2</b>
GAAP Operating Income (Loss)	\$6.1
Stock-based Compensation	\$15.2
<b>Non-GAAP Operating Income (Loss)</b>	<b>\$21.3</b>

# Appendix B: Reconciliation of 2021 GAAP to Non-GAAP Results

(\$ in millions)

	2021	Q1 2021	Q2 2021	Q3 2021	Q4 2021
Sales	\$218.8	\$35.5	\$44.5	\$63.0	\$75.7
GAAP Gross Profit	\$139.4	\$18.8	\$26.8	\$41.7	\$52.1
Stock-based Compensation	\$1.8	\$0.4	\$0.5	\$0.4	\$0.5
Non-GAAP Gross Profit	\$141.2	\$19.2	\$27.3	\$42.1	\$52.6
GAAP R&D Expenses	\$52.1	\$11.2	\$12.1	\$13.0	\$15.9
Stock-based Compensation	(\$12.7)	(\$3.0)	(\$3.0)	(\$3.1)	(\$3.7)
Non-GAAP R&D Expenses	\$39.4	\$8.2	\$9.1	\$9.9	\$12.2
GAAP SG&A Expenses	\$54.5	\$11.1	\$12.7	\$14.6	\$16.1
Stock-based Compensation	(\$17.8)	(\$4.0)	(\$4.2)	(\$4.4)	(\$5.3)
Non-GAAP SG&A Expenses	\$36.7	\$7.1	\$8.5	\$10.2	\$10.8
GAAP Operating Income (Loss)	\$32.9	(\$3.5)	\$2.1	\$14.1	\$20.1
Stock-based Compensation	\$32.3	\$7.4	\$7.6	\$8.0	\$9.4
Non-GAAP Operating Income (Loss)	\$65.2	\$3.9	\$9.7	\$22.0	\$29.5