



Luminen

Luminen 5 / 8 / 10 / 15

Live Better. Embrace Luxury.

3-in-1 Luxury Smart Control

Touch Screen | Gateway | Mini Server



Singel 3 | B-2550 Kontich | Belgium | Tel.+32(0)3 458 30 33
 info@alcom.be | www.alcom.be
 Rivium 1e straat 52 | 2909 LE Capelle aan den IJssel | The Netherlands
 Tel.+31(0)10 288 25 00 | info@alcom.nl | www.alcom.nl

A STELIAU TECHNOLOGY COMPANY



Redefining Luxurious Smart Control

Smart control technology is revolutionizing the way we live and experience our environment. In the past, the idea of having your home or office connected to the Internet and communicating with your devices was a dream.

Introducing Luminen.

Luminen is a luxurious smart control that connects your smart appliances and devices to deliver a convenient, user friendly, and personalized experience across your home, office, or hospitality space.



The Luminen smart control is elegantly designed and meticulously crafted with premium materials to complement your contemporary decor. This small form-factored smart control includes a plethora of connectivity and sensor functionality, enabling you with the convenience of controlling virtually all the technology in your space.

And to address the new norm in a post-pandemic world, the Luminen includes an antimicrobial surface and is voice recognition ready.



Personalize Your Residence in Elegance

Be immersed in an elegant home experience that is designed to bring peace of mind. This luxurious smart control enables personalization and automation of your residence, while conveniently setting the tone and mood of your space with a premium design.

- All-in-one design minimizes cost and space for additional devices
- Set the tone and mood of your room with ambient lighting
- Compatible with numerous KNX-certified devices-
- Seamlessly connect and control your AIoT devices such as smoke detector, air quality sensor, etc.
- Easy installation through universal gang-box support



Connect and Control Your Modern Workspace

Seamlessly control and automate commercial systems of any size, while offering high computing performance and connectivity to improve operation efficiency in your elegant yet modern facility.

- High-performance computing ensuring smooth operation during peak times
- Enhanced security through AI-ready facial recognition and NFC/BT identification
- Antimicrobial display for enhanced sanitization
- Secured by Qbic Fortify+ to ensure access, data and environmental protection



Entertain and Delight Your Guests

Improve guest experience by supporting a broad range of hospitality services while enabling in-room controls in a luxurious design that seamlessly blends with your elegant yet modern decor.

- Enhance customers' experience with smart control that remotely controls in-room appliances
- Supports reduction in hotel operational costs through a digitally responsive environment
- Supports marketing activities through a broad range of goods, services, discounts, and other information
- Fanless system for quiet operation and low power consumption
- Maintain sanitization through antimicrobial surface or voice recognition functionality



Luminen Family

Welcome the Luminen family of smart control devices. Available in various sizes and orientations, these elegantly designed smart controls are suited for your unique space.



Three-in-one Design



Bluetooth 5.0 Connectivity



WiFi 6 Connectivity



Qbic Development kit



Superb Speakers



ALS (Ambient light sensor)



Antimicrobial Corning® Gorilla® Glass



KNX protocols integrated

Robust 3-in-1 Design

Conveniently included with a touch screen, gateway, and a mini server, this combination reduces the number of devices and possible complications required during home installation and operation.



AI Ready

With an AI processing power of 2.3 TOPS, Luminen expands potential AI applications such as user identification, authentication or safety capabilities.

Broad Range of Connectivity

Equipped with a wide range of IO ports that allows flexible integration with other devices. Latest wireless connectivity includes WiFi 6 and Bluetooth 5.

Effortless Installation

Supports globally universal gang-box, and specifically designed for a minimal wall to device clearance for a clean and modern look. US & EU compatible.

Hygiene Focused

Providing additional protection around the clock, Luminen includes an antimicrobial surface and supports voice recognition to meet the needs of users and guests.

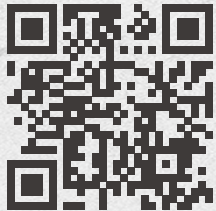
KNX Compatible

Personalize your space with a flexible KNX-compatible device that can communicate and automate a broad range of devices.




Qbic Technology is a leading innovator and designer of ARM-based industrial computers for AIoT, IoT, and Smart Device applications in the smart home, office, retail, and education industries. Built with quality and reliability in mind, Qbic's industrial-grade products are made to last and deliver on their promises.


And with core expertise ranging from mechanical and software engineering, security system design for Android and Linux, and industrial design, Qbic is committed to providing unwavering support for its partners' success. Qbic's products have also won iF Design Awards, validating the products' proof of design quality by a global audience.



Qbic Technology Co., Ltd 26F-12, No. 99, Sec. 1, Xintai 5th Rd, Xizhi Dist, New Taipei City, 22175 Taiwan

Global Region ✉ info@qbictechnology.com

 www.qbictechnology.com

 +886-2-2697-2000

US Region ✉ info.us@qbictechnology.com

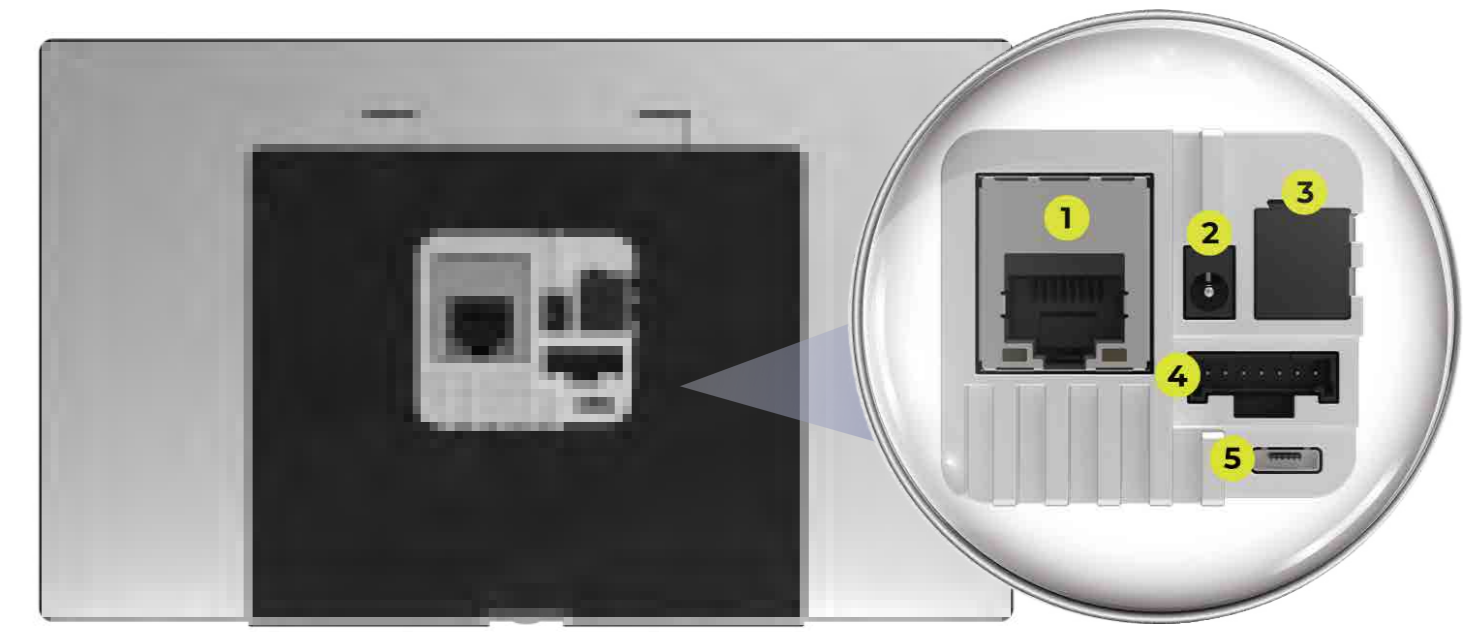
Follow us 

Please verify specifications before ordering. The information in this brochure is intended for reference purposes only. All product specifications are subject to change without notice. No part of this publication may be reproduced in any form or by any means, including electronically, by photocopying, recording or otherwise, without the prior written permission of the publisher. All brand and product names are trademarks or registered trademarks of their respective companies. © Qbic Technology Co., Ltd. 2024



Rich Ports & Connectivity

The Luminen family is equipped with a wide range of IO ports that enables flexible integration with various ecosystems. Besides physical IO ports, Luminen features wireless connectivity with the latest WiFi 6 and Bluetooth 5 technology.



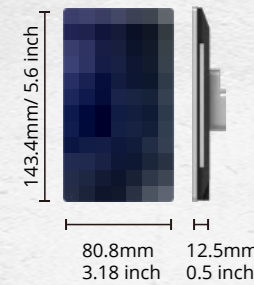
- 1. RJ-45
- 2. Power
- 3. KNX Bus (2Wire)
- 4. RS-485, CAN Bus
- 5. USB Micro AB (OTG)

The product image above reflects the Luminen 8" model and may differ from other Luminen models. Please verify the specifications before ordering.

Luminen 5 / 8 / 10 / 15

Specifications

· Luminen 5

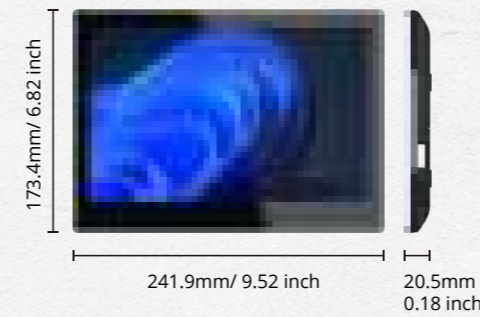


· Luminen 8

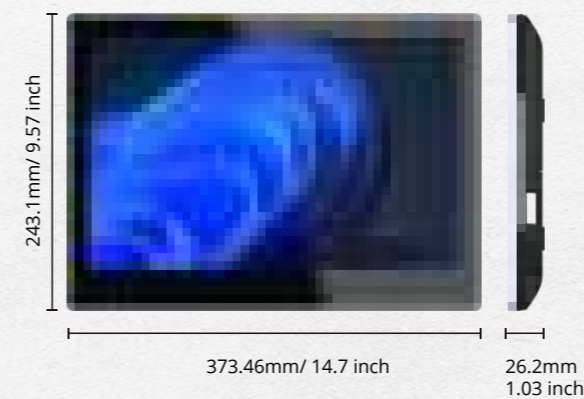


	Luminen 5	Luminen 8	
Features	OS	Android 11 / Android 13 / Linux / Yocto BSP	Android 11 / Android 13 / Linux / Yocto BSP
	Touch	Yes, Multi touch	Yes, Multi touch
	NFC	N/A	NFC (13.56MHz)
	Memory	4GB LPDDR4	4GB LPDDR4
	Storage	32GB eMMC	32GB eMMC
	Video decoder	H.264 / H.265,VC-1, MPEG-4, VP9/VP8	H.264 / H.265,VC-1, MPEG-4, VP9/VP8
	Image codecs	JPEG/BMP/GIF/PNG	JPEG/BMP/GIF/PNG
	Audio codecs	MPEG/OGG/AAC	MPEG/OGG/AAC
	CPU	ARM Quad-core Cortex-A53 up to 1.8GHz (64 bit)	ARM Quad-core Cortex-A53 up to 1.8GHz (64 bit)
	NPU	Neural Processing Unit (NPU) 2.3TOPS	Neural Processing Unit(NPU) 2.3TOPS
	PoE	PoE, 802.3af compliant	PoE, 802.3af compliant
	Beacon (BLE)	Yes	Yes
	Microphone	Dual microphones	Dual microphones
	Display	Size	5.5" (IPS)
Resolution		720*1280 (portrait mode)	1280*800
Brightness		0-300 nits	0-300 nits
Ethernet		1 x RJ45 (10M/100M/1000M), Gigabit Ethernet with Time Sensitive Networking (TSN)	1 x RJ45 (10M/100M/1000M), Gigabit Ethernet with Time Sensitive Networking (TSN)
I/O Interface	WLAN	802.11 a/b/g/n/ac/ax	802.11 a/b/g/n/ac/ax
	Bluetooth	BT 5.0	BT 5.0
	USB	1x USB Micro AB, USB OTG	1x USB Micro AB, USB OTG
	Speaker	1Wx1	1Wx2
Control Interface	Camera	N/A	1x 5MP Fixed focus
	KNX	KNX Bus, 2 wire	KNX Bus, 2 wire
	Serial port	CAN Bus, RS485	CAN Bus, RS485
Mechanical & Environment	Dimension (WxHxD) (Full depth)	80.8 x 143.4 x 12.5(24.8) mm 3.18 x 5.65 x 0.5(1.05) inch	213.2 x 127.6 x 13.5(27.5) mm 8.4 x 5.02 x 0.53(1.08) inch
	Mounting	One-gang mount	One-gang mount, Tabletop
	Housing	Plastic & Aluminum Alloy	Plastic & Aluminum Alloy
	Environment	Operating Temp. 0~40°C 32-104 °F	Operating Temp. 0~40°C 32-104 °F

· Luminen 10



· Luminen 15



	Luminen 10	Luminen 15	
Features	OS	Android 11 / Android 13 / Linux / Yocto BSP	Android 11 / Android 13 / Linux / Yocto BSP
	Touch	Yes, Multi touch	Yes, Multi touch
	NFC	NFC (13.56MHz)	NFC (13.56MHz)
	Memory	4GB LPDDR4	4GB LPDDR4
	Storage	32GB eMMC	32GB eMMC
	Video decoder	H.264 / H.265,VC-1, MPEG-4, VP9/VP8	H.264 / H.265,VC-1, MPEG-4, VP9/VP8
	Image codecs	JPEG/BMP/GIF/PNG	JPEG/BMP/GIF/PNG
	Audio codecs	MPEG/OGG/AAC	MPEG/OGG/AAC
	CPU	ARM Quad-core Cortex-A53 up to 1.8GHz (64 bit)	ARM Quad-core Cortex-A53 up to 1.8GHz (64 bit)
	NPU	Neural Processing Unit(NPU)2.3TOPS	Neural Processing Unit(NPU)2.3TOPS
	PoE	PoE, 802.3af/at compliant	PoE, 802.3at compliant
	Beacon (BLE)	Yes	Yes
	Microphone	Dual microphones	Dual microphones
	Display	Size	10.1" (IPS)
Resolution		1920*1200	1920*1080
Brightness		0-300 nits	0-300 nits
Ethernet		1 x RJ45 (10M/100M/1000M), Gigabit Ethernet with Time Sensitive Networking (TSN)	1 x RJ45 (10M/100M/1000M), Gigabit Ethernet with Time Sensitive Networking (TSN)
I/O Interface	WLAN	802.11 a/b/g/n/ac/ax	802.11 a/b/g/n/ac/ax
	Bluetooth	BT 5.0	BT 5.0
	USB	1x USB 2.0 A, USB Type-C for adb	2x USB 2.0 A, USB Type-C for adb
	Speaker	1Wx2	1Wx2
Control Interface	Camera	1x 5MP Fixed focus	1x 5MP Fixed focus
	KNX	KNX Bus, 2 wire	KNX Bus, 2 wire
	Serial port	CAN Bus, RS485	CAN Bus, RS485
Mechanical & Environment	Dimension (WxHxD) (Full depth)	241.9 x 173.4 x 20.8 mm 9.52 x 6.82 x 0.81 inch	373.5 x 243.1 x 26.2 mm 14.7 x 9.57 x 1.03 inch
	Mounting	One-gang, Tabletop, Surface & glass mount	Surface & glass mount, Tabletop
	Housing	Plastic & Aluminum Alloy	Plastic & Aluminum Alloy
	Environment	Operating Temp. 0~40°C 32-104 °F	Operating Temp. 0~40°C 32-104 °F



Qbic Technology is a leading innovator and designer of ARM-based industrial computers for AIoT, IoT, and Smart Device applications in the smart home, office, retail, and education industries. Built with quality and reliability in mind, Qbic's industrial-grade products are made to last and deliver on their promises.

And with core expertise ranging from mechanical and software engineering, security system design for Android and Linux, and industrial design, Qbic is committed to providing unwavering support for its partners' success. Qbic's products have also won iF Design Awards, validating the products' proof of design quality by a global audience.



Qbic Technology Co., Ltd 26F-12, No. 99, Sec. 1, Xintai 5th Rd, Xizhi Dist, New Taipei City, 22175 Taiwan

Global Region ✉ info@qbictechnology.com 🌐 www.qbictechnology.com ☎ +886-2-2697-2000

US Region ✉ info.us@qbictechnology.com

Follow us

Please verify specifications before ordering. The information in this brochure is intended for reference purposes only. All product specifications are subject to change without notice. No part of this publication may be reproduced in an form or by any means, including electronically, by photocopying, recording or otherwise, without the prior written permission of the publisher. All brand and product names are trademarks or registered trademarks of their respective companies. © Qbic Technology Co., Ltd. 2024



240425v1.0



Luminen

Luminen 5 / 8 / 10 / 15

Live Better. Embrace Luxury.

3-in-1 Luxury Smart Control

Touch Screen | Gateway | Mini Server

