

WORLDWIDE OFFICES

ADLINK Technology, Inc.

9F, No.166 Jian Yi Road, Zhonghe District
New Taipei City 235, Taiwan
新北市中和區建一路166號9樓
Tel: +886-2-8226-5877
Fax: +886-2-8226-5717
Email: service@adlinktech.com

Ampro ADLINK Technology, Inc.

5215 Hellyer Avenue, #110 San Jose, CA 95138, USA
Tel: +1-408-360-0200
Toll Free: +1-800-966-5200 (USA only)
Fax: +1-408-360-0222
Email: info@adlinktech.com

ADLINK Technology Singapore Pte. Ltd.

84 Genting Lane #07-02A, Cityneon Design Centre,
Singapore 349584
Tel: +65-6844-2261
Fax: +65-6844-2263
Email: singapore@adlinktech.com

**ADLINK Technology Singapore Pte Ltd.
(Indian Liaison Office)**

#50-56, First Floor, Spearhead Towers
Margosa Main Road (between 16th/17th Cross)
Malleswaram, Bangalore - 560 055, India
Tel: +91-80-65605817, +91-80-42246107
Fax: +91-80-23464606
Email: india@adlinktech.com

ADLINK Technology Japan Corporation

〒101-0045 東京都千代田区神田鍛冶町3-7-4
神田374ビル4F
KANDA374 Bldg. 4F, 3-7-4 Kanda Kajicho,
Chiyoda-ku, Tokyo 101-0045, Japan
Tel: +81-3-4455-3722
Fax: +81-3-5209-6013
Email: japan@adlinktech.com

**ADLINK Technology, Inc.
(Korean Liaison Office)**

경기도 성남시 분당구 수내로46번길4 경동빌딩 2층 (수내동 4-4번지) (우)
463-825
2F, Kyungdong B/D, 4 Sunae-ro 46 beon-gil, Bundang-gu,
Seongnam-si, Gyeonggi-do, Korea, 13595
Toll Free: +82-80-800-0585
Tel: +82-31-786-0585
Fax: +82-31-786-0583
Email: korea@adlinktech.com

ADLINK Technology is a Premier member of the Intel® Internet of Things Solutions Alliance. From modular components to market-ready systems, Intel and the 400+ global member companies of the Intel® Internet of Things Solutions Alliance provide scalable, interoperable solutions that accelerate deployment of intelligent devices and end-to-end analytics. Close collaboration with Intel and each other enables alliance members to innovate with the latest technologies, helping developers deliver first-in-market solutions. Learn more at: intel.com/iotsolutionsalliance.

ADLINK Technology (China) Co., Ltd.

上海市浦东新区张江高科技园区芳春路300号 (201203)
300 Fang Chun Rd., Zhangjiang Hi-Tech Park
Pudong New Area, Shanghai, 201203 China
Tel: +86-21-5132-8988
Fax: +86-21-5192-3588
Email: market@adlinktech.com

ADLINK Technology Beijing

北京市海淀区上地东路1号盈创动力大厦E座801室(100085)
Rm. 801, Power Creative E, No. 1 Shang Di East Rd.
Beijing, 100085 China
Tel: +86-10-5885-8666
Fax: +86-10-5885-8626
Email: market@adlinktech.com

ADLINK Technology Shenzhen

深圳市南山区科技园南区高新南七道数字技术园
A1栋2楼C区 (518057)
2F, C Block, Bldg. A1, Cyber-Tech Zone, Gao Xin Ave. Sec. 7
High-Tech Industrial Park S., Shenzhen, 518054 China
Tel: +86-755-2643-4858
Fax: +86-755-2664-6353
Email: market@adlinktech.com

ADLINK Technology GmbH

Mannheim
Hans-Thoma-Strasse 11, D-68163, Mannheim, Germany
Tel: +49 621 43214-0
Fax: +49 621 43214-30
Email: emea@adlinktech.com
Deggendorf
Ulrichsbergerstrasse 17, 94469 Deggendorf, Germany
Tel: +49 (0) 991 290 94 - 10
Fax: +49 (0) 991 290 94 - 29

**ADLINK Technology, Inc.
(French Liaison Office)**

6 allée de Londres, Immeuble Ceylan 91940 Les Ulis, France
Tel: +33 (0) 1 60 12 35 66
Fax: +33 (0) 1 60 12 35 66
Email: france@adlinktech.com

**ADLINK Technology, Inc.
(Israel Liaison Office)**

27 Maskit St., Corex Building PO Box 12777
Herzliya 4673300, Israel
Tel: +972-54-632-5251
Fax: +972-77-208-0230
Email: israel@adlinktech.com

**ADLINK Technology, Inc.
(UK Liaison Office)**

Tel: +44 774 010 59 65
Email: UK@adlinktech.com



IoT Solutions
Alliance
Premier



Provide Optimum Patient Care with
State of the Art Medical Solutions

Medical Solutions

Medical Panel Computers

Medical Monitors

Medical Tablets

Custom Designs



www.adlinktech.com

2016

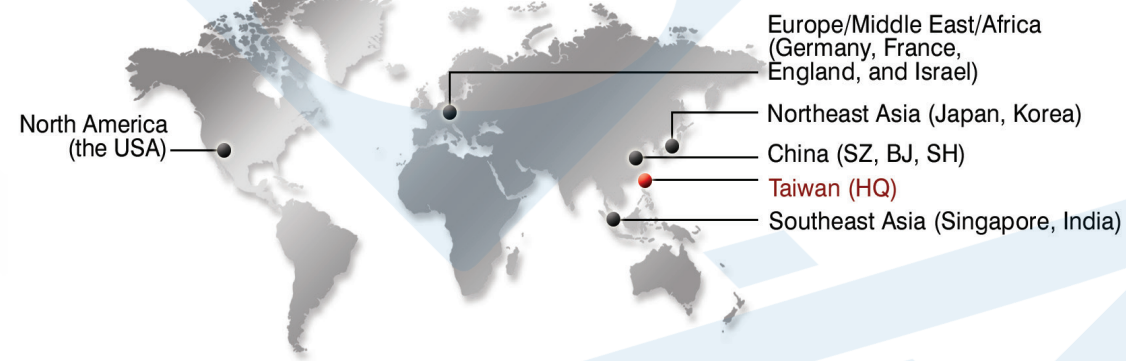


All products and company names listed are trademarks or trade names of their respective companies.
All specifications are subject to change without further notice.



Singel 3 | B-2550 Kontich | Belgium | Tel. +32 (0)3 458 30 33 | info@alcom.be | www.alcom.be
Rivium 1e straat 52 | 2909 LE Capelle aan den IJssel | The Netherlands | Tel. +31 (0)10 288 25 00 | info@alcom.nl | www.alcom.nl

A Global Company



ADLINK, a manufacturer of embedded computing technology, leads the field with integration of computing power, rugged design, high availability, and industrial I/O. Dedicated to test & measurement, industrial automation, defense and aerospace, gaming, communications, medical, and transportation applications, ADLINK has made a name for itself providing reliable products of superior quality for cost-effective solutions, allowing our customers around the world to significantly reduce time-to-market burdens while increasing their competitive edge.

By providing leading-edge application-ready platforms and industrial building blocks, ADLINK empowers our customers, allowing them to minimize total cost of ownership (TOC) with customization and system integration advantages, keeping manufacturing costs low and extending product lifecycles.

ADLINK is a Premier Member of the Intel® Internet of Things Solutions Alliance and is active in several standards organizations, including the PCI Industrial Computer Manufacturers Group (PICMG), the PXI Systems Alliance (PXISA), and the Standardization Group for Embedded Technologies (SGET).

ADLINK is a global company with headquarters in Taiwan; manufacturing in Taiwan and China; R&D and integration in Taiwan, China, the US, and Germany; and an extensive network of worldwide sales and support offices. ADLINK is ISO-9001, ISO-14001, ISO-13485 and TL9000 certified and is publicly traded on the TAIEX Taiwan Stock Exchange (stock code: 6166). ADLINK products are currently available in over 40 countries across 5 continents, supported by worldwide distribution networks and offices and over 1600 employees.



Delivering on Commitments to Products and Services

ADLINK maintains a dynamic role in embedded standards development, ultimately creating modular, standards-based technologies that provide the foundation for high-value medical platforms including medical panel computers, monitors and tablets. ADLINK's long-held support of COTS (commercial off-the-shelf) technologies and open systems enables flexible technologies and platforms that are scalable, flexible and reliable enough for extended deployment in diverse hospital and healthcare applications. End-users reduce risk and total cost of ownership with the ideal combination of high reliability and safety designed into a standards-based platform.

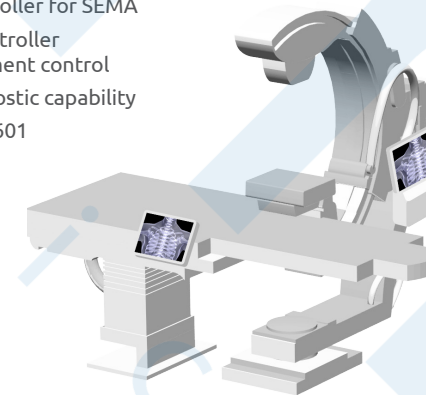


Custom Design Capabilities

Our expertise is in the design and production of customized solutions and the implementation of dedicated medical applications that your specific needs. In addition, we offer a wide range of design services, which an extension of our capabilities as a technology developer and producer. Customized hardware solutions meet the precise individual requirements of the end user. Short development cycles and fast transfer to production keeps time to market to a minimum.

Full-custom X-Ray C-Arm Control Panel

- All-in-one control panel
- BMC controller for SEMA
- Safety controller for movement control
- Self diagnostic capability
- UL/IEC-60601



Full-custom Diagnostic Ultrasound

- 21.5" Full-HD display, 10-point multi-touch P-CAP
- Wireless connectivity with 802.11 a/b/g/n/ac
- Battery powered, with 3-hour operating time
- Scalar IC firmware that allows gamma, color temperature and brightness calibration

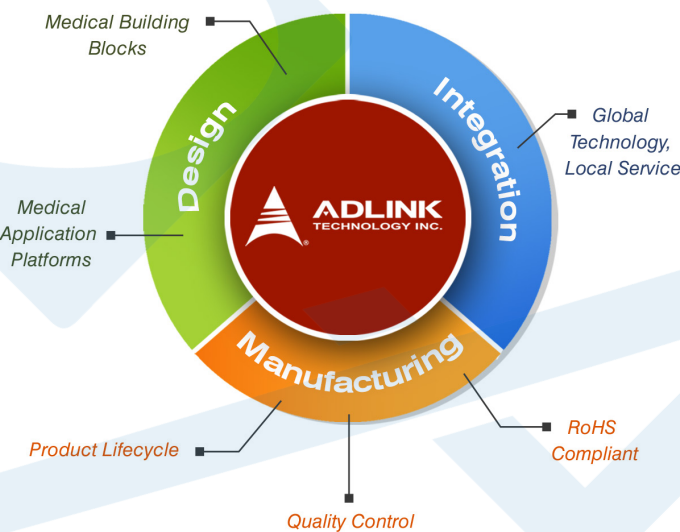


Design and Manufacturing Services

To fulfill your requirement of high quality, cost-effective products, with quick time to market in product development, ADLINK has established and assembled a Design and Manufacturing Services team to cater to the specific demands that off-the-shelf products could not meet.

From embedded building blocks and systems to related software packages, our DMS design team has the expertise to rapidly prototype upon the approval of finalized specifications. In addition, the winning of ISO-9001 certification ensures the exactitude of our research and development procedures with the highest product quality.

ADLINK owns and operates the manufacturing facilities in our Asia headquarters. Complete capabilities include our own PCB layout teams, SMT lines, system integration, and test capabilities. In short, ADLINK controls the whole manufacturing process, from layout and design to prototyping and volume production.



Customer Services

ADLINK is not only devoted to providing local service worldwide, but also to providing convenient online services. The following services are available around the clock on the Internet.

eRMA

ADLINK customers can send their RMA requests via our eRMA system. After obtaining an RMA number, you can track your RMA status online at any time.

Partner Center

The ADLINK Partner Center is specifically designed for worldwide sales and marketing support to allow our global sales representatives and distributors access to real-time product and marketing information and materials as soon as they are released at ADLINK headquarters. More than a resource database, the ADLINK Partner Center will also facilitate your business in serving customers.

Ask An Expert

This is the place to get help for ADLINK products. 'Ask an Expert' provides answers to commonly asked questions, or you can click on the 'Ask a Question' tab to contact ADLINK's knowledgeable staff about a specific product or issue. ADLINK AAE (Ask an Expert) is available 24/7 online and is staffed by dedicated professionals who are available to address customers' needs and answer questions. All issues and comments are recorded into a database and can be tracked/reviewed at any time. ADLINK customers are invited to access the AAE system at: <http://www.adlinktech.com/AAE>

Environmental Protection Policy

ADLINK implemented a Green Product Policy in May 2004 to align the purchasing and use of green products meeting requirements from international environmental protection statutes. Environmental protection is a top priority for the management at ADLINK. Measures have been taken to ensure that our products have little impact on the environment. In addition to planning a leadless process, the affect on the environment of components and raw materials will also be reduced. The Green Product concept has been built into our new product development system to ensure protection of the environment and continued business success.

RoHS Compliant Computing

ADLINK is committed to fulfill its social responsibility to global environmental preservation through compliance with the European Union's Restriction of Hazardous Substances (RoHS) directive, which restricts the use of harmful substances such as lead, mercury and cadmium in new equipment.

Most end-user applications in which ADLINK products are used do not require RoHS compliance. However, ADLINK will actively work with customers whose products are not RoHS exempt under category 8 or category 9 classifications. Our lead-free production line and process, including solder paste, solder bar and process control parameters, has been developed and standardized in our manufacturing system.

Conflict Free Minerals Policy

ADLINK will not knowingly procure material supplies and components that contain minerals that directly or indirectly finance or benefit armed groups in the Democratic Republic of Congo (DRC) or an adjoining country.

We urge our suppliers to support this policy in their own procurement guidelines and provide us with accurate country of origin information.

ADLINK shall:

- Comply fully with requests from EICC-GeSI.
- Conduct a reasonable country of origin inquiry to clarify the origins of the Gold, Tantalum, Tungsten and Tin used in our products.
- Establish reasonable objectives and targets with a goal of ascertaining and minimizing ADLINK's risk. With a goal of continuous improvement for our Conflict Free Minerals Program, develop a means to measure objectives and targets. ADLINK will also review, revise and report these measures, and overall program updates, on an annual basis.
- Empower all employees, suppliers, vendors and contractors to take ownership in complying with the Conflict Free Minerals Policy and to escalate risks in the supply chain to management's attention.
- Effectively communicate to all employees this Conflict Free Minerals Policy and our Conflict Free Minerals Program.

Management Flow

The management flow of ADLINK's Green Policy begins during the development stage of a product. Only parts and raw materials that meet RoHS requirements are sourced. Our engineers specifically design products using only qualified components. A lead-free process ensures that manufactured products are "green." Green products do not contain environmentally hazardous elements and can easily be recycled.

REACH Declaration

The Registration, Evaluation, Authorization and Restriction of Chemicals Regulation 1907/2006, commonly referred to as "REACH", is Europe's new chemicals legislation. The products that we supply are non-chemical products and under normal and reasonable use, they will not release harmful substance. Furthermore, we will immediately inform you in correspondence to REACH-Article 33 if any substance of content (as from a content of >0.1%) in our products will be classified alarming by the European Agency for Chemicals ECHA.

ADLINK's medical solutions

Healthcare organizations are now using modern technologies to enable digital healthcare to improve the quality and efficiency of their services. Digital healthcare emphasizes the provision of patient-centric medical services to deliver a superior patient experience, reduce operation costs, and enhance medical staff workflow. To facilitate digital applications in the medical environment, ADLINK has developed healthcare solutions including medical grade panel computers and tablets that support patient monitoring and patient data management in settings ranging from nursing to critical care. These solutions optimize clinical and operational effectiveness and are suited to various application scenarios including mobile rescue teams in ambulances, emergency rooms, hybrid operating rooms, and intensive care units (ICU).



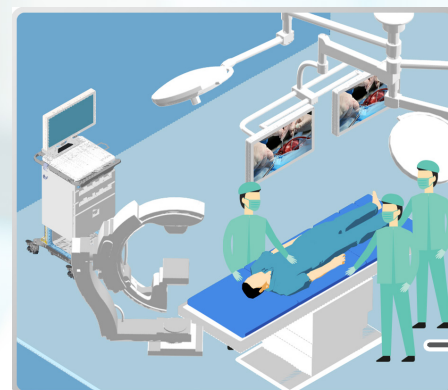
Operating Room

Customers Benefits:

- Superior image/video viewing capabilities
- Easy cleaning and maintenance with hygienic design
- Medical compliance and isolated I/O design for patient safety

Feature Product:

MLC 5-21/23 Medical Panel Computer



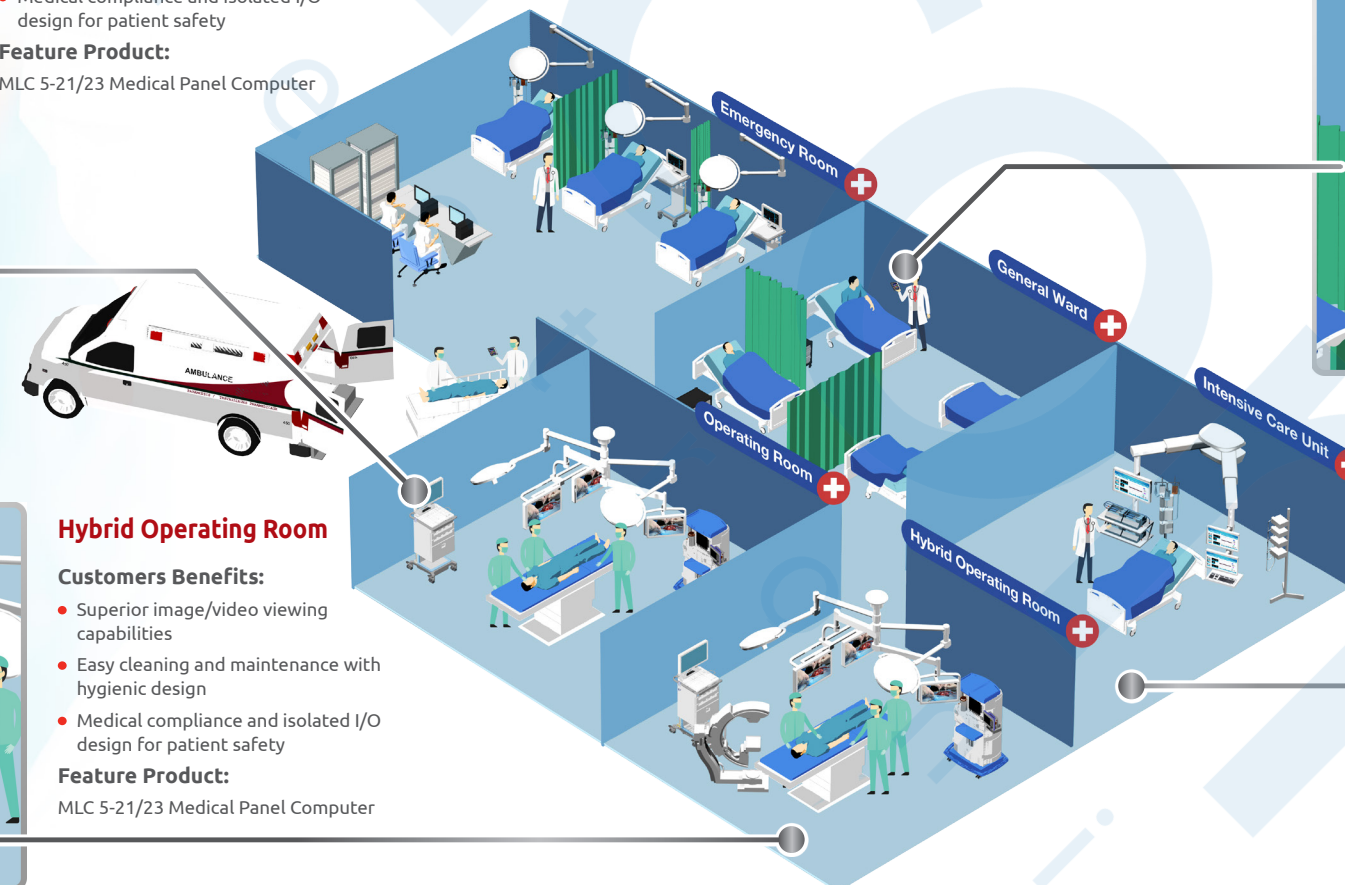
Hybrid Operating Room

Customers Benefits:

- Superior image/video viewing capabilities
- Easy cleaning and maintenance with hygienic design
- Medical compliance and isolated I/O design for patient safety

Feature Product:

MLC 5-21/23 Medical Panel Computer



General Ward

Customers Benefits:

- Increased patient safety by replacing handwritten documentation to reduce treatment errors
- Faster turnaround with easy access to clinical data

Feature Product:

IMT-BT Tablet



Intensive Care Unit

Customers Benefits:

- Easy to use function keys on the front panel for ICU staff
- Easy cleaning and maintenance with hygienic design
- Medical compliance and isolated I/O design for patient safety

Feature Product:

MLC 5-21/23 HE Medical Panel Computer

PENTA ADLINK – your dependable medical solution partner

Are you searching for a partner who can assist you in being the first to market with your next generation platform and manage the lifecycle of components used in your equipment? By leveraging PENTA's design methodology and manufacturing capabilities in the medical field, we provide a series of medical-grade computers, monitors and tablets that enable hospitals and clinical institutions to deliver the highest quality patient care in a wide range of healthcare environments. The key elements manifested in customers' requirements for looking for a partner are product components, technical version control, medical regulations and risk analysis. We are not only able to provide product solutions that meet these requirements, but are also able to support customers who want to integrate our medical product solutions into their own medical systems. Our skill and knowledge of the requirements and necessities for designing reliable medical hardware makes us a trustworthy partner in the challenging field of medical applications.



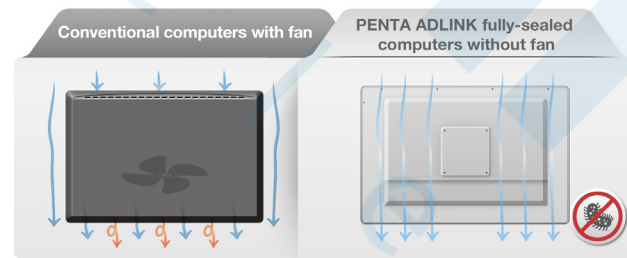


Medical panel computer for critical care

The MLC 5-21/23 HE medical panel computer is equipped with the 5th generation Intel® Core™ i7 processor, delivering outstanding computing performance to easily manage and integrate images, EHRs and other relevant patient data.

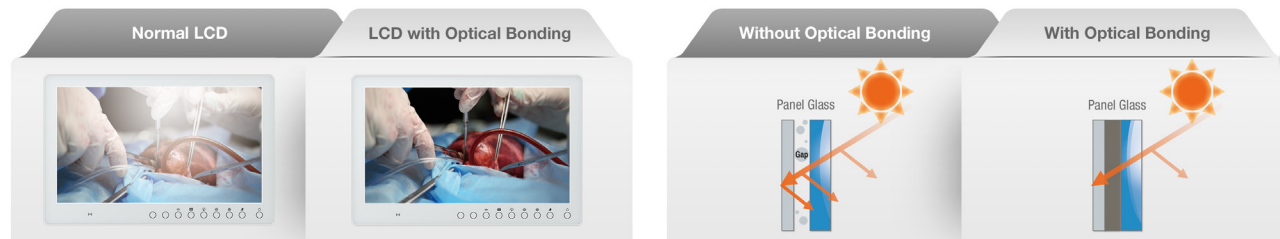
Convenient infection control and effective cleaning

The MLC 5-21/23 HE with fully-sealed and gap-free aluminum housing protects against dust and liquid intrusion in critical patient monitoring settings and the fanless design doesn't disturb the controlled laminar airflow in operating rooms and surgical intervention rooms. Our design allows the use of all common disinfectants and cleaning agents to prevent accumulation of microbes in order to maintain the hygienic conditions necessary in medical environments.



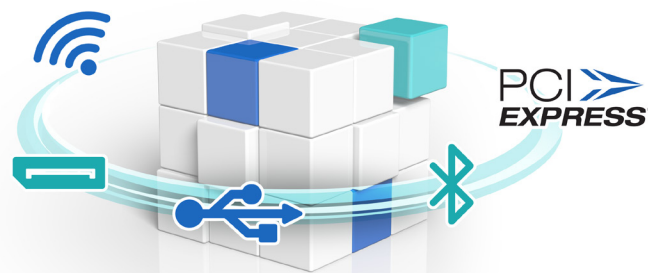
Superior viewing capabilities

The MLC 5-21/23 HE offers a 21.5" or 23.8" Full HD capacitive touchscreen with anti-glare coating and optical bonding for enhanced viewing capabilities. Optical bonding prevents condensation, reduces reflections for increased visibility, and improves the durability of the display.



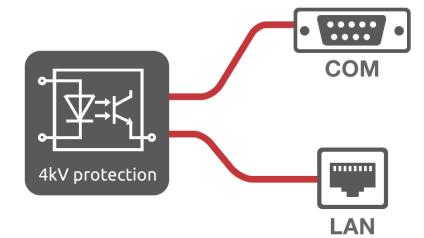
Advanced functionality and flexibility

MLC 5-21/23 HE medical computer is designed with rich I/O flexibility and includes two Ultra HD (3840x2160) DisplayPort outputs as standard equipment to support external monitors required by modern healthcare applications. Wireless connectivity via both Wi-Fi and Bluetooth are supported to enable operational flexibility and a PCIe x16 expansion slot is provided for custom expansion.



Increased safety design

The MLC 5-21/23 HE is also equipped with galvanically isolated COM ports and LAN ports to connect to medical devices for enhanced safety. As required for medical electrical equipment, it is designed with electromagnetic emission shielding according to all relevant standards, minimizing interference with other equipment, and is in full compliance with IEC/EN-60601-1 and IEC/EN-60601-1-2.



Fully-sealed housing with cable cover for effective cleaning

AC or DC power supply for different usages (optional battery for emergency power)

9 illuminated function keys on the front bezel including two customized options



Medical panel computer for clinical and nursing care

The MLC-101/121/156-BT medical panel computer has a fully-sealed housing and is equipped with the Intel® Celeron® Processor J1900. It has IP65 rated front bezel protection for easy infection control and comes in 10.1", 12.1", and 15.6" display sizes with anti-glare coating for optimum viewing capabilities. Versatile I/O interfaces include an isolated Gigabit Ethernet port for enhanced safety. The MLC-101/121/156-BT is suitable for clinical and nursing care monitoring of patients' physical parameters in various clinical environments.



Medical tablet for streamlined patient care

IMT-BT medical tablets are designed to allow healthcare professionals to easily access electronic health records (EHRs) in order to check patient history, diagnosis, treatment and medications. Our latest medical tablet is equipped with the Intel® Celeron® Processor N2807 and has a rugged design to withstand repeated sanitization and provide better infection control. With an optional vehicle dock, our medical tablets can be installed in ambulances to let emergency staff conveniently access vital patient data while en route to the hospital, allowing them to provide timely emergency care.

Sunlight readable with 600 nits for easy viewing in direct sunlight

Multiple operating systems

1.5m drop resistance (with optional projective rubber housing) and IP65 rating for the reliability in the workplace

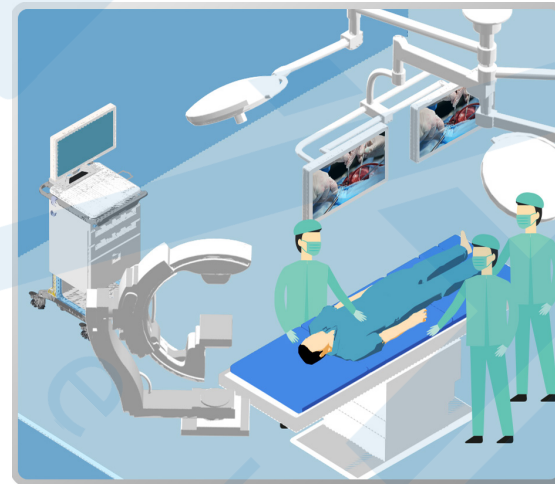
WLAN and optional WWAN for connectivity in any workplace



Application Stories

Patient Data Management and Integration in the OR

The MLC 5-21/23 medical panel computer is designed for use as a control platform in operating rooms or hybrid operating rooms and to provide easy access to PACS images, EHR and other relevant patient data. The MLC 5-21/23 allows surgeons and nurses to monitor the patient's vital parameters and other critical information during surgery, and lets them conveniently view scans and surgical images or manage video routing and switching. The MLC 5-21/23 is medically compliant and designed for effective infection control, making it ideal for use in critical OR environments to simplify surgical patient data monitoring and management.

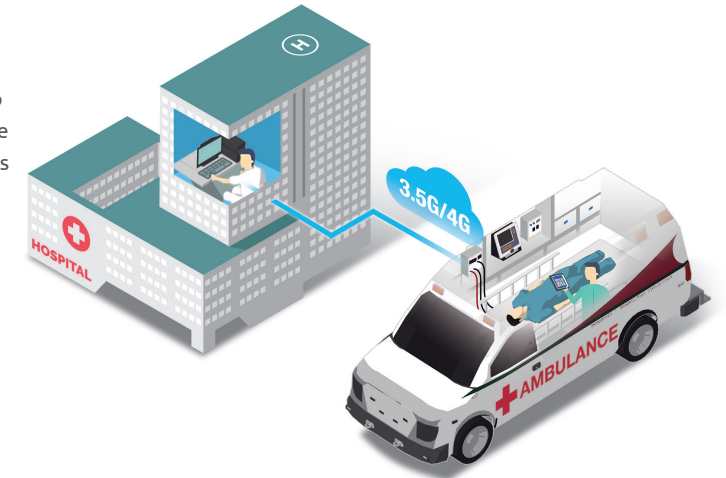


Why MLC 5-21/23?

- Medical compliance and isolated I/O design for patient safety
- Full HD viewing capabilities for surgical images and video
- Easy cleaning and maintenance with hygienic design

Patient Care in the Ambulance

The IMT-BT medical tablet is designed to meet the needs of the in-vehicle ambulance environment, with its rugged specifications and vehicle dock to secure the tablet and keep it fully charged. The IMT-BT medical tablet can be used by the emergency response team to monitor the patient's vital signs and immediately upload the data so that hospital staff have the critical information on hand when the patient arrives. In addition, with its wireless capabilities and built-in camera, doctors at the hospital can consult with emergency medical technicians (EMT) or ambulance crew members in the ambulance and advise on initial treatment while the patient is still en route to the hospital.



Why IMT-BT?

- Easy disinfection with IP65 ingress protection
- High speed wireless connection for real-time patient information
- Durable and rugged design with vehicle docking

Patient Care in ICU



The MLC 5-21/23 HE is designed for use in intensive care units to allow staff to monitor infusion pump status and history, supervise patient physical status, file clinical records and integrate them into other intensive care systems. User-friendly function keys on the front panel allow ICU nurses to easily adjust display brightness settings, disable the touch function for easy cleaning, and facilitate patient data management, even in dark environments.

Why MLC 5-21/23 HE?

- Medical compliance and isolated I/O design for patient safety
- Easy to use function keys on the front bezel
- Easy cleaning and maintenance with hygienic design

Vital Signs Measurement and Monitoring



The MLC-101/121/156-BT medical panel computer is designed for use in monitoring patient vital signs, is medically compliant, and has an isolated I/O design. It can be easily integrated with mobile workstations to facilitate rapid information delivery in clinical settings. Real-time patient vital sign data such as blood pressure and blood glucose levels can be automatically transmitted to the hospital information system. This allows caregivers to monitor patient status remotely, resulting in enhanced hospital workflow efficiency.

Why MLC-101/121/156-BT?

- Medical compliance and isolated I/O design for patient safety
- PCAP touch screen for easy patient data input and management
- Easy cleaning and maintenance with hygienic design

Product Specifications



Model Name	MLC 5-21/23	MLC 5-21/23 HE	MLM 5-21/23	
Description	21.5" or 23.8" medical panel computer	21.5" or 23.8" medical panel computer with function keys	21.5" or 23.8" Medical Monitor	
Computing System	CPU	Quad-core Intel® Core™ i7- 5700EQ	-	
	Chipset	Intel® QM87	-	
	Graphics	Intel® HD Graphics 5600	-	
	Memory	Up to 16 GB DDR3L 1600MHz	-	
Display Characteristics	Size	21.5"/23.8"	21.5" / 23.8"	
	Resolution	1920x1080	1920 x 1080	
	Max. Colors	16.7 million colors	16.7 million colors	
	Viewing Angle	21.5":176°/176° ; 23.8": 178°/178°	21.5":176°/176° ; 23.8": 178°/178°	21.5":176°/176° ; 23.8": 178°/178°
Expansion Slot	PCIe	1x PCIe x16	-	
	SSD	128GB	-	
Storage	HDD	500GB (optional)	-	
	Serial Port	2x RS-232, 4kV isolated (up to 4x optional)	2x RS-232, 4kV isolated (up to 4x optional)	-
I/O Ports	USB Port	2x USB 2.0 (4kV isolated optional) ; 2x USB 3.0	2x USB 2.0 (4kV isolated optional) ; 2x USB 3.0	1x USB Type B (Input port)
	HDMI	-	-	-
	VGA/DVI Port	-	-	1x VGA, 1x DVI-D
	Display Port	2x DisplayPort, max. res. 3840x2160	2x DisplayPort, max. res. 3840x2160	1x DisplayPort
	LAN	2x GbE, 4kV isolated	2x GbE, 4kV isolated	-
	Audio	Line-out / Mic-in	Line-out / Mic-in	-
User Interfaces		User Interface 9 illuminated keys on the front bezel; available functions: - Standby On/Off - Touch cleaning enable/disable - Panel brightness increase - Panel brightness decrease - Display backlight On/Off - Display keyboard On/Off - Reading light for keyboard illumination On/Off (dimnable) - 2x additional function (customizable)	6 key membrane keypad; available functions: - Standby ON/OFF - Call OSD menu (enables further adjustments) - Search / select display signal type - Display signal type - Display auto adjust - Touch cleaning enable/disable	
		User Interface 5-key membrane keypad; available functions: - Standby ON/OFF - Panel brightness increase - Panel brightness decrease - Touch cleaning enable/disable - Call additional function (customizable)	User Interface 5-key membrane keypad; available functions: - Standby ON/OFF - Panel brightness increase - Panel brightness decrease - Touch cleaning enable/disable - Call additional function (customizable)	
Power	100-240 V ~ 50 / 60 Hz or 24 V	100-240 V ~ 50 / 60 Hz or 24 V	100-240 V ~ 50 / 60 Hz or 24 V	
Environmental	Operating	0°C to +35°C / 10% to 90% rel. humidity (non-condensing)	0°C to +35°C / 10% to 90% rel. humidity (non-condensing)	0°C to +35°C / 10% to 90% rel. humidity (non-condensing)
	Storage	-10°C to +60°C / 5% to 95% rel. humidity (non-condensing)	-10°C to +60°C / 5% to 95% rel. humidity (non-condensing)	-10°C to +60°C / 5% to 95% rel. humidity (non-condensing)
	Ingress Rating	IP65 protection from 5-sides (6 sides with cable cover attached)	IP65 protection from 5-sides (6 sides with cable cover attached)	IP65 protection from 5-sides (6 sides with cable cover attached)
Mechanical	Dimensions (WxHxD)	21.5":532x346x83 mm / 23.8":583x374x83 mm	21.5": 532x346x83 mm / 23.8":583x374x83 mm	21.5": 532x346x83 mm / 23.8": 583x352x83 mm
	Weight	21.5":9.5 kg / 23.8":10.8 kg	21.5":9.5 kg / 23.8":10.8 kg	21.5":8.5 kg / 23.8":10.6 kg
	Housing	Aluminium powder coated	Aluminium powder coated	Aluminium powder coated
	Mounting	VESA 100	VESA 100	VESA 100
Certificates		IEC 60601-1:2012 EN 60601-1:2006/A11:2011 IEC 60601-1-2:2007/EN 60601-1-2:2007 EN 55022:2010 + AC:2011 EN 61000-3-2:2006 + A1:2009 + A2:2009 EN 61000-3-3:2013 EN 55024:2010 RoHS compliant	IEC 60601-1:2012 EN 60601-1:2006/A11:2011 IEC 60601-1-2:2007/EN 60601-1-2:2007 EN 55022:2010 + AC:2011 EN 61000-3-2:2006 + A1:2009 + A2:2009 EN 61000-3-3:2013 EN 55024:2010 RoHS compliant	IEC 60601-1:2012 EN 60601-1:2006/A11:2011 IEC 60601-1-2:2007/EN 60601-1-2:2007 EN 55022:2010 + AC:2011 EN 61000-3-2:2006 + A1:2009 + A2:2009 EN 61000-3-3:2013 EN 55024:2010

Model Name	MLC-101/121/156-BT	
Description	10.1"/12.1"/15.6" medical panel computer	
Computing System	CPU	Intel® Celeron® Processor J1900
	Chipset	Intel® Atom SoC integrated
	Graphics	Intel® HD Graphics
	Memory	Up to 4GB DDR3L 1600MHz
Display Characteristics	Size	10.1"/12.1"/15.6"
	Resolution	10.1"/12.1":1280 x 800 ; 15.6": 1366 x 768
	Max. Colors	16.7 million colors
	Viewing Angle	10.1"/15.6":170°/170° ; 12.1":176°/176°
Expansion Slot	PCIe	1 x Full-size Mini PCIe
	SSD	miniPCIe to support mSATA with 32GB SSD
Storage	HDD	-
	USB Port	1 x USB 3.0 ; 2 x USB 2.0
I/O Ports	LAN	1x GbE, isolated 2KV
	Power	100 - 240 V ~
Environmental	Operating	0°C to +40°C, 10% to 90% rel. humidity (non-condensing)
	Storage	-10°C to +60°C, 5% to 95% rel. humidity (non-condensing)
	Ingress Rating	IP65 (Front Panel), IP21(Entire System)
Mechanical	Dimensions (WxHxD)	15.6": 393.3x248.3x75.6 mm / 12.1": 312.4x 214.5x59 mm / 10": 267x183.6x54.5 mm
	Weight	15.6": 5.9 kg / 12.1": 4.2 kg / 10.1": 3.1kg
	Housing	
Mounting	VESA 100/75	
Certificates		IEC 60601-1:2005+A1:2012(Ed. 3.1) ANSI/AAMI ES60601-1(2005) + AMD (2012) and CAN/CSA-C22.2 No.60601-1 (2008)+(2014) (Ed. 3.1) IEC 60601-1-2:2007/EN 60601-1-2:2007 IEC 60950-1:2005+A1:2009+A2:2013 RoHS compliant FCC Class B

Model Name	IMT-BT	
Description	10.1" Medical Tablet	
Computing System	CPU	Dual-core Intel® Celeron® Processor N2807 SoC
	Memory	4GB DDR3
	Size	10.1"
Display Characteristics	Resolution	1280x800
	Luminance (cd/m²)	600
Storage	SSD	miniPCIe to support mSATA with 32GB SSD
Communications		WLAN: IEEE 802.11 a/b/g/n/ac WPAN: Bluetooth 4.0 WWAN (optional): 3.5G HSPA+, 4G LTE
Audio		2W speaker x1 ; Microphone x1; Headset Stereo earphone jack x1
I/O ports		USB 3.0/2.0 x1 ; HDMI x1
Connectivity	Camera	2MP camera on front, 5MP on rear (with flash)
	RFID	HF 13.56MHz, NFC 18092, 14443A/B, 15693
Control button		Power Button x 1 ; Programmable buttons x4
Battery		7.4V/6300 mAh Li-ion
Environmental	Operating	0°C to 40°C
	Storage	-20°C to 60°C
	Ingress Rating	IP65
Mechanical	Drop resistance	1.5m (with optional protective rubber housing)
	Dimensions (WxHxD)	291 x 198 x 23 mm
Weight		1.2 kg
Certificates		CE, FCC, EN 60601-1
Optional accessories		Protective rubebr housing, Office dock, Vehicle dock