



# LED DRIVER PRODUCT CATALOGUE

2020 V1.0

Technology Innovation and Product Supremacy

## ABOUT MOSO

Shenzhen MOSO Electronics Technology Co., Ltd. is a subsidiary of the MOSO Power Supply Technology Co., Ltd. A national hi-tech and energy-saving enterprise encouraged by the National twelfth five-year Plan. Meanwhile, it is a professional power supply manufacturer with much influence nationwide. After several years of development ever since 2009 when it was established, the company has been recognized by many fortune-500 enterprises in the world and become their strategic partner.

Taking technology and quality as its core advantages, MOSO Electronics Technology has carried out its industry university research cooperation with many key domestic universities and colleges by building the MOSO Electronics Technology Research Institute with huge amounts of funds for R&D invested. At the same time, the institute is facilitated with the reliability and security laboratory that leads the industry with the application of cutting-edge equipments for production and testing including the full-automatic computer tester, with which the laboratory has developed its world-leading high-efficient switching power supply and LED intelligent drivers of many categories. MOSO Electronics Technology has acquired about 200 national patents within just a few years.

Integrating the R&D, manufacturing and sale of products together with services, MOSO Electronics Technology has settled its branch offices in countries and regions including the US, Japan, Korea, Singapore, Europe, Hong Kong and Taiwan, to provide promptly its professional services for clients both in domestic and abroad. Out-standing talents, cutting-edge technologies, scientific management and forward-looking entrepreneurship-all of which has enabled MOSO Electronics Technology to stand on a leading position of the industry and become its core competitiveness. It is the vision of the company to proceed hand in hand with clients and traders of all trades and achieve mutually beneficial development by making our modest contributions to the global undertaking of energy saving and reduce carbon.

### Headquarter



### Manufacturing Center



# content

## Outdoor Lighting Solution

X6 Series	04
U6 Series	07
LDP Series	08
LUP Series	10
XCP Series	12
LCP Series	14
LHP Series	16
EHC Series	18
PHC Series	20
XUP LUC Series	21
MNC Series	22

## Industrial Lighting Solution

MEP Series	23
MTP Series	24
G6 Series	26
MTN Series	28
RTN Series	29

## Landscape Lighting Solution

MSV Series	30
LDV Series	31
LSV Series	32

## Intelligent Lighting Solution

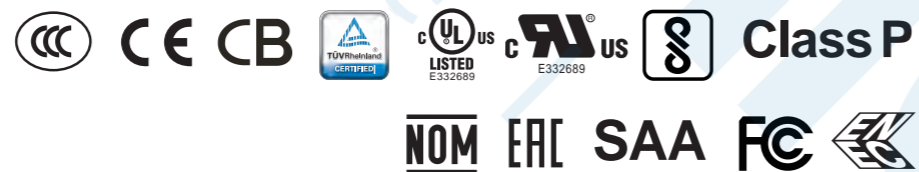
DALI Series	34
-------------	----

External Surge Protection Device	36
----------------------------------	----

Remarks:

All pictures, spec, dimension in this catalog are just for your references, any further requirements, please contact our sales.

# Offline programmable LED Driver



## Features

- ▶ Universal input voltage range: 90~305Vac;
- ▶ Constant power design;
- ▶ Offline programmable;
- ▶ 0-10V, PWM, Timer dimming. Dim-to-off;
- ▶ Output lumen compensation;
- ▶ Output and dimming signal isolating;
- ▶ Surge protection: DM 5KV, CM 10KV;
- ▶ Protections: SCP, OVP, OTP;
- ▶ IP67 design for indoor and outdoor applications;
- ▶ Suitable for dry / damp / wet locations;
- ▶ 5 Years warranty.

## 26~60W

- ▶ Constant current design;
- ▶ 1-10V/PWM dimming;
- ▶ Surge protection: 4KV line-line, 6KV line-earth;
- ▶ Protections: SCP, OVP(input), OVP(output).

## Application

- ▶ LED street lighting, industrial lighting, and landscape lighting.

## Product Selection Guide

Model	Power (W)	Output voltage (Vdc)	Full power current range (A)	Default output spec	Typ. Eff.	Typ. PF	Dimensions (L*W*H)mm
X6-026Y075	26	37~74	0.35	0.35A	87.5%	0.96	102*64*33
X6-026Y052	26	26~52	0.50	0.50A	87.5%	0.96	102*64*33
X6-026Y043	26	22~43	0.60	0.60A	87.5%	0.96	102*64*33
X6-026Y037	26	20~37	0.70	0.70A	87.0%	0.96	102*64*33
X6-030Y075	30	37~75	0.40	0.4A	87.5%	0.96	102*64*33
X6-030Y060	30	29~60	0.50	0.50A	86.5%	0.96	102*64*33
X6-030Y043	30	20~43	0.70	0.70A	86.5%	0.96	102*64*33
X6-035Y064	35	32~64	0.55	0.55A	88.0%	0.96	107*64*33
X6-035Y050	35	25~50	0.70	0.70A	88.0%	0.96	107*64*33
X6-035Y041	35	20~41	0.86	0.86A	88.0%	0.96	107*64*33
X6-035Y033	35	18~33	1.05	1.05A	87.5%	0.96	107*64*33
X6-042Y084	42	42~84	0.50	0.50A	89.0%	0.96	107*64*33
X6-042Y060	42	30~60	0.70	0.70A	89.0%	0.96	107*64*33
X6-042Y049	42	25~49	0.86	0.86A	89.0%	0.96	107*64*33
X6-042Y040	42	21~40	1.05	1.05A	89.0%	0.96	107*64*33
X6-060Y120	60	60~120	0.50	0.50A	89.0%	0.96	107*64*33
X6-060Y086	60	48~86	0.70	0.70A	89.0%	0.96	107*64*33
X6-060Y070	60	35~70	0.86	0.86	88.0%	0.96	107*64*33
X6-060Y057	60	34~57	1.05	1.05A	89.0%	0.96	107*64*33
X6-060Y050	60	25~50	1.20	1.20A	88.0%	0.96	107*64*33
X6-060Y043	60	21~43	1.40	1.40A	88.0%	0.96	107*64*33
X6-060Y034	60	20~34	1.80	1.80A	88.0%	0.96	107*64*33
X6-075Y041	75	20~41	1.83~2.67	20~36V/2.10A	88.0%	0.96	128.6*68*37
X6-075Y062	75	38~62	1.21~1.88	38~53V/1.40A	89.0%	0.96	128.6*68*37
X6-075Y108	75	54~108	0.70~1.05	54~108V/0.70A	90.0%	0.96	128.6*68*37
X6-105Y041	105	20~41	2.56~3.50	20~37V/2.80A	90.0%	0.97	153.6*68*37

Note: Y=M, Programmable output with 0~10V/PWM/Timer dimming; <60W 1-10V/PWM dimming, constant current output; Y=V, Output current adjustable through built-in potentiometer.

Model	Power (W)	Output voltage (Vdc)	Full power current range (A)	Default output spec	Typ. Eff.	Typ. PF	Dimensions (L*W*H)mm
X6-105Y062	105	38~62	1.69~2.50	38~50V/2.10A	91.00%	0.97	153.6*68*37
X6-105Y100	105	50~100	1.05~1.40	50~75V/1.40A	91.00%	0.97	153.6*68*37
X6-105Y150	105	75~150	0.70~1.05	75~100V/1.05A	92.00%	0.97	153.6*68*37
X6-150Y041	150	20~41	3.66~5.40	20~35V/4.20A	91.00%	0.97	173.6*68*37
X6-150Y062	150	38~62	2.42~3.60	38~47V/3.15A	91.00%	0.97	173.6*68*37
X6-150Y108	150	54~108	1.40~2.10	54~71V/2.10A	91.00%	0.97	173.6*68*37
X6-150Y143	150	80~143	1.05~1.50	80~143V/1.05A	92.00%	0.97	173.6*68*37
X6-150Y214	150	107~214	0.70~1.05	107~214V/0.70A	92.00%	0.97	173.6*68*37
X6-200Y041	200	20~41	4.88~6.67	20~36V/5.56A	92.00%	0.97	193.6*68*39
X6-200Y062	200	38~62	3.23~5.00	38~41V/4.90A	92.00%	0.97	193.6*68*39
X6-200Y096	200	48~96	2.10~3.00	48~71V/2.80A	92.50%	0.97	193.6*68*39
X6-200Y143	200	70~143	1.40~2.10	70~143V/1.40A	93.00%	0.97	193.6*68*39
X6-200Y191	200	96~191	1.05~1.40	96~190V/1.05A	93.00%	0.97	193.6*68*39
X6-200Y286	200	143~286	0.70~1.05	143~286V/0.70A	93.50%	0.97	193.6*68*39
X6-240Y041	240	20~41	5.86~7.50	20~35V/6.70A	92.00%	0.97	208.6*68*39
X6-240Y062	240	38~62	3.88~5.71	38~48V/5.00A	93.00%	0.97	208.6*68*39
X6-240Y086	240	43~86	2.8~4.20	43~57V/4.20A	92.50%	0.97	208.6*68*39
X6-240Y171	240	85~171	1.40~2.10	85~171V/1.40A	93.50%	0.97	208.6*68*39
X6-240Y229	240	114~229	1.05~1.50	114~228V/1.05A	93.50%	0.97	208.6*68*39
X6-240Y343	240	171~343	0.70~1.05	171~343V/0.70A	93.50%	0.97	208.6*68*39
X6-320Y041	320	20~41	7.80~10.00	20~36V/8.90A	92.00%	0.97	232*98*42
X6-320Y062	320	38~62	5.20~7.50	38~47V/6.70A	93.00%	0.97	232*98*42
X6-320Y143	320	72~143	2.24~3.20	72~114V/2.80A	93.00%	0.97	232*98*42
X6-320Y230	320	115~230	1.39~2.10	115~152V/2.10A	92.50%	0.97	232*98*42
X6-320Y457	320	228~457	0.70~1.10	228~304V/1.05A	93.00%	0.97	232*98*42
X6-600Y054	600	27~54	11.2~12.5	27~53V/11.20A	94.00%	0.97	276*125*39
X6-600Y428	600	240~428	1.40~1.75	240~428V/1.40	94.00%	0.97	276*125*39

Note: Y=M, Programmable output with 0~10V/PWM/Timer dimming; <60W 1-10V/PWM dimming, constant current output; Y=V, Output current adjustable through built-in potentiometer.



# U6 Series NFC Programmable LED Driver

## Features

- ▶ Input voltage range: 176~264Vac;
- ▶ Constant power design;
- ▶ NFC programmable;
- ▶ External NTC;
- ▶ DALI-2 & Timer dimming, Dim to off;
- ▶ Output lumen compensation;
- ▶ End-of-life indicator;
- ▶ Suitable for Class I and Class II luminaires;
- ▶ Auxiliary power supply: 24V/250mA;
- ▶ Surge protection: 6KV DM, CM 10KV;
- ▶ Multiple protection: SCP, OVP, OTP;
- ▶ Complies with zhaga interface specification book 13;
- ▶ Degrees of protection: IP20;
- ▶ 7 Years warranty.

## Application

- ▶ LED street lighting.

## Product Selection Guide

Model	Power (W)	Output voltage range (V)	Full power current range (A)	Default output current (A)	Typ. Eff.	Typ. PF	Dimensions (L*W*H)mm
U6-040D057	40	21~57	0.70~1.05	0.70	87%	0.97	123*79*31
U6-080D115	80	35~115	0.70~1.05	0.70	93%	0.98	132.5*77*40
U6-120D172	120	75~172	0.70~1.05	0.70	93%	0.98	132.5*77*40
U6-165D236	165	115~236	0.70~1.05	0.70	94%	0.98	170*100*40
U6-200D286	200	143~286	0.70~1.05	0.70	94%	0.98	170*100*40



# IR Programmable LED Driver

## Features



- ▶ Universal input voltage: 90 ~ 305Vac;
- ▶ Constant power design, outputs programmable;
- ▶ Equipped with interactive visual software to customize output setting;
- ▶ 3 in 1 dimming mode: 0-10V, PWM, Timer control;
- ▶ Can be with virtual midnight, output lumen compensation;
- ▶ Multiple protection: SCP, OVP, OTP;
- ▶ Surge protection: DM 5KV, CM 10KV;
- ▶ Degrees of protection: IP67;
- ▶ 5 Years warranty.

## Application

- ▶ LED street lighting, industrial lighting, and landscape lighting.

## Product Selection Guide

Model	Power (W)	Output voltage range (Vdc)	Output current adjustable range (A)	Full power current adjustable range (A)	Default output spec	Typ. Eff.	Typ. PF	Dimensions (L*W*H)mm
LDP-042X045 *	42	24 ~ 45	0.28 ~ 1.40	0.93 ~ 1.40	24 ~ 35V/1.2A	86%	0.96	169*64*39
LDP-042X080	42	45 ~ 80	0.19 ~ 0.93	0.53 ~ 0.93	45 ~ 60V/0.70	86%	0.96	169*64*39
LDP-042X140	42	80 ~ 140	0.11 ~ 0.53	0.30 ~ 0.53	80 ~ 120V/0.35	87%	0.96	169*64*39
LDP-060X045	60	24 ~ 45	0.36 ~ 1.80	1.33 ~ 1.80	24 ~ 36V/1.67A	86%	0.95	169*64*39
LDP-060X080	60	45 ~ 80	0.21 ~ 1.05	0.75 ~ 1.05	45 ~ 57V/1.05A	87%	0.95	169*64*39
LDP-060X086	60	40 ~ 86	0.28 ~ 1.40	0.70 ~ 1.40	40 ~ 50V/1.20A	87%	0.95	169*64*39
LDP-060X180	60	80 ~ 180	0.14 ~ 0.70	0.33 ~ 0.70	80 ~ 86V/0.70A	87%	0.95	169*64*39
LDP-075X032H	75	20 ~ 32	0.24 ~ 2.40	2.4	20 ~ 32V/2.40A	87%	0.95	164*68*39
LDP-075X054H	75	20 ~ 54	0.21 ~ 2.10	1.40 ~ 2.10	20 ~ 36V/2.10A	87%	0.95	164*68*39
LDP-075X062H	75	35 ~ 62	0.17 ~ 1.67	1.20 ~ 1.67	35 ~ 62V/1.05A	87%	0.95	164*68*39
LDP-075X141H	75	60 ~ 141	0.11 ~ 1.10	0.53 ~ 1.10	60 ~ 107V/0.70A	88%	0.96	164*68*39
LDP-075X270H	75	120 ~ 270	0.05 ~ 0.53	0.28 ~ 0.53	120 ~ 214V/0.35A	88%	0.96	164*68*39
LDP-105X032	105	20 ~ 32	0.33 ~ 3.30	3.3	20 ~ 32V/3.30A	90%	0.96	178*68*39
LDP-105X062	105	20 ~ 62	0.30 ~ 3.00	1.69 ~ 3.00	20 ~ 36V/2.91A	90%	0.96	178*68*39
LDP-105X150	105	60 ~ 150	0.14 ~ 1.40	0.7 ~ 1.40	60 ~ 75V/1.40A	91%	0.96	178*68*39
LDP-105X305	105	120 ~ 305	0.10 ~ 0.86	0.344 ~ 0.86	120 ~ 150V/0.70A	91%	0.96	178*68*39
LDP-120X062	120	20 ~ 62	0.30 ~ 3.00	1.93 ~ 3.00	20 ~ 45V/2.67A	91%	0.96	178*68*39
LDP-120X170	120	60 ~ 170	0.14 ~ 1.40	0.70 ~ 1.40	60 ~ 114V/1.05A	92%	0.96	178*68*39
LDP-120X305	120	120 ~ 305	0.07 ~ 0.70	0.395 ~ 0.70	120 ~ 171V/0.70A	91%	0.96	178*68*39
LDP-150X030	150	20 ~ 30	0.49 ~ 4.90	4.9	20 ~ 30V/4.90A	90%	0.96	207*68*39
LDP-150X054	150	20 ~ 54	0.42 ~ 4.20	2.8 ~ 4.20	20 ~ 36V/4.20A	90%	0.96	207*68*39
LDP-150X120	150	60 ~ 120	0.21 ~ 2.10	1.25 ~ 2.10	60 ~ 107V/1.40A	91%	0.96	207*68*39
LDP-150X214	150	80 ~ 214	0.11 ~ 1.10	0.94 ~ 1.10	80 ~ 143V/1.05A	91%	0.96	207*68*39
LDP-150X335	150	176 ~ 335	0.07 ~ 0.70	0.45 ~ 0.70	176 ~ 214V/0.70A	92%	0.96	207*68*39
LDP-200X054	200	20 ~ 54	0.63 ~ 6.30	3.70 ~ 6.30	20 ~ 36V/5.55A	90%	0.96	207*80*40
LDP-200X120	200	60 ~ 120	0.28 ~ 2.80	1.67 ~ 2.80	60 ~ 72V/2.80A	91%	0.96	207*80*40
LDP-200X305	200	120 ~ 305	0.14 ~ 1.40	0.65 ~ 1.40	120 ~ 143V/1.40A	91%	0.96	207*80*40
LDP-200X445	200	230 ~ 445	0.07 ~ 0.70	0.45 ~ 0.70	230 ~ 286V/0.70A	91%	0.96	207*80*40
LDP-240X041	240	20 ~ 41	0.75 ~ 7.50	5.86 ~ 7.50	20 ~ 36V/6.70A	92%	0.96	247*68*43.5
LDP-240X062	240	20 ~ 62	0.52 ~ 5.20	3.87 ~ 5.20	20 ~ 48V/5.0A	92%	0.96	247*68*43.5
LDP-240X180	240	80 ~ 180	0.21 ~ 2.10	1.33 ~ 2.10	80 ~ 170V/1.40A	92%	0.96	247*68*43.5
LDP-240X368	240	190 ~ 368	0.11 ~ 1.10	0.65 ~ 1.10	190 ~ 228V/1.05A	93%	0.96	247*68*43.5
LDP-320X041	320	20 ~ 41	1.0 ~ 10.0	7.8 ~ 10.0	20 ~ 36V/8.90A	92%	0.96	234*98*40
LDP-320X062	320	20 ~ 62	0.82 ~ 8.20	5.16 ~ 8.20	20 ~ 48V/6.70A	92%	0.96	234*98*40
LDP-320X230	320	120 ~ 230	0.21 ~ 2.10	1.39 ~ 2.10	120 ~ 228V/1.40A	93%	0.96	234*98*40
LDP-320X457	320	235 ~ 457	0.11 ~ 1.10	0.7 ~ 1.10	230 ~ 457V/0.70A	93%	0.96	234*98*40

Note: 1. X=M, Programmable output with 0 ~ 10V/PWM/Timer dimming; X=R, Programmable output with timer dimming;  
 2. LDP-075X032H, LDP-105X032, LDP-150X030 only CCC certification.

# Programmable LED Driver with Dim-to-off



## Features

- ▶ Universal input voltage: 90 ~ 305Vac;
- ▶ Constant power design, outputs programmable;
- ▶ Built-in 3-in-1 dimming and auto-react: 0-10Vdc, PWM, Timer dimming, dim-to-off;
- ▶ Can be with virtual midnight, output lumen compensation;
- ▶ Equipped with interactive visual software to customize output setting;
- ▶ DALI control is optional;
- ▶ 12V/0.3A auxiliary power supply is optional;
- ▶ Output is isolated with dimming signal;
- ▶ Stand-by power consumption <0.5W;
- ▶ Multiple protection: SCP / OVP/OTP;
- ▶ Surge protection: DM 5KV, CM 10KV;
- ▶ Degrees of protection: IP67;
- ▶ 5 Years warranty.

## Application

- ▶ LED street lighting, industrial lighting, and landscape lighting.

## Product Selection Guide

Model	Power (W)	Output voltage range (Vdc)	Output current adjustable range (A)	Full power current adjustable range (A)	Default output spec	Typ. Eff.	Typ. PF	Dimensions (L*W*H)mm
LUP-075X041Y *	75	20 ~ 41	0.27 ~ 2.68	1.83 ~ 2.68	20 ~ 36V/2.10A	87%	0.95	178*68*43.5
LUP-075X062Y	75	20 ~ 62	0.19 ~ 1.88	1.21 ~ 1.88	20 ~ 54V/1.40A	87%	0.95	178*68*43.5
LUP-075X141Y	75	60 ~ 141	0.11 ~ 1.10	0.53 ~ 1.10	60 ~ 107V/0.70A	87%	0.96	178*68*43.5
LUP-120X041Y	120	20 ~ 41	0.43 ~ 4.29	2.93 ~ 4.29	20 ~ 36V/3.33A	90%	0.96	217*68*43.5
LUP-120X062Y	120	20 ~ 62	0.30 ~ 3.00	1.93 ~ 3.00	20 ~ 48V/2.50A	90%	0.96	217*68*43.5
LUP-120X170Y	120	60 ~ 170	0.14 ~ 1.40	0.70 ~ 1.40	60 ~ 114V/1.05A	91%	0.96	217*68*43.5
LUP-120X305Y	120	120 ~ 305	0.07 ~ 0.70	0.40 ~ 0.70	120 ~ 171V/0.70A	91%	0.96	217*68*43.5
LUP-150X036Y	150	20 ~ 36	0.54 ~ 5.36	4.17 ~ 5.36	20 ~ 36V/4.17A	90%	0.96	217*68*43.5
LUP-150X054Y	150	20 ~ 54	0.42 ~ 4.20	2.80 ~ 4.20	20 ~ 48V/3.13A	90%	0.96	217*68*43.5
LUP-150X120Y	150	60 ~ 120	0.21 ~ 2.10	1.25 ~ 2.10	60 ~ 107V/1.40A	90%	0.96	217*68*43.5
LUP-150X214Y	150	80 ~ 214	0.11 ~ 1.10	0.70 ~ 1.10	80 ~ 143V/1.05A	90%	0.96	217*68*43.5
LUP-150X335Y	150	176 ~ 335	0.07 ~ 0.70	0.45 ~ 0.70	176 ~ 214V/0.70A	91%	0.96	217*68*43.5
LUP-200X041Y	200	20 ~ 41	0.70 ~ 7.00	4.88 ~ 7.00	20 ~ 36V/5.56A	90%	0.96	247*68*43.5
LUP-200X062Y	200	20 ~ 62	0.50 ~ 5.00	3.23 ~ 5.00	20 ~ 48V/4.17A	92%	0.96	247*68*43.5
LUP-200X445Y	200	230 ~ 445	0.07 ~ 0.70	0.45 ~ 0.70	230 ~ 286V/0.70A	92%	0.96	247*68*43.5
LUP-240X041Y	240	20 ~ 41	0.75 ~ 7.50	5.86 ~ 7.50	20 ~ 36V/6.70A	91%	0.96	247*68*43.5
LUP-240X062Y	240	20 ~ 62	0.52 ~ 5.20	3.87 ~ 5.20	20 ~ 48V/5.00A	92%	0.96	247*68*43.5
LUP-240X180Y	240	80 ~ 180	0.21 ~ 2.10	1.33 ~ 2.10	80 ~ 170V/1.40A	92%	0.96	247*68*43.5
LUP-240X368Y	240	190 ~ 368	0.11 ~ 1.10	0.65 ~ 1.10	190 ~ 228V/1.05A	93%	0.96	247*68*43.5

Note: 1. X=M, Programmable output with 0-10V/PWM/Timer dimming;  
 X=R, Programmable output with timer dimming;  
 X=D, DALI dimming.  
 2. Y=A12, output with 12V/0.3A auxiliary power supply.

# Class II Offline programmable LED Driver



## Product Selection Guide

Model	Power (W)	Output voltage range (Vdc)	Full power current adjustable range (A)	Default output spec	Typ. Eff.	Typ. PF	Dimensions (L*W*H)mm
XCP-075Y062	75	38~62	1.21~1.88	38~53V/1.40A	89.0%	0.96	128.6*68*37
XCP-075Y108	75	54~108	0.70~1.05	54~108V/0.70A	90.0%	0.96	128.6*68*37
XCP-105Y062	105	38~62	1.69~2.50	38~50V/2.10A	91.0%	0.97	153.6*68*37
XCP-105Y150	105	75~150	0.70~1.05	75~100V/1.05A	92.0%	0.97	153.6*68*37
XCP-150Y062	150	38~62	2.42~3.60	38~47V/3.15A	91.0%	0.97	173.6*68*37
XCP-150Y214	150	107~214	0.70~1.05	107~214V/0.70A	92.0%	0.97	173.6*68*37
XCP-200Y062	200	38~62	3.23~5.00	38~47V/4.20A	92.0%	0.97	193.6*68*39
XCP-200Y286	200	143~286	0.70~1.05	143~286V/0.70A	93.5%	0.97	193.6*68*39
XCP-240Y062	240	38~62	3.88~5.71	38~48V/5.00A	93.0%	0.97	208.6*68*39
XCP-240Y343	240	171~343	0.70~1.05	171~343V/0.70A	93.5%	0.97	208.6*68*39

Note: Y=M, Programmable output with 1~10V/PWM/Timer dimming; Y=V, Output current adjustable through built-in potentiometer.

## Features

- ▶ Universal input voltage range: 90~305Vac;
- ▶ Constant power design;
- ▶ Offline programmable;
- ▶ 1-10V, PWM, Timer dimming;
- ▶ Output lumen compensation;
- ▶ Output and dimming signal isolating;
- ▶ Surge protection: DM 5KV;
- ▶ Protections: SCP, OVP, OTP;
- ▶ IP67 design for indoor and outdoor applications;
- ▶ Suitable for dry / damp / wet locations;
- ▶ 5 Years warranty.

## Application

- ▶ LED street lighting, industrial lighting, and landscape lighting.

# Class II DALI Programmable LED Driver



## Features

- ▶ Universal input voltage: 90 ~ 305Vac;
- ▶ Constant power design, outputs programmable;
- ▶ Can be with virtual midnight, output lumen compensation;
- ▶ Equipped with interactive visual software to customize output setting;
- ▶ Dimming: DALI-2 & Timer dimming, dim-to-off;
- ▶ 12V/0.3A auxiliary power supply is optional;
- ▶ Output is isolated with dimming signal;
- ▶ Stand-by power consumption <0.5W;
- ▶ Multiple protection: SCP / OVP/OTP;
- ▶ Surge protection: DM 5KV;
- ▶ Degrees of protection: IP67;
- ▶ 5 Years warranty.

## Application

- ▶ LED street lighting, industrial lighting, and landscape lighting.

## Product Selection Guide

Model	Power (W)	Output voltage range (Vdc)	Output current adjustable range (A)	Full power current adjustable range (A)	Default output spec	Typ. Eff.	Typ. PF	Dimensions (L*W*H)mm
LCP-075D041	75	20 ~ 41	0.27 ~ 2.68	1.83 ~ 2.68	20 ~ 36V/2.10A	87%	0.95	178*68*43.5
LCP-075D062	75	20 ~ 62	0.19 ~ 1.88	1.21 ~ 1.88	20 ~ 54V/1.40A	87%	0.95	178*68*43.5
LCP-075D141	75	60 ~ 141	0.11 ~ 1.10	0.53 ~ 1.10	60 ~ 107V/0.70A	87%	0.96	178*68*43.5
LCP-120D041	120	20 ~ 41	0.43 ~ 4.29	2.93 ~ 4.29	20 ~ 36V/3.33A	90%	0.96	217*68*43.5
LCP-120D062	120	20 ~ 62	0.30 ~ 3.00	1.93 ~ 3.00	20 ~ 48V/2.50A	90%	0.96	217*68*43.5
LCP-120D170	120	60 ~ 170	0.14 ~ 1.40	0.70 ~ 1.40	60 ~ 114V/1.05A	91%	0.96	217*68*43.5
LCP-120D305	120	120 ~ 305	0.07 ~ 0.70	0.40 ~ 0.70	120 ~ 171V/0.70A	91%	0.96	217*68*43.5
LCP-150D036	150	20 ~ 36	0.54 ~ 5.36	4.17 ~ 5.36	20 ~ 36V/4.17A	90%	0.96	217*68*43.5
LCP-150D054	150	20 ~ 54	0.42 ~ 4.20	2.80 ~ 4.20	20 ~ 48V/3.13A	90%	0.96	217*68*43.5
LCP-150D120	150	60 ~ 120	0.21 ~ 2.10	1.25 ~ 2.10	60 ~ 107V/1.40A	90%	0.96	217*68*43.5
LCP-150D214	150	80 ~ 214	0.11 ~ 1.10	0.70 ~ 1.10	80 ~ 143V/1.05A	90%	0.96	217*68*43.5
LCP-150D335	150	176 ~ 335	0.07 ~ 0.70	0.45 ~ 0.70	176 ~ 214V/0.70A	91%	0.96	217*68*43.5
LCP-200D041	200	20 ~ 41	0.70 ~ 7.00	4.88 ~ 7.00	20 ~ 36V/5.56A	90%	0.96	247*68*43.5
LCP-200D062	200	20 ~ 62	0.50 ~ 5.00	3.23 ~ 5.00	20 ~ 48V/4.17A	92%	0.96	247*68*43.5
LCP-200D445	200	230 ~ 445	0.07 ~ 0.70	0.45 ~ 0.70	230 ~ 286V/0.70A	92%	0.96	247*68*43.5
LCP-240D041	240	20 ~ 41	0.75 ~ 7.50	5.86 ~ 7.50	20 ~ 36V/6.70A	91%	0.96	247*68*43.5
LCP-240D062	240	20 ~ 62	0.52 ~ 5.20	3.87 ~ 5.20	20 ~ 48V/5.00A	92%	0.96	247*68*43.5
LCP-240D180	240	80 ~ 180	0.21 ~ 2.10	1.33 ~ 2.10	80 ~ 170V/1.40A	92%	0.96	247*68*43.5
LCP-240D368	240	190 ~ 368	0.11 ~ 1.10	0.65 ~ 1.10	190 ~ 228V/1.05A	93%	0.96	247*68*43.5



# 249 ~ 528Vac IR Programmable LED Driver



## Features

- ▶ Input voltage range: 249 ~ 528Vac;
- ▶ Constant power design, outputs programmable;
- ▶ Equipped with interactive visual software to customize output setting;
- ▶ 3 in 1 dimming mode: 0-10V, PWM, Timer control;
- ▶ Can be with virtual midnight, output lumen compensation;
- ▶ Multiple protection: SCP, OVP, OTP;
- ▶ Surge protection: DM 4KV, CM 6KV;
- ▶ Degrees of protection: IP67;
- ▶ 5 Years warranty.

## Application

- ▶ LED street lighting, industrial lighting, and landscape lighting.

## Product Selection Guide

Model	Power (W)	Output voltage range (Vdc)	Output current adjustable range (A)	Full power current adjustable range (A)	Default output spec	Typ. Eff.	Typ. PF	Dimensions (L*W*H)mm
LHP-060X036 *	60	18 ~ 36	0.21 ~ 2.10	1.67 ~ 2.10	18 ~ 36V/1.67A	86%	0.91	207*68*39
LHP-060X062	60	20 ~ 62	0.14 ~ 1.40	0.97 ~ 1.40	20 ~ 57V/1.05A	86%	0.91	207*68*39
LHP-060X090	60	45 ~ 90	0.10 ~ 0.95	0.67 ~ 0.95	45 ~ 85V/0.70A	83%	0.91	207*68*39
LHP-105X036	105	18 ~ 36	0.42 ~ 4.20	2.91 ~ 4.20	18 ~ 36V/2.91A	91%	0.93	227*68*43.5
LHP-105X062	105	20 ~ 62	0.30 ~ 3.00	1.69 ~ 3.00	20 ~ 42V/2.50A	91%	0.93	227*68*43.5
LHP-105X150	105	60 ~ 150	0.14 ~ 1.40	0.70 ~ 1.40	60 ~ 75V/1.40A	91%	0.93	227*68*43.5
LHP-150X036	150	18 ~ 36	0.50 ~ 5.00	4.17 ~ 5.00	18 ~ 36V/4.20A	91%	0.95	247*68*43.5
LHP-150X062	150	20 ~ 62	0.375 ~ 3.75	2.42 ~ 3.75	20 ~ 54V/2.80A	91%	0.95	247*68*43.5
LHP-150X108	150	60 ~ 108	0.21 ~ 2.10	1.39 ~ 2.10	60 ~ 71V/2.10A	91%	0.95	247*68*43.5
LHP-150X214	150	80 ~ 214	0.11 ~ 1.10	0.70 ~ 1.10	80 ~ 214V/0.70A	91%	0.95	247*68*43.5
LHP-200X036	200	18 ~ 36	0.66 ~ 6.60	5.55 ~ 6.60	18 ~ 36V/5.50A	91%	0.95	257*68*43.5
LHP-200X062	200	20 ~ 62	0.50 ~ 5.00	3.22 ~ 5.00	20 ~ 47V/4.20A	91%	0.95	257*68*43.5
LHP-200X120	200	60 ~ 120	0.28 ~ 2.80	1.67 ~ 2.80	60 ~ 72V/2.80A	91%	0.95	257*68*43.5
LHP-200X200	200	120 ~ 200	0.14 ~ 1.40	1.00 ~ 1.40	120 ~ 143V/1.4A	91%	0.95	257*68*43.5
LHP-200X305	200	190 ~ 305	0.10 ~ 1.00	0.66 ~ 1.00	190 ~ 285V/0.7A	91%	0.95	257*68*43.5

Note: X=M, Programmable output with 0 ~ 10V/PWM/Timer dimming;  
X=R, Programmable output with timer dimming.



# Input OVP LED Driver



## Features

- ▶ Input voltage range: 108 ~ 305Vac;
- ▶ Constant current design;
- ▶ THD<10%;
- ▶ Surge protection: DM 4KV, CM 6KV;
- ▶ Multiple protection: Input OVP/Output OVP/SCP/OTP;
- ▶ 440Vac Input OVP is optional;
- ▶ Degrees of protection: IP67;
- ▶ 5 Years warranty.

## Application

- ▶ LED street lighting, industrial lighting, and landscape lighting.

## Product Selection Guide

Model	Power (W)	Output voltage range (Vdc)	Output current (A)	Typ. Eff.	Typ. PF	Dimensions (L*W*H)mm
EHC-026B074	26	37 ~ 74	0.35	87.5%	0.97	96*64*33
EHC-026B052	26	37 ~ 52	0.50	87%	0.97	96*64*33
EHC-026B043	26	25 ~ 43	0.60	87%	0.97	96*64*33
EHC-026B037	26	20 ~ 37	0.70	87%	0.97	96*64*33
EHC-026B025	26	18 ~ 25	1.05	85%	0.97	96*64*33
EHC-042B084	42	42 ~ 84	0.50	88%	0.97	104*64*33
EHC-042B060	42	30 ~ 60	0.70	88%	0.97	104*64*33
EHC-042B056	42	28 ~ 56	0.75	87%	0.97	104*64*33
EHC-042B053	42	28 ~ 53	0.80	87%	0.97	104*64*33
EHC-042B049	42	25 ~ 49	0.86	87%	0.97	104*64*33
EHC-042B040	42	20 ~ 40	1.05	87%	0.97	104*64*33
EHC-060B086	60	48 ~ 86	0.70	87%	0.97	111*64*33
EHC-060B070	60	35 ~ 70	0.86	87%	0.97	111*64*33
EHC-060B057	60	34 ~ 57	1.05	87%	0.97	111*64*33
EHC-105B150	105	75 ~ 150	0.70	91%	0.97	164*68*39
EHC-105B122	105	61 ~ 122	0.86	90%	0.97	164*68*39
EHC-105B100	105	50 ~ 100	1.05	90%	0.97	164*68*39
EHC-105B075 *	105	50 ~ 75	1.40	89%	0.97	179*68*43.5
EHC-150B107 *	150	60 ~ 107	1.40	91%	0.97	179*68*43.5
EHC-150B214	150	107 ~ 214	0.70	90%	0.97	179*68*43.5
EHC-150B174	150	87 ~ 174	0.86	89%	0.97	179*68*43.5
EHC-150B143	150	72 ~ 143	1.05	88%	0.97	179*68*43.5

Note: EHC-105B075 & EHC-150B107 input 180 ~ 264Vac, only CE certification, no input OVP.

# Input OVP Programmable LED Driver



## Features

- ▶ Universal input voltage: 90 ~ 305Vac;
- ▶ Constant current design, outputs programmable;
- ▶ Flicker free (optional) ;
- ▶ 3 in 1 dimming mode: 0-10V, PWM, Timer control;
- ▶ THD<10%;
- ▶ Multiple protection: OVP/SCP/OTP;
- ▶ Surge protection: DM 4KV, CM 6KV;
- ▶ 440Vac input OVP is optional;
- ▶ Degrees of protection: IP67;
- ▶ 5 years warranty.

## Application

- ▶ LED street lighting, industrial lighting, and landscape lighting.

## Product Selection Guide

Model	Power (W)	Output voltage range(Vdc)	Output current(A)	Typ. Eff.	Typ. PF	Dimensions (L*W*H)mm
PHC-042M036	42	20 ~ 36	1.17	85%	0.96	117*67*37
PHC-042M048	42	38 ~ 48	0.90	85%	0.96	117*67*37
PHC-042M062	42	30 ~ 62	0.70	85%	0.96	117*67*37
PHC-060M036	60	20 ~ 36	1.67	86%	0.96	132*67*37
PHC-060M048	60	38 ~ 48	1.30	86%	0.96	132*67*37
PHC-060M062	60	30 ~ 62	0.97	86%	0.96	132*67*37

# LUC/XUP Programmable LED Driver



## Features

- ▶ Universal input voltage: 100 ~ 264Vac;
- ▶ High power factor >0.95;
- ▶ THD<10%;
- ▶ Multiple protection: SCP, OVP, OTP;
- ▶ DALI dimming control, dim-to-off;
- ▶ Surge protection: line-line 2KV, line-earth 4KV;
- ▶ Degrees of protection: LUC series IP67, XUP series IP65;
- ▶ 5 Years warranty.

## Application

- ▶ Metro, underground parking, office, hotel, hospital, and other indoor or outdoor lighting.

## Product Selection Guide

Model	Power (W)	Output voltage range(Vdc)	Max. current (A)	Default output spec	Typ. Eff.	Typ. PF	Dimensions (L*W*H)mm
LUC-025D062H	19	20-45	0.42	20-45V/0.42A	85.0%	0.96	173*47.6*35
LUC-042D062H	37	20-45	0.83	20-45V/0.83A	86.0%	0.96	173*47.6*35
XUP-012D048	12	28-48	0.33	28-36V/0.33A	85.0%	0.96	114*59*32
XUP-018D048	18	28-48	0.50	28-36V/0.50A	85.0%	0.96	114*59*32
XUP-026D048	26	28-48	0.73	28-35V/0.73A	85.0%	0.96	114*59*32
XUP-036D048	36	28-48	1.00	28-36V/1.00A	86.0%	0.96	114*59*32
XUP-042D048	42	28-48	1.16	28-36V/1.16A	87.0%	0.96	114*59*32
XUP-054D048	54	28-48	1.50	28-36V/1.5A	88.0%	0.96	114*59*32

# Non-isolated Constant Current LED Driver



## Features

- ▶ Universal input voltage: 90 ~ 305Vac;
- ▶ High efficiency: 94%( typ.);
- ▶ High power factor > 0.96;
- ▶ Constant current output;
- ▶ Non-isolated design, flicker free;
- ▶ Surge protection: DM 4KV, CM 6KV;
- ▶ Protection: SCP/OVP;
- ▶ Degrees of protection: IP65;
- ▶ 5 Years warranty.

## Application

- ▶ LED street lighting, industrial lighting, and landscape lighting.

## Product Selection Guide

Model	Power (W)	Output voltage range (Vdc)	Max. current (A)	Typ. Eff.	Typ. PF	Dimensions (L*W*H) mm
MNC-075X240	75	170~240	0.38	94%	0.97	138*55*37
MNC-100X240	100	170~240	0.45	94%	0.97	138*55*37
MNC-120X240	120	170~240	0.55	94%	0.97	138*55*37
MNC-150X240	150	170~240	0.65	94%	0.97	138*55*37
MNC-200X240	200	170~240	1.00	95%	0.97	151*63.5*41.5
MNC-260X240	260	170~240	1.40	95%	0.97	190*68*43.5

Note: X=M, 1-10V/PWM dimming, X=B without dimming.

# Anti-explosion LED Driver



## Features

- ▶ Input voltage range: 90 ~ 264Vac;
- ▶ Constant current design;
- ▶ High power factor > 0.95;
- ▶ Surge protection: DM 4KV, CM 6KV;
- ▶ Multiple protection: SCP/OVP/OTP;
- ▶ Degrees of protection: IP65;
- ▶ 5 Years warranty.

## Application

- ▶ Industrial lighting, explosion protection lighting.

## Product Selection Guide

Model	Power (W)	Output voltage range (Vdc)	Output current (A)	Typ. Eff.	Dimensions (Φ*H) mm
MEP-040B058	40	30-58	0.7	87%	75*32
MEP-060B043	60	26-43	1.4	88%	92*38
MEP-080B058	80	30-58	1.4	88%	112*38
MEP-120B058	120	30-58	2.1	89%	112*38



# Programmable High Bay LED Driver with Dim-to-off



## Features

- ▶ Universal input voltage: 90 ~ 305Vac;
- ▶ Constant power design;
- ▶ Offline programmable;
- ▶ 2 in 1 dimming mode: 0-10V, PWM dimming, dim-to-off;
- ▶ Multiple protection: SCP, OVP, OTP;
- ▶ Surge protection: DM 4KV, CM 6KV;
- ▶ Degrees of protection: IP65;
- ▶ 5 Years warranty.

## Application

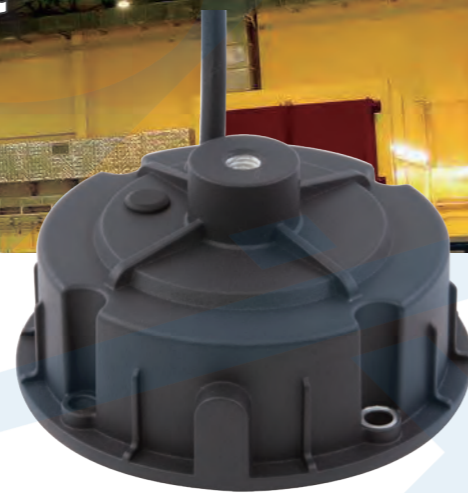
- ▶ Suitable for industrial lighting.

## Product Selection Guide

Model	Power (W)	Output voltage range (Vdc)	Output current adjustable range (A)	Full power current adjustable range (A)	Default output spec	Typ. Eff.	Typ. PF	Dimensions (Φ*H)mm
MTP-060Y040*	60	24 ~ 40	1.00 ~ 1.90	1.50 ~ 1.90	24 ~ 32V/1.90A	88%	0.96	115*64.2
MTP-060Y054	60	27 ~ 54	1.10 ~ 1.50	1.10 ~ 1.50	27 ~ 40V/1.50A	88%	0.96	115*64.2
MTP-120Y040	120	24 ~ 40	2.00 ~ 3.75	3.00 ~ 3.75	24 ~ 32V/3.75A	89%	0.97	130*74.1
MTP-120Y054	120	27 ~ 54	1.50 ~ 2.85	2.25 ~ 2.85	27 ~ 42V/2.85A	90%	0.97	130*74.1
MTP-120Y068	120	40 ~ 68	1.20 ~ 2.15	1.77 ~ 2.15	40 ~ 56V/2.15A	91%	0.97	130*74.1
MTP-160Y038	160	24 ~ 38	2.90 ~ 5.00	4.20 ~ 5.00	24 ~ 32V/5.0A	88%	0.97	146*74.1
MTP-160Y054	160	27 ~ 54	2.10 ~ 3.80	2.96 ~ 3.80	27 ~ 42V/3.8A	89%	0.97	146*74.1
MTP-160Y068	160	40 ~ 68	1.70 ~ 2.85	2.35 ~ 2.85	40 ~ 56V/2.85A	89%	0.97	146*74.1
MTP-200Y038	200	24 ~ 38	3.70 ~ 6.25	5.27 ~ 6.25	24 ~ 32V/6.25A	91%	0.98	146*74.1
MTP-200Y054	200	27 ~ 54	2.60 ~ 4.80	3.7 ~ 4.80	27 ~ 42V/4.80A	91%	0.98	146*74.1
MTP-200Y068	200	40 ~ 68	2.00 ~ 3.60	2.95 ~ 3.60	40 ~ 56V/3.60A	92%	0.98	146*74.1
MTP-240Y038	240	24 ~ 38	4.40 ~ 7.50	6.30 ~ 7.50	24 ~ 32V/7.50A	91%	0.97	176.2*74.4
MTP-240Y054	240	27 ~ 54	3.00 ~ 5.72	4.44 ~ 5.72	27 ~ 42V/5.72A	92%	0.97	176.2*74.4
MTP-240Y068	240	40 ~ 68	2.50 ~ 4.20	3.52 ~ 4.20	40 ~ 57V/4.20A	92%	0.97	176.2*74.4

Note: Y=M, 0-10V/PWM dimming, outputs programmable, output current adjustable range: 10%-100%Imax; Y=V, Output current adjustable through built-in potentiometer.

# Non-isolated Constant Current LED Driver



SAA CB CE CCC UL LISTED E332689 Class P FC

## Features

- ▶ G6 Series: Input voltage range 90~305Vac;
- ▶ G6C Series: Input voltage range 108~380Vac;
- ▶ Constant current driver, Efficiency up to 95%;
- ▶ Flicker free; Pf>0.96; THD<10%;
- ▶ Isolated dimming: 0-10Vdc, 1-10Vdc, PWM, Resistor, DALI-2, dim-to-off;
- ▶ No glimmer after Dim-to-off (optional) ;
- ▶ 12V/0.2A auxiliary power supply;
- ▶ Standby power<0.5W;
- ▶ Surge protection: DM 4KV, CM 6KV;
- ▶ Multiple protection: SCP, OVP, OTP;
- ▶ IP65, Suitable for industrial lighting;
- ▶ 5 Years warranty;

## Application

- ▶ Suitable for industrial lighting.

## Product Selection Guide

Model	Power (W)	Output voltage range (Vdc)	Max. Output current (A)	Default output spec	Typ. Eff.	Typ. PF	Dimensions (Φ*H)mm
G6-096M260A12H	96	180-260	0.450	0.450A	95%	0.96	130*64.60
G6-120M260A12H	120	180-260	0.560	0.560A	95%	0.96	130*64.60
G6-160M260A12H	160	180-260	0.740	0.740A	95%	0.96	130*64.60
G6-200M260A12H	200	180-260	0.930	0.930A	95%	0.96	130*64.60
G6-240M260A12H	240	180-260	1.100	1.100A	95%	0.96	130*64.60
G6-096M260	96	180-260	0.450	0.450A	95%	0.96	130*64.60
G6-120M260	120	180-260	0.560	0.560A	95%	0.96	130*64.60
G6-160M260	160	180-260	0.740	0.740A	95%	0.96	130*64.60
G6-200M260	200	180-260	0.930	0.930A	95%	0.96	130*64.60
G6-240M260	240	180-260	1.100	1.100A	95%	0.96	130*64.60
G6-096V260	96	180-260	0.450	0.450A	95%	0.96	130*64.60
G6-120V260	120	180-260	0.560	0.560A	95%	0.96	130*64.60
G6-160V260	160	180-260	0.740	0.740A	95%	0.96	130*64.60
G6-200V260	200	180-260	0.930	0.930A	95%	0.96	130*64.60
G6-240V260	240	180-260	1.100	1.100A	95%	0.96	130*64.60
G6-096D260H	96	180-260	0.450	0.450A	95%	0.96	130*64.60
G6-120D260H	120	180-260	0.560	0.560A	95%	0.96	130*64.60
G6-160D260H	160	180-260	0.740	0.740A	95%	0.96	130*64.60
G6-200D260H	200	180-260	0.930	0.930A	95%	0.96	130*64.60
G6-240D260H	240	180-260	1.100	1.100A	95%	0.96	130*64.60
G6C-096M260A12H	96	180-260	0.450	0.450A	95%	0.96	130*64.60
G6C-120M260A12H	120	180-260	0.560	0.560A	95%	0.96	130*64.60
G6C-160M260A12H	160	180-260	0.740	0.740A	95%	0.96	130*64.60
G6C-200M260A12H	200	180-260	0.930	0.930A	95%	0.96	130*64.60
G6C-240M260A12H	240	180-260	1.100	1.100A	95%	0.96	130*64.60
G6C-096M260	96	180-260	0.450	0.450A	95%	0.96	130*64.60
G6C-120M260	120	180-260	0.560	0.560A	95%	0.96	130*64.60
G6C-160M260	160	180-260	0.740	0.740A	95%	0.96	130*64.60
G6C-200M260	200	180-260	0.930	0.930A	95%	0.96	130*64.60
G6C-240M260	240	180-260	1.100	1.100A	95%	0.96	130*64.60

## DIFFERENCE DESCRIPTION

Features	G6 A Series	G6 M Series	G6 D Series	G6 V Series	G6C A Series	G6C M Series
Input Voltage	90-305Vac	90-305Vac	90-305Vac	90-305Vac	108-380Vac	108-380Vac
Adjustable Output Current	built-in potentiometer	built-in potentiometer	programmable	built-in potentiometer	built-in potentiometer	built-in potentiometer
Auxiliary Power Supply	12V/0.2A	/	/	/	12V/0.2A	/
Dimming Control	0-10V,PWM,Resistor	1-10V,PWM,Resistor	DALI	/	0-10V,PWM,Resistor	1-10V,PWM,Resistor
Dim-to-off	√	/	√	/	√	/
Standby Power Consumption	<0.5W	/	<0.5W	/	/	/

# Non-isolated Programmable LED Driver with Dim-to-off



# Non-isolated Constant Current LED Driver



## Features



- ▶ Universal input voltage: 90 ~ 305Vac;
- ▶ High efficiency: 95%( typ.);
- ▶ High power factor > 0.96;
- ▶ Constant current output, outputs programmable;
- ▶ Non-isolated design, flicker free;
- ▶ 0-10V, PWM dimming, dim-to-off;
- ▶ 12V/0.2A auxiliary power supply is optional;
- ▶ Surge protection: DM 4KV, CM 6KV;

- ▶ Protection: SCP/OVP/OTP;
- ▶ Degrees of protection: IP65;
- ▶ 5 Years warranty.

## Application

- ▶ Suitable for industrial lighting.

## Product Selection Guide

Model	Power (W)	Output voltage range (Vdc)	Output current(A)	Typ. Eff.	Typ. PF	Dimensions (Φ*H)mm
MTN-096M260	96	200 ~ 260	0.37	95%	0.96	115*64.2
MTN-120M260H	120	200 ~ 260	0.50	95%	0.96	115*64.2
MTN-120M260	120	200 ~ 260	0.50	95%	0.96	130*74.1
MTN-160M260	160	200 ~ 260	0.615	95%	0.96	130*74.1
MTN-200M260H	200	200 ~ 260	0.81	95%	0.96	130*74.1
MTN-200M260	200	200 ~ 260	0.81	95%	0.96	146*74.1
MTN-240M260	240	200 ~ 260	0.93	95%	0.96	146*74.1

## Features

- ▶ Universal input voltage: 90 ~ 305Vac;
- ▶ High efficiency: 94%( typ.);
- ▶ High power factor > 0.96;
- ▶ Constant current output;
- ▶ Non-isolated design, flicker free;
- ▶ Surge protection: DM 4KV, CM 6KV;
- ▶ Protection: SCP/OVP;
- ▶ Degrees of protection: IP65;
- ▶ 5 Years warranty.

## Application

- ▶ Suitable for industrial lighting.

## Product Selection Guide

Model	Power (W)	Output voltage range (Vdc)	Output current(A)	Typ. Eff.	Typ. PF	Dimensions (Φ*H)mm
RTN-096B260	96	200 ~ 260	0.37	94%	0.96	115*64.2
RTN-120B260	120	200 ~ 260	0.46	94%	0.96	115*64.2
RTN-160B260	160	200 ~ 260	0.62	94%	0.96	115*64.2
RTN-200B260	200	200 ~ 260	0.77	94%	0.96	130*74.1
RTN-240B260	240	200 ~ 260	0.92	94%	0.96	130*74.1



### Features

- ▶ Input voltage range: 180~264Vac;
- ▶ Constant voltage output;
- ▶ Low inrush current <12A (for 400W)
- ▶ High power factor up to 0.98 (for 400W);
- ▶ Design against rain splash;
- ▶ Multiple protection: SCP, OVP, OLP, OTP;
- ▶ Surge protection: DM 2KV, CM 4KV(for 400W);
- ▶ 3 Years warranty;

### Application

- ▶ Suitable for landscape lighting.

### Product Selection Guide

Model	Power (W)	Output voltage (Vdc)	Output current (A)	Typ. Eff.	Dimensions (L*W*H)mm
MSV-350B012	350	12	0~26.7	88%	220*130*48
MSV-350B024	350	24	0~14.5	90%	220*130*48
MSV-400B024	400	24	0~16.7	92%	220*130*48

### Features

- ▶ Input voltage range: 176 ~ 264Vac;
- ▶ Constant voltage design;
- ▶ Active power factor correction;
- ▶ High power factor > 0.96;
- ▶ Multiple protection: SCP, OVP, OCP;
- ▶ Surge protection: DM 1KV, CM 2KV;
- ▶ Degrees of protection: IP65;
- ▶ 3 Years warranty.

### Application

- ▶ Suitable for landscape lighting.

### Product Selection Guide

Model	Power (W)	Output voltage (Vdc)	Output current (A)	Typ. Eff.	Typ. PF	Dimensions (L*W*H)mm
LDV-036B024	36	24	0 ~ 1.50	87%	0.96	222*29*20
LDV-060B024	60	24	0 ~ 2.50	87%	0.96	242*40*22



# Constant Voltage LED Driver



## Features

- ▶ Universal input voltage: 90 ~ 305Vac;
- ▶ Constant voltage design;
- ▶ Active power factor correction;
- ▶ High power factor > 0.96;
- ▶ Multiple protection: SCP, OVP, OTP, OLP;
- ▶ Surge protection:
  - 35W/50W: DM 4KV, CM 6KV
  - 75 ~ 320W: DM 5KV, CM 10KV;
- ▶ Degrees of protection: IP67;
- ▶ 5 Years warranty.

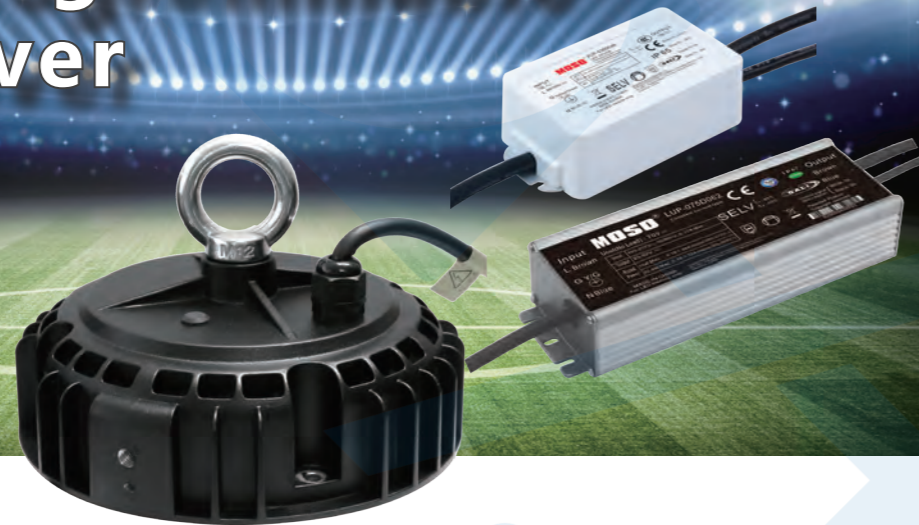
## Application

- ▶ Suitable for landscape lighting.

## Product Selection Guide

Model	Power (W)	Output voltage (Vdc)	Output current (A)	Typ. Eff.	Typ. PF	Dimensions (L*W*H)mm
LSV-035B012	35	12	0 ~ 2.90	85%	0.95	199*42.5*34.5
LSV-035B024	35	24	0 ~ 1.46	87%	0.95	199*42.5*34.5
LSV-035B036	35	36	0 ~ 0.97	87%	0.95	199*42.5*34.5
LSV-035B048	35	48	0 ~ 0.73	88%	0.95	199*42.5*34.5
LSV-050B012	50	12	0 ~ 4.17	85%	0.95	199*42.5*34.5
LSV-050B024	50	24	0 ~ 2.08	88%	0.95	199*42.5*34.5
LSV-050B036	50	36	0 ~ 1.39	89%	0.95	199*42.5*34.5
LSV-050B048	50	48	0 ~ 1.04	89%	0.95	199*42.5*34.5
LSV-075B012	75	12	0 ~ 6.25	89%	0.96	164*68*39
LSV-075B024	75	24	0 ~ 3.13	87%	0.96	164*68*39
LSV-075B036	75	36	0 ~ 2.08	87%	0.96	164*68*39
LSV-075B048	75	48	0 ~ 1.56	87%	0.96	164*68*39
LSV-100B012	100	12	0 ~ 8.33	91%	0.96	178*68*39
LSV-100B024	100	24	0 ~ 4.17	91%	0.96	178*68*39
LSV-100B036	100	36	0 ~ 2.78	92%	0.96	178*68*39
LSV-100B048	100	48	0 ~ 2.08	92%	0.96	178*68*39
LSV-150B012	150	12	0 ~ 12.5	90%	0.96	207*68*39
LSV-150B024	150	24	0 ~ 6.25	91%	0.96	207*68*39
LSV-150B036	150	36	0 ~ 4.17	91%	0.96	207*68*39
LSV-150B048	150	48	0 ~ 3.13	91%	0.96	207*68*39
LSV-200B012	200	12	0 ~ 16.67	91%	0.96	232*68*43.5
LSV-200B024	200	24	0 ~ 8.33	92%	0.96	232*68*43.5
LSV-200B036	200	36	0 ~ 5.56	92%	0.96	247*68*43.5
LSV-200B048	200	48	0 ~ 4.17	92%	0.96	247*68*43.5
LSV-320B012	264	12	0 ~ 22.00	91%	0.96	234*98*40
LSV-320B024	320	24	0 ~ 13.33	92%	0.96	234*98*40
LSV-320B036	320	36	0 ~ 8.90	92%	0.96	234*98*40
LSV-320B048	320	48	0 ~ 6.67	92%	0.96	234*98*40

# DALI Programmable LED Driver



## Features

- ▶ Universal input voltage: 90 ~ 305Vac;
- ▶ Constant power design, outputs programmable;
- ▶ Equipped with interactive visual software to customize output setting;
- ▶ DALI dimming control, dim-to-off;
- ▶ LXP series 12V/0.3A auxiliary power supply is optional;
- ▶ LXP series output is isolated with dimming signal;
- ▶ LXP series stand-by power consumption <0.5W;
- ▶ Multiple protection: SCP / OVP / OTP;
- ▶ Surge protection:
  - LCP series: DM 5KV
  - LUP series: DM 5KV, CM 10KV
  - LTP series: DM 4KV, CM 6KV
  - XUP series: line-line 2KV, line-earth 4KV;
- ▶ Degrees of protection:
  - LXP series: IP67
  - LTP/XUP series: IP65;
- ▶ 5 Years warranty.

## Application

- ▶ LED street lighting, industrial lighting, and landscape lighting.

## Product Selection Guide

Model	Power (W)	Output voltage range (Vdc)	Output current adjustable range (A)	Full power current adjustable range (A)	Typ. Eff.	Typ. PF	Dimensions (L*W*H)mm	Certification
XUP-012D048	12	28-48	0.33	0.26 ~ 0.33	85.0%	0.96	114*59*32	CCC CE
XUP-018D048	18	28-48	0.50	0.38 ~ 0.50	85.0%	0.96	114*59*32	
XUP-026D048	26	28-48	0.73	0.54 ~ 0.73	85.0%	0.96	114*59*32	
XUP-036D048	36	28-48	1.00	0.75 ~ 1.00	86.0%	0.96	114*59*32	
XUP-042D048	42	28-48	1.16	0.87 ~ 1.16	87.0%	0.96	114*59*32	
XUP-054D048	54	28-48	1.50	1.13 ~ 1.50	88.0%	0.96	114*59*32	
LXP-075D041*	75	20 ~ 41	0.27 ~ 2.68	1.83 ~ 2.68	87%	0.95	178*68*43.5	CCC CE
LXP-075D062	75	20 ~ 62	0.19 ~ 1.88	1.21 ~ 1.88	87%	0.95	178*68*43.5	
LXP-075D141	75	60 ~ 141	0.11 ~ 1.10	0.53 ~ 1.10	87%	0.96	178*68*43.5	
LXP-120D041	120	20 ~ 41	0.43 ~ 4.29	2.93 ~ 4.29	90%	0.96	217*68*43.5	
LXP-120D062	120	20 ~ 62	0.3 ~ 3.00	1.93 ~ 3.00	90%	0.96	217*68*43.5	
LXP-120D170	120	60 ~ 170	0.14 ~ 1.40	0.70 ~ 1.40	91%	0.96	217*68*43.5	
LXP-120D305	120	120 ~ 305	0.07 ~ 0.70	0.40 ~ 0.70	91%	0.96	217*68*43.5	CCC CE CB TUV ENEC
LXP-150D036	150	20 ~ 36	0.54 ~ 5.36	4.17 ~ 5.36	90%	0.96	217*68*43.5	
LXP-150D054	150	20 ~ 54	0.42 ~ 4.20	2.80 ~ 4.20	90%	0.96	217*68*43.5	
LXP-150D120	150	60 ~ 120	0.21 ~ 2.10	1.25 ~ 2.10	90%	0.96	217*68*43.5	
LXP-150D214	150	80 ~ 214	0.11 ~ 1.10	0.70 ~ 1.10	90%	0.96	217*68*43.5	
LXP-150D335	150	176 ~ 335	0.07 ~ 0.70	0.45 ~ 0.70	91%	0.96	217*68*43.5	
LXP-200D041	200	20 ~ 41	0.70 ~ 7.00	4.88 ~ 7.00	90%	0.96	247*68*43.5	CE, CB TUV ENEC UL, SAA Class P
LXP-200D062	200	20 ~ 62	0.50 ~ 5.00	3.23 ~ 5.00	92%	0.96	247*68*43.5	
LXP-200D445	200	230 ~ 445	0.07 ~ 0.70	0.45 ~ 0.70	92%	0.96	247*68*43.5	
LXP-240D041	240	20 ~ 41	0.75 ~ 7.50	5.86 ~ 7.50	91%	0.96	247*68*43.5	
LXP-240D062	240	20 ~ 62	0.52 ~ 5.20	3.87 ~ 5.20	92%	0.96	247*68*43.5	
LXP-240D180	240	80 ~ 180	0.21 ~ 2.10	1.33 ~ 2.10	92%	0.96	247*68*43.5	
LXP-240D368	240	190 ~ 368	0.11 ~ 1.10	0.65 ~ 1.10	93%	0.96	247*68*43.5	
LTP-160D036	160	14 ~ 36	4.00 ~ 5.71	4.44 ~ 5.71	91.5%	0.96	Φ152*H69.3	UL, SAA Class P
LTP-160D062	160	21 ~ 62	2.20 ~ 3.80	2.58 ~ 3.80	91.5%	0.96	Φ152*H69.3	
LTP-200D036	200	14 ~ 36	4.00 ~ 7.14	5.55 ~ 7.14	91%	0.96	Φ191*H74.8	
LTP-200D062	200	21 ~ 62	3.22 ~ 4.76	3.22 ~ 4.76	92%	0.96	Φ191*H74.8	
LTP-240D036	240	14 ~ 36	4.00 ~ 7.05	6.67 ~ 7.05	91%	0.96	Φ191*H74.8	
LTP-240D062	240	21 ~ 62	3.22 ~ 5.71	3.87 ~ 5.71	92%	0.96	Φ191*H74.8	

Note: X=U, Class I; X=C, Class II.

# 10KV Surge Protection Device



### Features

- ▶ Class I configuration;
- ▶ protection Level L-N, L-PE, N-PE;
- ▶ Meet the standard requirements of EN61643-11;
- ▶ Thermal fuse disconnected;
- ▶ Three-wire series style;
- ▶ Suitable for surge protection of LED driver;
- ▶ Degree of protection: IP67.

### Application

- ▶ Used outdoors or to protect outdoor electrical equipment.

### Specification

Model	MSP-10K-SURGE SPD		
Application system	Single phase power supply protection level D		
Operating voltage U <sub>o</sub>	100-277VAC 50/60Hz		
Continued operating voltage U <sub>c</sub>	320VAC		
Level of voltage protect U <sub>p</sub>	L-N<1.2KV; L/N-PE<1.5KV		
Nominal discharge current I <sub>n</sub> (8/20us)	L-N	L-PE	N-PE
	5kA	5kA	5kA
Maximum discharge current I <sub>max</sub> (8/20us)	L-N	L-PE	N-PE
	10kA	10kA	10kA
Combination wave U <sub>oc</sub>	10kV		
Maximum input current	10A(AC)		
Response speed t <sub>a</sub>	L-N ≤25ns N-PE≤100ns; L-PE≤100ns		
Applicable temperature	-40 ~ +70°C		
Standards complied	Conform to UL 1449 ( Class I ) ; GB18802.1 ; EN61643-11		
Dimension	62*35*36 (L*W*H) mm		
Sectional area of mounting	3x1.0 mm <sup>2</sup>		
LED indication function	SPD working normal	SPD failure	
	Turn on	Turn off	

# 10KV Surge Protection Device



### Features

- ▶ Class I configuration;
- ▶ protection Level L-N, L-PE, N-PE;
- ▶ Meet the standard requirements of EN61643-11;
- ▶ Thermal fuse disconnected;
- ▶ Three-wire series style;
- ▶ Suitable for surge protection of LED driver;
- ▶ Degree of protection: IP67.

### Application

- ▶ Used outdoors or to protect outdoor electrical equipment.

### Specification

Model	MSP-10K-SURGE SPD		
Application system	Single phase power supply protection level D		
Operating voltage U <sub>o</sub>	220VAC 50/60Hz		
Continued operating voltage U <sub>c</sub>	320VAC		
Level of voltage protect U <sub>p</sub>	L-N<1.3KV; L/N-PE<1.3KV		
Nominal discharge current I <sub>n</sub> (8/20us)	L-N	L-PE	N-PE
	5kA	5kA	5kA
Maximum discharge current I <sub>max</sub> (8/20us)	L-N	L-PE	N-PE
	10kA	10kA	10kA
Combination wave U <sub>oc</sub>	10kV		
Maximum input current	8A(AC)		
Response speed t <sub>a</sub>	L-N ≤65ns N-PE≤65ns; L-PE≤65ns		
Applicable temperature	-40 ~ +70°C		
Standards complied	Conform to UL 1449 ( Class I ) ; GB18802.1 ; EN61643-11		
Dimension	81.5*37.6*16 (L*W*H) mm		
Sectional area of mounting	3x1.0 mm <sup>2</sup>		
LED indication function	SPD working normal	SPD failure	
	Turn on	Turn off	

# 20KV Surge Protection Device



## Features

- ▶ Protection Mode: L-N, L-PE, N-PE;
- ▶ Function of heat protection, High safety;
- ▶ Three-wire series style;
- ▶ Suitable for surge protection of LED driver;
- ▶ High discharge capacity, low residual voltage better protective effect;
- ▶ Degree of protection: IP67;

## Application

- ▶ Used outdoors or to protect outdoor electrical equipment.

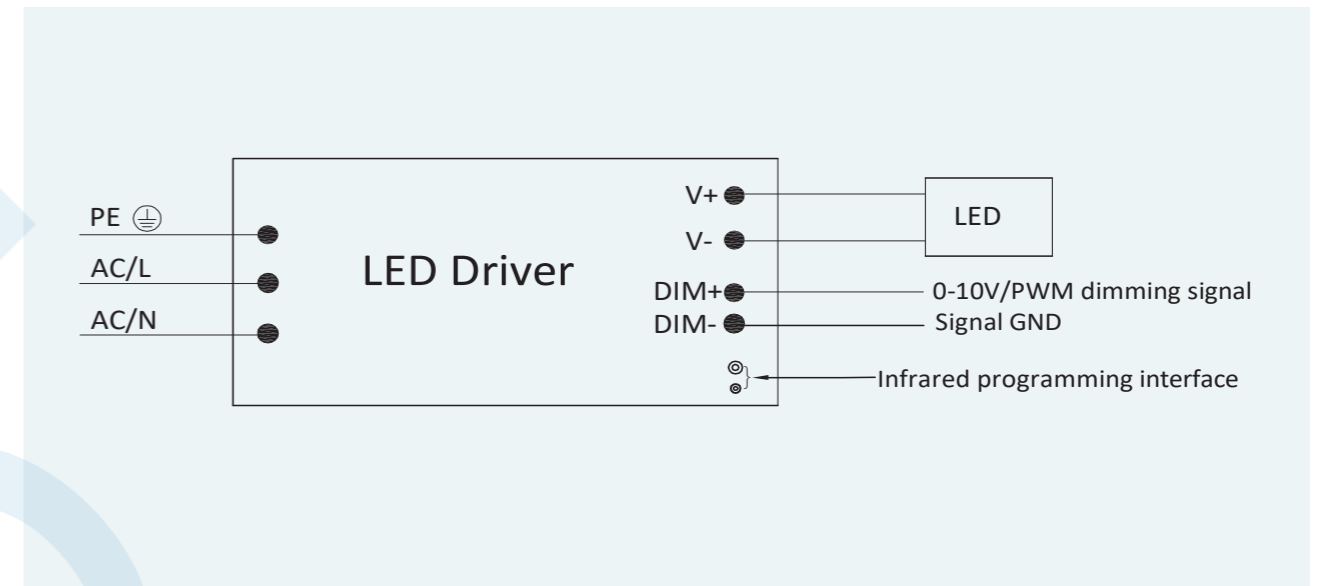
## Specification

Model	MSP-20K-SURGE	
Application system	Single Phase power supply Protection level D	
Operating voltage U0	100-277VAC 50/60Hz	
Maximum continuous	320VAC, 50/60Hz	
Level of voltage protect Up	L-N<1.2KV; L/N-PE<1.5KV	
Nominal discharge Current In	10kA (8/20us)	
Maximum discharge Current Imax	20kA (8/20us)	
Rated current	10A	
Response speed ta	L-N:25ns; L/N-PE:100ns	
Applicable temperature	-40~+70°C	
Standards complied	Conform to UL 1449 ( Class I ) ; GB18802.1 ; EN61643-11	
Dimension	62*35*36 (L*W*H) mm	
Sectional area of mounting	3x1.0 mm <sup>2</sup>	
LED indication function	SPD working Normal	SPD Failure
	Turn On	Turn Off

# Intelligent Control

Intelligent control suitable for LDP, LUP, LCP, LHP Series (M&R model) .

## Intelligent Control Interface



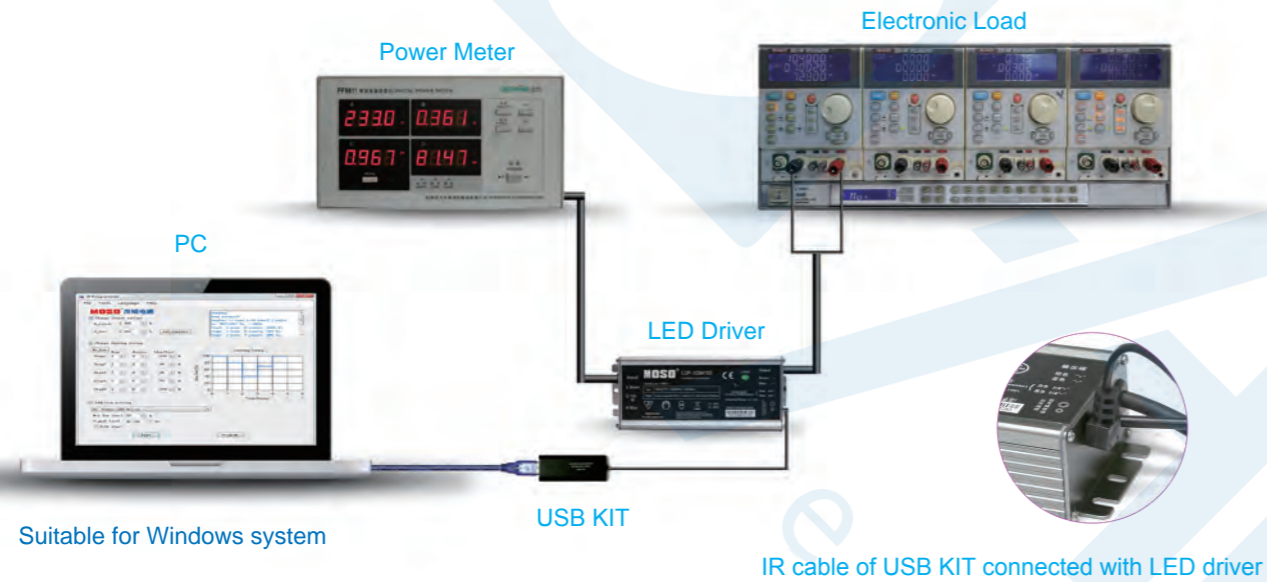
## Configure Output Current Via Controller



1. Inserting receiving terminal of the remote controller into the bigger hole site of side plate of the power supply, shown as the left picture.
2. First, press the key "ON" to unlock, then press the function key to adjust current what you need within 10S.  
Operation instruction:  
  - ✘ 10%-100% : Different rate of maximum output current.
  - ✘ +, - : Current fine tuned-keys, every step is 1%.
  - ✘ ON : The key of opening the controller.
  - ✘ OFF : The key of setting the minimum current.
  - ✘ SET : Reserved key, no function by now.

Warning: Please do not continuously press "+" to avoid the over power protection and unstable output.

# Programming Operation Guide

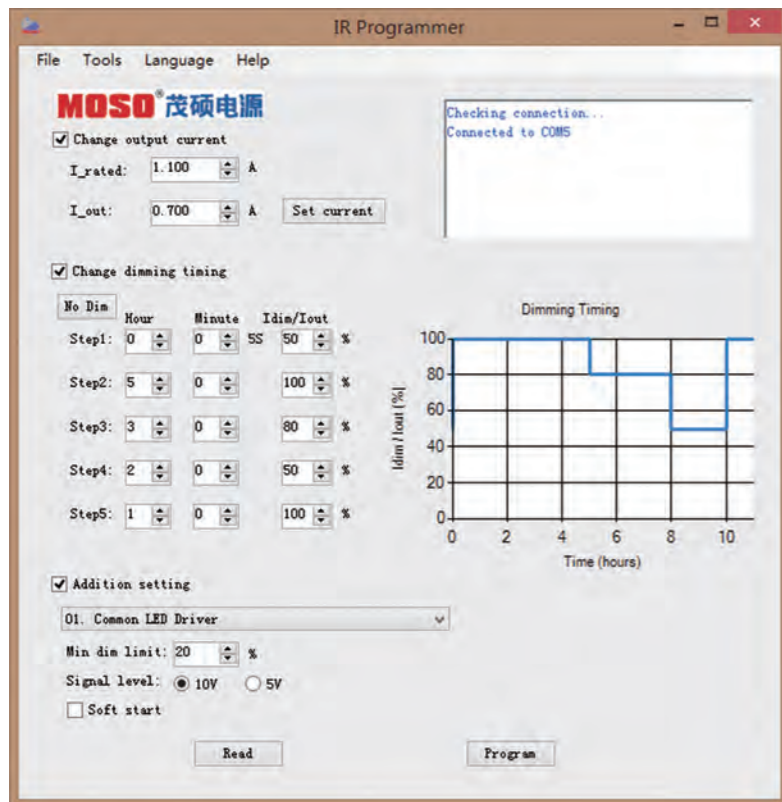


# Off-line Programming

User-friendly connection of programming without necessary to power on device(suitable for X6, XCP, PHC, STN Series).



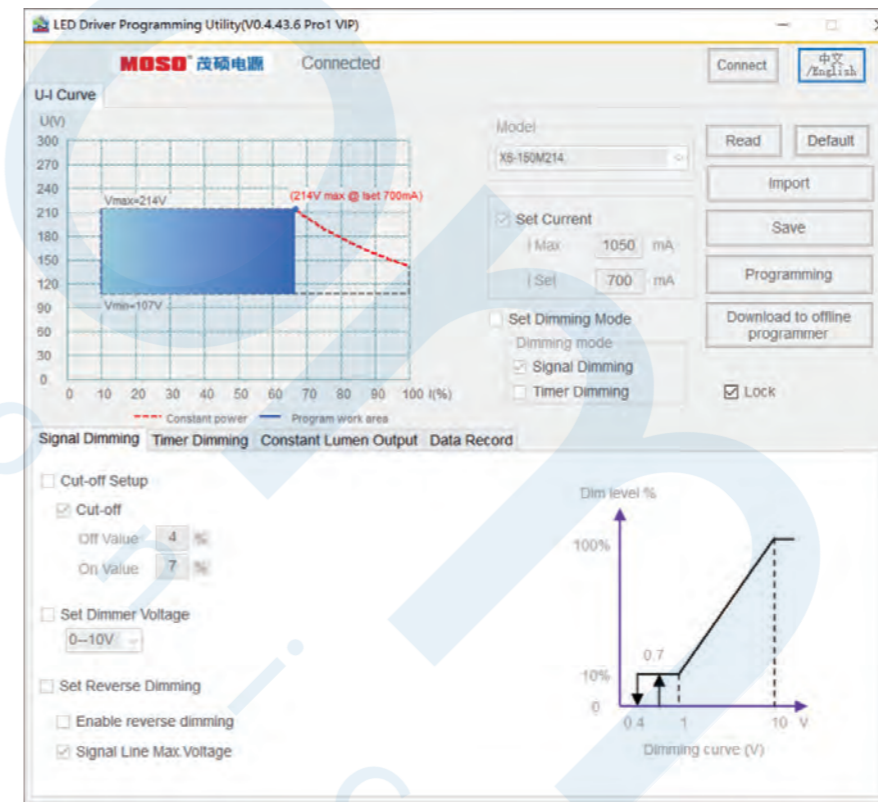
# Software Operation Guide



In both Chinese and English interface.

- 1) Change output current;
- 2) Change dimming timing;
- 3) Addition setting  
Set min. dim value;  
Set signal level can be 5V or 10V;  
Set soft start;
- 4) Read setting.

# Software Operation Guide



- Visual programming
- Set output current;
  - Read highest historical temperature;
  - Set Timer dimming, up to 7 phases;
  - Set output lumen compensation;
  - Set dimming level and PWM signal.

# Global Distributors

Country	Distributor	Tel	Website
Argentina	Arrow Argentina	+ 54-11-53656950	www.arrow.com
ASEAN	Arrow Components (M) Sdn Bhd	+604 222 6186 Ext 52186/ G14	www.arrow.com
ASEAN	Future Electronics	+604 2912 112	www.futurelightingsolutions.com
Brazil	Future Electronics Brazil	+55 -11- 23137900	www.futureelectronics.com
Brazil	Alphatech	+55-11-29763433	www.alphatech.com.br
Hong Kong	PEGASUS Electronics	+(852) 2153 8686	www.pgsel.com
India	SEMICONIC DEVICES PVT. LTD	+9540012160	www.semiconic.com
India	Kevin Electrochem	+ 91 98190 71533	www.kevinelectrochem.com/aboutKevin.aspx
Italy	Welt Electronic Spa	+39 055 302 631	www.weltelecronic.it
Mexico	Pablo S. Hatchett	+ 52-33-15241514	www.hagoledlighting.com
Portugal	INELEC, S.A.	+ 34 91 726 35 07	www.inelec.net
Russia	Intech Lighting (Group of Macro companies)	+7 (812) 370 60 70	www.intech-light.ru
Spain	INELEC, S.A.	+ 34 91 726 35 07	www.inelec.net
Poland	MPL Power Elektro SP.z.o.o.	+48 324400950	www.mplpower.pl
the Netherlands Belgium	Alcom Electronics B.V.	+31(0)102882500 +32 (0)34583033	www.alcom.nl www.alcom.be
Turkey	ISIKLAR LED	+90 216 445 70 03	www.isiklarled.com
Turkey	PEGASUS Elektronik	+90 212 322 71 00	www.pgsel.com
USA	Component Distributors, Inc.	+1 303 357 2732	www.cdiweb.com
USA	NRC Electronics, Inc.	+1 561 241 8600	www.nrcelectronics.com