



## EC.8 – 0.8 mm SMT Edge Card Connector

### Easy-to-use, HighSpeed, compact

ept expands its connector selection with a versatile 0.8 mm pitch solution. The EC.8 connector is built for speed: Compared to traditional connectors the EC.8 is made up of less components. This reduces changes in diameter and direction as well as reflections of the signal - the application receives quick, high integrity signals, at transfer speeds of up to 28 Gbps.

The edge card technology excels in the areas of data transfer and signal integrity. Well thought out features increase usability. Nothing stands in the way of its implementation into your HighSpeed applications.

For more information please visit [www.ept.de/EC8](http://www.ept.de/EC8)

### Key Features:

- edge card connector
- 20 to 200 pins
- 28 Gbps transfer rate
- 3.2 A operational current
- 500 mating cycles
- packed in Tape & Reel, Tray
- 1.60 mm edge card thickness

### Applications:

- embedded
- industrial automation
- datacom

### Termination



SMT

### Application



High Density



Perpendicular



Edge Card Connector

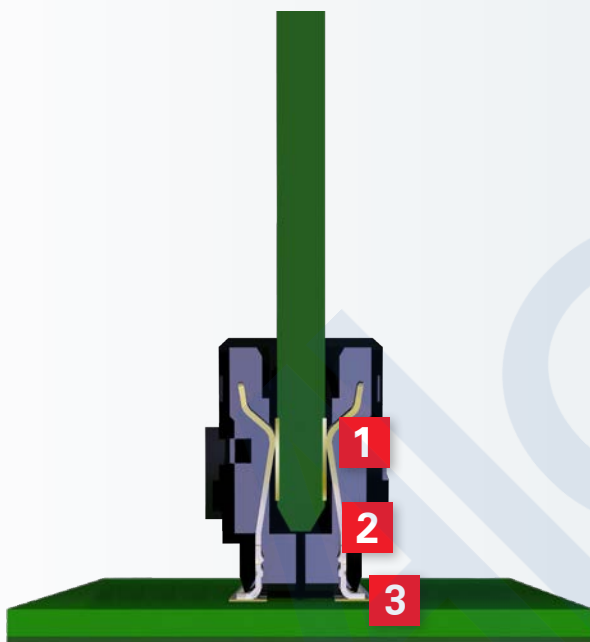


HighSpeed

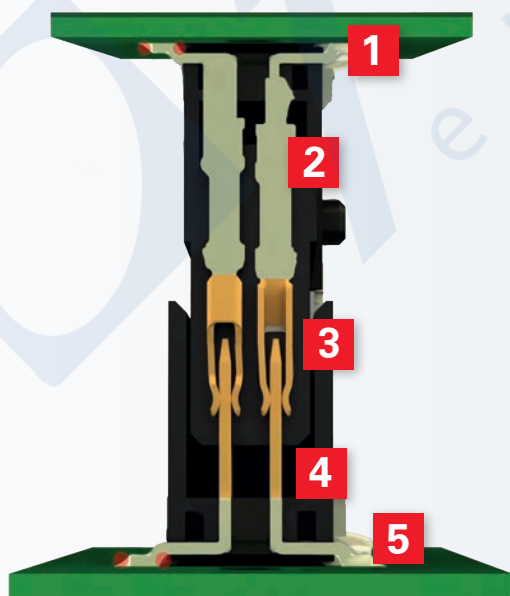


## EC.8 – Edge Card Connector vs. Connector Pair

The edge card connector enables a direct connection to the printed circuit board without the necessity of a connector mate. This results in fewer points of contact and junctions in comparison to a female-male connection setup. The operational current and transfer rate properties are therefore positively affected.

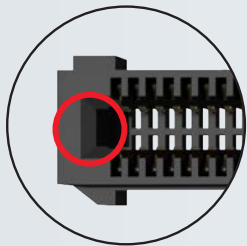


<b>R</b> Contact junction	[1]
<b>R</b> Contact	[2]
<b>R</b> PCB connection	[3]

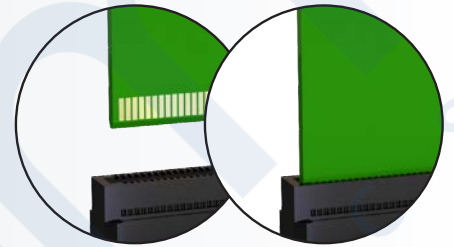


<b>R</b> PCB connection	[1]
<b>R</b> Contact	[2]
<b>R</b> Contact junction	[3]
<b>R</b> Contact	[4]
<b>R</b> PCB connection	[5]

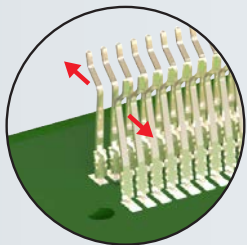
## Advantages of the EC.8 Edge Card Connector



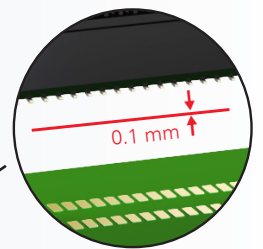
**insertion chamfer**  
for compensation of  
misalignment and  
angular inclination



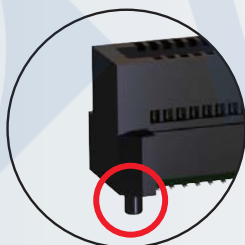
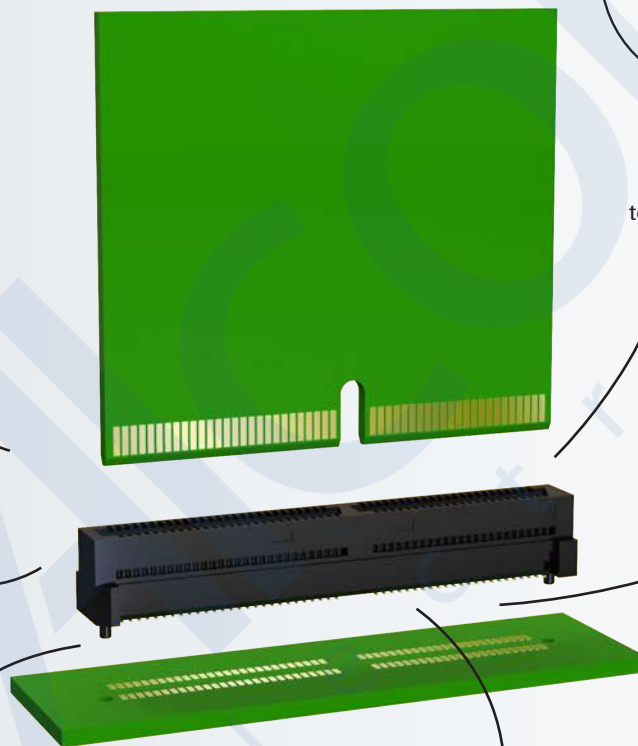
**acoustic and  
haptic feedback**  
to secure an accurate connection  
with the edge card



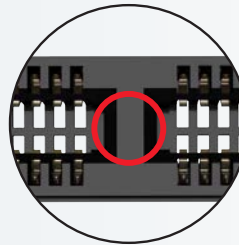
**tolerance compensation**  
allows for easy plugging and  
card thickness deviation



**coplanarity**  
soldering under controlled  
process conditions



**misalignment pins**  
prevents misalignment  
on the board



**coding key**  
anti-twist safeguard and  
tolerance compensation for  
the edge card