

InRouter600-S Series

Entry-level Industrial LTE Router

Stable, Easy-to-Use and Secure

IoT/M2M solutions are changing the way of operation of unattended devices, e.g. ATMs, EV charging stations, self-service lockers, interactive kiosks, digital signage, smart medical devices, etc. By networking distributed unattended devices, operators can realize real-time monitoring, central asset management, data collection, preventive maintenance and more, bringing operation efficiencies to new levels and new service modes possible.

The InRouter600-S industrial LTE router provides a stable, easy-to-use and secure IoT/M2M networking solution for unattended devices. The product features high-reliability multi-layer link detection and recovery mechanism to maintain stable communications. The full range of industrial installation and management tools cover every step from field installation to configuration and daily maintenance, making large network deployment and management fast and easy.

With InHand Device Touch, the InRouter600-S enables remote maintenance of field devices, which will largely save the maintenance costs.



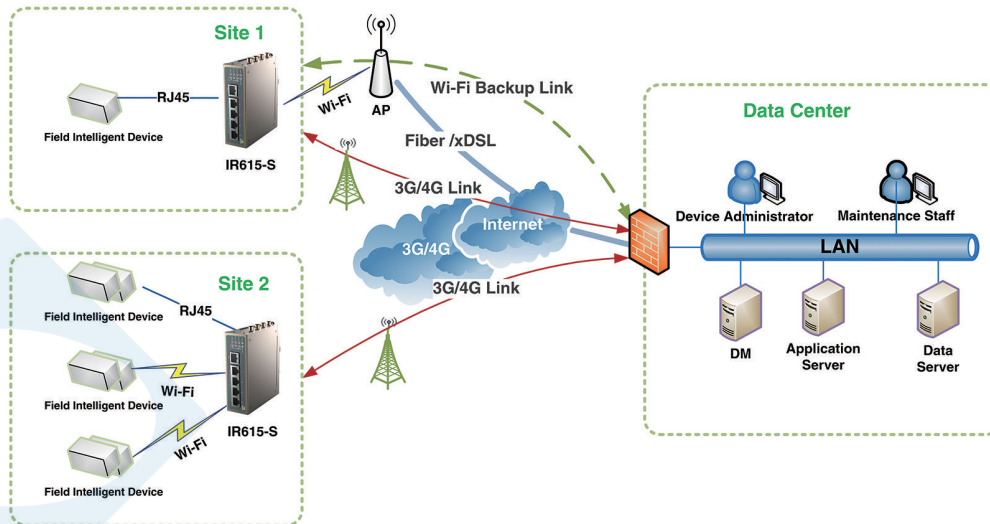
InHand Networks

3900 Jermantown Rd., Suite 150, Fairfax, VA 22030, USA
 T: +1 (703) 348-2988
info@inhandnetworks.com
www.inhandnetworks.com



Singel 3 | B-2550 Kontich | Belgium | Tel. +32 (0)3 458 30 33 | info@alcom.be | www.alcom.be
 Rivium 1e straat 52 | 2909 LE Capelle aan den IJssel | The Netherlands | Tel. +31 (0)10 288 25 00 | info@alcom.nl | www.alcom.nl

Networking Scheme



Features and Advantages

Reliable and Stable Communications

- + High-reliability multi-layer auto link detection and recovery mechanism, maintain stable communications without human intervention
- + Mutual link backup between Ethernet, 3G/4G and WiFi, auto switch to backup link when main link fails
- + High device availability with embedded soft and hardware watchdogs
- + VRRP for mutual backup between wired and wireless routers

Fast Network Deployment

- + Ethernet, 3G/4G LTE and Wi-Fi, for selection according to conditions of the field sites
- + Smoothly switch to 2.5G network when under no or poor 4G/3G coverage
- + Wi-Fi 802.11b/g/n, AP, client and WDS modes
- + DIN rail mounting, lug hanging, wall mounting, etc., fitting various installation environments

Effective Data Security

- + Encrypted VPN transmission: IPSec VPN, L2TP, PPTP, GRE, Open VPN and CA certificate
- + Firewall protections: SPI, DDoS defense, filter multicast/Ping packet, port mapping, virtual IP mapping, content URL filter, ACL, IP-MAC binding, etc.

Rich and Easy-to-Use Management Tools

- + Multiple configuration methods: CLI, Web and network management platforms
- + Simple and logical Web configuration interface
- + APN auto-negotiation, requiring no user configuration on simple public networks
- + InHand Device Manager for efficient central network management
- + SNMPv1, v2c, v3, SNMP TRAP, for SNMP standard network management platforms

Remote Maintenance

- + Establishes VPN tunnel to field controllers, e.g. PLCs, for remote debugging, diagnosing, and up and downloading of software of field controllers, enabling remote maintenance without traveling onsite

Resistant to Environment Interferences

- + Aluminum alloy shell, IP30
- + EMC class 3
- + 1.5KV isolation protection on Ethernet port
- + Wide operating temperature: -20°C~+70°C
- + Wide voltage input: DC9~26V

InRouter611-S / 615-S



Scan

to select an IR600-S model