

# InConnect Service

Simple and Secure Remote Connection



InHand Networks

[www.inhandnetworks.com](http://www.inhandnetworks.com)



# CONTENTS



- 01 What Is InConnect
- 02 Compatible Hardware – InHand Routers/Gateways
- 03 Success Stories
- 04 Pricing



# Challenges in managing distributed business sites



## Onsite management

- High costs for regular maintenance
- Delayed troubleshooting
- Time and energy consuming



## Remote management

- IT expertise required
- Security and reliability concerns
- Hardware and software compatibility
- Inefficiency of operation & maintenance



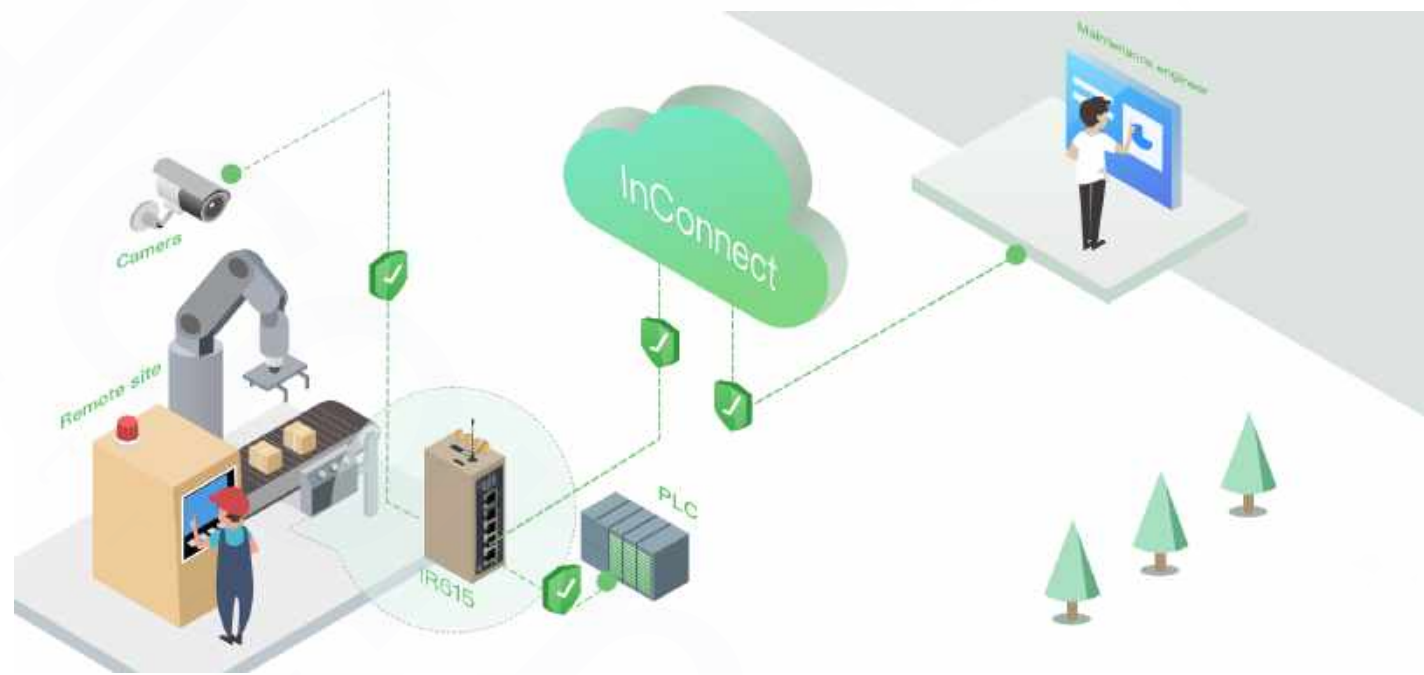
# onnect?

simple service which builds  
networks for your IoT

connect to remote sites via

s (PLCs, HMIs) can talk to

in the secure private network



# InConnect Work?

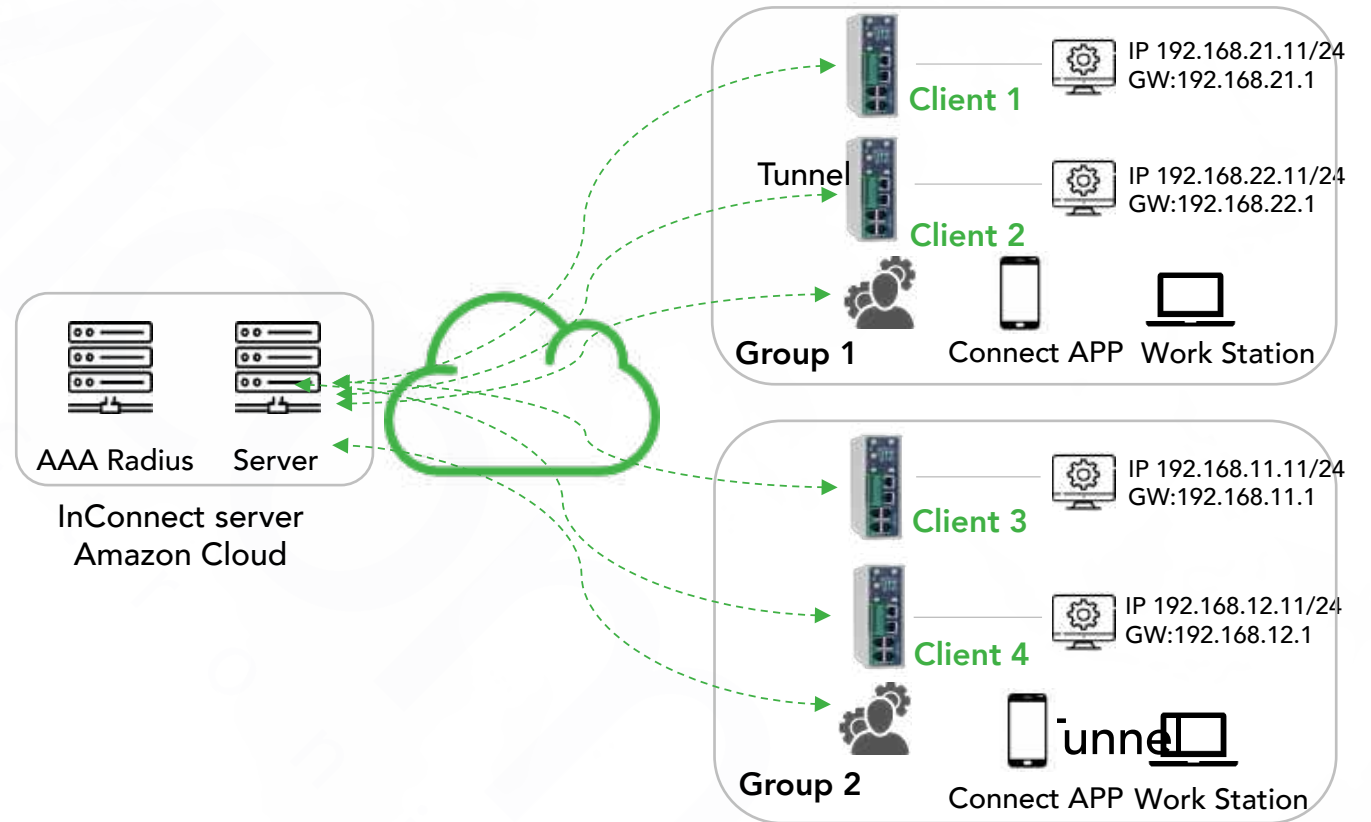
ter connects field devices to

devices on PCs or mobile

VPN tunnels anytime from

line (M2M) remote

ection status and data usage



# Why InConnect?

"One-stop" service  
hardware + cloud



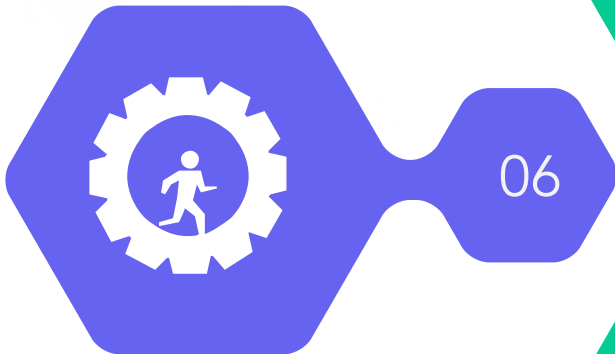
01

Hassle-free plug & play



02

operation  
maintenance



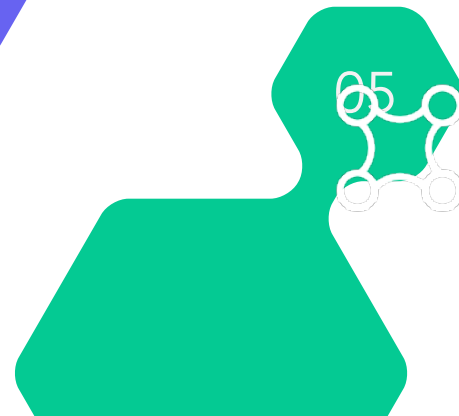
06

Management in  
cloud



03

scalable for IoT



05

Advanced security



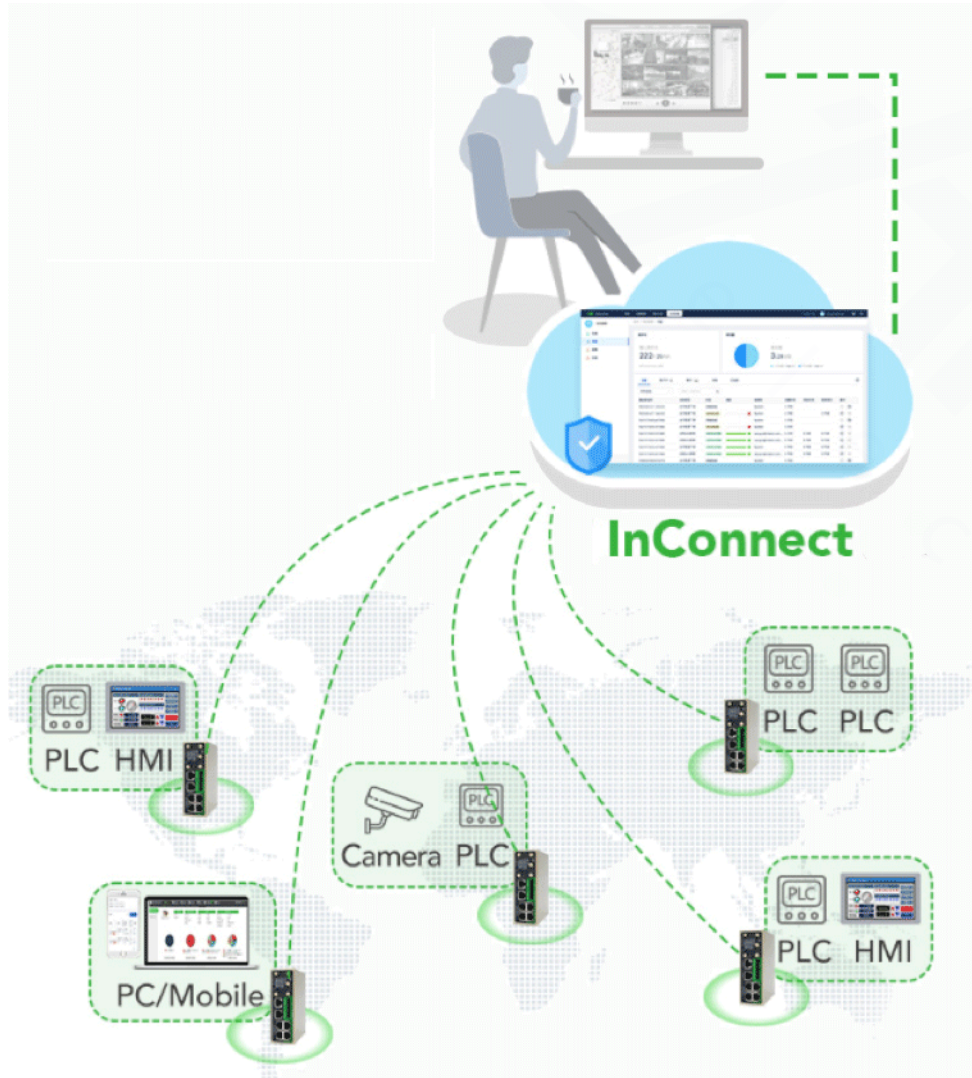
04

## What Is InConnect

- Challenges in managing distributed business sites
- What is InConnect?
- Why InConnect?

# “One-stop” connection:

## Cloud + InHand’s routers/gateways + client software



- Networking of distributed sites
- Remote office
- Connectivity between Devices
- Highly secure encryption

# Multiple Remote Connections

1 User-to-Device



2 Site-to-Site



3 Device-to-Device



4 Multiple-to-Multiple





# g & Play

3:

Connect account (<https://ics.inhandnetworks.com/>)

Connect to InHand's routers / gateways

Connect VPN client and set up connection (very simple!

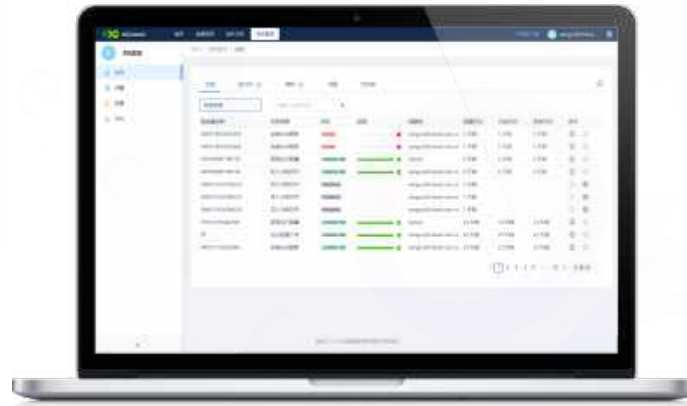
completed!

For more information, please refer to *InHand InConnect Cloud*

*Manual.*



# Device Management in the Cloud



- Online tracking

Name	Type	Status	Program	Created By	Created Time	Last Time	Update Time
004-001	Security Appliance	ONLINE	System	System	2020-04-01 10:00:00	2020-04-01 10:00:00	2020-04-01 10:00:00
004-002	Security Appliance	ONLINE	System	System	2020-04-01 10:00:00	2020-04-01 10:00:00	2020-04-01 10:00:00
004-003	Security Appliance	ONLINE	System	System	2020-04-01 10:00:00	2020-04-01 10:00:00	2020-04-01 10:00:00
004-004	Security Appliance	ONLINE	System	System	2020-04-01 10:00:00	2020-04-01 10:00:00	2020-04-01 10:00:00
004-005	Security Appliance	ONLINE	System	System	2020-04-01 10:00:00	2020-04-01 10:00:00	2020-04-01 10:00:00
004-006	Security Appliance	ONLINE	System	System	2020-04-01 10:00:00	2020-04-01 10:00:00	2020-04-01 10:00:00
004-007	Security Appliance	ONLINE	System	System	2020-04-01 10:00:00	2020-04-01 10:00:00	2020-04-01 10:00:00
004-008	Security Appliance	ONLINE	System	System	2020-04-01 10:00:00	2020-04-01 10:00:00	2020-04-01 10:00:00
004-009	Security Appliance	ONLINE	System	System	2020-04-01 10:00:00	2020-04-01 10:00:00	2020-04-01 10:00:00
004-010	Security Appliance	ONLINE	System	System	2020-04-01 10:00:00	2020-04-01 10:00:00	2020-04-01 10:00:00

monitoring  
gateway configurations  
gateway firmware

InHand Connect Service

# Reliable Service

and deployment

Industrial routers & gateways with CA

ion

el with SHA265 and AES265 encryption

obile apps need CA authentication



# Available for IoT

remote sites to your account as business  
to **4000** sites accessible)

cloud service, flexibly scale up bandwidth,  
features, memory and storage

industrial automation, smart manufacturing,

security, smart healthcare, utilities,

services, etc.



# Traditional VPN vs. InConnect

## Traditional VPN

## InConnect

Complex and time-consuming; extensive IT knowledge required

Easy deployment and configuration, little technology required

Public static IP address and VPN Server

Fast network building with AWS cloud service

User-to-device

User-to-device and device-to-device

Data center exposed in public networks, security settings required

Secure deployment center and encrypted data transmission

Public IP and broadband fees, VPN devices in the center

No fees for network building; charged by data usage, lower investment

Number of connected sites subject to VPN

Flexibly scalable

Remote management of routers, firmware upgrade, configuration update; data statistics, device monitoring

## Compatible Hardware

Supports connection of InRouter600-S, InRouter900, InGateway900, InVehicle G710 series products

## Compatible InHand Devices

LAN/WAN		WIFI	GPS	Serial Port	I/O Port	CanBus	Coverage	Certification
Dual SIM	2* 10/100Mbps WAN/LAN						Global	CE, FCC, UL, PTCRB, CCC, Verizon Wireless, AT&T, E-MARK, IC, IMDA, RCM
Single SIM	1*10/100Mbps LAN/WAN	802.11b/g/n		✓			Global	CE, FCC, PTCRB, IC, RCM, SDPPI, AT&T, T-Mobile, Verizon Wireless
Dual SIM	1*10/100Mbps WAN 4*10/100Mbps LAN	802.11b/g/n		✓			Global	CE, FCC, PTCRB, IC, IMDA, RCM, Verizon, AT&T, T-Mobile, Class I Division 2
Dual SIM	1* 10/100Mbps WAN/LAN 4*10/100Mbps WAN/LAN	802.11b/g/n	✓	✓	✓		Global	CE, FCC, UL, PTCRB, CCC, Verizon Wireless, AT&T
Dual SIM	2*10/100/1000Mbps WAN/LAN or 2*LAN	802.11 ac/a/b/g/n	✓	✓	✓		Global	CE, IC, FCC, PTCRB, Verizon Wireless, AT&T
Dual SIM	4*10/100/1000Mbps RJ45	802.11ac/a/b/g/n	✓	✓	✓	✓	Global	CE, FCC, IC, RCM, PTCRB, IMDA

# InRouter600-S Industrial LTE Router

InRouter611-S / InRouter615-S



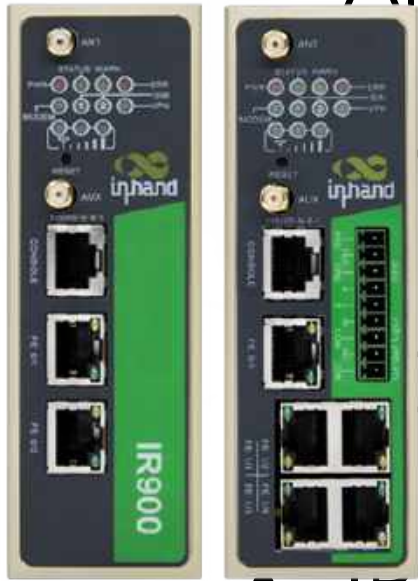
- All industrial-grade design, EMC level 3
- 1/5\*ETH port, 1\*serial port
- 4G LTE/3G, Ethernet, Wi-Fi
- IPsec VPN, DMVPN, L2TP, OPEN VPN



-     for installation, wall/panel

# InRouter900 High-level Industrial Router

InRouter912 / InRouter915



- All industrial-grade design, DIN rail installation, EMI/RFI shielding, 100% RoHS
- 5\* Ethernet port, 2\* serial port, 2\*I/O
- 4G LTE/3G, Ethernet, Wi-Fi
- IPsec VPN, DMVPN, L2TP, OPEN VPN



Mobile n



AWS Greengrass



# InGateway900 Edge Computing Gateway

IG902-B / IG902-H

- All industrial-grade design, DIN rail/wall mounting, E



\*Ethernet port, 2\*serial port, 2\*I/O, 2\*industrial pro

4G LTE, 3G, ADSL, Ethernet, Wi-Fi



: VPN, CA, OPEN VPN

- Python programmable
- Multiple industrial protocols supported: Modbus TCP

RTU, OPC UA,

PROFIBUS-DP, EtherCAT, I



at&t verizon  
CC-Linux, PPI



AWS Greengrass

t irrigation

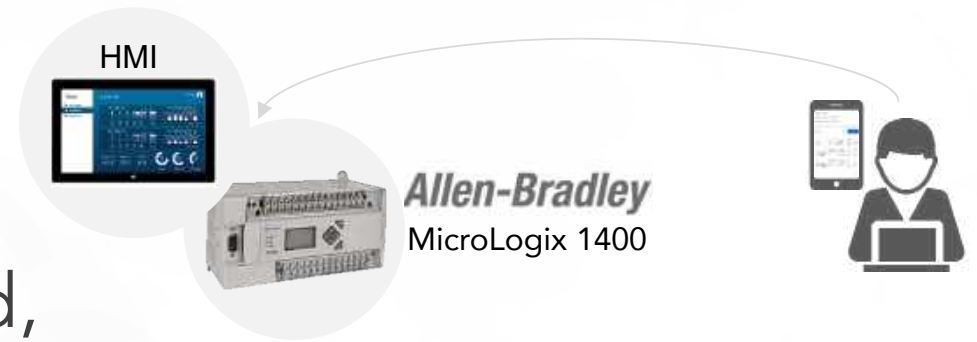
remote control of golf course irrigation

d irrigation that is prompt, demand-based,

and water-saving

ment in management, costs reduction and

enhancement



Golf Pump Station

erial LTE router IP815 + InConnect cloud

# Solution: Industrial LTE router IR915 + InConnect cloud service



R915

pipelines, pumps, PLC, routers, business servers, etc.

to the Internet via cellular LTE 4G network or ADLS,

- InConnect cloud service

- Terminal devices installed with HMI systems connect to the cloud via clients, users can remotely control the irrigation

# Smart control system for valves of oil wells

es:

y detection in advance, user reminder for targeted

ance

wntime and continuous production

ustrial LTE router IR615-S + InConnect cloud service



Valve



PLC

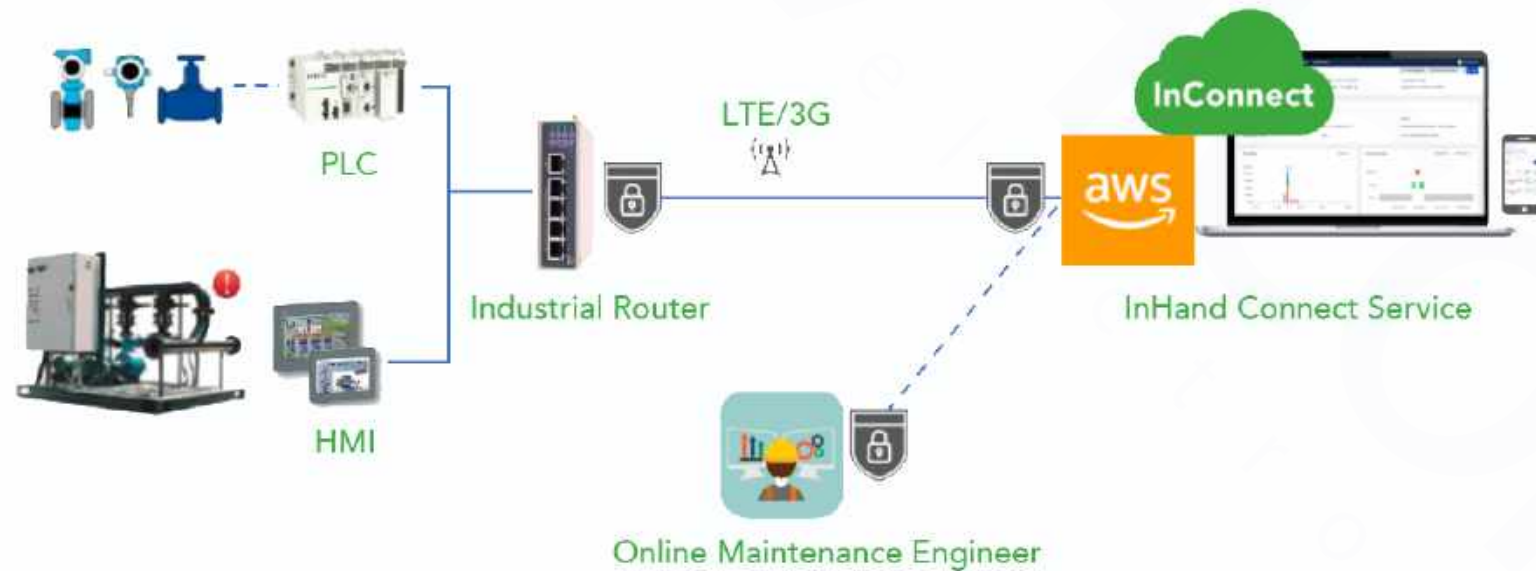


HMI



Maintenance Engineer

# Solution: Industrial LTE router IR615-S + InConnect cloud service



## InHand IR615-S router

- PLCs, HMIs and other smart devices are connected to IR615-S via LAN
- OpenVPN tunnel between Industrial Router and InConnect

## InConnect cloud service

- Onsite control systems access InConnect anytime anywhere
- Online test, variable tracking

Service fee

**\$2.5/GB**

by data usage in the cloud

Try now!

Address: <https://ics.inhandnetwork>



from April 1 to June 30

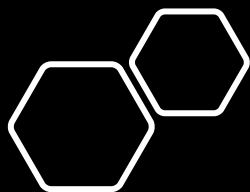




is a global leader of Industrial IoT, with a record of tremendous success following our inception in 2001.

World-class partners and customers with industrial M2M routers, gateways, industrial Ethernet computers and IoT management platforms. We provide IoT solutions for various verticals including Industrial Automation, Remote Machine Monitoring, Smart Vending, Smart City, Retail, and more.

Recognized as an AWS Select Technology Partner, Schneider Electric TPP Certified Technology Provider, and Encompass Product Partner in Asia-Pacific, InHand Networks defines industrial IoT.

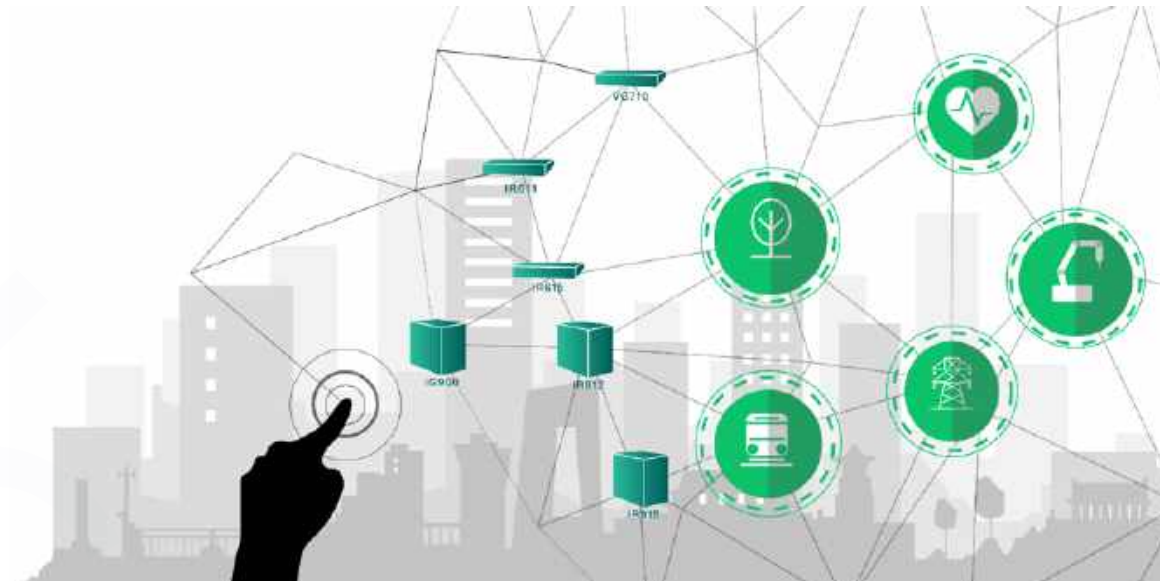


# InConnect

Facilitating Informationization &  
Digital Transformation

InHand Networks

[www.inhandnetworks.com](http://www.inhandnetworks.com)



Singel 3 | B-2550 Kontich | Belgium | Tel. +32 (0)3 458 30 33  
info@alcom.be | www.alcom.be  
Rivium 1e straat 52 | 2909 LE Capelle aan den IJssel | The Netherlands  
Tel. +31 (0)10 288 25 00 | info@alcom.nl | www.alcom.nl