



HERCULUX

LED Optics

Kirin Optical Platform

CHENGDU HERCULUX PHOTOELECTRIC TECHNOLOGY CO., LTD.

成都恒坤光电科技有限公司



HercuLux

Founding background: Focus on Optics, Optical Molds, and Optical injection molding for more than 10 years

CAPITAL: USD 5 million

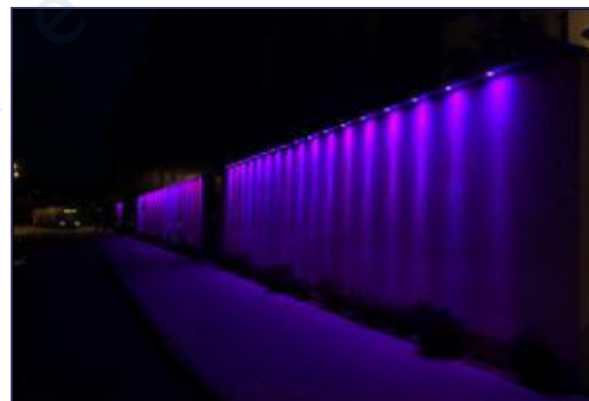
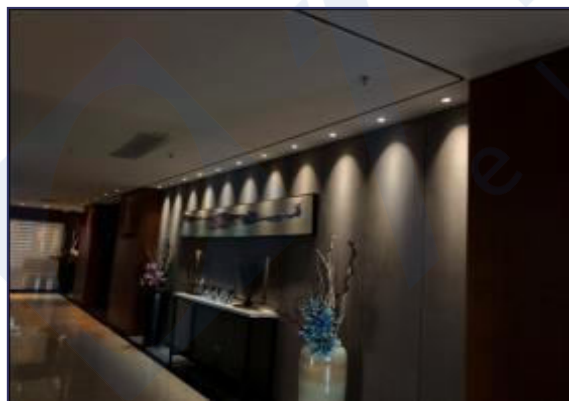
Main business: LED Optics / UV Optics etc

Application:

Indoor lighting like shopping malls, hotels, offices, homes, etc

Outdoor lighting like roads and advertisements, etc

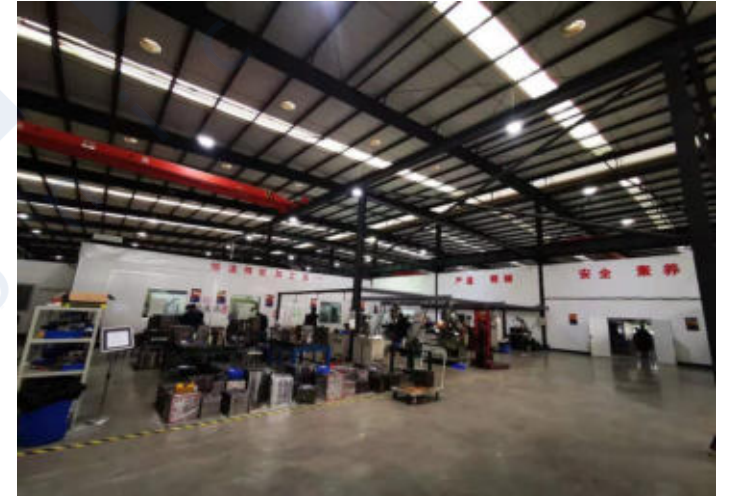
LED car lights, stage lights, UV exposure machines, UV printing, etc



HercuLux Park 20000 square meters



Constant temperature processing mold room



Over 120 injection machines of different tonnage



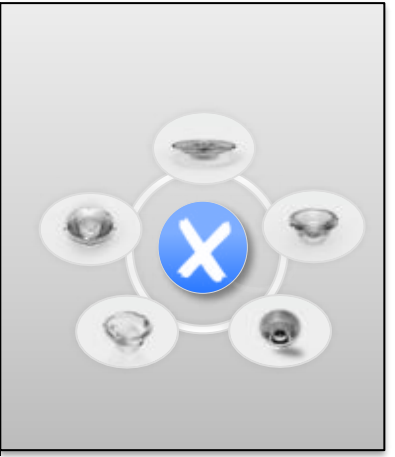
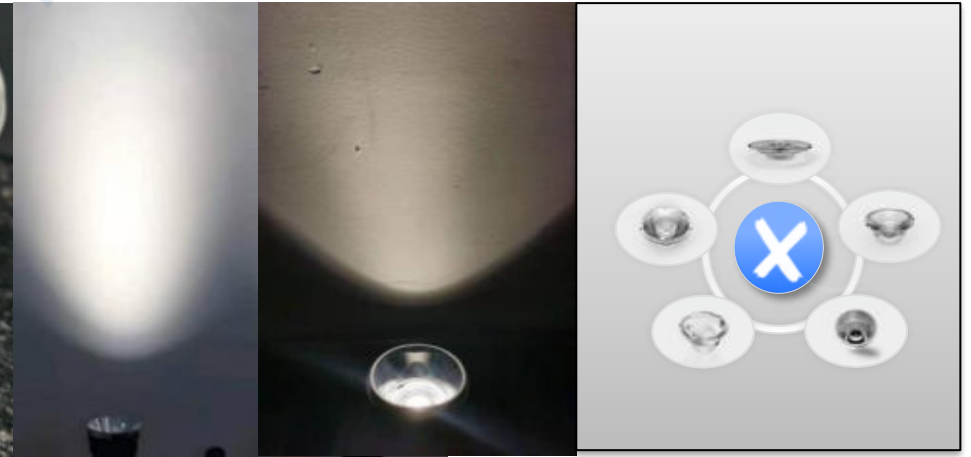
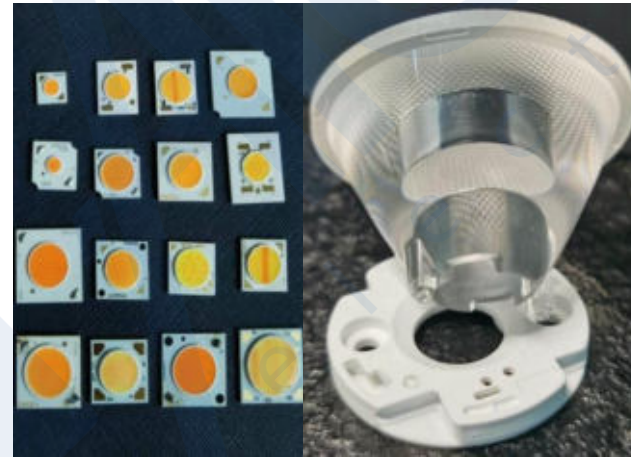
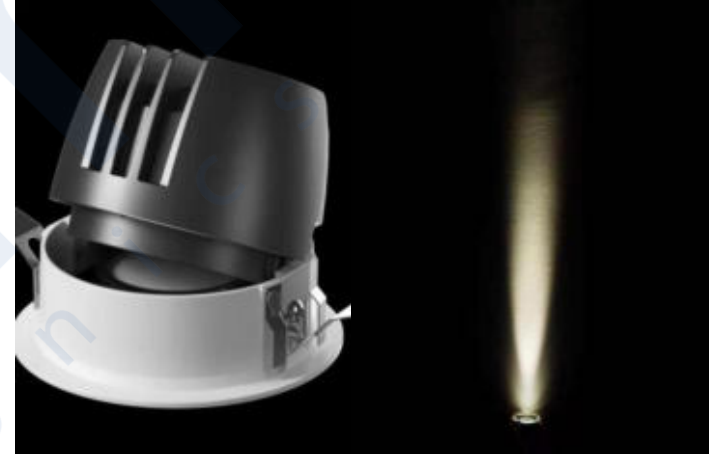
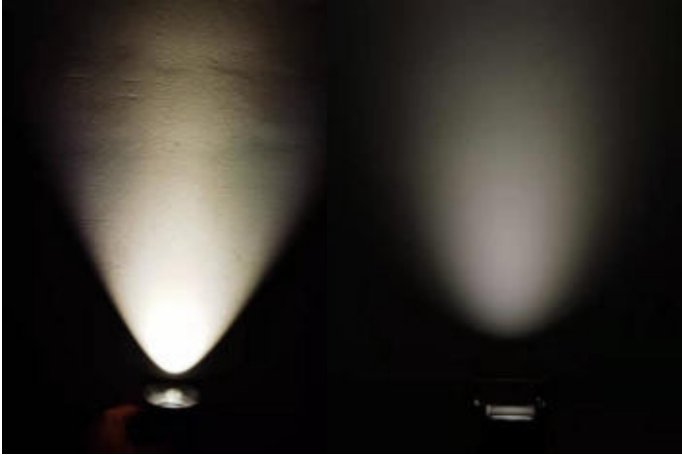
100,000 dustproof level Coating workshop

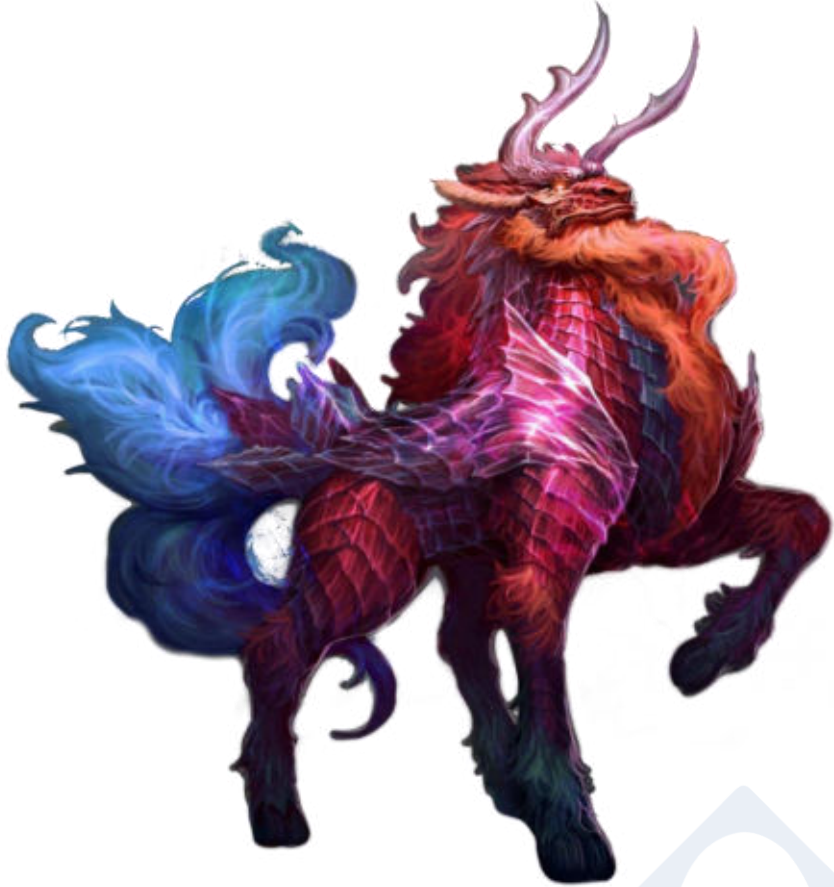




As a lighting manufacturer, do you hear such a voice?

As a lighting manufacturer, do you hear such a voice?





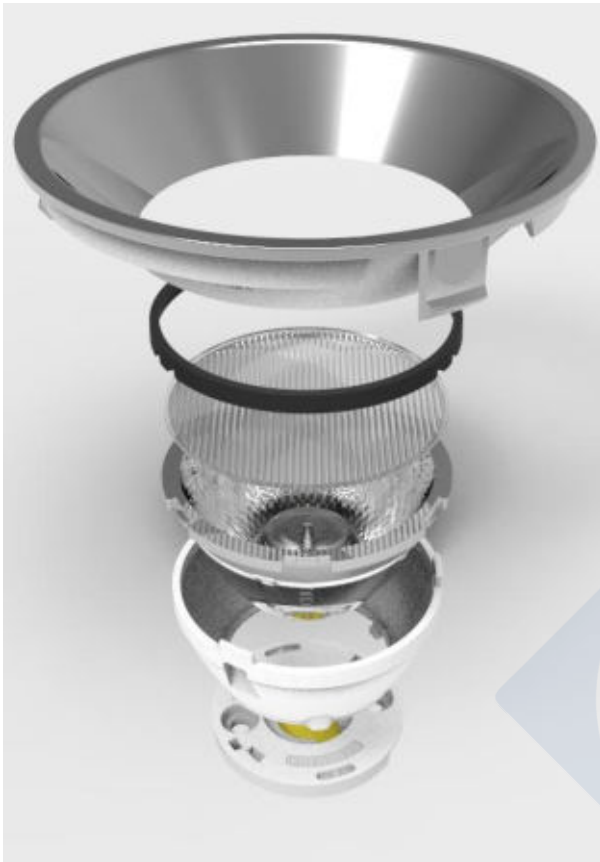
HercuLux Kirin Platform?

Kirin is a Chinese traditional beast

Where Kirin goes, auspiciousness follows.
Kirin combines lion head, antlers, tiger eyes, moose body, dragon scales, and oxtail
Advantages of various beasts are concentrated in one!

Different series on the HercuLux Kirin Optical platform also have their own advantages:

Kirin Platform

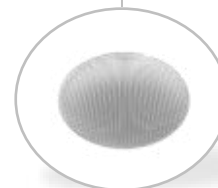


COB holder

Lens holder

Lighter filter

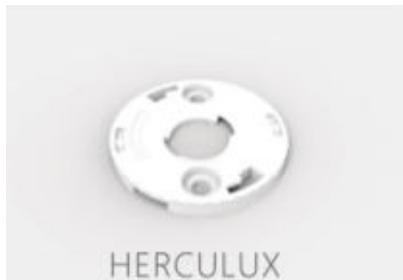
Light hood



COB holder of Kirin Platform

1. Can buckle with the lens holder
2. Same COB holder can match different COB Substrate size and COB brand
3. Pin to Pin with BJB solderless holder and other ZHAGA standard holder

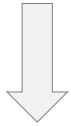
Same outer dimensions
Same screw positioning
Same buckle position



COB holder of Kirin Platform



COB Holder Type 1
Outer Size 24mm



Suitable For
Optics Size

25mm 30mm 35mm



COB Holder Type 2
Outer Size 35mm



Suitable For
Optics Size

25mm 30mm 35mm 45mm
50mm 55mm 62mm 68mm



COB Holder Type 3
Outer Size 50mm



Suitable For
Optics Size







75mm 83mm

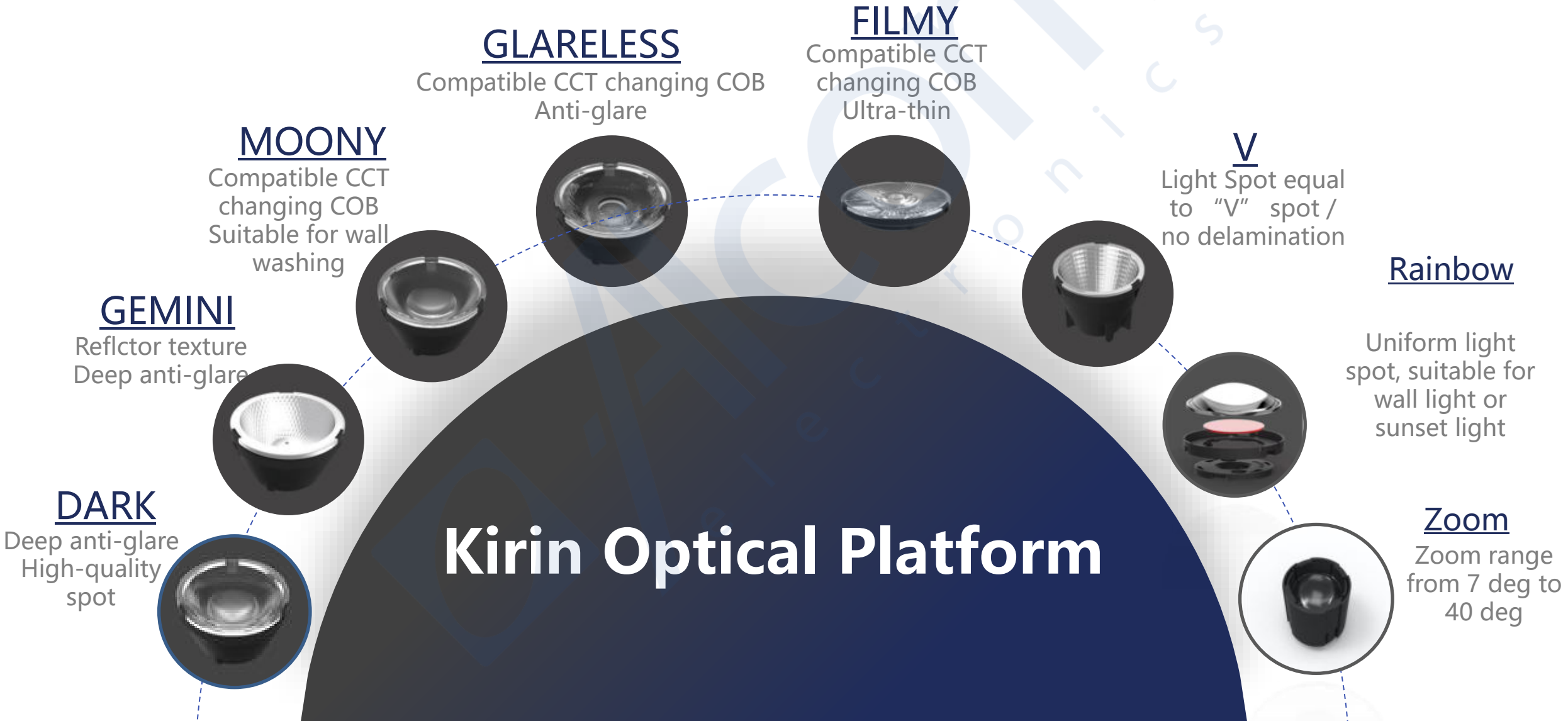
Lens holder of Kirin Platform

1. Twisting method, can be rotated with BJB solderless holder and other ZHAGA solderless holders
2. Black and white color will own different optical effect



Lens holder of Kirin Platform

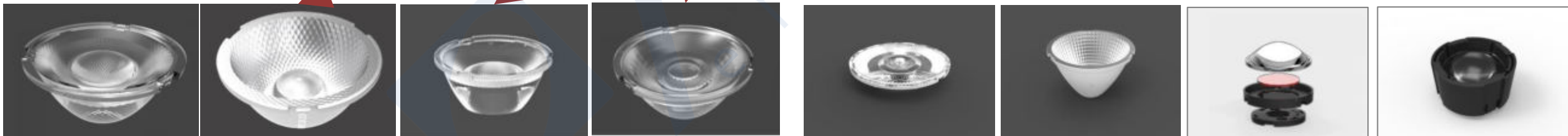
	顶棚反射系数RCC	0.70	0.70	0.50	0.50	0.30	
	墙面反射系数RW	0.50	0.30	0.50	0.30	0.30	
	地板反射系数RFC	0.20	0.20	0.20	0.20	0.20	
	房间尺寸	横向视角					
	X=2H	Y=2H	5.0	5.8	5.3	6.2	6.5
		Y=3H	4.8	5.5	5.1	5.9	6.2
		Y=4H	4.7	5.4	5.1	5.7	6.1
		Y=6H	4.6	5.3	5.0	5.6	6.0
		Y=8H	4.6	5.2	5.0	5.6	6.0
		Y=12H	4.6	5.2	5.0	5.6	6.0
X=4H	Y=2H	4.6	5.4	5.0	5.7	6.1	
	Y=3H	4.4	5.0	4.9	5.4	5.8	
	Y=4H	4.4	4.9	4.8	5.3	5.8	
	Y=6H	4.3	4.8	4.8	5.2	5.7	
	Y=8H	4.3	4.8	4.8	5.2	5.7	
	Y=12H	4.4	4.8	4.9	5.3	5.7	
X=8H	Y=4H	4.2	4.6	4.7	5.1	5.5	
	Y=6H	4.2	4.5	4.7	5.0	5.5	
	Y=8H	4.3	4.6	4.8	5.1	5.6	
	Y=12H	4.4	4.7	5.0	5.2	5.8	
X=12H	Y=4H	4.1	4.5	4.6	5.0	5.5	
	Y=6H	4.2	4.5	4.7	4.9	5.5	
	Y=8H	4.3	4.5	4.8	5.0	5.6	
不同间隔布灯时，观察者位置引起的变化							
	顶棚反射系数RCC	0.70	0.70	0.50	0.50	0.30	
	墙面反射系数RW	0.50	0.30	0.50	0.30	0.30	
	地板反射系数RFC	0.20	0.20	0.20	0.20	0.20	
	房间尺寸	横向视角					
	X=2H	Y=2H	0.4	1.3	0.7	1.6	1.9
		Y=3H	0.3	1.0	0.6	1.4	1.7
		Y=4H	0.3	1.0	0.7	1.4	1.8
		Y=6H	0.5	1.1	0.9	1.5	1.9
		Y=8H	0.6	1.2	1.0	1.6	2.0
		Y=12H	0.8	1.3	1.2	1.7	2.1
X=4H	Y=2H	0.1	0.8	0.5	1.2	1.5	
	Y=3H	0.0	0.6	0.4	1.0	1.4	
	Y=4H	0.1	0.6	0.6	1.1	1.5	
	Y=6H	0.5	1.0	1.0	1.4	1.9	
	Y=8H	0.7	1.1	1.2	1.6	2.1	
	Y=12H	1.0	1.4	1.5	1.9	2.4	
X=8H	Y=4H	0.1	0.5	0.6	1.0	1.5	
	Y=6H	0.7	1.0	1.2	1.5	2.0	
	Y=8H	1.0	1.3	1.5	1.8	2.3	
	Y=12H	1.5	1.8	2.0	2.3	2.8	
X=12H	Y=4H	0.1	0.4	0.6	0.9	1.4	
	Y=6H	0.7	1.0	1.3	1.5	2.0	
	Y=8H	1.1	1.3	1.6	1.8	2.4	
不同间隔布灯时，观察者位置引起的变化							
							
							



KIRIN OPTICAL PLATFORM

Dark | Moony | Glareless | Gemini

Same diameter Same height



Dark

Gemini

Moony

Glareless

Filmy

V

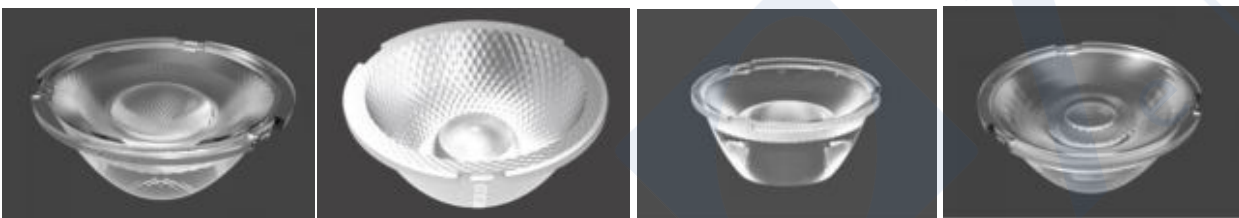
Rainbow

Zoom Module

KIRIN OPTICAL PLATFORM

Dark | Moony | Glareless | Gemini VS Filmy | V | Rainbow | Zoom

Same diameter Different height



Dark

Gemini

Moony

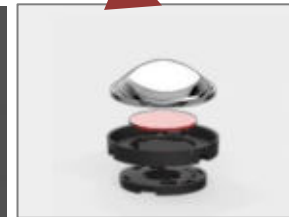
Glareless



Filmy



V



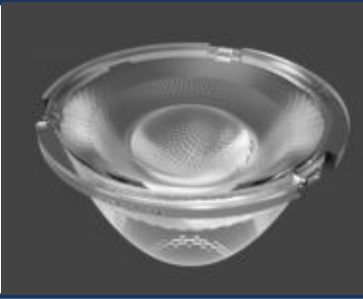
Rainbow



Zoom Module

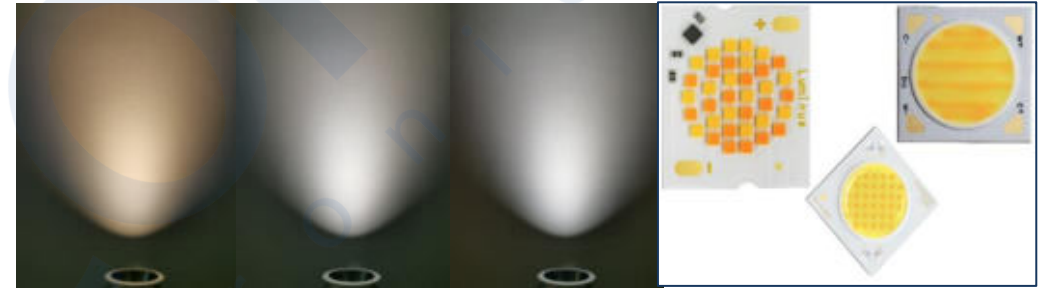
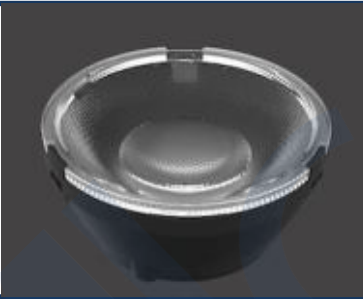
Dark

- Anti-Glare, Cross light design
- Cut off, no side spot



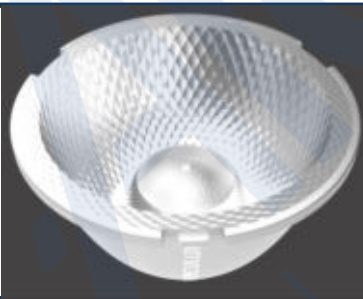
Moony

- Compatible with DTW/TW COB
- Cut off light spot



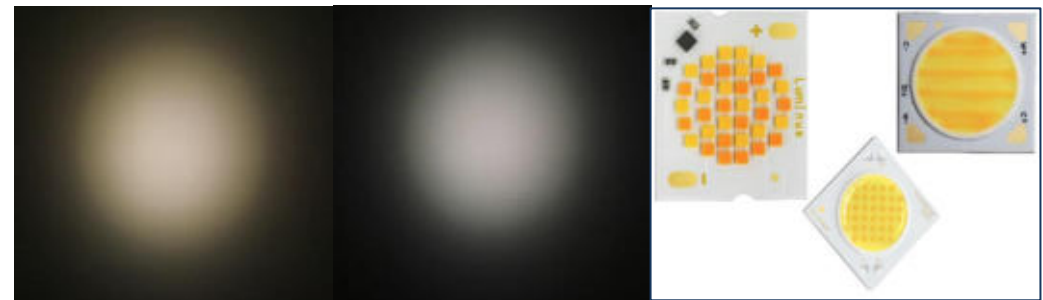
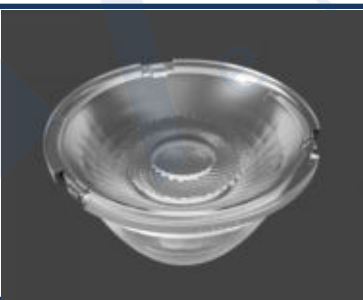
Gemini

- Reflector with lens spot
- Deep anti-glare



Glareless

- Sinking design, low dazzling effect
- Compatible with DTW/TW COB



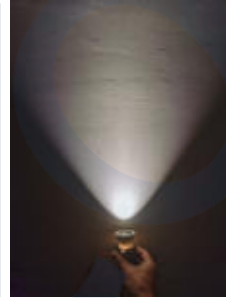
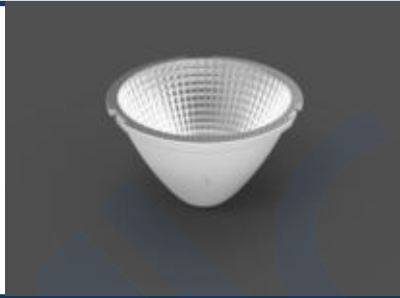
Filmy

- Ultra thin, save lamp space
- Compatible with DTW/TW COB

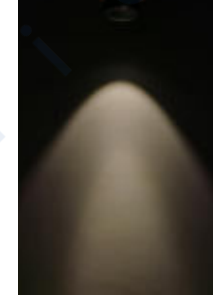


V

- Cut off V spot
- No side spot, No dark area



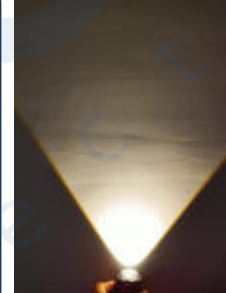
Common reflector



Herculux V series

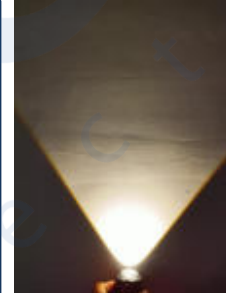
Rainbow

- Lens can match with color filter
- Cut off / Various application



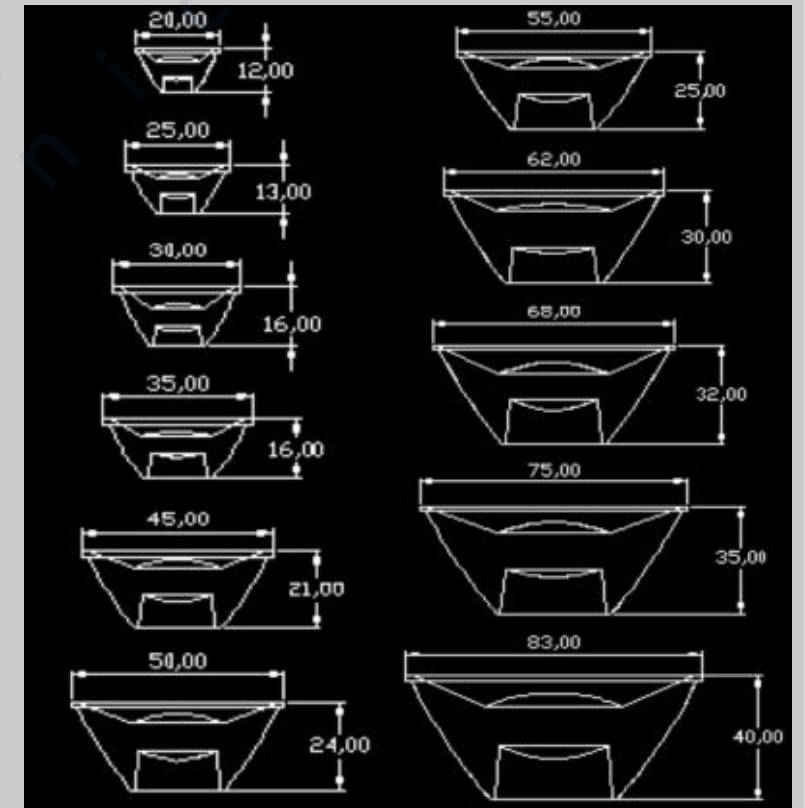
Zoom

- From 7° to 40°
- Cut off



Dark / Gemini / Moony / Glareless

Diameter	Height	Beam angle				
		10° (Dark Only)	15°	24°	36°	50°
20	12	10° (Dark Only)	15°	24°	36°	50°
25	13	10° (Dark Only)	15°	24°	36°	50°
30	16	10° (Dark Only)	15°	24°	36°	50°
35	16	10° (Dark Only)	15°	24°	36°	50°
45	21	10° (Dark Only)	15°	24°	36°	50°
50	24	10° (Dark Only)	15°	24°	36°	50°
55	25	10° (Dark Only)	15°	24°	36°	50°
62	30	10° (Dark Only)	15°	24°	36°	50°
68	32	10° (Dark Only)	15°	24°	36°	50°
75	35	10° (Dark Only)	15°	24°	36°	50°
83	40	10° (Dark Only)	15°	24°	36°	50°



Filmy

Diameter	Height	Beam angle				
		10°	15°	24°	36°	60°
30	06	10°	15°	24°	36°	60°
35	07	10°	15°	24°	36°	60°
45	09	10°	15°	24°	36°	60°
50	10	10°	15°	24°	36°	60°
55	11	10°	15°	24°	36°	60°
62	13	10°	15°	24°	36°	60°
68	13	10°	15°	24°	36°	60°
75	15	10°	15°	24°	36°	60°
83	17	10°	15°	24°	36°	60°
90	18	10°	15°	24°	36°	60°

V

Diameter	Height	Beam angle			
		15°	24°	36°	50°
25	17	15°	24°	36°	50°
30	19	15°	24°	36°	50°
35	23	15°	24°	36°	60°
45	34	15°	24°	36°	50°
50	36	15°	24°	36°	50°
55	39	15°	24°	36°	50°
62	41	15°	24°	36°	50°
68	45	15°	24°	36°	50°
75	47	15°	24°	36°	50°
83	60	15°	24°	36°	50°

Red color means Sample are not available yet

Zoom

Diameter	Zoom distance	Beam angle
30	11	16 ~ 45deg
35	13.6	13 ~ 44deg
45	21 ~	8.7 ~ 45deg
50	25	13 ~ 51deg
55	14.5	14 ~ 48deg
62		
68		
75		
83		

Rainbow

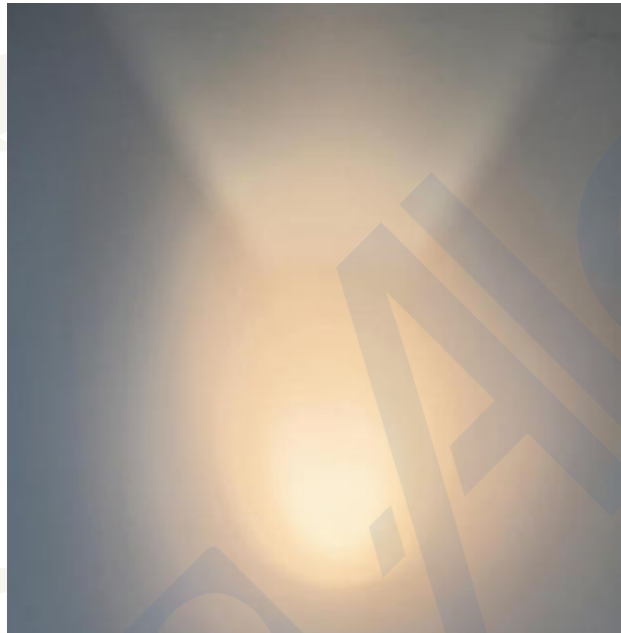
Diameter	Height	Beam angle
20	5	75
25	6	75
30		
35	9	75
45	12	75
50	15	75
55	15	75
62	16	75
68	19	75
75	18	75
83	18	80

Red color means Sample are not available yet

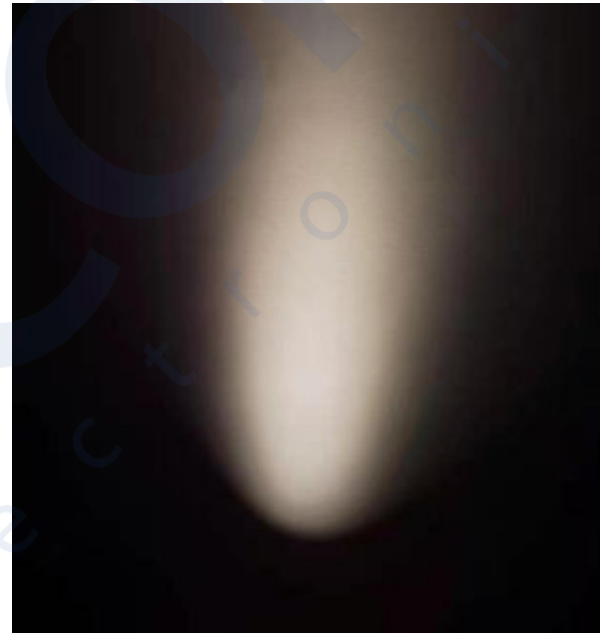
Light hood of Kirin Platform

Best recommendation - Dark

Others light hood
Poor wall washing effect



HercuLux (Small hole hood)
Good wall washing effect



Bright black



Bright gold



Bright silver



Matte black

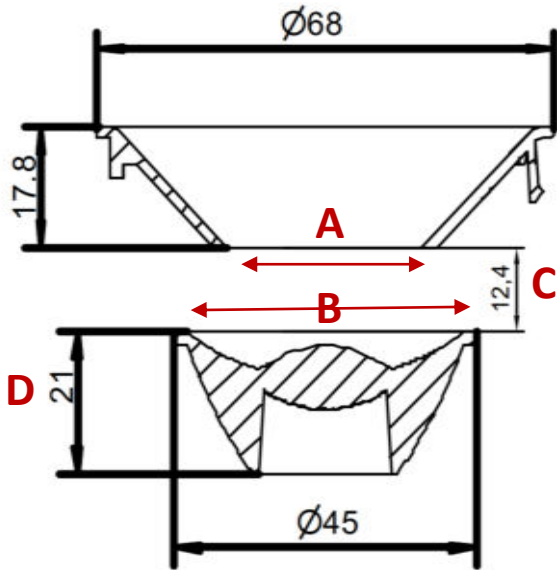
Light hood of Kirin Platform

Best recommendation - Dark

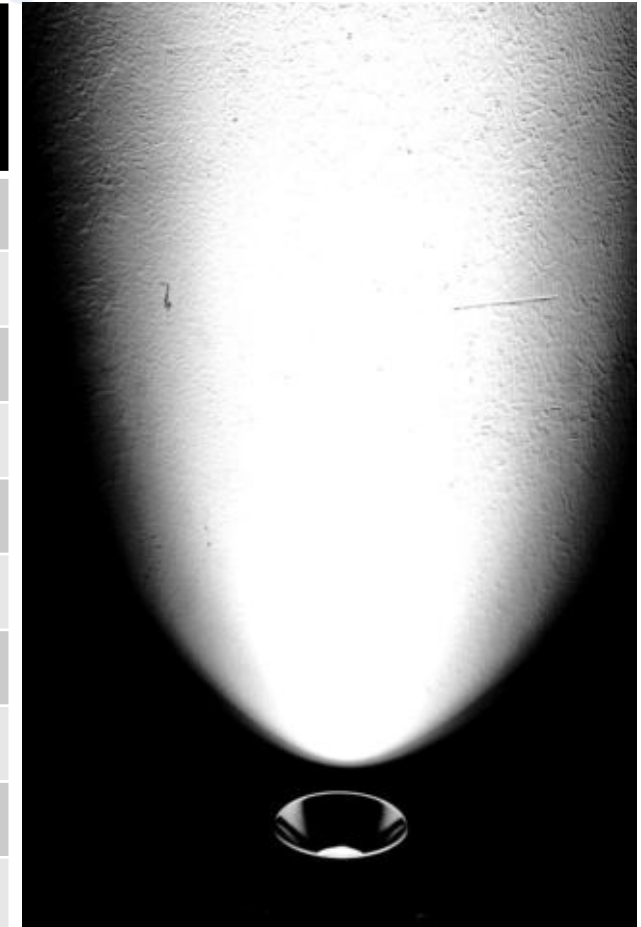
Type/Color	Bright silver	Bright black	Matte Black	Bright gold
Small hole hood				
Oblique hood				
Wall washing hood				

Light hood of Kirin Platform

Best recommendation - Dark



Lens diameter B	Lens height D	Small hole hood opening A	Distance from small hole to lens C
25	13	17	6
30	16	19	8
35	16	23	9
45	21	29	12
50	24	35	14
55	25	38	19
62	30	46	20
68	32	48	22
75	35	52	25
83	40	65	29

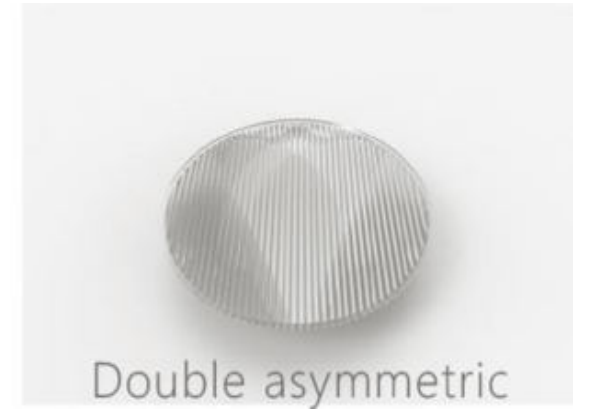
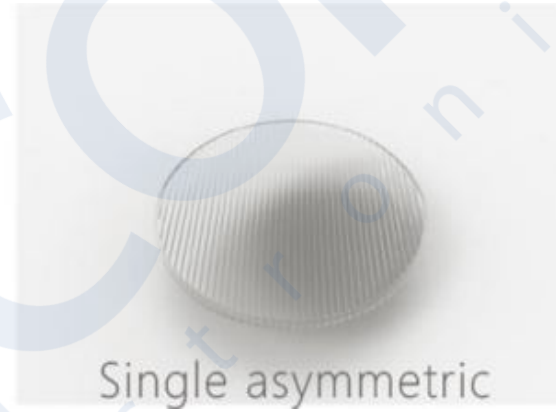
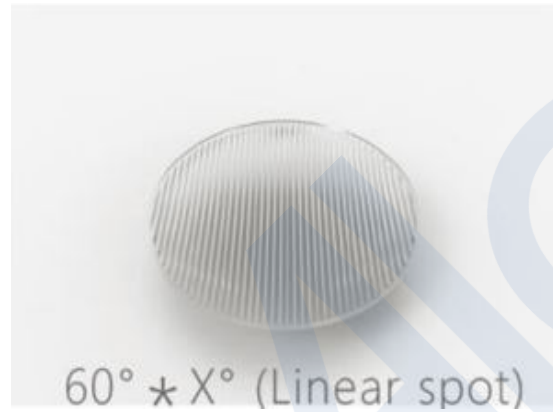


**Small hole hood
Anti-glare better**

Light filter of Kirin Platform

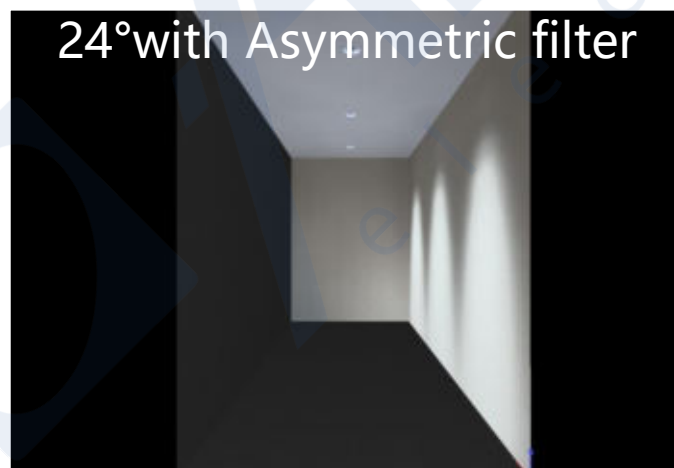
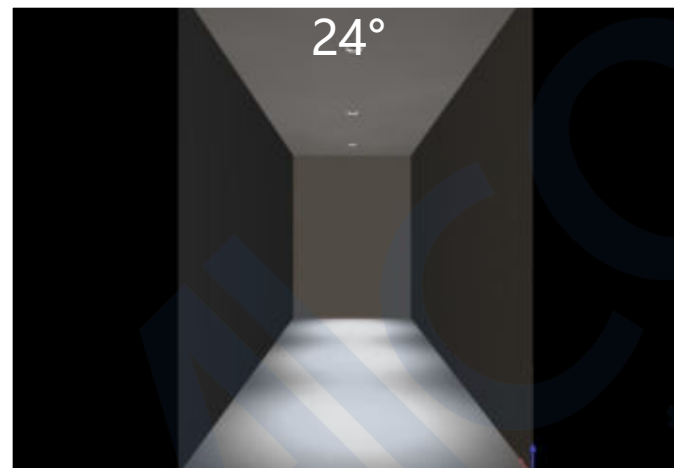
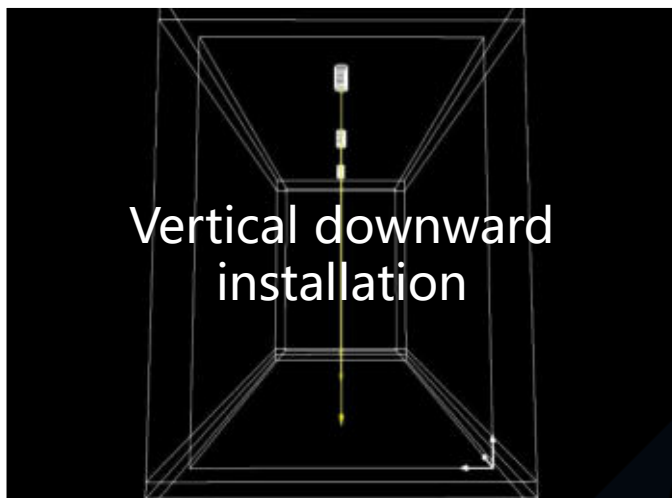


Wall washing light filter
for Dark 35mm / 45mm
only at this moment



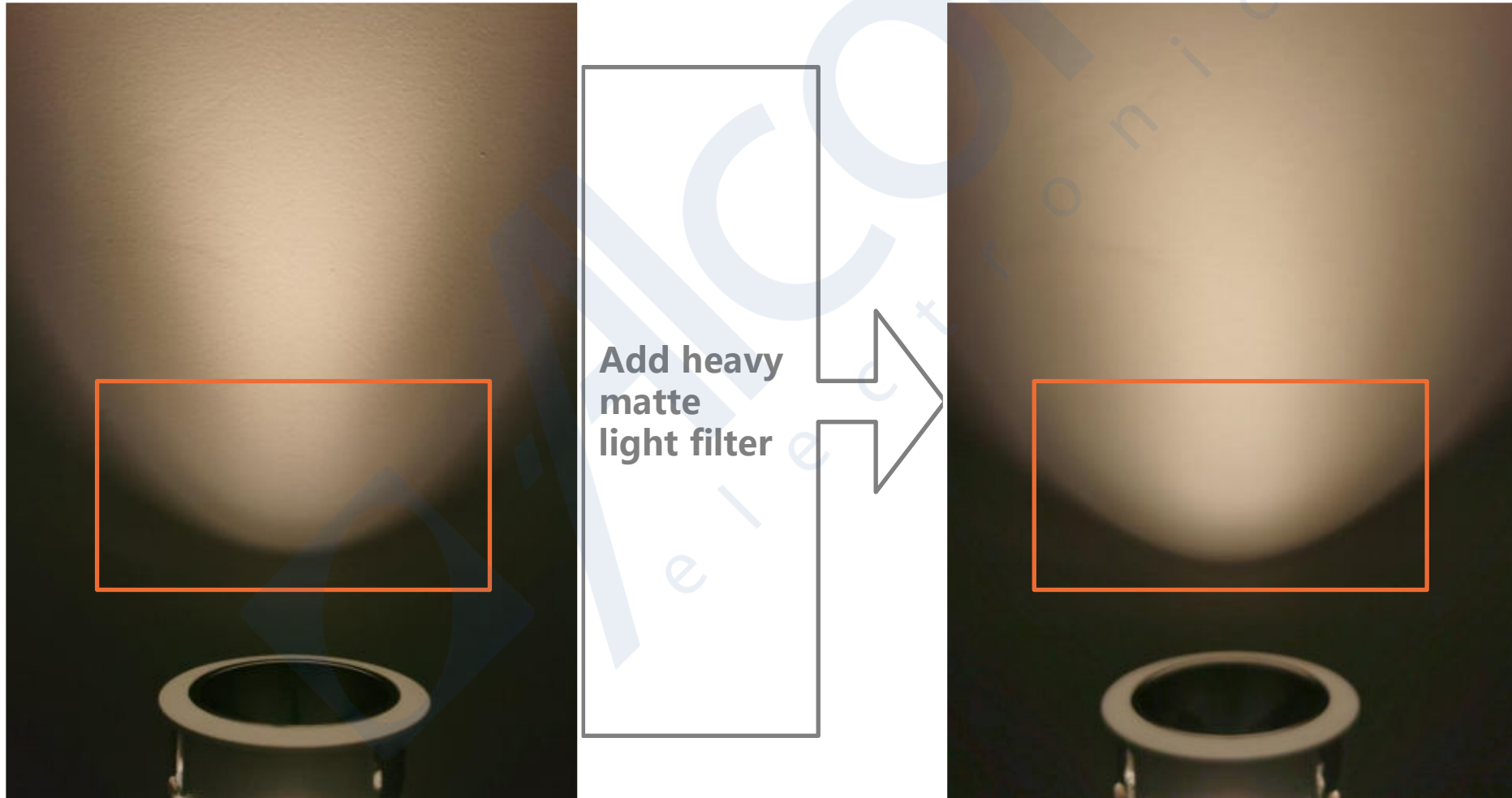
Light filter of Kirin Platform

Best recommendation - Dark



Light filter of Kirin Platform

Solve the problem of layered problem



Light filter of Kirin Platform

Wall washing filter effect

Best recommendation – Dark series

