

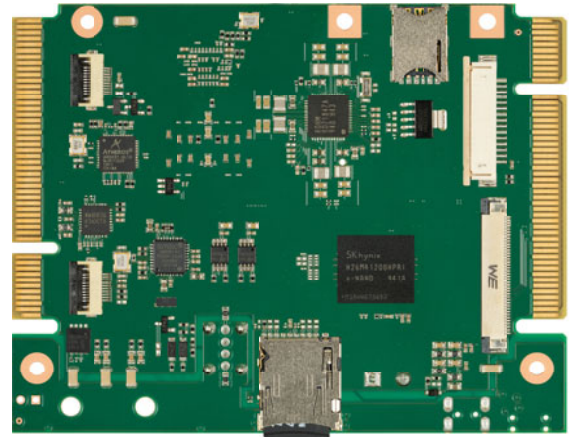
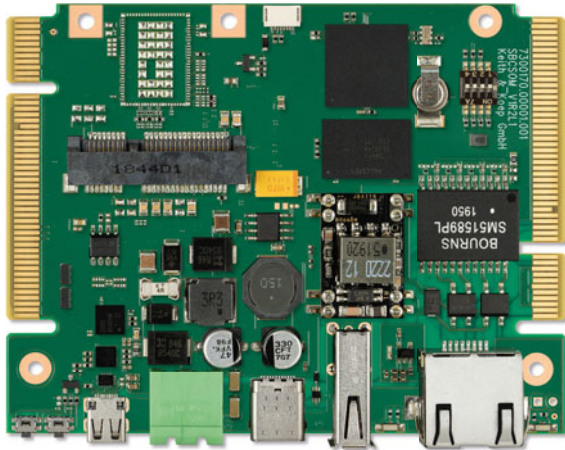
SBCSOM

Modular Single Board Computer with i.MX 8M Mini/Nano

- The modular design allows easy integration of individual interfaces
- A fast realisation of a customized SBC with low design risk and low development costs is possible

Keith & Koep

Garz  Fricke Group



Features

Processors	NXP™ i.MX 8M Mini with Arm® Cortex A53 Quad-Core up to 1.8 GHz (Consumer), 1.6 GHz (Industrial), integrated Cortex M4 NXP™ i.MX 8M Nano with Arm® Cortex A53 Quad-Core up to 1.5 GHz (Consumer), 1.4 GHz (Industrial), integrated Cortex M7
RAM	With i.MX 8M Mini CPU: Up to 8 GByte LPDDR4-3200, 32 Bit With i.MX 8M Nano CPU: Up to 4 GByte LPDDR4-3200, 16 Bit
Flash Storage	4 Bit wide µSD Card Socket or 8 Bit wide eMMC, eMMC available in different memory sizes
Display Interfaces	Mini-HDMI, LVDS (KuK Modis Standard), Dual-LVDS
Features	USB2.0 Typ C, USB2.0 Typ A (only with i.MX 8M Mini), RJ45 1 Gbit Ethernet, RTC, Mini-PCIe (only with i.MX 8M Mini), Audio Codec, RTC
Wireless Communication	With i.MX 8M Mini: Onboard WiFi-Bluetooth Module WiFi 2.4GHz/5Ghz, 802.11 a/b/g/n/ac 2x2 MU-MIMO / Bluetooth 5.0 With i.MX 8M Nano: No WiFi/Bluetooth

Expandability

System-Connector 1	Power-Supply, 2x UART or SPI, I2C, USB, SDIO, MIPI-DSI (4ch), MIPI-CSI (4ch), PCIe, GPIO (24)
System-Connector 2	Power-Supply, 2x UART, QSPI, I2C, USB, Speaker, Headphone, Line-In, Microphone, SPDIF, I2S, SIOP (Ethernet, fiber), GPIO (42)
FFC-Connectors	i-MOD UART (RS232/485), i-MOD USB/I2C, KUK-Modis (LVDS/MIPI), MIPI-CSI, Camera, Speaker

General Details

System Software	Windows 10 IoT - Linux Debian, Yocto - Android
Spannungsversorgung	Voltage Supply: Industrial +12 up to 24V supply / POE (Power over Ethernet) optional
Operating Temperature	-40°C - 85°C (Industrial), -25°C - 85°C (Extended Consumer), 0 bis 70°C (Consumer)
Dimensions	95 x 73 x 20 mm (W x H x D)
Environmental Standard	RoHS, REACH, WEEE
Availability	10 years form, function*



Singel 3 | B-2550 Kontich | Belgium | Tel. +32 (0)3 458 30 33 | info@alcom.be | www.alcom.be
Rivium 1e straat 52 | 2909 LE Capelle aan den IJssel | The Netherlands | Tel. +31 (0)10 288 25 00 | info@alcom.nl | www.alcom.nl



*beginning product life circle Rev.2102
Technical modifications reserved, errors excepted