

Flash Memory Socket

CF Express/CFast(Compact Fast)/CF(Compact Flash)/Mirco SD/SD/Smart Card



CFexpress



Push-Push

15u"
101M-TE10



Push-Pull

15u"
101M-TE20



Push-Pull w/Lock

15u"
101M-TE30

CFast



Push-Pull

H=6.05mm
120A-605D00
H=8.35mm
120A-835D00



Push-Pull

with lock, H=8.35mm
120B-835D00



Push-Push

H=6.05mm
120C-605D00
H=8.35mm
120C-835D00



Slim

H=4.15mm
120D-4C00



Vertical

without lock
120E-0G00



Vertical

with lock
120E-1G00

CF



Type I/II

Top Mount
101B-TAA0-R



Ejector

Ejector L=20mm
101C-ESB0-R



Standard Slim

Locating Peg: 38.74mm
101D-TAAB-R01
Locating Peg: 40.16mm
101D-TAAA-R01
Locating Peg: 38.74mm, Stand off 1.4mm
101D-TACB-R01
Locating Peg: 40.16mm, Stand off 1.4mm
101D-TACA-R01



Reverse Slim

Locating Peg: 38.74mm
101D-RAAB-R01
Locating Peg: 40.16mm
101D-RAAA-R01
Locating Peg: 38.74mm, Stand off 1.4mm
101D-RACB-R01
Locating Peg: 40.16mm, Stand off 1.4mm
101D-RACA-R01

Micro SD



Push-Push

Push-Push SMT Type
112L-TDA0



Hinge

Hinge Type
112C-TBAR-R02



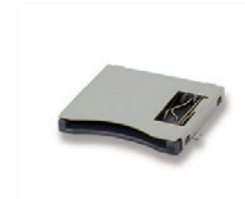
Push-Push

with switch, H= 1.85mm
112J-TDAR-R01



Push-Push

H=1.83mm
112A-TAAR-R03



Push-Pull

with switch
112I-TA01



Push-Pull

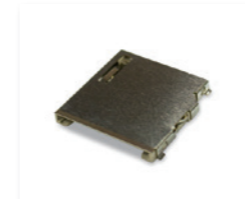
short profile
112K-TAA0-RA1



Combo, Push-Push

Micro SD+SIM
112G-TA00-R

SD



Push-Pull

with switch
104C-TAA1



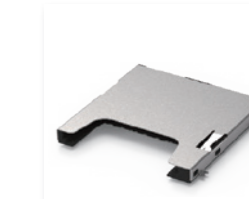
Push-Push

with switch, reverse mount
104D-RCA0-RA1



Push-Push

top mount, stand off:0mm
104D-TCA0-R06
with switch, stand off:1.8mm
104D-TCC0-R06
with card lock
104H-TDA0-R01



Push-Push

UHS-II SD 4.1
104I-TA01

Smart Card



Two-sided

DIP
116F-DBC0



One-sided

SMT
116G-SB00