

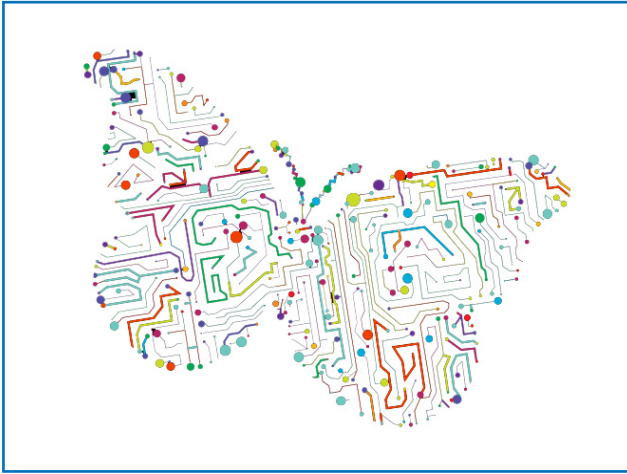


*Dedicated industrial IoT computing
and mobility solutions*

ARBOR



Arbor & Alcom



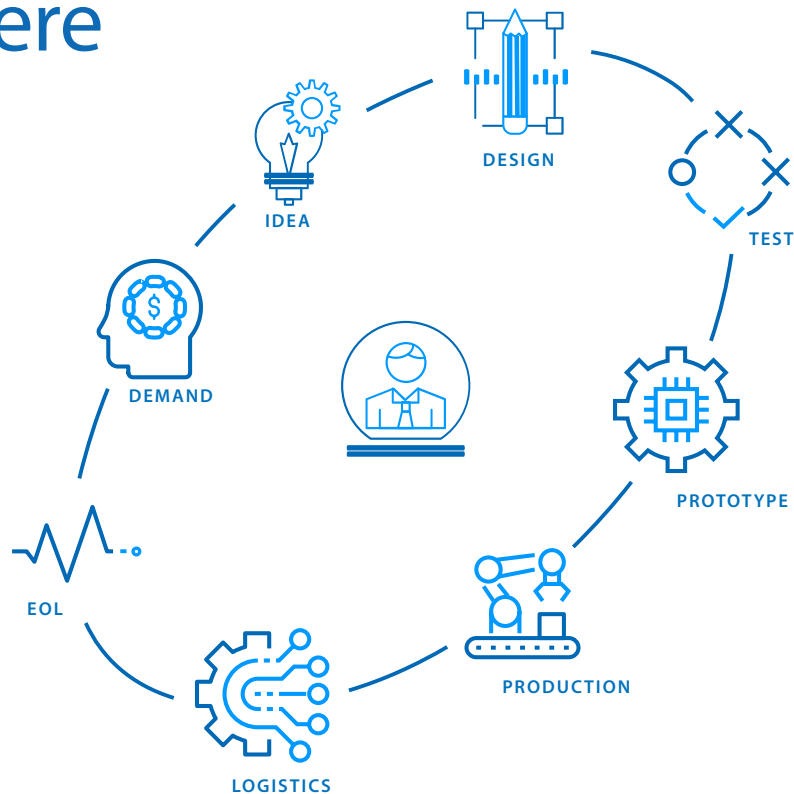
Arbor provides dedicated industrial IoT computing and mobility solutions.

Leading edge products are available as embedded boards, industrial HMI, IoT handheld devices, industrial computers, medical computing and tablet PC's. Solutions can be found in Intelligent Healthcare, Internet of Vehicles, Intelligent Retail and Industrial Automation.

Alcom and Arbor's partnership results in the offering of system integration, customer-center design support and technical services in proximity of Benelux customers by manufacturer certified application engineers.

we are dedicated to a win-win-win formula for success where customer, Alcom and Arbor work closely together.

Co-creation starts here



Alcom considers everybody an indispensable added value in the collaborative chain with all of its partners.



Applications & Markets



HEALTHCARE



LOGISTICS



TRANSPORTATION



INDUSTRIAL AUTOMATION



DIGITAL SIGNAGE



MPOS

Computing & Mobility products

EMBEDDED BOARDS

INDUSTRIAL HMI

IOT HANDHELD DEVICES

INDUSTRIAL COMPUTERS

MEDICAL COMPUTING

TABLET PC

From concept to solution

CONSULT & DESIGN

- R&D expertise
- Validations
- Cost-effective products
- Strict standard

INTELLIGENT SOLUTIONS

- Turn-key solutions
- Full integration
- Experienced Implementation
- High reliability

AFTER-SALES SERVICE

- e-RMA
- On-line support
- Long-term services
- Quality assurance

IIoT Solutions & Hardware

IoT Handheld & Tablets



POS TERMINAL



RETAIL TERMINAL



VEHICLE TABLET

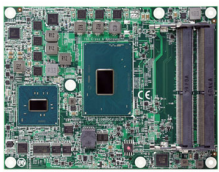


IOT HANDHELD



MOBILE TABLET

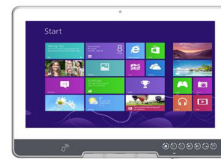
Medical board-to-system



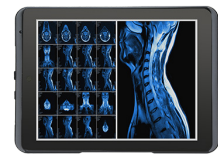
EMBEDDED BOARD



BEDSIDE INFOTAINMENT



EXPERT MEDICAL STATION



MOBILE CLINICAL ASSISTANT

Industrial Panel PCs



STAINLESS 16:9 PANEL PC



16:9 PANEL PC



4:3 PANEL PC



SLIM 10" PANEL PC



SLIM 5" PANEL PC

Industrial Computers



AUTOMATION CONTROLLER



MODULAR CONTROLLER



VISION COMPUTER



VEHICLE CONTROLLER



DIGITAL SIGNAGE PLAYER

Embedded Boards



COM EXPRESS (TYPE 6/10/2)	PC-104 PC-104+	HALF / FULL-SIZE SLOT COMPUTING
ETX	3.5 COMPACT	MINI-ITX
QSEVEN	EPIC	MICRO-ITX
SYSTEM-ON-MODULE	CARRIER BOARDS	HMI

Industrial Automation Overview

Automation Controllers

Bringing industrial strength to IIoT applications



Transportation Controllers

Internet of vehicles on the move



Edge Computing

Industrial 4.0 Edge server



Industrial-Grade Panel PCs

Next-generation HMI for Industry 4.0



Edge AI Systems

Exploring AI possibilities at the edge



Ultra Slim Panel PCs

Limitless versatility via ARM-based architecture



Machine Vision Controllers

Kick-start zero defects on the production line



Multi-Display Controller

Stunning 4K/UHD Video wall solution



Smart Industrial Power Back-up

Protect your factory assets with super-capacitor power back-up solution



Explosion-proof Certified Mobiles

Mobile inspection assistant



New product releases

BOX PC FOR DIGITAL SIGNAGE PLAYER

ARBOR's ELIT series is specifically designed for digital signage applications such as hotel, Movie Theater, airport, train station and MRT etc. The ELIT series provides versatile video display interfaces including DVI, HDMI and S-video as well as to line-out interfaces for dual display.



ROBUST BOX PC WITH INTEL® 10TH GENERATION CORE™ I9/I7/I5/I3 PROCESSOR
FPC-8100 is powered by Intel 10th generation processors with mPCIe for I/O expansion, 2 independent display output and wide range DC input (9-36V).

RUGGEDIZED EDGE AI COMPUTING PLATFORM

Ruggedized Edge AI Computing Platform supporting 250W GPU or Dual Nvidia® Tesla T4 Graphics Cards, Intel®10th Gen Xeon®Core™ Processor with 6 GbE PoE

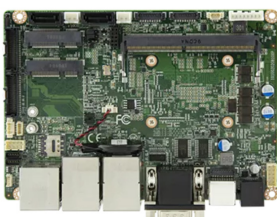


SMART INDUSTRIAL POWER BACKUP SOLUTION

Protect Your Factory Assets with Super-Capacitor Power Backup Solution
Safe, secure, uninterrupted power is crucial to today's factory productivity, sudden power failure can damage equipment, corrupt data, disrupt production, an UPS usually have batteries inside, ARBOR's power backup solution doesn't, we use supercapacitors instead, guard against power glitches and short-term power loss or to allow for a graceful shutdown.

RUGGED & RELIABLE 8" PANEL PC

IoT-800N is an 8" HMI based on the powerful Quad-Core ARM Cortex-A35 processor. The system runs on Android 8.1 and is designed to meet demanding applications where performance matters.



AMD RYZEN EMBEDDED R1000 R1102G PROCESSOR 3.5" COMPACT BOARD

ARBOR Single Board Computer (SBC) series ranging from 3.5", PC/104, PC/104-Plus and EPIC, to a wide range of full-size and half-size Slot Computing boards. ARBOR's SBCs are designed around the powerful core logic embodied within the chipsets from Intel and AMD. The EmCORE-a10R2 is a 3.5" ready-to-use platform based on Ryzen R1000.

Alcom product portfolio

ELECTRONIC COMPONENT SOLUTIONS	WIRELESS EMBEDDED CONNECTIVITY & SENSORS	WIRELESS & INDUSTRIAL CONTROLS NETWORKING	DISPLAY & TOUCH
LED & SOLID STATE LIGHTING	POWER & EMC	RUGGED MOBILE COMPUTING	EMBEDDED SYSTEMS, AI & EDGE COMPUTING

<ul style="list-style-type: none"> • Semiconductors • Frequency & timing • Power management • Circuit protection & discretes • Magnetics • Passives & electromechanical • Connectors & cable assemblies • Photonics 	<ul style="list-style-type: none"> • Wireless modules • Antenna's • Sensors
<ul style="list-style-type: none"> • Routers & gateways • Wireless embedded computers • Industrial ethernet and IP variations • Wired & wireless machine networking • Antenna's • Device to cloud solutions • Connectivity & remote management services • Networking & connectivity 	<ul style="list-style-type: none"> • Displays • Touch screens • Optical bonding • Total display solutions
<ul style="list-style-type: none"> • LED light sources • Optics • Thermal management • Power & intelligent controls • LED modules 	<ul style="list-style-type: none"> • AC/DC power supplies • DC/DC converters • Power management modules • Wireless charging • E-mobility solutions • Transformers & power inductors • UPS • EMC filters
<ul style="list-style-type: none"> • Tablets • PDA's • Vehicle mount computers • Accessories 	<ul style="list-style-type: none"> • Computer-on-modules • Embedded boards • Industrial PC & automation • System integration

Bridging the gap between technology, people and business with a human interface.





ALCOM BELGIUM

Alcom electronics nv/sa
Singel 3
2550 Kontich
Tel: +32 (0)3 458 30 33
Fax: +32 (0)3 458 31 26
Email: info@alcom.be
www.alcom.be

ALCOM THE NETHERLANDS

Alcom Electronics B.V.
Rivium 1e straat 52
2909 LE Capelle a/d IJssel
Tel: +31 (0)10 288 25 00
Fax: +31 (0)10 288 25 25
Email: info@alcom.nl
www.alcom.nl

Get to know us

ALCOM PROVIDES THE WORLD'S MOST ADVANCED TECHNOLOGIES.

With a team of like-minded entrepreneurs, Alcom will continue to inspire its valued customers to use advanced innovative building blocks in vertical markets. The importance of providing high-level services and a human interface based on specialism, knowledge and design-in expertise will remain key differentiators.

Alcom is positioned for growth. We invite all our customers to discuss their current and future concepts and designs. Let's connect, work and grow together.

