

LTE Module FG101-EAU-00



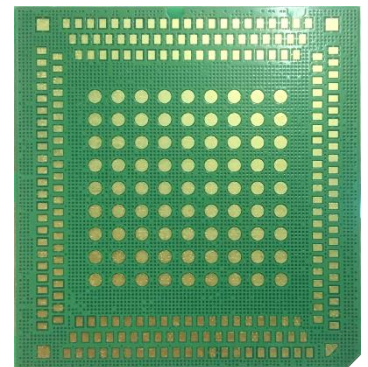
3 Modes

CAT12

EMEA/Australia

Temperature Range
-40°C~+85°C

Fibocom FG101-EAU is a LGA form factor LTE wireless communication module which supports LTE-TDD/LTE-FDD/WCDMA 3 modes. The highest speed can reach Cat12 600Mbps DL and 150Mbps UL. It can cover EMEA/Australia mobile network and be used in industries such as CPE, STB, industrial 4.0 and Internet of Vehicles.



LTE Module FG101-EAU-00



Product Features

- LTE FDD: B1/3/5/7/8/18/19/20/28/32
- LTE TDD: B38/40/41/42/43/48
- WCDMA: B1/5/6/8/19
- LGA :39.5x37x2.8 mm
- Temperature:
 - Normal Operation: -30~+75°C
 - Extended operation: -40~+85°C
 - Storage Temperature: -40~+90°C
- Operating Voltage: 3.3V~4.3V typical 3.8V
- AT Command Set: 3GPP TS 27.007 and 27.005, and proprietary FIBOCOM AT commands
- TX Power:
 - WCDMA : 23.5dBm±2dBm
 - LTE FDD: 23.0dBm±2dBm
 - LTE TDD: 23.0dBm±2dBm

Data

Cat12:
LTE: 600Mbps DL, 150Mbps UL
WCDMA: 42 Mbps DL (Cat 24)/5.76 Mbps UL (Cat 6)

Function

- SMS: MO/MT Text and PDU modes
- DHCP/IPv4/IPv6/ECM/RNDIS/GobiNet/QMI_WWAN
- DFOTA/FOTA
- VoLTE/Recording/BIP
- Other: GNSS/Cell ID
- Note: TTS has copyright fee

Interface

- SIM Card: 1.8V/2.85V
- USB 3.0
- PCIE2.0
- UART
- I2C
- PCM/I2S

- ADC
- SDIO
- SPI
- GPIO
- Antenna: Main/Div/MIMO1/MIMO2/GNSS

Driver

- Linux/ Android**

Approval

- Industry: GCF/HF
- Regulation: CE-RED/UKCA/RCM/RoHS/REACH
- Operator:
BT**/H3G**/Telefonica**/DT**/VDF**/Swisscom**/Optus**

** : Planning

Copyright©FibocomWirelessInc. | Subject to changes in technology, design and availability | E-mail: market@fibocom.com | Tel: +86 755-2673 3555