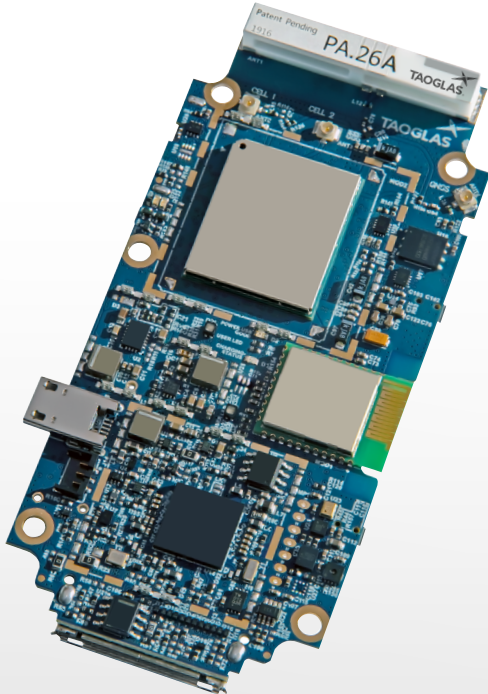


DATASHEET

Taoglas EDGE™ EC55 System on Module

4G/3G/2G NB-IoT, CatM, Multi-Sensor SoM



**Fully integrated, pre-certified,
technology stack of hardware,
firmware and cloud platform.
Cut time-to-market by up to 80%.**

The **Taoglas EDGE™ EC55** is an award-winning proven System-on-Module (SoM), which offer the ultimate degree of flexibility and scalability while saving costs and time-to-market for OEMs and enterprises. Developed by industry experts and with proven commercial solutions across healthcare, industrial, transportation, agriculture and smart city applications, you can be up and running with the Taoglas EDGE EC55 pre-certified SoM in minutes and the IoT design process can literally become as simple as activating a SIM card. The solution is supported by **Taoglas Insights™** - a cloud management platform - which provides a scalable end-to-end solution for easy control and management of connected devices.

Typical Applications



Robotics



Autonomous
Vehicles



Transportation



UAV



Marine



Precision
Agriculture



Navigation



Asset Tracking

Key features

- Small Form Factor
- Ultra low power consumption
- Highly secure architecture
- Cost-effective end-to-end System-on-Module with cellular 4G, GNSS, Bluetooth and on-board environment and movement sensors
- Plug-and-play with fast-time-to-value for a variety of IoT applications
- Device, data, SIM and sensor management via **Taoglas Insights™** platform
- Secure provisioning and certificate management
- Over The Air (OTA) firmware updates and device diagnostics
- Deployment lifecycle control
- Easy 3rd party machine vision AI/sensor interfacing
- Pre-certified

4G Cat 1
3G
2G
NB-IoT
LTE CatM



GPS
GLONASS
Galileo
BeiDou



BLE4.2
BEACONS

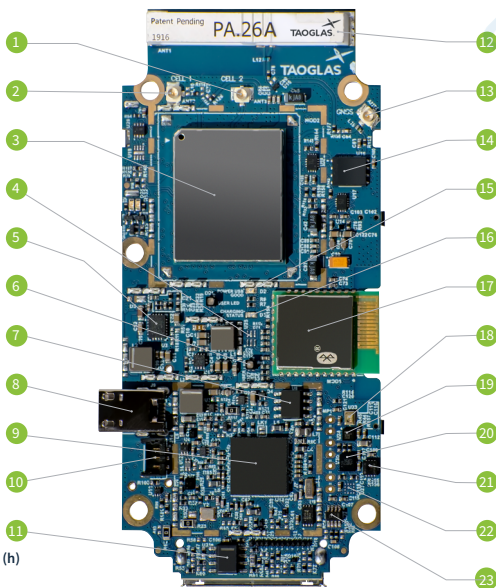


Key benefits

- Can help you build your IoT prototype in minutes
- OEM boards can be customized and purchased separately for new product introductions
- Reduce the cost and complexity of introducing IoT strategies into enterprises avoiding lengthy design, development, integration, testing, data services and customization spend with fast time-to-value
- Provides real-time sensor and positioning data and can enable real-time intelligence from the EDGE instantly

Taoglas EDGE™ EC55 System on Module

Hardware Specifications		
System	Processor	STM32 ARM Cortex M7 (300MHz)
	RAM	384 KB
	Flash	2048 KB
	Firmware/OS	Free RTOS + Applications Libraries (Real-time Performance) - Cloud Mutual authentication
	Security	Hardware root of trust. Secure key storage
Radios	Cellular Modems	Optional SKU's (2G, 3G, 4G, NB-IoT, CAT-M) Integrated PCB Antenna Options
	Cellular Antenna	External Antenna via uFL
	GNSS	GPS/GLONASS/Galileo/BeiDou (use external antenna)
	Bluetooth	BLE 4.2
	Expansion Options	LoRa / SubGHz
Sensors	Temperature Sensor	Range: -40 to 125 °C Accuracy: ±0.3 °C (Standard), ±0.2 °C (High-End Version)
	Humidity Sensor	Range: 0 to 100 %RH Accuracy: ±3% RH (Standard), ±1.5% RH (High-End Version)
	Light Sensor	Range: 0.045-188,000 Lux
	Atmospheric Pressure Sensor	Range: 300 ... 1100 hPa Accuracy: typ. ± 1 hPa
	Accelerometer	Range: up to ± 16g Accuracy: up to 16384 LSB/g with 16 bit resolution
	Gyroscope	Range: up to 2000°/s Accuracy: up to 262.4 LSB°/s with 16 bit resolution
	Magnetometer	Range: ±1300µT (x, y-axis), ±2500µT (z-axis) Accuracy: -0.3µT
Expansion	External Connector	24-pin expansion connector
	USB	Micro USB B connector (Charging Only)
Physical	Dimensions	94 x 50mm
Power	Voltage	3.2V - 4.5V (External Power supply)
	Current	2A - 3A
	Power Consumption - Sleep	≈ 60 µA
	Power Consumption - Idle / Stand by	≈ 30 mA
	Power Consumption - Running	up to 3A
	Battery	Various Battery Options/Capacities Available - Rechargeable and Non-Rechargeable, Lithium Polymer or Lithium Ion
Communications Interfaces		
Signal Acquisition / Generation	SAR ADC	12 bit ADC's, 6 channels multiplexed on the I/O connector, max sampling rate is 6KHz
	PWM	50KHz max, 16bit
Environment	Operating Temperature	-20C to +80C
	Operating Humidity	85% non-condensing
	Storage Temperature	-20C to +80C
	Storage Humidity	85% non-condensing
Warranty		1 Year
SKU	EC55B	Multi Sensor IoT Connected SOM (US)
SKU	EC55L	Multi Sensor IoT Connected SOM (EMEA)
SKU	EC55N	aoglasEDGE™ EC55 - Multi Sensor IoT Connected SOM (NB-IoT)



Board size:
50mm (w) x 94mm (h)

- | | | |
|--|--------------------------------------|-------------------------------------|
| 1. Cellular diversity external antenna | 9. Microcontroller | 17. BLE module |
| 2. Cellular main ext. antenna | 10. Battery connector | 18. Pressure sensor |
| 3. Cellular modem | 11. RS-485 IC | 19. Temperature and humidity sensor |
| 4. Light sensor | 12. Internal cellular & GNSS antenna | 20. Accelerometer |
| 5. Battery charger block | 13. GNSS external antenna | 21. Accelerometer & Gyro |
| 6. USER LED | 14. ESIM card | 22. Magnetometer |
| 7. Flash memory | 15. Power USB good status | 23. CAN IC |
| 8. USB connector | 16. Battery charging LED status | |

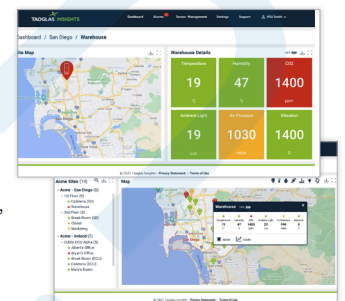
Taoglas Insights™ - Real-time analytics

Taoglas Insights™ is your cloud-based software platform that allows for flexible, reliable and efficient gathering of data and life cycle management of EDGE devices from one dashboard.

- Device management
- Sensor management
- Security management
- Connectivity management
- Application platform

It enables real-time insights and intelligence that drive optimization, cost savings, compliance and new revenue opportunities for our enterprise customers.

Taoglas Insights™ provides everything to securely connect and manage your sensors, machines and devices remotely, removing complexity and allowing your organization to focus on today's business applications.



For further details visit:

taoglas.com/product/ec55-system-on-module/