



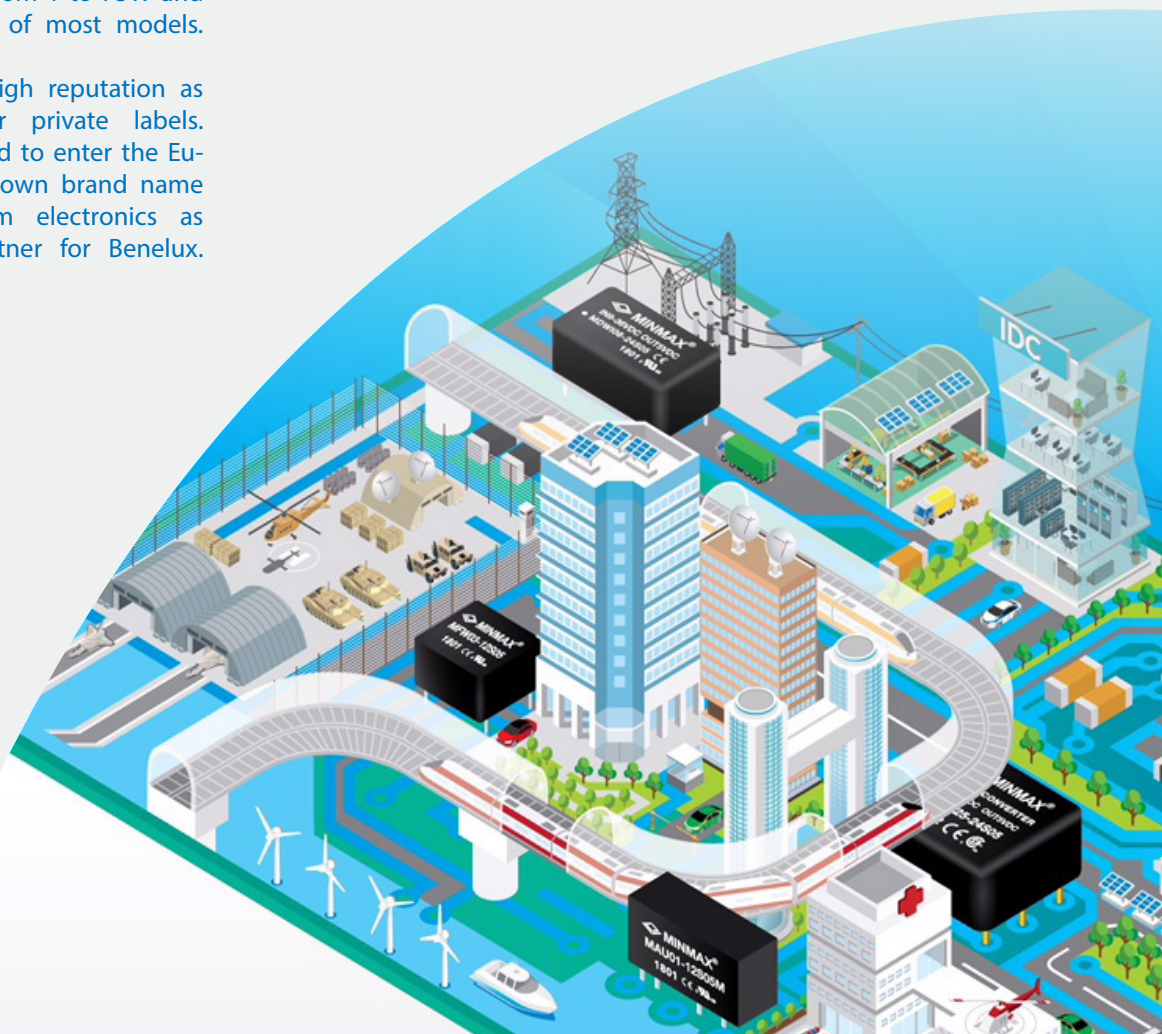
Featured supplier



Minmax Technology Co., LTD., is a world leader in the design and manufacturing of DC-DC converters & AC-DC industrial power supplies. Minmax products are widely used for industrial, medical/health care, railway, transportation, smart grid, robot, etc. applications. The comprehensive standard range of products covers power ratings from 1 to 75W and sample stock delivery of most models.

MinMax achieved a high reputation as OEM-manufacturer for private labels. They have now decided to enter the European market under own brand name and appointed Alcom electronics as its sales channel partner for Benelux.

## *General Industrial Power Solutions*



# Applications & Markets



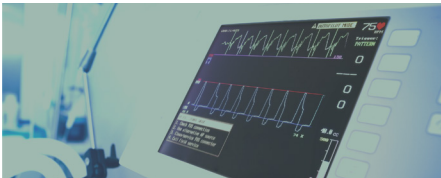
General Industrial



Ultra-High Isolation



Railway certified



Medical Safety



Customized Power Solutions

## MINMAX Power Solutions 1-75W DC-DC Converters & AC-DC Power Supplies



Power for a better future



**SAVE RISK**  
**SAVE TIME**  
**SAVE MONEY**  
**SAVE SPACE**

Water Washable

3 YEAR WARRANTY

RoHS Compliant

LAW

EMC Certification

EN45545-2

CONFLICT FREE Minerals Policy

REACH COMPLIANT

MEDICAL IEC 60601-1

RAILWAY EN50155

MINMAX®  
DC/DC CONVERTER  
IN9-36VDC OUT5VDC  
MJW125-24905  
1701





## General Purpose Power Solutions

### 1-5 W SIP Package DC-DC Converters

- I/O Isolation Voltage 1000/1500/1600/3000VDC
- Operating Ambient Temp. Range -40°C to +95°C
- UL/cUL/IEC/EN 60950-1 ITE Safety Approval

### 1-6W SMD Package DC-DC Converters

- I/O Isolation Voltage 1000/1500/3000VDC
- Operating Ambient Temp. Range -40°C to +90°C
- UL/cUL/IEC/EN 60950-1 ITE Safety Approval

### 1-10W DIP Package DC-DC Converters

- I/O Isolation Voltage 1500/3000VDC
- Operating Ambient Temp. Range -40°C to +90°C
- UL/cUL/IEC/EN 60950-1 ITE Safety Approval

### 10-25W 1"×1" Package DC-DC Converters

- I/O Isolation Voltage 1500VDC
- Operating Ambient Temp. Range -40°C to +90°C
- UL/cUL/IEC/EN 60950-1 ITE Safety Approval

### 30-50 W 2"×1" & 2"×1.6" Package DC-DC Converters

- High Efficiency up to 92%
- Operating Ambient Temp. Range -40°C to +85°C
- UL/cUL/IEC/EN 60950-1 ITE Safety Approval

### 20-60W Chassis & DIN-Rail Mounting DC-DC Converters

- I/O Isolation Voltage 2500VDC
- Operating Ambient Temp. Range -40°C to +90°C
- UL/cUL/IEC/EN 60950-1 ITE Safety Approval & CE Marking

### 0.5-1A Switching Regulators

- Pin-out compatible with LM78xx Linear Regulator
- Excellent Efficiency up to 97%
- Operating Ambient Temp. Range -40°C to +90°C

### 2-60W AC-DC Power Supplies

- I/O Isolation Voltage 3000VAC with Reinforced Insulation
- Operating Ambient Temp. Range -30°C to +70°C
- UL/cUL/IEC/EN 60950-1 ITE Safety Approval

## Ultra-High Isolation Power Solutions

## Railway Certified Power Solutions

### 1-20W Ultra-high Isolation DC-DC Converters

- I/O Isolation Voltage 5200/8000/9000VDC with Reinforced Insulation
- Operating Ambient Temp. Range -40°C to +95°C
- UL/cUL/IEC/EN 60950-1 ITE Safety Approval

### 3-75W Railway Certified DC-DC Converters

- I/O Isolation Voltage 3000VAC with Reinforced Insulation
- Operating Ambient Temp. Range -40°C to +95°C
- Railway Certified meets EN50155 (IEC60571) & EN45545-2

## Medical Safety Power Solutions

### 1-20W Medical Safety DC-DC Converters

- I/O Isolation Voltage 3000/4000/4200/5000VAC with Reinforced Insulation
- Medical Safety meets 2xMOOP/2xMOPP per 3rd Edition of IEC/EN 60601-1 & ANSI/AAMI ES60601-1
- UL/cUL/IEC/EN 60950-1 ITE Safety Approval

### 24-60W Medical Safety AC-DC Power Supplies

- I/O Isolation Voltage 4000VAC with Reinforced Insulation
- Medical Safety meets 2xMOPP per 3rd Edition of IEC/EN 60601-1 & ANSI/AAMI ES60601-1
- UL/cUL/IEC/EN 60950-1 ITE Safety Approval

# Co-creation starts here



|                                |  |   |
|--------------------------------|--|---|
| ELECTRONIC COMPONENT SOLUTIONS | <ul style="list-style-type: none"> <li>• Semiconductors</li> <li>• Passives</li> <li>• Electromechanical</li> <li>• Photonics</li> </ul> | <ul style="list-style-type: none"> <li>• Wireless Modules</li> <li>• Wireless Boxed</li> <li>• Networking &amp; Connectivity</li> </ul> |
| WIRELESS & NETWORKING          |  |   |
| DISPLAY & TOUCH                | <ul style="list-style-type: none"> <li>• Display</li> <li>• Touch</li> </ul>   | <ul style="list-style-type: none"> <li>• Led</li> <li>• Solid State Lighting</li> </ul>   |
| LED & SOLID STATE LIGHTING     |  |   |
| EMBEDDED COMPUTING             | <ul style="list-style-type: none"> <li>• SBC, CPU &amp; IPC</li> <li>• Memory Storage</li> <li>• Rugged Mobile Computing</li> </ul>      | <ul style="list-style-type: none"> <li>• Power Conversion</li> <li>• EMC</li> </ul>   |
| POWER & EMC                    |  |   |

## Alcom Belgium Alcom Netherlands

|                          |   |
|--------------------------|---|
| Alcom electronics nv/sa  | Alcom electronics bv                              |
| Singel 3<br>2550 Kontich | Rivium 1e straat 52<br>2909 LE Capelle a/d IJssel |
| Tel +32 (0)3 458 30 33   | Tel +31 (0)10 288 25 00                           |
| Fax +32 (0)3 458 31 26   | Fax +31 (0)10 288 25 25                           |

|               |               |
|---------------|---------------|
| info@alcom.be | info@alcom.nl |
| www.alcom.be  | www.alcom.nl  |

