



Featured supplier



The Internet of Things is creating new customer experiences and unparalleled economic value, while improving quality of life for countless people around the globe. By providing products and services to connect “things” to the Internet with data communication technology, MultiTech delivers deeper understanding to businesses, governments, organizations and individuals. Our products transform the way we live and work. Find out what makes MultiTech different as an IoT technology company.

*Communications solutions for  
the Internet of Things*



# Applications & Markets

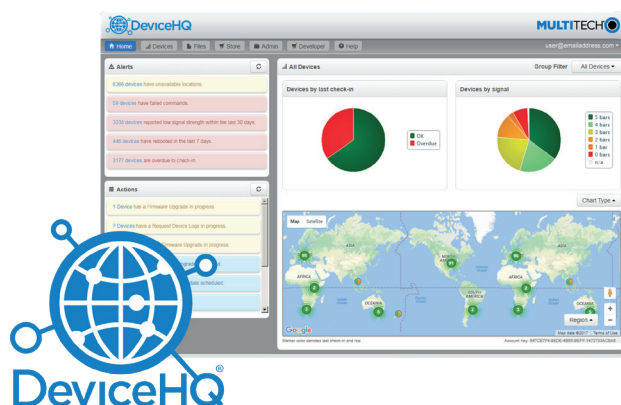
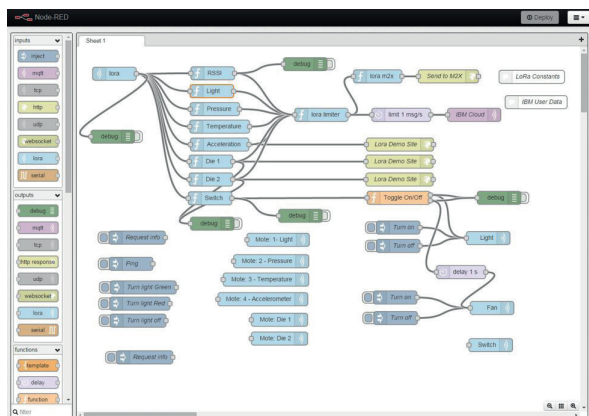


## IoT Starterkit for LoRa Technology



If you are considering using the potential of the low-power, wide area (LPWA) technology LoRa for your IoT application, then the MultiConnect® Conduit™ IoT Starter Kit for LoRa® Technology provides everything you need to create a LoRa proof of concept. This will enable you to bring LoRa wireless solutions to market as fast as possible. It contains all the hardware you need for out-of-the-box connectivity to leading IoT Cloud platforms.

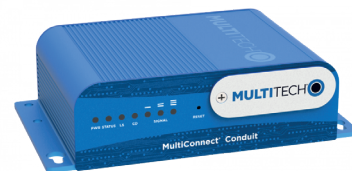
- Use the examples and libraries available on the MultiTech support website to create your own applications on the Arm® Mbed™ platform on the xDot or mDot.
- The IBM Node-RED graphical, drag-and-drop programming interface will allow you to easily add logic to your Conduit™ gateway
- Easily deploy and manage assets via DeviceHQ®, MultiTech's cloud-based tool set for managing the latest generation of MultiTech devices
- Do a quick site survey with the included mDot Box, which includes several sensors + GPS.



## MultiConnect® Conduit™ Programmable Gateway for the Internet of Things

The MultiConnect® Conduit™ is a quick-to-deploy and simple-to-scale, programmable gateway designed for the Internet of Things (IoT). Network connectivity choices to your preferred data management platform include carrier approved 4G-LTE, 3G, 2G and Ethernet.

Available options include a LoRaWAN™ Ready mCard capable of supporting thousands of LoRa RF modules connected to remote sensors or appliances. Development environments to suit all users including IBM's Node-RED, a graphical, drag and drop interface or mLinux™ Open Embedded/Yocto. Quick-to-deploy and easy to manage, the Conduit communications gateway realizes your IoT application.



## MultiConnect® Conduit™ IP67 Base Station IP67 Conduit for Outdoor LoRa® Deployments

The MultiConnect® Conduit™ IP67 Base Station (MTCDTIP Series) is a highly scalable, ruggedized IoT certified gateway solution, specifically designed for outdoor LoRa® public or private network deployments. This highly scalable and certified IP67 solution is capable of resisting the harshest environmental factors including moisture, dust, wind, rain, snow and extreme heat, supporting LoRaWAN™ applications in virtually any environment.



## MultiConnect® Conduit™ AP Indoor LoRa® Access Point

The MultiConnect® Conduit™ AP conveniently provides deep in-building connectivity and improved performance for network operators and enterprises connecting thousands of IoT assets by harnessing the power of the LoRaWAN™ protocol.



## MultiConnect® Cell 100 Series Cellular Modems for IoT

MultiConnect® Cell 100 Series cellular NB-IoT, LTE-M, 4G-LTE, 3G and 2G modems (MTC Series) are fully certified and carrier approved. Deliver secure remote data with multiple interface options for fixed and mobile assets.



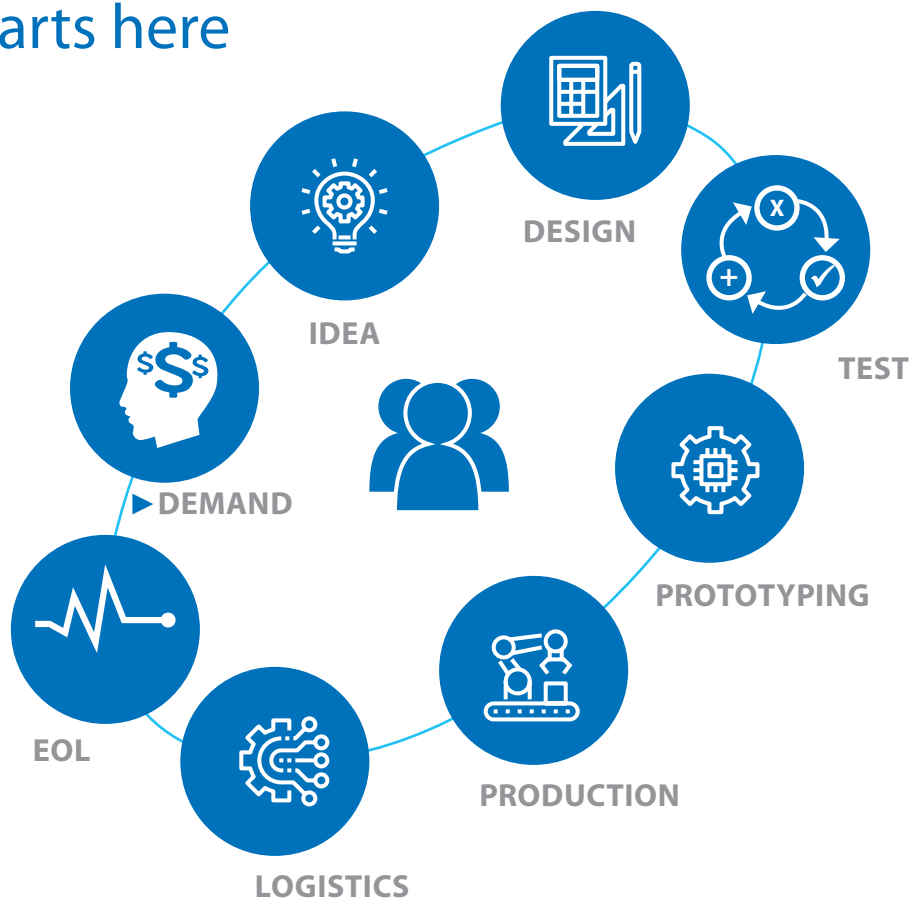
## MultiConnect® xDot™/ mDot™ Long Range LoRa® Modules (MTXDOT Series)

The MultiConnect® xDot™ and mDot™ are secure, CE/FCC/RCM certified, Arm® Cortex M3 Mbed™ user programmable, low-power RF modules, that provide long-range, low bit rate M2M data connectivity to sensors, industrial equipment and remote appliances.

xDots / mDots bring intelligence, reduced complexity and a lower overall bill of material cost to the very edge of the network while supporting a variety of electronic interfaces to connect just about any "Thing" for years on battery power.



# Co-creation starts here



ELECTRONIC COMPONENT SOLUTIONS	<ul style="list-style-type: none"> <li>• Semiconductors</li> <li>• Passives</li> <li>• Electromechanical</li> <li>• Photonics</li> </ul>	<ul style="list-style-type: none"> <li>• Wireless Modules</li> <li>• Wireless Boxed</li> <li>• Networking &amp; Connectivity</li> </ul>
WIRELESS & NETWORKING		
DISPLAY & TOUCH	<ul style="list-style-type: none"> <li>• Display</li> <li>• Touch</li> </ul>	<ul style="list-style-type: none"> <li>• LED</li> <li>• Solid State Lighting</li> </ul>
LED & SOLID STATE LIGHTING		
EMBEDDED COMPUTING	<ul style="list-style-type: none"> <li>• SBC, CPU &amp; IPC</li> <li>• Memory Storage</li> <li>• Rugged Mobile Computing</li> </ul>	<ul style="list-style-type: none"> <li>• Power Conversion</li> <li>• EMC</li> </ul>
POWER & EMC		

## Alcom Belgium Alcom Netherlands



Alcom electronics nv/sa	Alcom electronics bv
Singel 3 2550 Kontich	Rivium 1e straat 52 2909 LE Capelle a/d IJssel
Tel +32 (0)3 458 30 33 Fax +32 (0)3 458 31 26	Tel +31 (0)10 288 25 00 Fax +31 (0)10 288 25 25
info@alcom.be www.alcom.be	info@alcom.nl www.alcom.nl