

# DIGI



Manage this device with  
Digi Remote Manager

**OnGo**  
Powered by the CBRS Alliance

## DIGI IX10

### Rugged, reliable, cost-effective connectivity for critical industrial applications

Digi IX10 is a full-featured cellular router built for trouble-free reliability over a long service life. Its flexible power and connectivity options make it a versatile and cost-effective choice for industrial, digital signage, ATMs, lottery terminals, kiosks and other unattended retail applications that need to provide secure transactions over public and private cellular networks.

Digi IX10 can operate on public and private LTE networks, with features to assist in network control and management, such as dual SIMs for cellular failover connectivity, VLAN support, load balancing between cellular and Ethernet WANs, dual APNs and configurable APN search.

Digi IX10 features one Ethernet port and one RJ-45 serial port supporting both RS-232 and RS-485.

Gain critical insights into your deployed devices and manage your network with Digi Remote Manager® (Digi RM) — the command center for your deployment. Digi RM is a cloud-based solution that facilitates easy setup, mass configuration, maintenance and support, even for thousands of devices. Digi RM empowers you to evaluate, update and configure your Digi products, while providing easy visibility into the health of your network. It also offers low-touch and no-touch provisioning.

In the event of an interruption to your primary network connection, Digi RM also provides secure out-of-band management of edge devices via Digi IX10's serial port and command-line interface.

Digi IX10 offers the convenience of a global SKU for simplified global distribution and deployment, as well as cost-optimized SKUs for North America, including a CBRS-only SKU.

#### FEATURES AND BENEFITS

- Compact and economical connectivity solution with industrial feature set for public and private cellular networks
- Redundant connectivity with dual SIMs and Digi SureLink®
- Global and regional bands with single part number to simplify distribution, deployment and management
- Built-in Digi TrustFence® for device security, device identity and data privacy
- Digi Remote Manager® platform for easy setup, mass configuration and out-of-band management
- Ethernet port and single RJ-45 serial port (RS-232/485)

#### RELATED PRODUCTS



Digi IX20



Digi IX30



Digi TX40

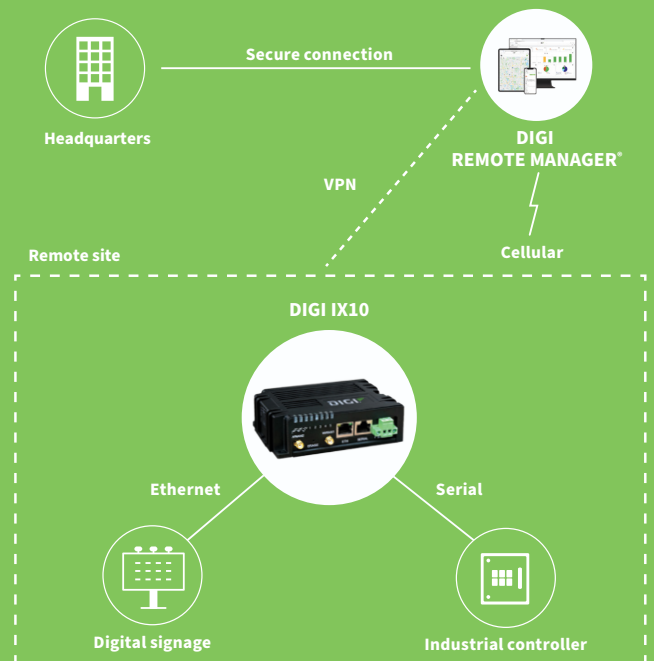


Digi TX54



Digi Remote Manager®

#### APPLICATION EXAMPLE



**Alcom**  
electronics

Singel 3 | B-2550 Kontich | Belgium | Tel. +32 (0)3 458 30 33  
info@alcom.be | www.alcom.be  
Rivium 1e straat 52 | 2909 LE Capelle aan den IJssel | The Netherlands  
Tel. +31 (0)10 288 25 00 | info@alcom.nl | www.alcom.nl

## SPECIFICATIONS

## DIGI IX10

## CELLULAR

## CERTIFICATIONS

Visit [www.digi.com/resources/certifications](http://www.digi.com/resources/certifications) for latest certifications

## LTE CAT 4 GLOBAL (G4)

LTE Cat 4 Global: B1, B2, B3, B4, B5, B7, B8, B12, B13, B18, B19, B20, B25, B26, B28, B38, B39, B40, B41;  
3G: B1, B2, B4, B5, B6, B8, B19;  
2G EDGE / GPRS: 850 / 900 / 1800 / 1900 MHz

## LTE CAT 4 REGIONAL — NORTH AMERICA (N4)

LTE Cat 4 Regional — North America: B2, B4, B5, B12, B13, B14, B66, B71;  
3G: B2, B4, B5

## LTE-ADVANCED CAT 6 CBRS-ONLY — NORTH AMERICA (C6)

LTE-Advanced Cat 6 CBRS-only — North America: B42, B43, B48 (CBRS)

## SIM SLOTS

(2) Mini-SIM (2FF)

## SIM SECURITY

Behind SIM cover, secured with screw (#1 Phillips)

## SOFTWARE AND MANAGEMENT

## REMOTE MANAGEMENT

Digi Remote Manager®; SNMP v2/v3 (user installed/managed)

## LOCAL MANAGEMENT

WebUI (HTTP/HTTPS); CLI (SSH)

## MANAGEMENT/ TROUBLESHOOTING TOOLS

FTP client, SCP; protocol analyzer with PCAP for Wireshark; event logging with syslog and SMTP client; NTP/SNTP; Nagios, Intelliflow, iPerf, Dynamic DNS, ping, traceroute

## MEMORY

256 MB RAM, 256 MB flash

## ETHERNET

## PORTS

(1) RJ-45; 10/100 Mbps (auto-sensing)

## SERIAL

## PORTS

(1) RJ-45 10-pin (10P10C); RS-232/485; software selectable  
- RS-232 DTE (RXD, TXD, RTS, CTS, DTR, DCD, DSR, RI)  
- RS-485 (TX/RX+; RX/TX-); half-duplex

## PHYSICAL

## DIMENSIONS (L x W x H)

118 mm x 88 mm x 35 mm (4.65 in x 3.46 in x 1.38 in)

## WEIGHT

0.39 kg (0.86 lb)

## STATUS LEDs

Power, Internet, SIM 1, SIM 2, SIM fail, LTE, signal strength (5)

## ENCLOSURE

Glass-filled polyphenylene sulphide (PPS) / IP30

## POWER REQUIREMENTS

## POWER INPUT

9 - 30 VDC, 1.0 A maximum

## POWER CONSUMPTION

Configurable low-power modes; 1.5 W (light traffic flow), 2.5 W (peak data transmission); 1.25 W (low power mode, idle traffic)

## ACCESSORIES

## AVAILABLE ACCESSORIES

Accessories not included. Available accessories: industrial extended temperature or commercial power supply (required), and cellular antennas, DIN rail clip and EIA 422/485 to RJ-45 connector (recommended / optional)

## ENVIRONMENTAL

## OPERATING TEMPERATURE

-40 °C to 70 °C (-40 °F to 158 °F); device performance may be impacted above 50 °C (122 °F)

## STORAGE TEMPERATURE

-40 °C to 85 °C (-40 °F to 185 °F)

## RELATIVE HUMIDITY

5% to 95% (non-condensing)

## APPROVALS

## CELLULAR

Visit [www.digi.com/resources/certifications](http://www.digi.com/resources/certifications) for latest cellular certifications

## SAFETY

IEC 62368-1, CB, EN6 2311

## ENVIRONMENTAL

ROHS3

## EMISSIONS / IMMUNITY

CE; RED; FCC Part 15, Subpart B; ICES-003; AU/NZS CISPR32

## WARRANTY

## PRODUCT WARRANTY

3-year\*

\*Standard 3-year warranty upgradeable to 5 years with purchase of a Digi Remote Manager Premier 5-year subscription applicable to the product purchased only at the time of product purchase and with product registration at that time in Digi Remote Manager.

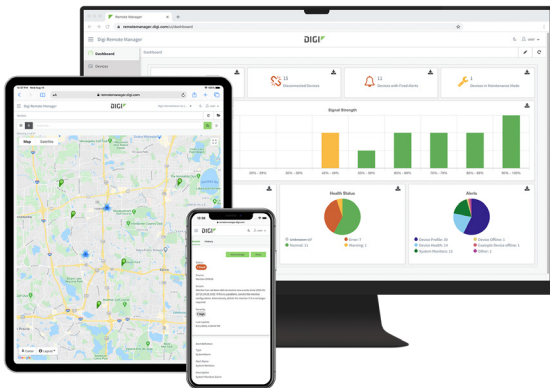
## ENTERPRISE SOFTWARE

## DESCRIPTION

### CELLULAR CONNECTIVITY

<b>PROTOCOL SUPPORT</b>	HTTPS, FTP client, TLS v1.2, SCP (client and server), SFTP, SMTP client for use by scripts and the command line, SNMP (v2/v3), SSH; remote management via <b>Digi Remote Manager</b> <sup>®</sup> ; protocol analyzer, ability to capture PCAP for use with Wireshark; DynDNS; dynamic DNS client compatible with BIND9/No-IP/DynDNS; captive portal, Intelliflow; Nagios, DNS server, NTP server, multicast, mDNS, IPerf
<b>SECURITY</b>	IP filtering, stateful firewall, custom firewall rules (iptables), address and port translation; TLS 1.2 and above, OpenVPN client and server; VPN tunnels; Authentication: RADIUS, TACACS+; certificates; MAC address filtering; VLAN support
<b>VPN</b>	IPSec with IKEv1, IKEv2, NAT Traversal; OpenVPN client and server; GRE VPN tunnels; Cryptology: SHA-1/256/384/512, MD5, RSA; Encryption: 3DES and AES up to 256-bit (CBC mode for IPsec); Diffie Hellman: DH groups 1-32 (CURVE448)
<b>ROUTING / FAILOVER</b>	IP pass-through; NAT, NAPT with IP port forwarding; GRE; multicast routing; Routing protocols: RIP (v1, v2) OSPF, BGP; IP failover: VRRP; automatic failover, <b>Digi SureLink</b> <sup>®</sup>
<b>OTHER PROTOCOLS</b>	DHCP; dynamic DNS client compatible with No-IP/DynDNS

## DIGI REMOTE MANAGER<sup>®</sup>



**Digi Remote Manager**<sup>®</sup> is the technology platform that brings networks to the next level, allowing networks — and the people who manage them — to work smarter. With **Digi Remote Manager** you can transform a multitude of dispersed IoT devices into a dynamic, intelligent network. Now you can easily deploy, monitor and diagnose thousands of mission-critical devices from a single point of command — on your desktop, tablet or phone. All the while, its software-defined security diligently safeguards your entire Digi ecosystem.

Learn more at [www.digi.com/digi-remote-manager](http://www.digi.com/digi-remote-manager)

### CAPABILITIES

- Activate, monitor and diagnose your mission-critical devices from a single point of command and control
- Schedule key operations — including firmware updates and file management — on a single device or on a group of devices, keeping your network functionality up-to-date and maintaining compliance standards
- Manage edge devices out-of-band via console terminal access
- Keep tabs on device health and connectivity across device deployments of any size
- Create detailed reports and enable real-time alerts for specified conditions
- Integrate device data through open APIs to gain deeper insights and control with third-party applications
- Report and alert on performance statistics, including connection history, signal quality, latency, data usage and packet loss

### INFRASTRUCTURE

- Hosted in a commercial-grade cloud server environment that meets SOC 1<sup>®</sup>, SOC 2<sup>®</sup> and SOC 3<sup>®</sup> standards
- Superior availability, operating to 99.9% or greater
- Open APIs available to support application development

### SECURITY

- More than 175 security controls in place to protect your data
- Member of the Center for Internet Security<sup>®</sup> (CIS<sup>®</sup>)
- Enables compliance with security frameworks like ISO27002, HIPAA, NIST and more
- Earned Skyhigh's CloudTrust<sup>™</sup> Program highest rating of Enterprise-Ready

## PART NUMBERS

## DIGI REMOTE MANAGER<sup>®</sup>

<b>DIGI-RM-STD-1YR</b>	Digi Remote Manager Standard — 1-year subscription
<b>DIGI-RM-PRM-1YR</b>	Digi Remote Manager Premier — 1-year subscription
<b>DIGI-RM-PRM-3YR</b>	Digi Remote Manager Premier — 3-year subscription
<b>DIGI-RM-PRM-5YR</b>	Digi Remote Manager Premier — 5-year subscription

## PRODUCT IMAGES

FRONT



BACK



### PART NUMBERS

### DIGI IX10

#### DIGI IX10 MODELS

IX10-00G4	Digi IX10 — LTE Cat 4 Global, Ethernet, RS-232/485
IX10-00N4	Digi IX10 — LTE Cat 4 Regional (North America), Ethernet, RS-232/485
IX10-00C6	Digi IX10 — LTE-Advanced Cat 6 CBRS-only (North America), Ethernet, RS-232/485

### PART NUMBERS

### AVAILABLE ACCESSORIES\*

#### REQUIRED ACCESSORIES (INDUSTRIAL OR COMMERCIAL POWER SUPPLY)

76002104	Industrial extended temperature power supply with plug tips for US, UK, EU, AU; -20 °C to 70 °C (-4 °F to 158 °F)
76002117	Commercial temperature power supply with plug tips for US, UK, EU, AU; 0 °C to 40 °C (32 °F to 104 °F)

#### RECOMMENDED AND OPTIONAL ACCESSORIES

76002103	(1) Cellular antenna, order quantity 2
76002095	DIN rail clip kit
76000723	Connect EIA 422/485 devices to Digi products that have 10-pin RJ-45 connectors**

\*Accessories not included with IX10 models unless otherwise noted.

\*\*For RS-232 cabling pinouts and recommended cables, please refer to the Digi products cabling guide at: [www.digi.com/resources/documentation/Digidocs/PDFs/90000253.pdf](http://www.digi.com/resources/documentation/Digidocs/PDFs/90000253.pdf)

FOR MORE INFORMATION  
PLEASE VISIT [DIGI.COM](http://DIGI.COM)

**DIGI SERVICE AND SUPPORT** / You can purchase with confidence knowing that Digi is always available to serve you with expert technical support and our industry leading warranty. For detailed information visit [www.digi.com/support](http://www.digi.com/support).

© 1996-2022 Digi International Inc. All rights reserved.  
All trademarks are the property of their respective owners.

91004436  
C1/1122

**DIGI INTERNATIONAL WORLDWIDE HQ**  
877-912-3444 / 952-912-3444 / [www.digi.com](http://www.digi.com)

**DIGI INTERNATIONAL JAPAN**  
+81-3-5428-0261 / [www.digi-intl.co.jp](http://www.digi-intl.co.jp)

**DIGI INTERNATIONAL GERMANY**  
+49-89-540-428-0

**DIGI INTERNATIONAL SINGAPORE**  
+65-6213-5380

**DIGI INTERNATIONAL CHINA**  
+86-21-50492199 / [www.digi.com.cn](http://www.digi.com.cn)

