

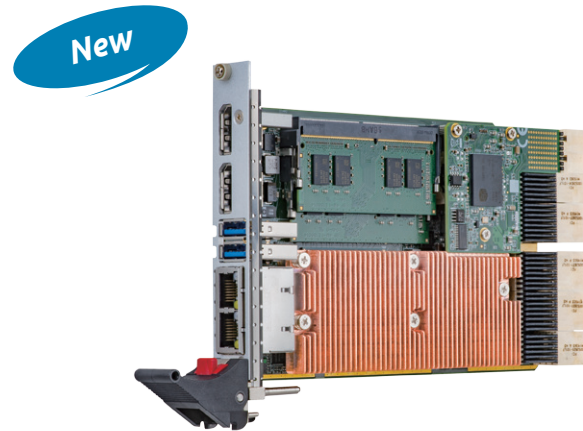
cPCI-A3525 Series

3U CompactPCI Serial 9th Gen Intel® Xeon®/Core™ i7 Processor Blade

Features

- PICMG® cPCI-S.0 CompactPCI® Serial Processor Blade
- 14nm multi-core 9th Gen Intel® processor, (Formerly Coffee Lake Refresh)
- Max. 32GB DDR4-2666 by 2x SODIMM
- Supports 2x PCIe x8 Gen 3 and 2x PCIe x4 Gen 3
- Up to 10x USB 2.0/3.0, up to 7x SATA to rear

**CompactPCI®
Serial**



Specifications

• Processor & System

CPU

Intel® Xeon® E-2276ML 2.8/4.7GHz, 6C/12T, 12M Cache, 45W
 9th Gen Intel® Core™ i7-9850HL 6C/12T, 25W
 9th Gen Intel® Core™ i7-9850HE 6C/12T, 45W/35W

Chipset

Intel® CM246 Chipset

Memory

DDR4-2666 dual bank SODIMM memory, up to 32GB
 Supports ECC memory (dependent on processor)

BIOS

AMI UEFI BIOS, dual 128Mb SPI flash memory

BMC

Supports ADLINK SEMA 4.0

PICMG Standards

CompactPCI® Serial Rev 2.0

• Front Panel Connectivity

Graphics

2x dual-mode DisplayPort via Intel processor internal graphics engine

Ethernet

2x 1G BASE-T via RJ-45
 1x Intel® Ethernet Connection I219-LM, 1x Intel® Ethernet Controller I210-AT

USB

2x USB 3.0 connectors

• Rear I/O

PCIe

1x PCIe x8 Gen3 via P1 & P2
 1x PCIe x8 Gen3 via P2
 1x PCIe x2 Gen3 via P4
 2x PCIe x4 Gen3 via P5

SATA

Max. 7x SATA to rear

USB

2x USB 3.0 + 8x USB 2.0

Ethernet

Optional 2x Ethernet ports by 2x PCIe x1, via adapter board (DB-P620)

• Storage

Onboard

Optional 1x onboard SSD, up to 128GB via adapter board (DB-P620)

• Operating System

Windows 10
 Linux
 Other OS upon request
 (Please contact your ADLINK representative)

Specifications

• Miscellaneous

LED

- 1x Power status LED
- 1x SATA status LED
- 1x WDT status LED, controlled by BMC
- 1x Overtemp LED
- 1x General purpose LED, controlled by BMC

Wathdog Timer

System Reset and NMI, with programmable interval, 1-65535 sec or 1-65535 minutes

Hardware Monitor

Monitors CPU temperature, system temperature and DC voltages by SEMA

TPM

Support via adapter board

Battery

Coin cell battery for RTC TBD

• Mechanical & Environmental

Form Factor

3U 4HP 1-slot CompactPCI Serial blade
160mm x 100mm (LxW)
Equipped with P1, P2, P3, P4, P5
P6 supported by optional daughter board

Operating Temp.

Operating temperature: 0°C to 60°C

Storage Temp.

-40°C to +85°C

Relative Humidity

95% non-condensing

Shock

20G peak-to-peak, 11ms duration, operating

Vibration

2Grms random vibration, 5 to 500Hz in 3 axes, operating

• Safety & EMI

Certifications

CE/FCC

cPCI-A3525 Series

I/O Table

		Display	GbE	USB 2.0	USB 3.0	PCIe	SSD	SATA
		SBC						
cPCI-A3525 (4HP)	Faceplate	2 (DP)	2		2			
	Onboard						1 ⁽¹⁾ (optional)	
	Rear		2 (optional)	8	2	2x PCIe x8 2x PCIe x4 1x PCIe x2		7

(1) Available with SSD daughter board.

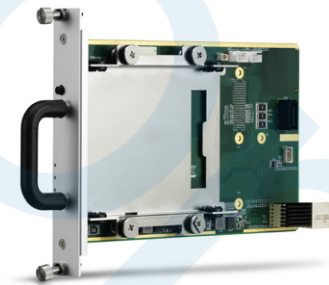
Ordering Information

- cPCI-A3525/9850/M16/S128**
 1-slot (4HP) 3U CompactPCI Serial blade with Intel® Core™ i7-9850HL processor and 2x 8GB DDR4-2666 SODIMM, 2x DP, 2x GbE, 2x USB 3.0 and onboard 128GB SSD
- cPCI-A3525/9850/M16**
 1-slot (4HP) 3U CompactPCI Serial blade with Intel® Core™ i7-9850HL processor and 2x 8GB DDR4-2666 SODIMM, 2x DP, 2x GbE and 2x USB 3.0
- cPCI-A3525/2276/M16/S128**
 1-slot (4HP) 3U CompactPCI Serial blade with Intel® Xeon® E-2276ML processor and 2x 8GB DDR4-2666 SODIMM, 2x DP, 2x GbE, 2x USB 3.0 and onboard 128GB SSD
- cPCI-A3525/2276/M16**
 1-slot (4HP) 3U CompactPCI Serial blade with Intel® Xeon® E-2276ML processor and 2x 8GB DDR4-2666 SODIMM, 2x DP, 2x GbE and 2x USB 3.0

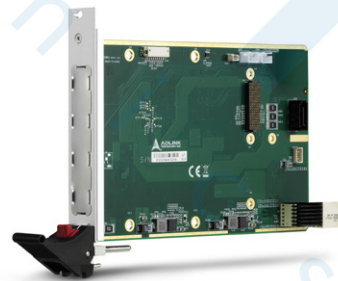
Accessories

- DP-DVI cable**
 DisplayPort to DVI adapter cable
- DP-VGA cable**
 DisplayPort to VGA adapter cable
- DP-HDMI cable**
 DisplayPort to HDMI adapter cable
- cPCI-A3H10**
 3U CompactPCI Serial 2.5" SATA storage carrier with hot-swap support, anti-shock and anti-vibration storage kit
- cPCI-A3X10**
 3U CompactPCI Serial XMC module carrier

Contact us for different CPU, memory, SSD/HDD and mSATA combinations.



cPCI-A3H10



cPCI-A3X10