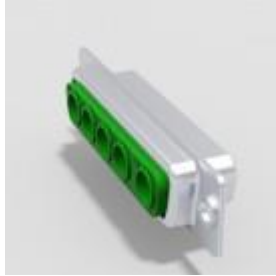


Combi- Mixed D-Sub

Combi- Mixed- or Hybrid D-Sub connectors offer, as the name implies, a mixing of the contacts in the same insulating body. Due to the design, combinations with signal, - high current, - high voltage, - coaxial, and pneumatic contacts are possible within the connector. A variety of different combinations as a socket or plug are available in five different housing sizes. The dimensions correspond to the standards IEC 60807 (DIN 41652) and MIL-C-24308. The insulating body, a monoblock, complies with the UL94 V-0 standard. The contacts are machined and available in several quality classes.



Combi Empty



Combi Solder Cup



Combi Solder Cup Power IP67



Combi Empty Assembled 90°, 9.4



Combi Solder Cup Assembled



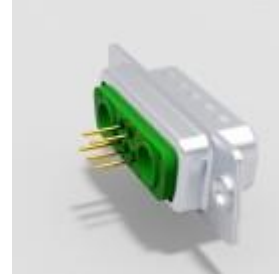
Combi Solder Cup Power IP68



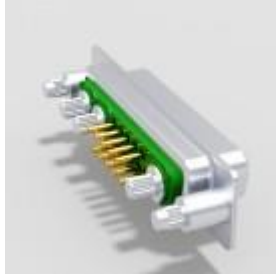
Combi Empty Assembled Straight



Combi Solder Cup Power



Combi Solder Pin



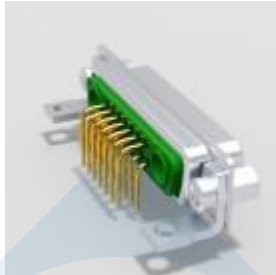
Combi Press Fit Assembled



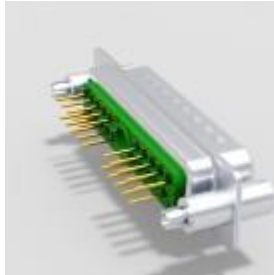
Combi Solder Cup Power Assembled



Combi Solder Pin 90°, 7.18



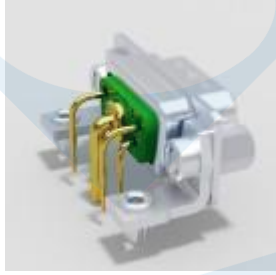
Combi Solder Pin 90°, 7.18 Assembled



Combi Solder Pin Assembled



Combi Solder Pin Power IP67



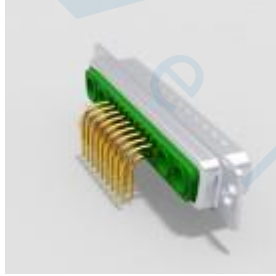
Combi Solder Pin 90°, 7.18 Power Assembled



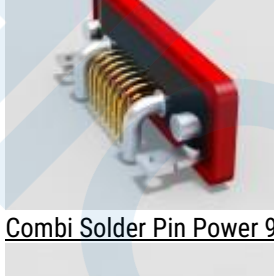
Combi Solder Pin Power



Combi Solder Pin Power IP68



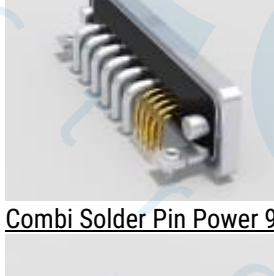
Combi Solder Pin 90°, 9.4



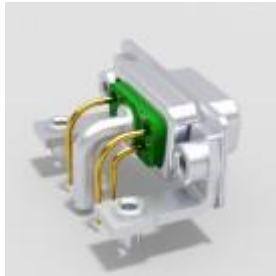
Combi Solder Pin Power 90°, IP67



Combi Solder Pin 90°, 9.4 Assembled



Combi Solder Pin Power 90°, IP68



Combi Solder Pin 90°, 9.4 Power Assembled



Combi Solder Pin Power Assembled