

Agile Line Series Products

Value-Packed Quality, Lightning fast Delivery
 Powered by 11th Intel® Core™ Processor

Avalue introduces the Agile Line series products, powered by 11th Intel® Core™ Processor to achieve optimal performance with minimum power consumption. Agile Line products come with amazingly speedy delivery and superior product quality. This series products can significantly shorten the delivery time with shipments within 5 days of order receipt and enjoy a 3-year life cycle guarantee, which enable customers to seize market opportunities and respond in time.

Speedy

Ready-to-ship inventory
 Ship within 5 days of order receipt

Quality

Low power consumption with optimizing performance

Efficiency

Competitive TCO
 Full service logistics from shipping to RMA

Warranty

High stand verification and validation



KIOSK

Reliability & Durability
 Versatile Connectivity
 Security & Stability



HMI

Time-to-market
 Highly Integration
 Low Power Consumption



Signage

Versatile Connectivity
 Low Power Consumption



Gaming

Versatile Connectivity
 Security & Stability



ARC-1738-C

11th Generation Intel® Core™ i5/i3 Processors
17" Fanless Rugged Multi-Touch Panel PC

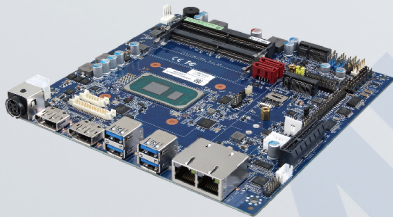
- 1 x 2.5GbE, 1 x 1GbE
- 4 x USB3.2 Gen 2, 3 x COM, 2 x DP++ Output
- 1 x 2.5" SATA HDD/SSD Storage
- 1 x M.2 Key-B for 5G Module or Storage, 1 x M.2 Key-E for WIFI
- DC in +12~24V, 120W Power Adapter
- Onboard TPM2.0



APC-2138

11th Generation Intel® Core™ i5/i3 Processors
21.5" Expandable Ultra Light Multi-Touch Fanless Panel PC

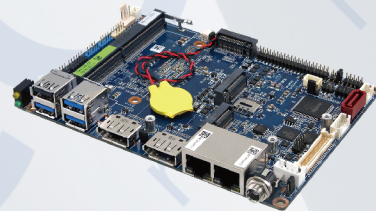
- 1 x 2.5GbE, 1 x 1GbE
- 4 x USB 3.2 Gen 2
- 1 x 2.5" SATA HDD/SSD Storage
- 1 x M.2 Key-B for WWAN or SSD, 1 x M.2 Key-E for WIFI
- DC in +12~24V
- Front IP65 Waterproof Protection



EMX-TGLC

11th Generation Intel® Core™ i5/i3 Processors
Thin Mini ITX Motherboard

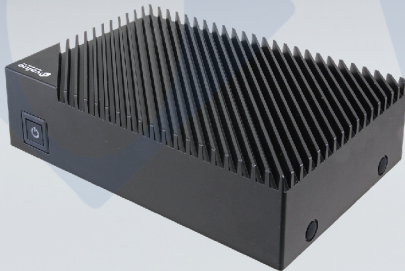
- Triple Display: 2 x DP++, 1 x 2CH LVDS or eDP
- 1 x 2.5GbE, 1 x 1GbE
- Expansion Slot: 1 x M.2 Key-B, 1 x M.2 Key-E
- 2 x RS-232/422/485, 4 x RS232
- TPM 2.0, 16-bit GPIO
- DC in +12~24V



ECM-TGUC

11th Generation Intel® Core™ i5/i3 Processors
3.5" Micro Module

- Triple Display: 2 x DP++, 1 x 2CH LVDS or eDP
- 1 x 2.5GbE, 1 x GbE
- Expansion Slot: 1 x M.2 Key-B, 1 x M.2 Key-E, 1 x M.2 Key-M
- 1 x RS-232/422/485, 5 x RS232
- TPM 2.0, 8-bit GPIO
- DC in +12~24V



ACS10-TGU

11th Generation Intel® Core™ i5/i3 Processors Compact System

- Powerful & Low Power Processor
- No Vents, No Dust Accumulation
- No Fan, No Maintenance Cost
- Industrial Quality, 7day, 24 hours Reliable
- Compact Size, 180 x 120 x 48mm
- Passive Cooling, 0°C ~ 50°C

