



MEDIPOWER™ II

175VA ONLINE MEDICAL UPS INVERTER/CHARGER

The MediPower™ II 175VA online UPS is a reliable and efficient double conversion pure sine wave Inverter/Charger solution for supplying backup AC power needs in medical equipment. The Inverter/Charger operates on universal 90-264VAC standard wall power and provides an output of 120VAC 60Hz 175VA, while also rapidly charging a 12VDC 50Ahr battery in less than 2.5 hours. The MediPower™ II is optionally managed by digital communication and control. Lithium iron phosphate battery type is recommended.



FEATURES

AC UNIVERSAL INPUT

90-264Vac, 47-63Hz

AC OUTPUT

Output Voltage: 120VAC/60hz pure sine-wave
Output Current: 1.46Arms @ 120Vac
Output Power: 175VA

ISOLATION LEVEL

AC Input to Output: 4000VAC
AC Input to Chassis:1500VAC
AC Output to Chassis:1500VAC
DC Input to Chassis: 100VDC

SAFETY CERTIFICATION

Fully Integrated UL/IEC60601-1 Mobile Power System

RAPID RECHARGE

2.5 Hours

350W CHARGER

Simultaneously charges the battery while running the system

CONTINUOUS ON-LINE OPERATION

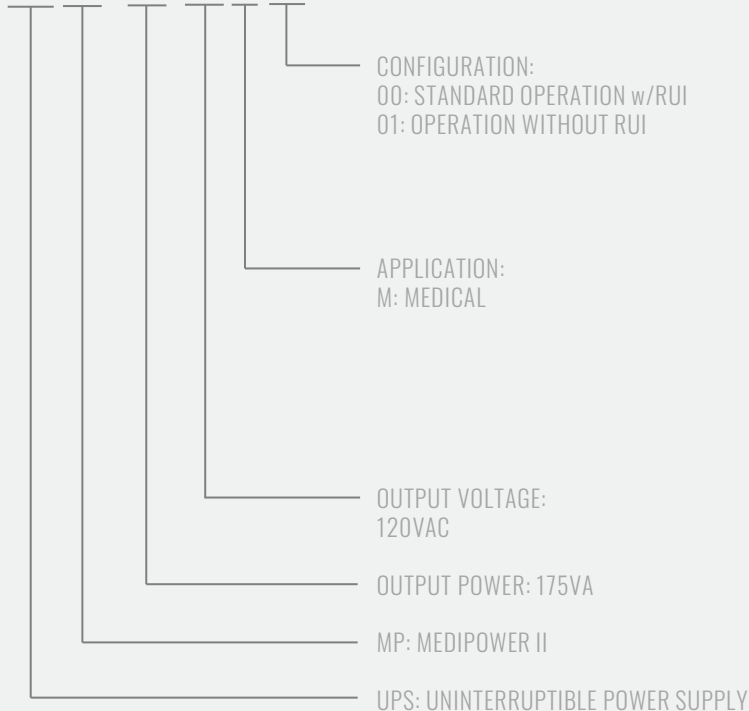
Increases reliability and eliminates long-term mechanical failures

STANDARD API

Integrates directly into Windows USB Battery drivers

HOW TO ORDER

UPSMP0175-120M-00





MEDIPOWER™ II

175VA ONLINE MEDICAL UPS INVERTER/CHARGER

SPECIFICATIONS

MEDIPOWER™ II

AC Main Connection	Nominal: 100-240Vac Operational: 90-264Vac
AC Frequency	47-63Hz
Max AC Input Current	1.46 Arms @ 120Vac
Power Factor/Harmonic Correction	Compliant to EN 61000-3-2:2014
Inrush Current (Typ)	Input inrush current limiting provided to limit 1 cycle peak current to 40 amps
AC Connection Type	The system provides a true sine wave AC output via a single IEC60320 C13 style IEC cable
AC (Pure Sine Wave)	120VAC/60hz pure sine-wave
AC Frequency (Out)	57-63 Hz
AC Output Current	1.46Arms @ 120Vac
Power	175 VA rated and maximum
Line regulation (from AC or DC)	Less than + 2% from max. to min. battery operational range
Load regulation	Less than + 3 % from no load to full load
AC Connection Type	IEC 60320 - C13
AC Cord Length	8"
Total Harmonic Distortion	3% max. (Resistive load)
Input Surge Protection	Internal MOV protects the circuitry from AC mains power line disturbances
Input Over-Current	Internal dual fuse protection
AC Output Overcurrent	110% of rated maximum current
DC Voltage	10.8V
Battery Type	Lithium Iron Phosphate (LiFePO4) long life
Charge & Supply Load	Simultaneously
Typical Charge Time	2.5 Hours from 0-90% SOC for 550Whr battery
Operating Temperature	Operating: 0 to +40°C
Humidity (non-condensing)	Operation/Storage: 0% - 95% non-condensing
Storage Temperature	Storage: -10°C to +55°C. (Exclusive of batteries)
Over Temperature Protection	PSU temperature at 65°C -> charger current halved PSU temperature at 75°C -> over-temperature -> unit shutdown



MEDIPOWER™ II

175VA ONLINE MEDICAL UPS INVERTER/CHARGER

SPECIFICATIONS

MEDIPOWER™ II

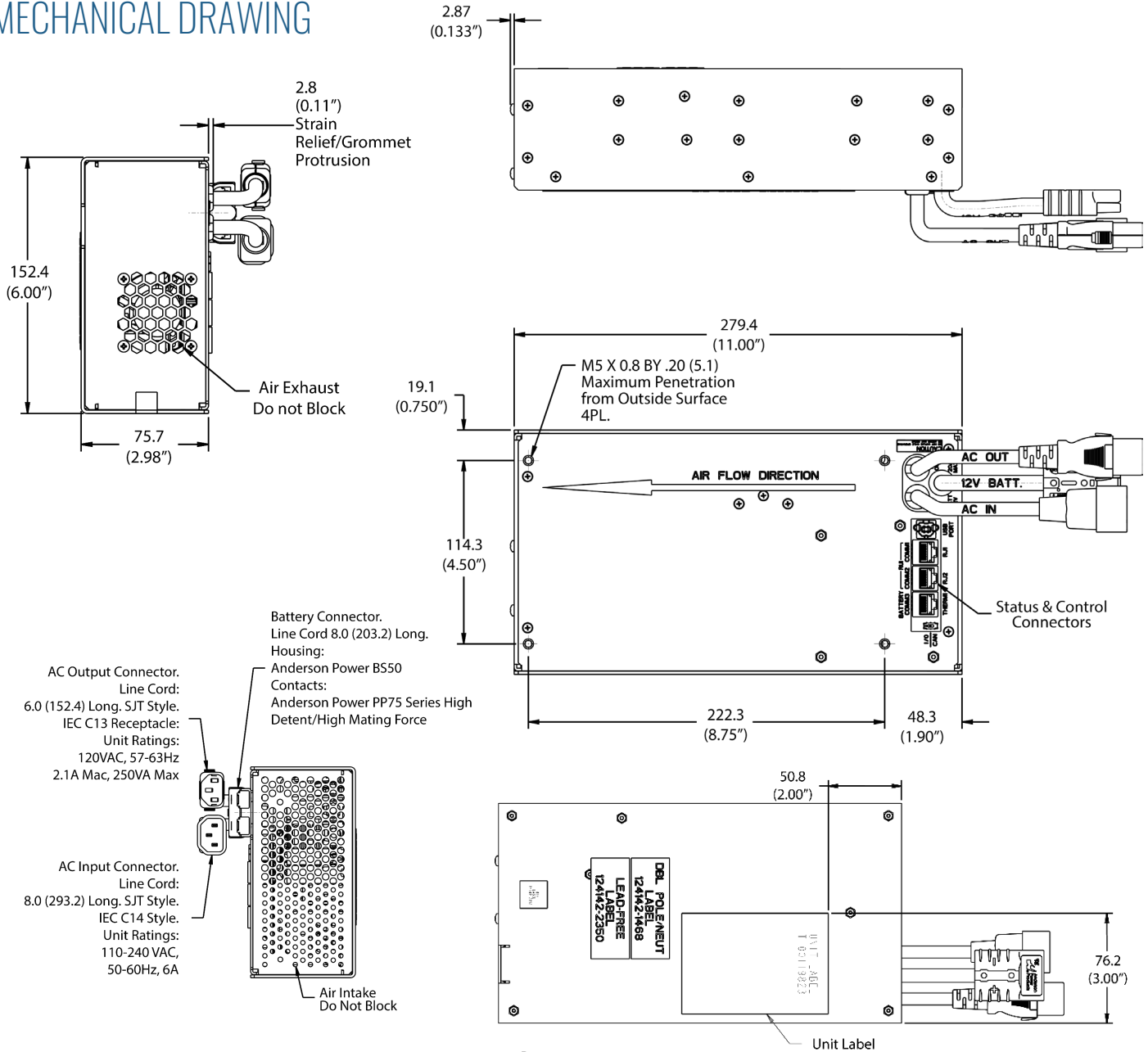
Construction	Enclosed Rugged Aluminum
Power Supply Dimensions (D x H x W)	PSU: 11.0" x 3.0" x 6.0" nominal (280mm x 76mm x 152mm)
RUI Dimensions (Optional) (D x H x W)	RUI: 3.74" x 2.23" x 3.53" (95mm x 57mm 90mm)
Power Supply Weight	PSU: 5.60 lbs Packaged for Shipment: 8.30 lbs
Cooling	Variable speed internal long-life ball-bearing fan
Isolation Level	AC Input to Output: 4000VAC AC Input to Chassis:1500VAC AC Output to Chassis:1500VAC DC Input to Chassis: 100Vdc
Marking	Certified NRTL before shipment
Safety & EMC Standard	Designed to meet FCC Class A , EN55011:2016/A11:2020, EN55032:2016, and EN IEC 61000-4-3:2020 Tested to IEC 60601-1-2, EN 61000-3-2:2014, EN 61000-4-2:2008, and BS EN 61000-4-4:2012
RoHS/WEEE	Compliance with the RoHS Directive as set forth by the European Union Electrical and Electronic Equipment covered by the WEEE
Communication Jacks	RUI module connects to PSU's COM1 and COM2 RJ45 jacks using two Ethernet patch cables
Battery Communication Port	Modbus and Smbus protocols



MEDIPOWER™ II

175VA ONLINE MEDICAL UPS INVERTER/CHARGER

MECHANICAL DRAWING



PART NUMBER

MODEL NUMBER

DESCRIPTION

PART NUMBER	MODEL NUMBER	DESCRIPTION
T100119396-LF	UPSMP0170-120M-00	MediPower™ II Inverter, AC/AC, 120VAC, 175W, 120VAC
T100126152-LF	UPSMP0170-120M-01	MediPower™ II Inverter, AC/AC, 120VAC, 175W, 120VAC, No RUI



MEDIPOWER™ II

175VA ONLINE MEDICAL UPS INVERTER/CHARGER

OPTIONAL RUI MECHANICAL DRAWING

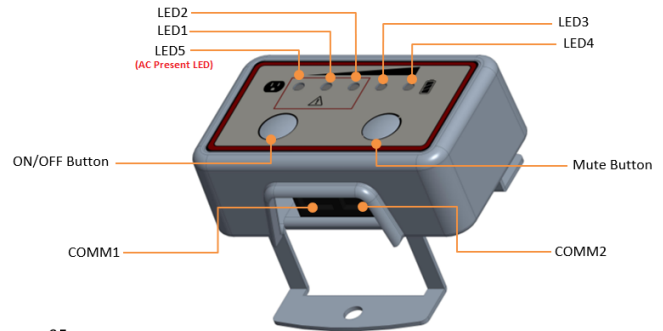
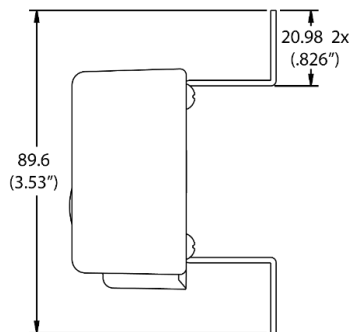
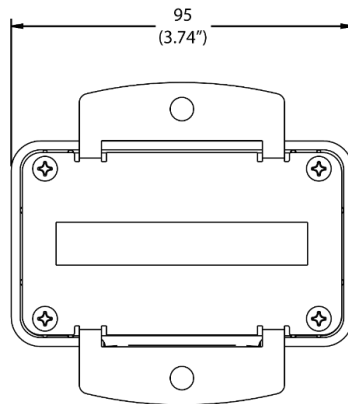
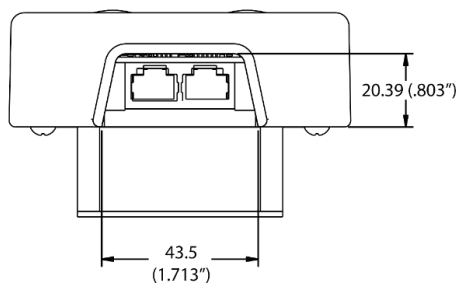
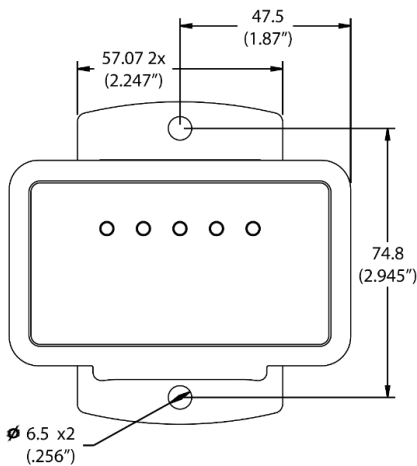
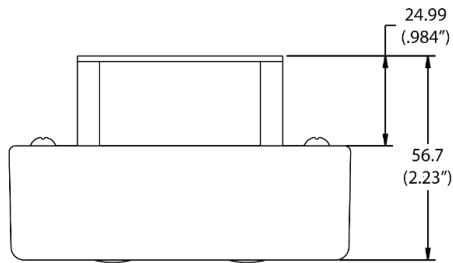


Figure 6 RUI Layout

Alcom electronics
A STELIU COMPANY ●●●

Singel 3 | B-2550 Kontich | Belgium | Tel.+32(0)3 458 30 33
 info@alcom.be | www.alcom.be
 Rivium 1e straat 52 | 2909 LE Capelle aan den IJssel | The Netherlands
 Tel.+31(0)10 288 25 00 | info@alcom.nl | www.alcom.nl

PART NUMBER	MODEL NUMBER	DESCRIPTION
T100120094-LF	SPS6190-LF	MediPower™ II, Remote User Interface Assembly for 175W Inverter