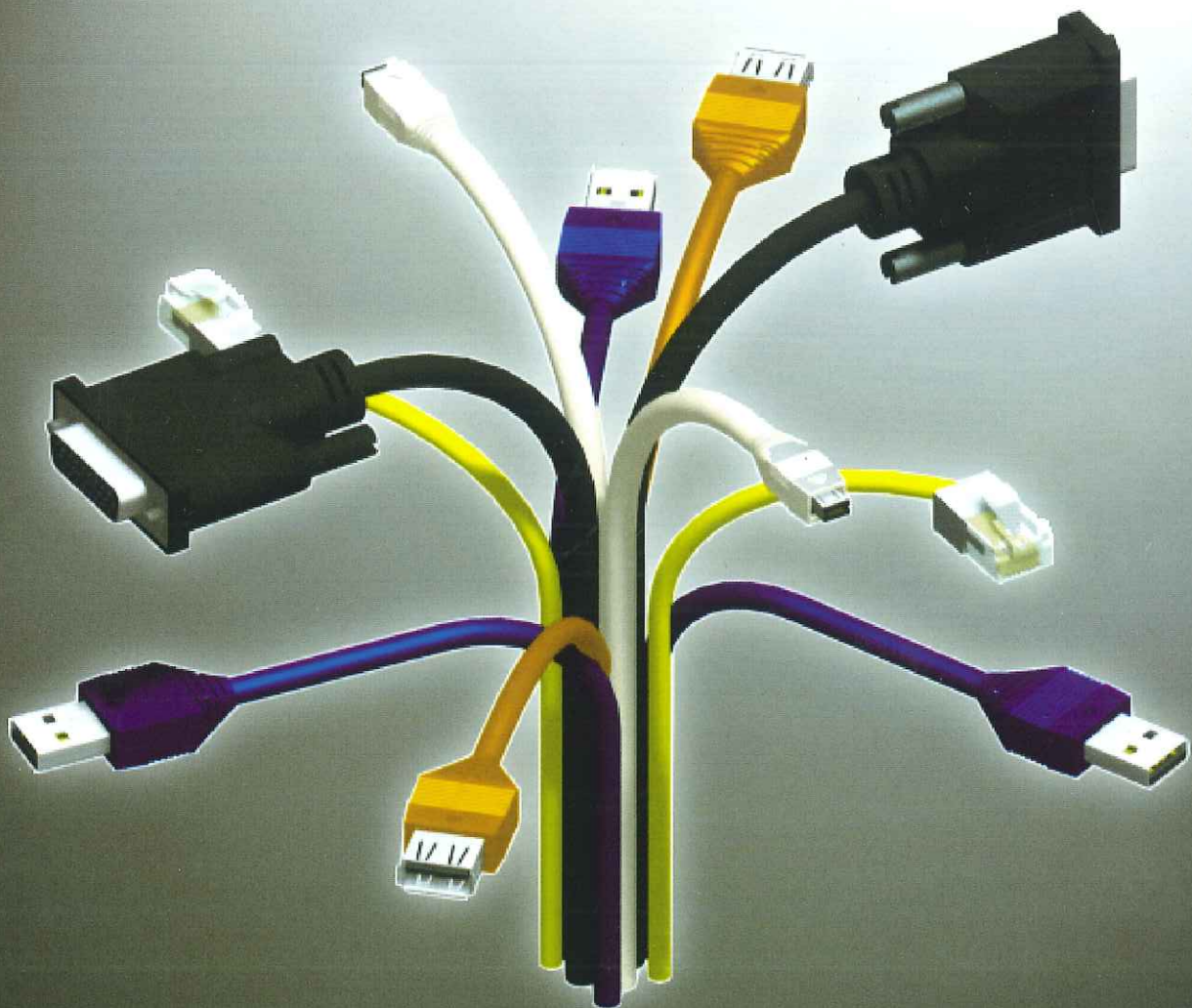




CONNECTORS MANUFACTURE

Cable



CABLE MANUFACTURER



High Definition Multimedia Interface



Series:HDMI FLAT CABLE

Exterior:PVC MOLDING
Spec:24/26/28/30 AWG
Color:BLACK
Cable Approval:UL
Connector Approval:HDMI



Series:HDMI-DVI

Exterior:PVC MOLDING
Spec:24/26/28/30 AWG
Color:WHITE
Cable Approval:UL
Connector Approval:HDMI



Series:HDMI CABLE

Exterior:ALUMINUM SHELL
Spec:28/30 AWG
Color:GOLD
Cable Approval:UL
Connector Approval:HDMI



Series:HDMI-MALE-HDMI FEMALE X2

Exterior:PVC MOLDING
Spec:28/30 AWG 1.3a
Color:BLACK
Cable Approval:UL
Connector Approval:HDMI



Series:HDMI-MINI HDMI

Exterior:PVC MOLDING
Spec:28/30 AWG 1.3a
Color:BLACK
Cable Approval:UL
Connector Approval:HDMI



Series:HDMI-SCART

Exterior:PVC MOLDING+2 FILTER
Spec:28 AWG
Color:BLACK
Cable Approval:UL
Connector Approval:HDMI



Series:HDMI-VGA-RCA

Exterior:PVC MOLDING+2 FILTER
Spec:28/30 AWG
Color:BLACK
Cable Approval:UL
Connector Approval:HDMI

Digital Visual Interface



Series:DVI-DVI MALE/MALE

Exterior:PVC MOLDING+2 FILTER
Spec:28/30 AWG
Color:BEIGE/OPTIONS
Cable Approval:UL
Connector Approval:UL



Series:DVI-VGA

Exterior:PVC MOLDING+2 FILTER
Spec:28/30 AWG
Color:BLACK/OPTIONS
Cable Approval:UL
Connector Approval:UL



Series:DVI-DVI 90 MALE/MALE

Exterior:PVC MOLDING+2 FILTER
Spec:28/30 AWG
Color:BLACK/OPTIONS
Cable Approval:UL
Connector Approval:UL



Series:DVI-DVI-VGA-RCA X3

Exterior:PVC MOLDING
Spec:28/30 AWG
Color:BLACK/OPTIONS
Cable Approval:UL
Connector Approval:UL

Adapter Series



Series:USB A/MALE-MINI USB/FEMALE

Exterior:PVC MOLDING
Spec:USB/A-MIN USB
Color:OPTIONS
Connector Approval:UL



Series:USB A/M-USB B/F,USB A/F-USB B/F,USB A/M-USB B/M,USB A/F-USB A/F

Exterior:PVC MOLDING
Spec:USB /A-USB/B
Color:OPTIONS
Connector Approval:UL



Series:USB A/MALE-MINI USB /FEMALE,USB A/MALE-MINI USB/MALE

Exterior:PVC MOLDING
Spec:USB-A/MALE-MINI USB
Color:OPTIONS
Connector Approval:UL



Series:DVI/F-HPCN/F,DVI/F-DB15/F DVI/F-DVI/M

Exterior:PVC MOLDING
Spec:DVI-HDB 15 OR DVI-DVI
Color:OPTIONS
Connector Approval:UL



Series:HDMI/M-HDMI/M, HDMI/M-HDMI/F, HDMI/F-MINI HDMI

Exterior:PVC MOLDING
Spec:HDMI-HDMI
Color:OPTIONS
Connector Approval:UL

Cable Series

Pb ROHS

CONNECTORS MANUFACTURE



Series:V.35/F-DB25/M,V.35/M-DB36/F, V.35/M-V.35/F

Exterior:PVC MOLDING
Spec:V.35-DB25
Color:OPTIONS
Connector Approval:UL



Series:DB25/M-HDB15/F,DB25/F-HDB/M,DB25/F-DB25/M

Exterior:PVC MOLDING
Spec:DB25-DB9
Color:OPTIONS
Connector Approval:UL



Series:DB9/M/F-MINI DIN M/F

Exterior:PVC MOLDING
Spec:DB25-DB9
Color:OPTIONS
Connector Approval:UL

Serial ATA Series



Series:SATA 7PIN-SATA PIN

Exterior:PVC MOLDING
Spec:26 AWG
Color:RED
Cable Approval:UL
Connector Approval:UL



Series:SATA 7PIN/M-SATA 7PIN/F

Exterior:PVC MOLDING
Spec:26 AWG
Color:RED
Cable Approval:UL
Connector Approval:UL



Series:ESATA L TYPE

Exterior:PVC MOLDING
Spec:26 AWG
Color:OPTIONS
Cable Approval:UL
Connector Approval:UL



Series:SATA 22PIN-SATA 7PIN-4PIN POWER

Exterior:PVC MOLDING
Spec:26/18 AWG
Color:RED
Cable Approval:UL
Connector Approval:UL



Series:SAS 32PIN-7PIN X4

Exterior:PVC MOLDING
Spec:26 AWG
Color:RED
Cable Approval:UL
Connector Approval:UL

Flat Cable Series



Series:IDC 133 CABLE

Exterior:BLUE-BLACK
Spec:30 AWG
Color:OPTIONS
Cable Approval:UL
Connector Approval:UL



Series:IDC-SCSI

Exterior:ASSEMBLY
Spec:28 AWG
Color:GRAY
Cable Approval:UL
Connector Approval:UL



Series:2.5"-3.5" CABLE

Exterior:ASSEMBLY
Spec:28 AWG
Color:GRAY
Cable Approval:UL
Connector Approval:UL



Series:IDC-HOUSING

Exterior:ASSEMBLY
Spec:28 AWG
Color:MULTI COLORED
Cable Approval:UL
Connector Approval:UL



Series:ATA 133 CABLE

Exterior:BLUE-GRAY-BLACK
ASSEMBLY
Spec:30 AWG
Color:BLUE/OPTIONS
Cable Approval:UL
Connector Approval:UL



Series:IDC FLAT CABLE

Exterior:IDC-DB9PIN+METAL
BRACKET
Spec:28 AWG
Color:GRAY
Cable Approval:UL
Connector Approval:UL

Universal Serial Bus Series



Series:USB A/M-USB A/M,USB A/M-USB B/M,USB-A/M-USB-A/F

Exterior:PVC MOLDING
Spec:24/28 AWG OR 28/28 AWG
Color:OPTIONS
Cable Approval:UL
Connector Approval:UL



Series:USB-A-M-USB-B-M 90

Exterior:PVC MOLDING
Spec:24/28 AWG OR 28/28 AWG
Color:OPTIONS
Cable Approval:UL
Connector Approval:UL

CABLE MANUFACTURER



Series:USB-A-M-MICRO USB
 Exterior:PVC MOLDING
 Spec:24/28 AWG OR 28/28 AWG
 Color:OPTIONS
 Cable Approval:UL
 Connector Approval:UL



Series:USB-A-F X2-USB-A-F X2
 Exterior:PVC MOLDING
 Spec:24/28 AWG OR 28/28 AWG
 Color:OPTIONS
 Cable Approval:UL
 Connector Approval:UL



Series:USB-A-F+METAL BRACKET
 Exterior:PVC MOLDING
 Spec:24/28 AWG OR 28/28 AWG
 Color:OPTIONS
 Cable Approval:UL
 Connector Approval:UL



Series:USB-A-F X4+METAL BRACKET
 Exterior:PVC MOLDING
 Spec:24/28 AWG OR 28/28 AWG
 Color:OPTIONS
 Cable Approval:UL
 Connector Approval:UL

IEEE 1394 Series



Series:IEEE1394-6PIN M/F
 Exterior:PVC MOLDING
 Spec:22/30 AWG OR 22/28 AWG
 Color:OPTIONS
 Cable Approval:UL
 Connector Approval:UL



Series:IEEE1394-6PIN M/F
 Exterior:PVC MOLDING
 Spec:22/30 AWG OR 22/28 AWG
 Color:OPTIONS
 Cable Approval:UL
 Connector Approval:UL



Series:IEEE1394-6PIN/4PIN
 Exterior:PVC MOLDING
 Spec:22/30 AWG OR 22/28 AWG
 Color:OPTIONS
 Cable Approval:UL
 Connector Approval:UL

NetWork LAN Series



Series:8P8C-8P8C (CAT5 CAT5E CAT6)
 Exterior:PVC MOLDING
 Spec:24/26 AWG
 Color:OPTIONS
 Cable Approval:UL
 Connector Approval:UL



Series:8P8C-8P8C(CAT5 CAT5E CAT6)
 Exterior:ASSEMBLY BOOT
 Spec:24/26 AWG
 Color:OPTIONS
 Cable Approval:UL
 Connector Approval:UL



Series:8P8C-8P8C(SHIELD) (CAT5 CAT5E CAT6)
 Exterior:PVC BOOT
 Spec:24/26 AWG
 Color:OPTIONS
 Cable Approval:UL
 Connector Approval:UL



Series:8P8C-8P8C(SHIELD) (CAT5 CAT5E CAT6)
 Exterior:PVC MOLDING
 Spec:24/26 AWG
 Color:OPTIONS
 Cable Approval:UL
 Connector Approval:UL



Series:8P8C-8P8C FEMALE
 Exterior:PVC MOLDING
 Spec:24/26 AWG
 Color:OPTIONS
 Cable Approval:UL
 Connector Approval:UL



Series:8P8C-8P8C
 Exterior:PVC MOLDING
 Spec:26 AWG
 Color:OPTIONS
 Cable Approval:UL
 Connector Approval:UL



Series:8P8C-8P8C CABLE
 Exterior:ASSEMBLY BOOT
 Spec:24/26 AWG
 Color:OPTIONS
 Cable Approval:UL
 Connector Approval:UL



Series:10P10C-USB-A-MALE
 Exterior:PVC MOLDING
 Spec:26 AWG
 Color:OPTIONS
 Cable Approval:UL
 Connector Approval:UL

SCSI Cable Series



Series:HPCN20P-HPCN20P
 HPCN36P-HPCN36P
 HPCN50P-HPCN50P
 HPCN68P-HPCN68P
 Exterior:PVC MOLDING
 Spec:28/30 AWG
 Color:OPTIONS
 Cable Approval:UL
 Connector Approval:UL



Series:HDB50P-VHDCI50P
 HDB68P-VHDCI68P
 Exterior:PVC MOLDING
 Spec:28/30 AWG
 Color:OPTIONS
 Cable Approval:UL
 Connector Approval:UL



Series:VHDCI68P-VHDCI50P
 Exterior:PVC MOLDING+FILTER
 Spec:30 AWG
 Color:OPTIONS
 Cable Approval:UL
 Connector Approval:UL



Series:HDB50P-HPDB50P
 Exterior:PVC MOLDING
 Spec:26 AWG
 Color:OPTIONS
 Cable Approval:UL
 Connector Approval:UL



Series:HPCN26P-HPCN26P
HPCN36P-HPCN36P
HPCN50P-HPCN50P
HPCN68P-HPCN68P
 Exterior:PVC MOLDING+2FILTER
 Spec:28/30 AWG
 Color:OPTIONS
 Cable Approval:UL
 Connector Approval:UL

Computer Cable Series



Series:HDB15PIN-HDB15PIN
 Exterior:PVC MOLDING+FILTER
 Spec:28/30 AWG
 Color:OPTIONS
 Cable Approval:UL OR NO UL
 Connector Approval:UL



Series:DB25PIN/HDB15PIN/DB9PIN
 Exterior:PVC MOLDING
 Spec:28/30 AWG
 Color:OPTIONS
 Cable Approval:UL OR NO UL
 Connector Approval:UL



Series:HDB15PIN/DB9PIN-DB25PIN
 Exterior:ASSEMBLY
 Spec:28/30 AWG
 Color:OPTIONS
 Cable Approval:UL OR NO UL
 Connector Approval:UL



Series:DB25PIN-DB25PIN
 Exterior:PVC MOLDING
 Spec:28/30 AWG
 Color:OPTIONS
 Cable Approval:UL OR NO UL
 Connector Approval:UL



Series:DB25PIN/DB37PIN-DB25PIN/DB37PIN
 Exterior:PVC MOLDING
 Spec:28/30 AWG
 Color:OPTIONS
 Cable Approval:UL OR NO UL
 Connector Approval:UL



Series:CN36/50PIN-DB25/37PIN
 Exterior:PVC MOLDING
 Spec:28/30 AWG
 Color:OPTIONS
 Cable Approval:UL OR NO UL
 Connector Approval:UL



Series:MINI DIN 3PIN-MINI DIN 8PIN
 Exterior:PVC MOLDING
 Spec:28/30 AWG
 Color:OPTIONS
 Cable Approval:UL OR NO UL
 Connector Approval:UL



Series:MINI DIN 3PIN-MINI DIN 8PIN
 Exterior:PVC MOLDING
 Spec:28/30 AWG
 Color:OPTIONS
 Cable Approval:UL OR NO UL
 Connector Approval:UL



Series:MINI DIN 3PIN-MINI DIN 8PIN
 Exterior:PVC MOLDING
 Spec:28/30 AWG
 Color:OPTIONS
 Cable Approval:UL OR NO UL
 Connector Approval:UL



Series:MINI DIN 3PIN-MINI DIN 8PIN
 Exterior:PVC MOLDING
 Spec:28/30 AWG
 Color:OPTIONS
 Cable Approval:UL OR NO UL
 Connector Approval:UL

VGA Cable Series



Series:HDB15M/F-HDB15M/F
 Exterior:PVC MOLDING
 Spec:28/30 AWG
 Color:OPTIONS
 Cable Approval:UL
 Connector Approval:UL



Series:HDB15M/F-HDB15M/F
 Exterior:PVC MOLDING
 Spec:28/30 AWG
 Color:OPTIONS
 Cable Approval:UL
 Connector Approval:UL





CABLE MANUFACTURER

Cable Series

Series:HDB15M/F-HDB15M/F

Exterior:PVC MOLDING+FILTER
Spec:28/30 AWG
Color:OPTIONS
Cable Approval:UL
Connector Approval:UL



Series:HDB15M/F-HDB15M/F

Exterior:PVC MOLDING
Spec:28/30 AWG
Color:OPTIONS
Cable Approval:UL
Connector Approval:UL



Series:HDB15M/F-HDB15M/F

Exterior:PVC MOLDING+FILTER
Spec:28/30 AWG
Color:OPTIONS
Cable Approval:UL
Connector Approval:UL



Series:HDB15M/F-HDB15M/F

Exterior:PVC MOLDING+2FILTER
Spec:28/30 AWG
Color:OPTIONS
Cable Approval:UL
Connector Approval:UL



Series:BNC-SMA

Exterior:PVC MOLDING
Spec:RG 58A/U
Color:BLACK
Cable Approval:UL
Connector Approval:UL



Series:SMB PLUG SMB-PLUG

Exterior:PVC MOLDING
Spec:26 AWG(RG 174)
Color:BLACK
Cable Approval:UL
Connector Approval:UL



Series:SMB PLUG SMB-PLUG

Exterior:PVC MOLDING
Spec:RG 58/U
Color:BLACK
Cable Approval:UL
Connector Approval:UL



Series:BNC FEMALE-MCX MALE

Exterior:PVC MOLDING
Spec:RG 179B/U
Color:BLACK
Cable Approval:UL
Connector Approval:UL



KVM Series

Series:VGA+PS II

Exterior:PVC MOLDING+FILTER
Spec:28/30 AWG
Color:OPTIONS
Cable Approval:UL
Connector Approval:UL



Series:VGA+PS II +SPK+MIC

Exterior:PVC MOLDING
Spec:28/30 AWG
Color:OPTIONS
Cable Approval:UL
Connector Approval:UL



Series:VGA+PS II MIC HOUSING

Exterior:PVC MOLDING
Spec:28/30 AWG
Color:OPTIONS
Cable Approval:UL
Connector Approval:UL



RF Series

Series:F SERIES PLUG-JACK

Exterior:PVC MOLDING
Spec:RG 6/U
Color:BLACK
Cable Approval:UL
Connector Approval:UL



Wire Harness Series

Series:PITCH3.96mm WIRE HARNESS

Exterior:ASSEMBLY
Spec:18 AWG
Color:OPTIONS
Cable Approval:UL
Connector Approval:UL



Series:PITCH2.54mm WIRE HARNESS

Exterior:ASSEMBLY
Spec:26 AWG
Color:GREEN-YELLOW
Cable Approval:UL
Connector Approval:UL



Series:PITCH20/1.25mm WIRE HARNESS

Exterior:ASSEMBLY
Spec:28/30 AWG
Color:OPTIONS
Cable Approval:UL
Connector Approval:UL



Series:PITCH2.54/2.00mm WIRE HARNESS

Exterior:ASSEMBLY
Spec:28/30 AWG
Color:OPTIONS
Cable Approval:UL
Connector Approval:UL



RoHS

Audio/Video Cable Series



Series:STEREO 3.5/2.5-STEREO
3.5/2.5

Exterior:PVC MOLDING
Spec:28/30 AWG
Color:OPTIONS
Cable Approval:UL OR NO UL
Connector Approval:UL



Series:STEREO/MONO PLUG-STEREO
/MONO PLUG

Exterior:PVC MOLDING
Spec:28/30 AWG
Color:OPTIONS
Cable Approval:UL OR NO UL
Connector Approval:UL



Series:STEREO-SENSOR

Exterior:PVC MOLDING
Spec:28/30 AWG
Color:OPTIONS
Cable Approval:UL OR NO UL
Connector Approval:UL



Series:HDB15P/DB9P-STEREO

Exterior:PVC MOLDING
Spec:28/30 AWG
Color:OPTIONS
Cable Approval:UL OR NO UL
Connector Approval:UL



Series:STEREO-STEREO FEMALE X2

Exterior:PVC MOLDING
Spec:28/30 AWG
Color:OPTIONS
Cable Approval:UL OR NO UL
Connector Approval:UL



Series:STEREO X2-STEREO X2

Exterior:PVC MOLDING
Spec:28/30 AWG
Color:OPTIONS
Cable Approval:UL OR NO UL
Connector Approval:UL



Series:DC PLUG-DC PLUG

Exterior:PVC MOLDING
Spec:28/30 AWG
Color:OPTIONS
Cable Approval:UL OR NO UL
Connector Approval:UL



Series:STEREO-RCA X3

Exterior:PVC MOLDING
Spec:28/30 AWG
Color:OPTIONS
Cable Approval:UL OR NO UL
Connector Approval:UL

Consumer Cable Series



Series:USB2.0 Repeater Cable

Exterior:PVC MOLDING
Spec:It's not passtive extension cable.It's an active device.
The USB signals going in and out of the extension cable are buffered to assure signal quality and the meeting of the USB is using passive cables for the purpose of extension will result in signal errors and is not recommended.
Color:Beige(Options)



Series:USB2.0 Easy Transfer Cable

Exterior:PVC MOLDING
Spec:Upgrade to a new computer is not easier.The Easy transfer cable offers a quick way to transfer your files and settings from your old computer to a new one.Just install the software provided on the enclosed CD onto your XP computer.
Color:Black(Options)



Series:USB Link Cable

Exterior:PVC MOLDING
Spec:Supports peer tp peer file t ransfer function PC-PC,Mac-Mac and PC-Mac USB interface. Up to 5Mbps data transfer rate single cable solution for data communication. Bus powered from either USB port.Support remote wake up.File synchronization.
Color:Black(Options)



Series:USB to Serial Adapter

Exterior:PVC MOLDING
Spec:Over 500kpbs data trasfer rate. It's power from the USB Connection-Nopower adapter required. Work with cellular phone, PDA, Digital Cameras and Modems.No IRQS, No IRQ conflicts.
Color:Black(Options)

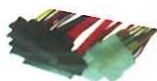
SAS Cable Series



Internal 4i MultiLane
90 SFF-8484



Internal 4i MultiLane
SFF-8484



4 x 2Port 29P driver
Conn. with power Conn.



Internal 4i MultiLane
SFF-8484



4 x 7Pin and 10Pin side
band connector



SFF-8088 26-CKT
External Universal Key

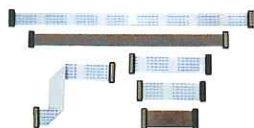


Target base SFF-8087 36-
CKT Internal (with out
side band)



4 x 7Pin SATA

FFC Cable Series



DF9 FFC Cable, AL. Foil,
Copper Foil



LVDS FFC Cable
Double Fold Design



FFC Cable With
Housing/Terminal



RF Cable

Automotive Cable Series



Automotive Cable



Automotive Cable

Displayport Cable Series



The displayport is designed for internal and external system solution for high bandwidth audio and video data transfer.

TECHNICAL SPECIFICATIONS:

- 10.2 Gbit/s forward link channel supports high resolution monitors, 2560x1600, with single cable.
- 8B/10B data transmission.
- Full bandwidth transmission for 3 meter cable.
- 128-bit AES displayport content protection (DPDP) support, and support for 40-bit high-bandwidth digital content protection (HDCP) from version 1.1 onwards.

Displayport Cable Series



Series: HDMI Extender

Exterior: Zinc Alloy Gold Plated Pearl Silver Color

Spec: Boosts your HDMI signal up to 150 feet. Extends your cable reach for: PC'S, DVD'S, Projectors, HDTV'S, HD Optical Media Players. Compatible with VGA, SVGA, XGA, SXGA, UXGA. Backward Compatible With DVI-D interface.

Color: Pearl White and Black

Customization

Available

CONNECTORS MANUFACTURE

糧德精密有限公司

Amtek Technology Co., Ltd.

TEL : 886-2260-6878

FAX : 886-2260-7079

E-mail: service@amtek-co.com.tw

Http://www.amtek-co.com.tw

Add: No.3, Ln. 33, Rixin St., Tucheng Dist.,
New Taipei City 23666, Taiwan

新北市土城區日新街33巷3號



2014