

Best-in-Class, End-to-End Connectivity Solutions for Fixed and Mobile Applications

AirLink® Antennas

Accelerate your deployment with always-on, end-to-end connectivity provided by our portfolio of high performance AirLink® antennas. Tested and certified to provide optimal performance with all AirLink routers and gateways, Sierra Wireless offers an extensive portfolio of AirLink antennas—designed to connect a wide range of mobile and fixed applications in public safety, utilities, industrial and distributed enterprises.

WHY AIRLINK ANTENNAS?

- Carefully matched to operate with AirLink Routers and Gateways
- Tested and certified to enable high performance connectivity
- Vastly simplified product sourcing and ordering process
- Serviced and supported by Sierra Wireless, with 3 year warranty

SharkFin

The SharkFin antennas have a compact OEM style housing that contain up to six high performance antenna elements for a variety of antenna solutions—2x2 MiMo antenna elements function for 2G, 3G, and 4G LTE frequencies, and an active antenna for GNSS with 26dB gain LNA and dual band 3x3 MiMo Wi-Fi (2.4/5GHz).

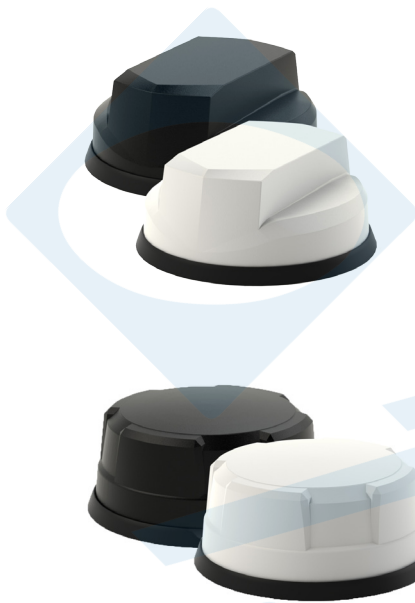


VARIANT	Supported Technologies	Part Number	Recommended AirLink Routers/Gateway
6-in-1 Sharkfin	2 x LTE 698-3800 MHz (MiMo) + GNSS + 3 x Wi-Fi 2.4/5GHz (MiMo)	6001197 (Black) 6001262 (White)	MG90, MP70
4-in-1 Sharkfin	2 x LTE 698-3800MHz (MiMo) + GNSS + 1 x Wi-Fi 2.4/5GHz	6001198	LX60, RV55
3-in-1 Sharkfin	2 x LTE 698-3800MHz (MiMo) + GNSS	6001119	MP70, RV55, RV50X
3-in-1 Sharkfin WiFi	3 x 3 MiMo Wi-Fi 2.4/5GHz	6001199	MG90, MP70
2-in-1 Sharkfin	2 x LTE 698-3800MHz (MiMo)	6001120	MG90 (Second Radio), LX60
Mag Mount	Magnetic mounting without drilling a hole; Available for trial and demos	6001112	All

Dome

The Dome Antennas are high performance, rugged, ground plane independent MiMo antennas. They have low profile design that contains up to ten isolated high performance antenna elements in a single housing for optimal coverage—four ultra-wideband elements spanning 617-6000MHz support MiMo/diversity at LTE/5G frequencies; a high performance GNSS antenna with an integrated 26dB gain LNA, and up to five dualband 2.4/5GHz Wi-Fi elements that provide reliable MiMo Wi-Fi connectivity.

The Dome antennas are ideal for heavy-duty public safety, transit and industrial installations, with a simple single bolt mounting.



VARIANT	Supported Technologies	Part Number	Recommended AirLink Routers/Gateway
10-in-1 Dome	4 x 5G/LTE 617-6000MHz (MiMo) + GNSS + 5 x Wi-Fi 2.4/5GHz (MiMo)	6001354 (White) 6001355 (Black)	XR80
9-in-1 Dome	4 x 5G/LTE 617-6000MHz (MiMo) + GNSS + 4 x Wi-Fi 2.4/5GHz (MiMo)	6001399 (Black) 6001400 (White)	XR90
8-in-1 Dome	4 x LTE 617-6000MHz (MiMo) + GNSS + 3 x Wi-Fi 2.4/5GHz (MiMo)	6001345 (White) 6001344 (Black)	MG90 5G 4x4
6-in-1 Dome	2 x LTE 617-6000MHz (MiMo) + GNSS + 3 x Wi-Fi 2.4/5GHz (MiMo)	6001363 (White) 6001364 (Black)	MG90, MP70
5-in-1 Dome	2 x LTE 617-6000MHz (MiMo) + GNSS + (1+1)Wi-Fi 2.4/5GHz	6001275 (Black)	RV55 Dual WiFi
Mag Mount	Magnetic mounting without drilling a hole; Available for trial and demos	6001113	All

Wi-Fi

With up to four omni-directional dual band Wi-Fi elements in a single housing, the Wi-Fi antennas are IP69K certified built for internal/external Wi-Fi applications. Each element is isolated from the other with a separate feed and covers both the 2.4GHz and 5GHz bands. The 3-In-1 and 4-in-1 Wi-Fi is easy to install and is supplied with 4m low loss cables.

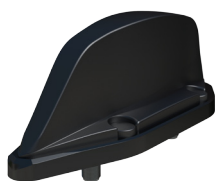


VARIANT	Supported Technologies	Part Number	Recommended AirLink Routers/Gateway
4-in-1 Wi-Fi	4 x Wi-Fi 2.4/5GHz (MiMo)	6001351 (Black) 6001352 (White)	XR90
3-in-1 Wi-Fi	3 x Wi-Fi 2.4/5GHz (MiMo)	6001283 (Black) 6001284 (White)	MG90, MP70

3-in-1 Rail

Incorporating a DC grounded element operating wideband across all frequencies from 698 to 6000MHz, 3in1 Rail antenna is a high performance antenna housed in a high impact, weatherproof flame-retardant Ultem.

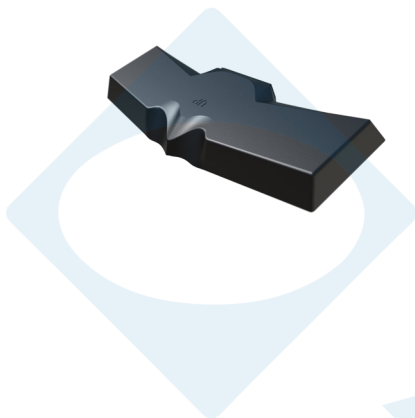
EN50155 approved, this antenna is specially designed for use on trains, trams and buses.



VARIANT	Supported Technologies	Part Number	Recommended AirLink Routers/Gateway
3-in-1 Rail	2 x LTE 698-6000MHz (MiMo) + GNSS	6001202	MG90, MP70, RV55

BAT

Efficient element design that assures high performance and robust communication link, BAT antenna is purposely designed for high-speed telematics applications that can be mounted on any non conductive surface. The isolated dual 4G/3G/5G antenna elements cover 617-6000MHz and GNSS with the option for dual-band Wi-Fi.



	Supported Technologies	Part Number	Recommended AirLink Routers/Gateway
VARIANT			
4-in-1	2 x LTE 617-6000MHz (MiMo) + GNSS + 1 x Wi-Fi 2.4/5GHz	6001201	RV55, LX60, LX40
3-in-1	2 x LTE 617-6000MHz (MiMo) + GNSS	6001200	MP70, RV55, RV50X

Panel

The Panel antenna comes in a compact, robust low profile housing that contains up to four antenna elements covering all current global cellular and LTE bands in frequency range 698-3800MHz and active GNSS antenna. With a single bolt mount and versatile bracket, it provides ideal solution for a variety of fixed mounted applications.



	Supported Technologies	Part Number	Recommended AirLink Routers/Gateway
VARIANT			
4-in-1 Panel	2 x LTE 698-3800MHz (MiMo) + GNSS + 1 x Wi-Fi 2.4/5GHz	6001285 (2m)	RV55 WiFi, LX60 WiFi, LX40 WiFi
3-in-1 Panel	2 x LTE 698-3800MHz (MiMo) + GNSS	6001125 (3m) 6001211 (1m)	MP70, RV55, RV50X, LX60
2-in-1 Panel	2 x LTE 698-3800MHz (MiMo)	6001124 (3m) 6001219 (1m)	RV55, LX60, LX40, RV50X
Panel LPWA	LTE 698-3800MHz	6001231 (2m)	RV55, LX60, LX40
Bracket (Wall/Pole/Mast Mount) ¹		6001152	All

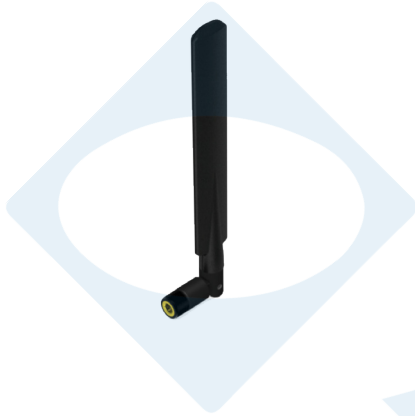
¹ Not compatible with 6001231

High Gain Directional

With 6dBi of peak gain at 698-960MHz and 9dBi peak gain at 1710-3800MHz, directional antenna provides extra gain for fringe coverage areas. The rugged, weather resistant housing is designed for wall/mast mounting.



	Supported Technologies	Part Number	Recommended AirLink Routers/Gateway
VARIANT			
High Gain Directional	2 x LTE 698-3800MHz (MiMo)	6001126	MP70, RV55, RV50X, LX60



Paddle

Paddle antennas are ground plane independent antennas designed with an articulated connector for flexible positioning of 0–90° pivot and a sleek ruggedized profile for durability.

VARIANT	Supported Technologies	Part Number	Recommended AirLink Routers/Gateway
Paddle 5G	LTE 615-6000MHz	6001343	MG90 5G
Paddle Cell	LTE 698-3800MHz	6001110	MG90, MP70, LX60, LX40, RV55, RV50X
Paddle Wi-Fi/Bluetooth	Wi-Fi 2.4/5GHz, Bluetooth	6001111 (SMA) 6001359 (FAKRA)	MG90, MP70, RV55, LX60, LX40
Paddle LPWA (2m cable)	LTE 698-2700MHz	6001401	XR80, XR90

Reference Table

	Cable Length (m)	Part Number	XR	MG	MP	RV	LX
MOBILE ANTENNA							
10-in-1 Dome	5	6001354 (B) 6001355 (W)	•				
9-in-1 Dome	5	6001399 (B) 6001400 (W)	•				
8-in-1 Dome	5	6001344 (B) 6001345 (W)		•			
6-in-1 SharkFin	4	6001197 (B) 6001262 (W)		•	•		
6-in-1 Dome	5	6001363 (W) 6001364 (B)		•	•		
5-in-1 Dome	5	6001275				•	
4-in-1 SharkFin	4	6001198					•
4-in-1 Wi-Fi	4	6001351 (B) 6001352 (W)	•				
3-in-1 SharkFin	4	6001119		•	•	•	
3-in-1 Rail	6	6001202		•	•		
3-in-1 SharkFin Wi-Fi	4	6001199		•	•		
3-in-1 Wi-Fi	4	6001283 (B) 6001284 (W)		•	•		
2-in-1 SharkFin	4	6001120		•	•	•	•
4-in-1 BAT	3	6001201					•
3-in-1 BAT	3	6001200			•		
FIXED ANTENNA							
4-in-1 Panel	2	6001285				•	•
3-in-1 Panel	3	6001125			•	•	
	1	6001211					
2-in-1 Panel	3	6001124				•	•
	1	6001219					
Panel LPWA	2	6001231				•	•
High Gain Directional	5	6001126				•	•
Paddle Wi-Fi		6001111 (S) 6001359 (F)		•	•	•	•
Paddle 5G		6001343		•			
Paddle Cellular		6001110		•	•	•	•

About Sierra Wireless

Sierra Wireless (NASDAQ: SWIR) (TSX: SW) is the leading IoT solutions provider that combines devices, network services and software to unlock value in the connected economy. Companies globally are adopting IoT to improve operational efficiency, create better customer experiences, improve their business models and create new revenue streams. Whether it is an integrated solution to help a business securely connect edge devices to the cloud, or a software/API service to help manage processes associated with billions of connected assets, or a platform to extract real-time data to make the best business decisions, Sierra Wireless will work with you to develop the right industry-specific solution for your next IoT endeavor. Sierra Wireless has more than 1,300 employees globally and operates R&D centers in North America, Europe and Asia.

For more information, visit www.sierrawireless.com.

Sierra Wireless, the Sierra Wireless logo, AirPrime, and the red wave design are trademarks of Sierra Wireless. Other registered trademarks that appear on this brochure are the property of the respective owners. © 2020 Sierra Wireless, Inc. 2021.06.30