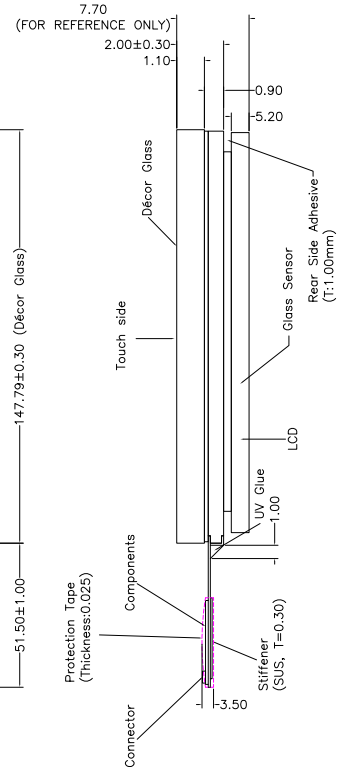
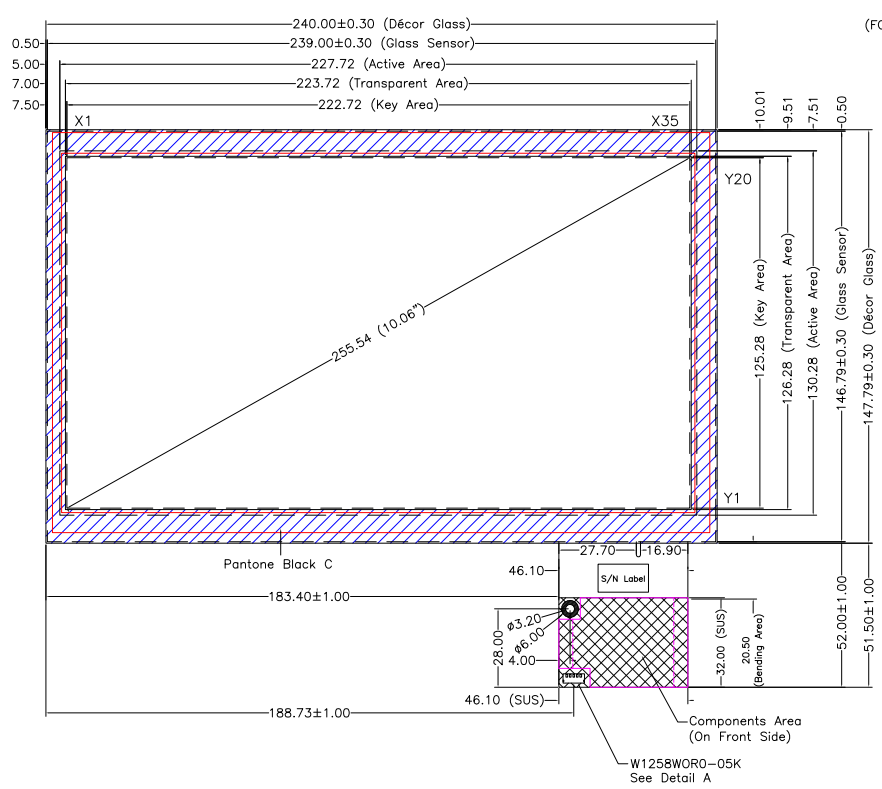
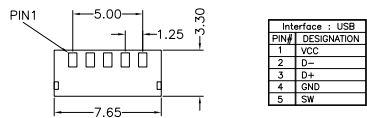
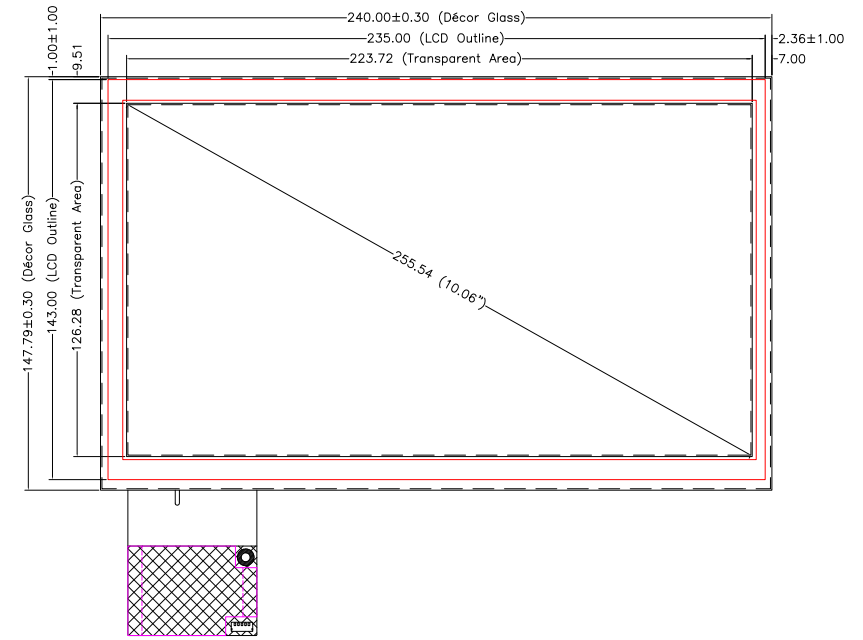


Touch Side View

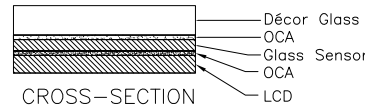
Touch Side View



Rear Side View



DETAIL A



- NOTES:
- OVERALL THICKNESS : 7.70mm (FOR REFERENCE ONLY)
  - LCD : 26-D1101-007
  - TOUCH PANEL : 9G-P1016-PB0-001
  - PROCESS : DRY BONDING



NO.	DATE	DESCRIPTION	CHK	TOLERANCES UNLESS SPECIFIED		DWG NO : AD-96-P1016-PB0-001-01
REVISION				.X	± 0.50	
CHIEF OF DESIGN		APPROVED	Bruce	.XX	± 0.50	
DRAWN BY	Arthur	DATE	2019.10.01	.XXX	± 0.30	
SHEET 1 OF 1				ANGULAR	.	