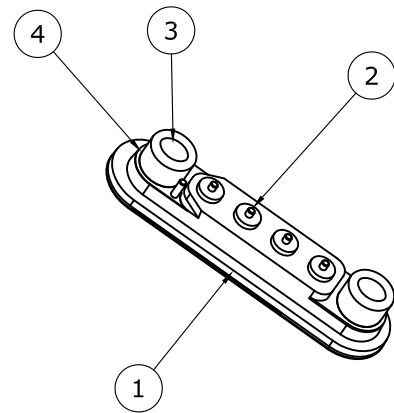
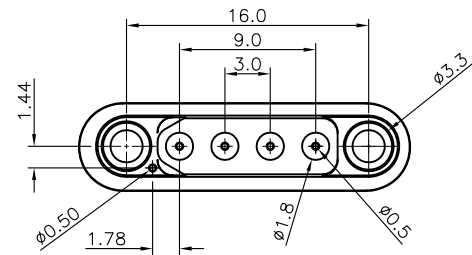
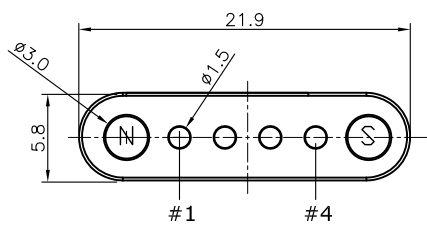
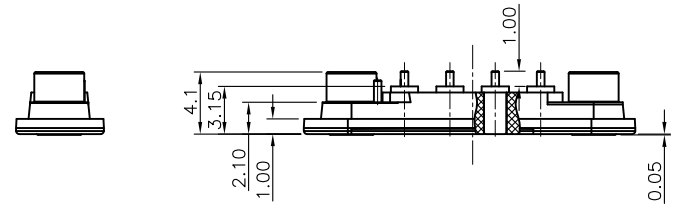


REV.	DESCRIPTION	DRAWN	DATE
1	INITIAL RELEASE	FROS	2021/12/06




**SPECIFICATION:**

1. ELECTRICAL
  - 1.1 Current Rating: 1A per pin
  - 1.2 Voltage Rating: 12VDC
  - 1.3 Contact Resistance: 30mΩ
  - 1.4 Insulation Resistance: 500MΩ
  - 1.5 Dielectric Withstanding Voltage: 500VAC
2. MECHANICAL
  - 2.1 Durability: 20,000 Cycle
  - 2.2 Pin Strength: 9.8N min.
3. ENVIRONMENTAL
  - 3.1 Operating temperature range: -30°C~+60°C



4	GLUE	LTE-120HP
3	MAGNET	N48 NdFeB, Ni-Cu-Ni plating
2	MACHINE PIN	Brass, 20u" gold plating
1	HOUSING	HTN, UL94V-0, Black
NO.	PART NAME	DESCRIPTION

UNLESS OTHERWISE SPECIFIED TOLERANCE					
UNIT:	DECIMAL	LINEAR	ANGLES		
mm	X.	±0.50	±5°	www.attend.com.tw	
	X.X	±0.25	±3°		
	X.XX	±0.12	±1°		
DRAWN	Fros	2021/12/06	DRAWN NAME:		
CHECKED	Tim	2021/12/06	Pogo Machine Pin, Magnet Type, 4P H=4.15mm, Pitch 3.0, DIP, 20u", black		
APPROVED	Ken	2021/12/06	PRODUCT NO.	303C-C4115-30-04	
SCALE	1/1	SHEET	1/1	SIZE	A4
			FILE NAME	303C-C4115-30-04_B_1	



Singel 3 | B-2550 Kontich | Belgium | Tel. +32 (0)3 458 30 33 | info@alcom.be | www.alcom.be  
 Rivium 1e straat 52 | 2909 LE Capelle aan den IJssel | The Netherlands | Tel. +31 (0)10 288 25 00 | info@alcom.nl | www.alcom.nl

