

flexilink_{board-to-board}

Solid and Permanent Connection in Press-fit

Key Features

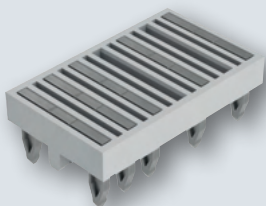
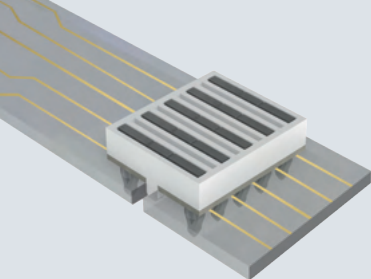
Types	Straight, permanent connection with 1 to 3 rows
Stack height	5 - 25 mm
Number of contacts	2 - 90
Pitch	2.54 mm
Termination technology	Press-fit
Approvals	UL, RoHS compliant

Applications

Machine tools, agricultural engineering, automotive, intralogistics, crane technology, propulsion technology

Characteristics

- Reliable mechanical and electrical connection
- Space & cost saving, replaces spacer
- Single-component connection
- Individual board-to-board distances possible
- 11A operational current per pin
- Press-fit zone with Tcom press[®]



flexilink_{jumper}

Reliable, Small and Easy for LED and more

Key Features

Types	Permanent
Number of contacts bridges	2 - 15
Pitch	2 mm or 4 mm
Termination technology	Press-fit
Operational current	11 A at 20°C (5 contact bridges) per pin
Approvals	UL, RoHS compliant

Applications

Horizontal PCB connection
LED
PCB chaining

Characteristics

- Small footprint design, height of only 2 mm
- Solid mechanical and electrical connection
- Cost saving through single-component connection
- Easy processing without soldering
- Individual pin configuration possible